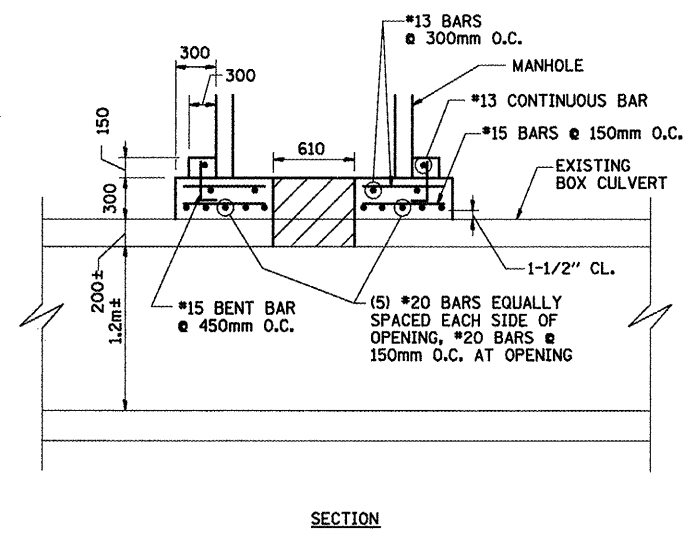
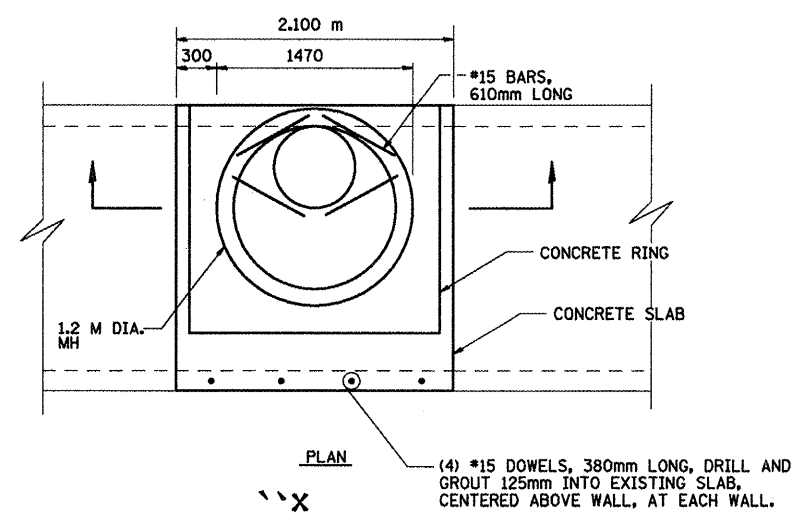
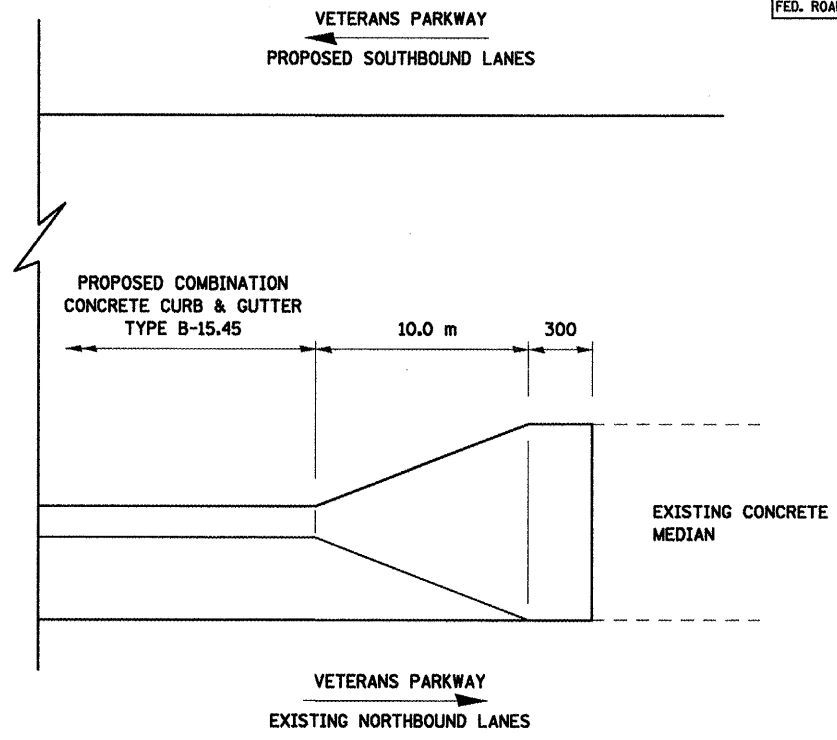


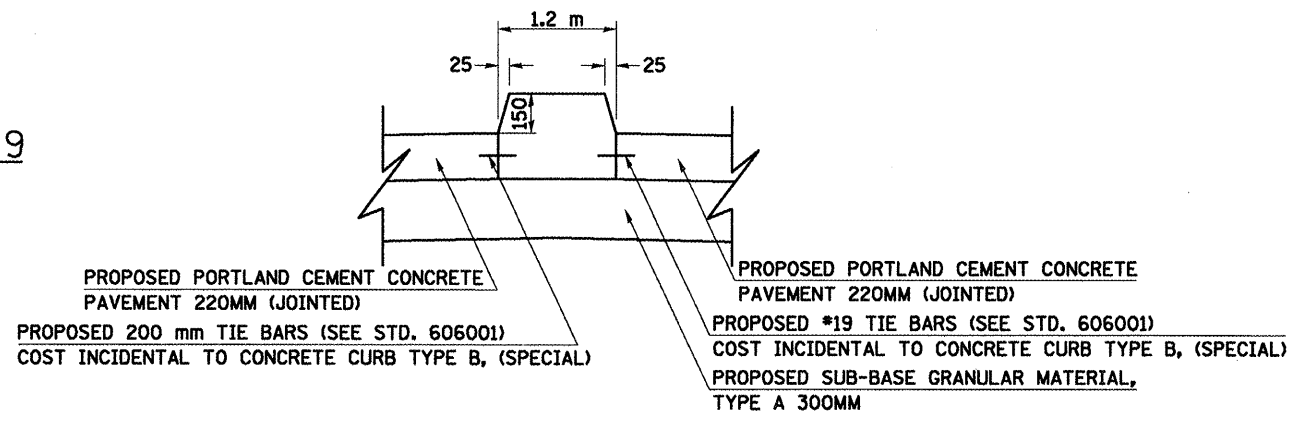
| | | | | |
|---------------------|-------------|---------------------------|--------------|-----------|
| F.A.P. RTE. | SECTION | COUNTY | TOTAL SHEETS | SHEET NO. |
| 704 | (1)N & TS-1 | McLEAN | 497 | 307 |
| STA. N/A | | TO STA. N/A | | |
| FED. ROAD DIST. NO. | | ILLINOIS FED. AID PROJECT | | |
| CONTRACT NO. 70514 | | | | |



STORM SEWER MANHOLE DETAIL ON EXISTING STRUCTURE 057-8029
NOT TO SCALE



**VETERANS PARKWAY
CURB & GUTTER TRANSITION DETAIL
STA. 3+028.900**
NOT TO SCALE
(INCLUDED IN COST OF CURB & GUTTER)



PROPOSED CONCRETE CURB, TYPE B (SPECIAL)
NOT TO SCALE
STA. 0+309.140 TO STA. 0+395.515 (MORRIS AVENUE)

| REVISIONS | | ILLINOIS DEPARTMENT OF TRANSPORTATION |
|-----------|------|---------------------------------------|
| NAME | DATE | |
| | | SPECIAL DETAILS |
| | | |
| | | |
| | | |
| | | |
| | | |

DRAWN BY SAM
CHECKED BY PMH
DATE 05-27-09