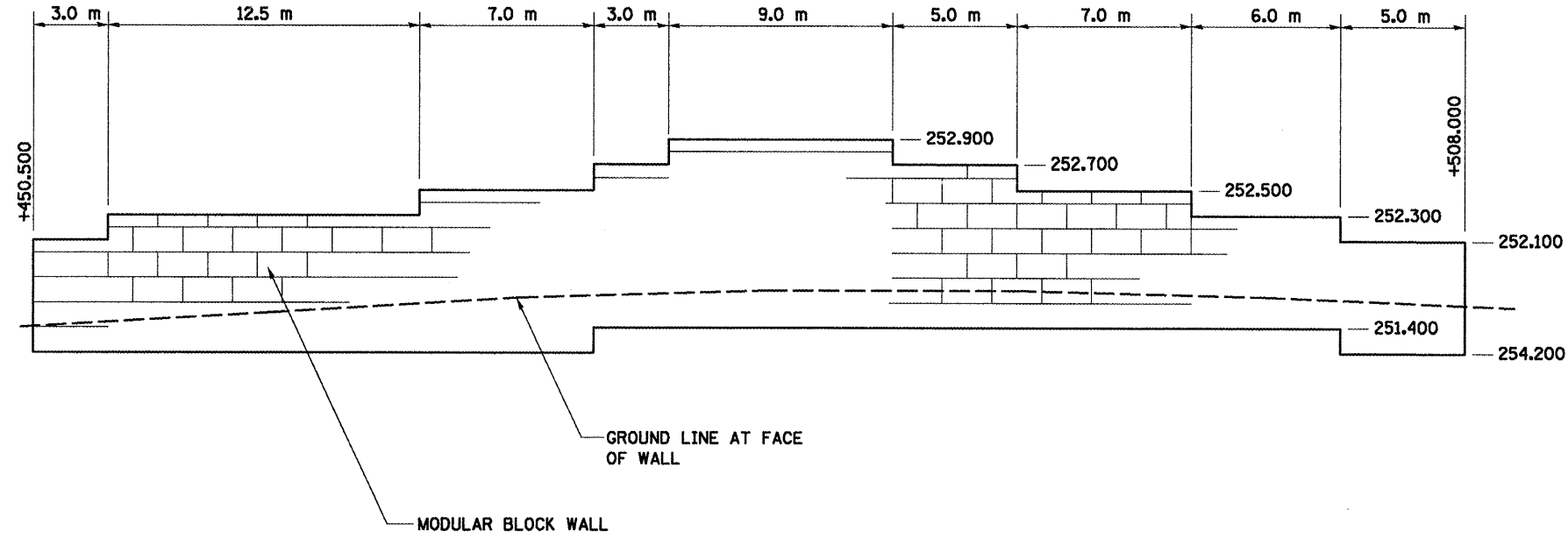


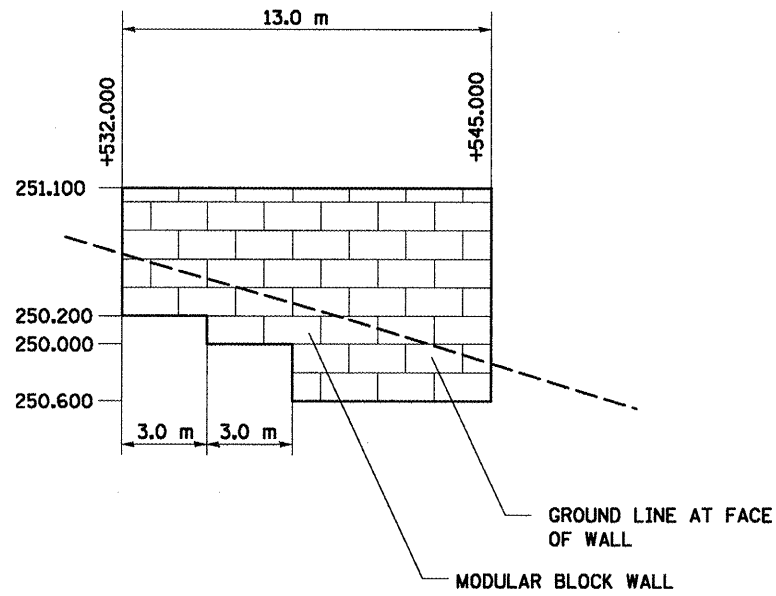
F.A.P. RTE.	SECTION	COUNTY	TOTAL SHEETS	SHEET NO.
TO4	(1)N & TS-1	McLEAN	497	310A
STA. N/A	TO STA. N/A			
FED. ROAD DIST. NO.	ILLINOIS FED. AID PROJECT			
CONTRACT NO. 70514				



MODULAR BLOCK WALL ELEVATION
NOT TO SCALE
SIX POINTS ROAD STA. 0+450.500 TO 0+508.000, LT.

NOTES:

- ELEVATIONS ARE FOR PURPOSES OF SHOWING GENERAL LAYOUT AND QUANTITY COMPUTATION. CONTRACTOR TO SUBMIT MANUFACTURER'S SHOP DRAWINGS SIGNED BY AN ILLINOIS LICENSED STRUCTURAL ENGINEER.



MODULAR BLOCK WALL ELEVATION
NOT TO SCALE
SIX POINTS ROAD STA. 0+532.000 TO 0+545.000, LT.

PLOT DATE = 8/2/2009
 PLOT SCALE = 1:3000
 USER NAME = crsgrg

REVISIONS		ILLINOIS DEPARTMENT OF TRANSPORTATION
NAME	DATE	
		SPECIAL DETAILS DRAWN BY PMH CHECKED BY PMH DATE 05-27-09

SPECIAL DETAILS