

F.A.P. RTE.	SECTION	COUNTY	TOTAL SHEETS	SHEET NO.
704	(1)N & TS-1	McLEAN	497	385
STA. 0+060.000 TO STA. 0+070.000				
FED. ROAD DIST. NO.		ILLINOIS FED. AID PROJECT		

36 34 32 30 28 26 24 22 20 18 16 14 12 10 8 6 4 2 0 2 4 6 8 10 12 14 16 18 20 22 24 26 28 30 32 34 36

FINAL SURVEY NOTE BOOK NO. _____

DATE _____

BY _____

DESIGNED BY _____

PLOTTED BY _____

TEMPLATE NO. _____

AREAS CHECKED _____

ORIGINAL SURVEY NOTE BOOK NO. _____

DATE _____

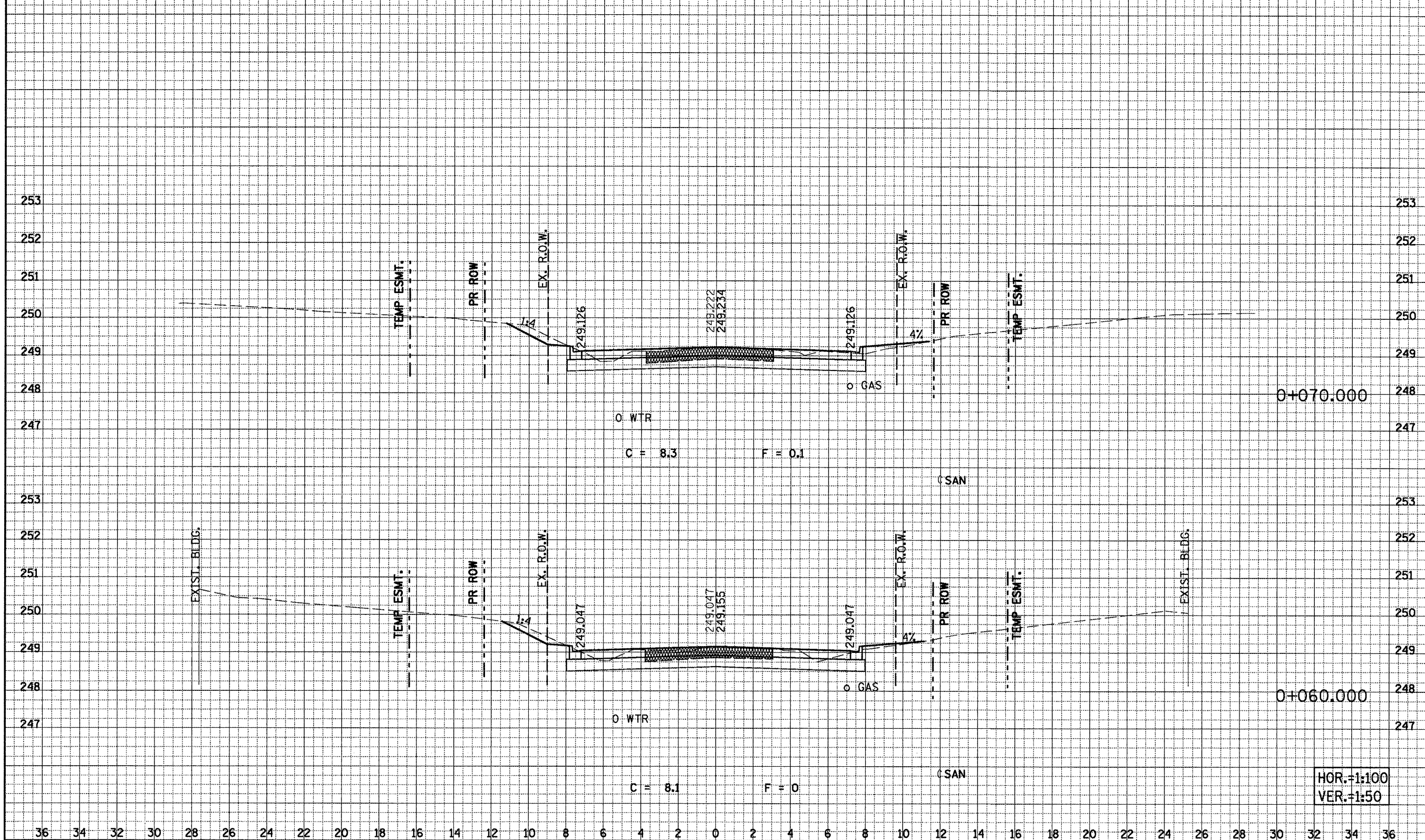
BY _____

DESIGNED BY _____

PLOTTED BY _____

TEMPLATE NO. _____

AREAS CHECKED _____



HOR.=1:100
VER.=1:50

SIX POINTS ROAD CROSS SECTIONS, STA. 0+060.000 TO STA. 0+070.000