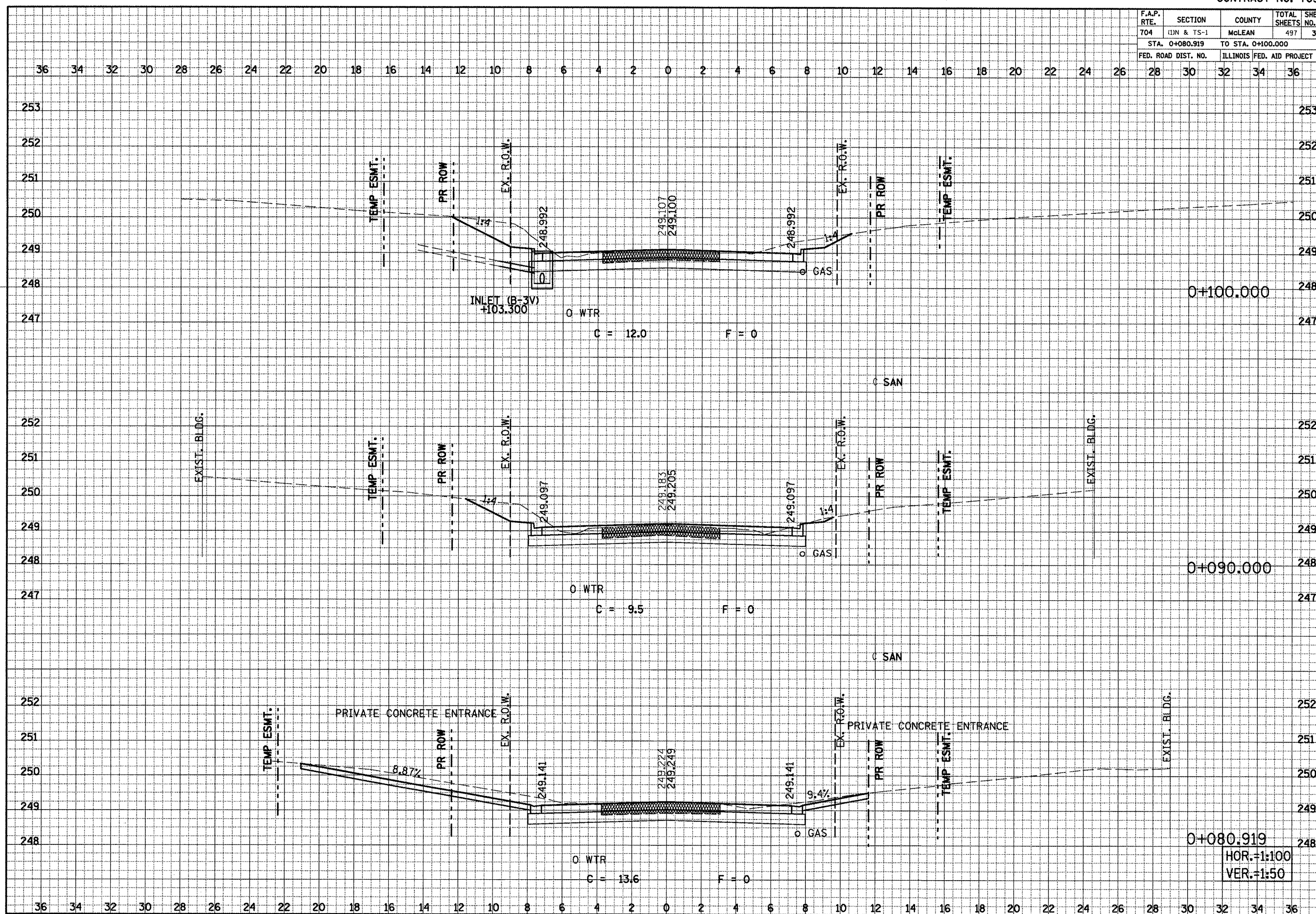


F.A.P. RTE.	SECTION	COUNTY	TOTAL SHEETS	SHEET NO.
704	(DN & TS-1	McLEAN	497	386
STA. 0+080.919 TO STA. 0+100.000				
ILLINOIS FED. AID PROJECT				



FINAL SURVEY NOTE BOOK NO. _____
 SURVEYED BY _____ DATE _____
 TEMPLATE _____
 AREAS CHECKED _____

ORIGINAL SURVEY NOTE BOOK NO. _____
 SURVEYED BY _____ DATE _____
 TEMPLATE _____
 AREAS CHECKED _____

SIX POINTS ROAD CROSS SECTIONS, STA. 0+080.919 TO STA. 0+100.000

HOR.=1:100
 VER.=1:50