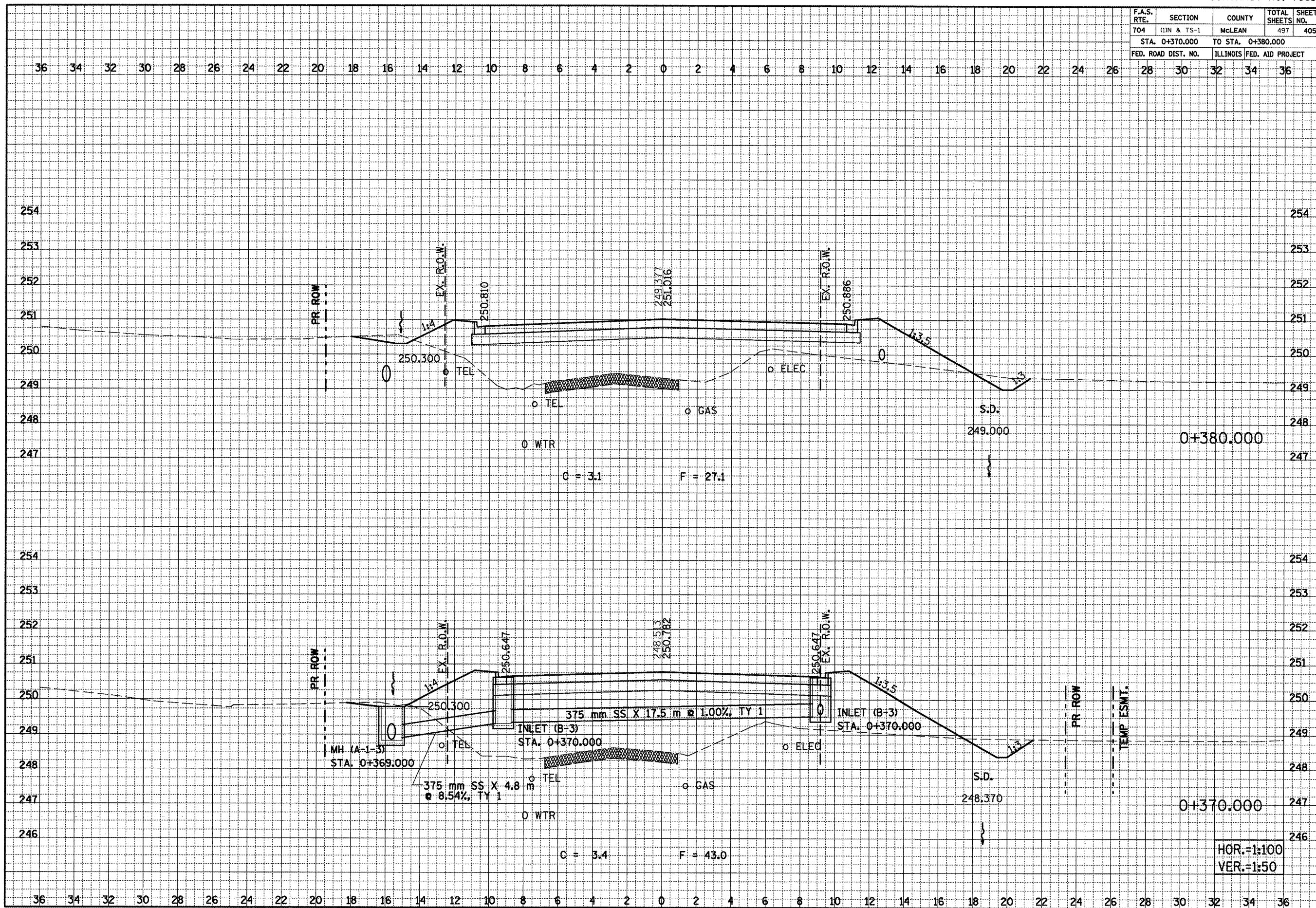


F.A.S. RTE.	SECTION	COUNTY	TOTAL SHEETS	SHEET NO.
704	(1)N & TS-1	McLEAN	497	405
STA. 0+370.000 TO STA. 0+380.000				
FED. ROAD DIST. NO.		ILLINOIS FED. AID PROJECT		



FINAL SURVEY NOTE BOOK NO. _____

DATE _____

BY _____

APPROVED _____

AREAS CHECKED _____

ORIGINAL SURVEY NOTE BOOK NO. _____

DATE _____

BY _____

APPROVED _____

AREAS CHECKED _____

SIX POINTS ROAD CROSS SECTIONS, STA. 0+370.000 TO STA. 0+380.000