

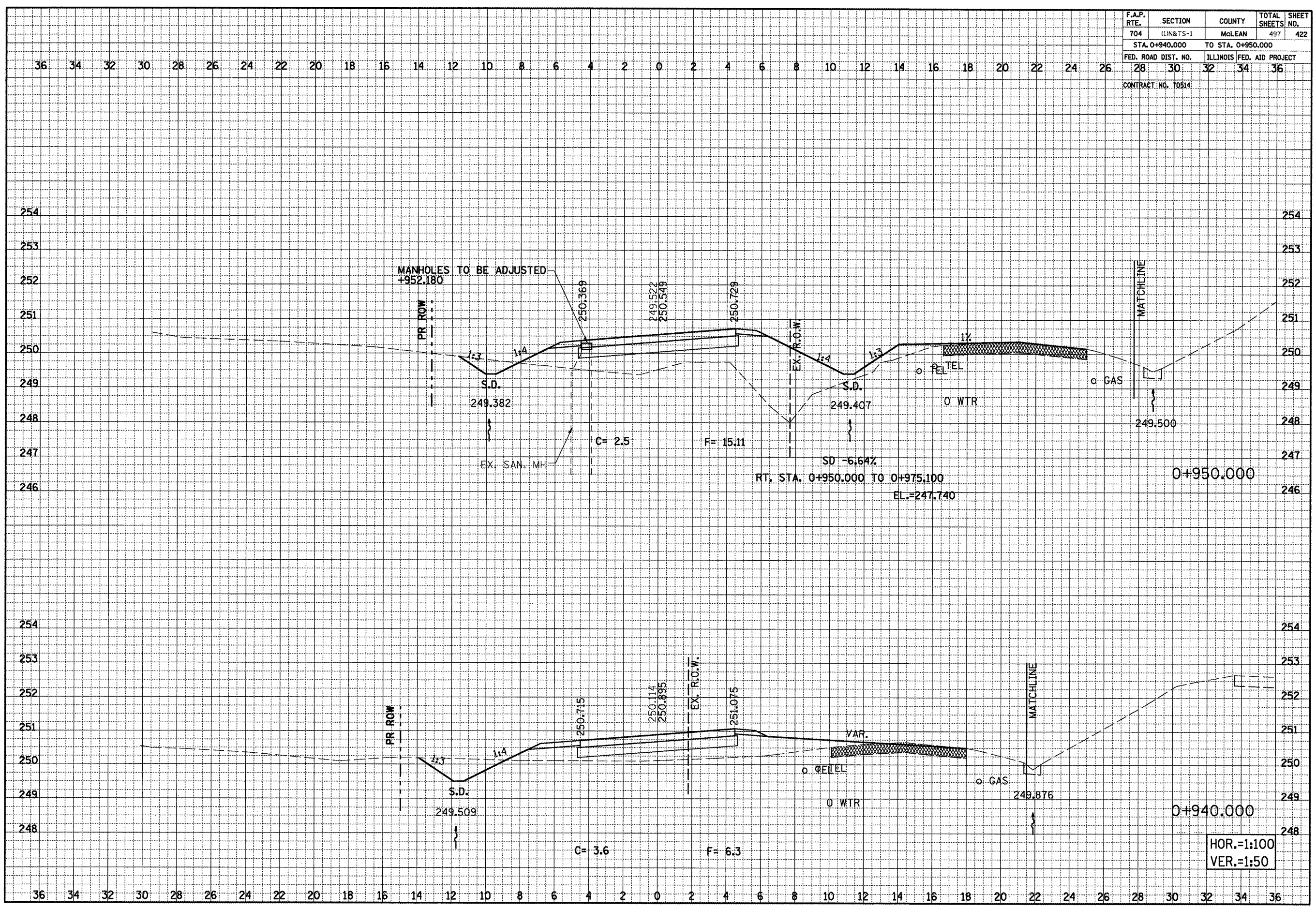
F.A.P. RTE.	SECTION	COUNTY	TOTAL SHEETS	SHEET NO.
704	(1)N&TS-1	McLEAN	497	422
STA. 0+940.000		TO STA. 0+950.000		
FED. ROAD DIST. NO.	ILLINOIS FED. AID PROJECT			
28	30	32	34	36
CONTRACT NO. T0514				

BY _____ DATE _____

FINAL SURVEY SURVEYED SURVEYED SURVEYED
 NOTE BOOK TEMPLATE AREAS CHECKED
 NO. _____

BY _____ DATE _____

ORIGINAL SURVEY SURVEYED SURVEYED SURVEYED
 NOTE BOOK TEMPLATE AREAS CHECKED
 NO. _____



SPRINGFIELD ROAD, CROSS SECTIONS, STA. 0+940.000 TO STA. 0+950.000