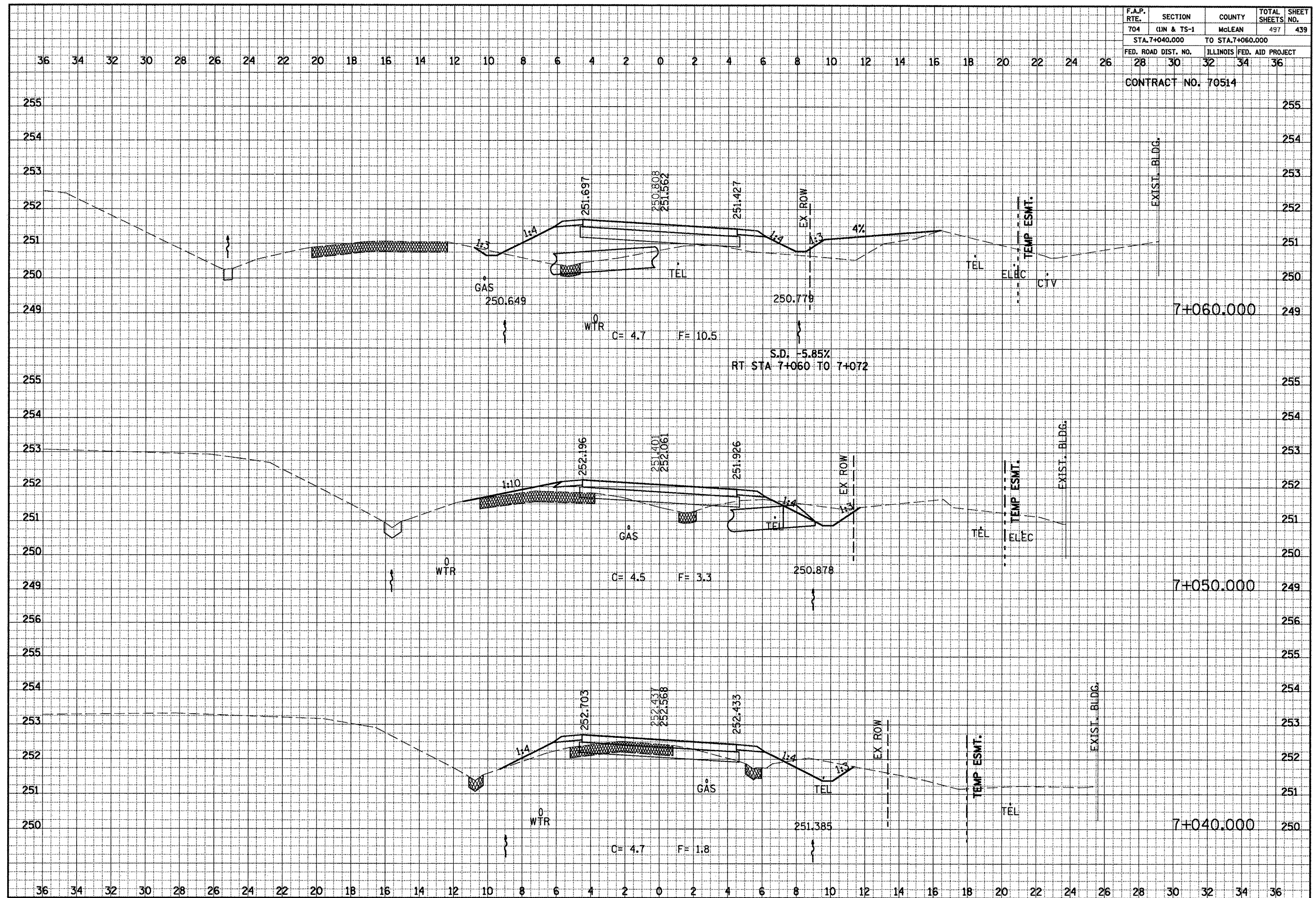


F.A.P. RTE.	SECTION	COUNTY	TOTAL SHEETS	SHEET NO.
704	(UN & TS-1	MCLEAN	497	439
STA. 7+040.000		TO STA. 7+060.000		
FED. ROAD DIST. NO.	ILLINOIS	FED. AID PROJECT		
28	30	32	34	36
CONTRACT NO. 70514				

DATE	
BY	
NO.	
FINAL SURVEY	
NOTE BOOK	
AREAS CHECKED	
TEMP. ESMT.	
EL. BLDG.	
EXIST. BLDG.	

DATE	
BY	
NO.	
ORIGINAL SURVEY	
NOTE BOOK	
AREAS CHECKED	
TEMP. ESMT.	
EL. BLDG.	
EXIST. BLDG.	



GREENWOOD AVE. CROSS SECTIONS, STA. 7+040.000 TO STA. 7+060.000