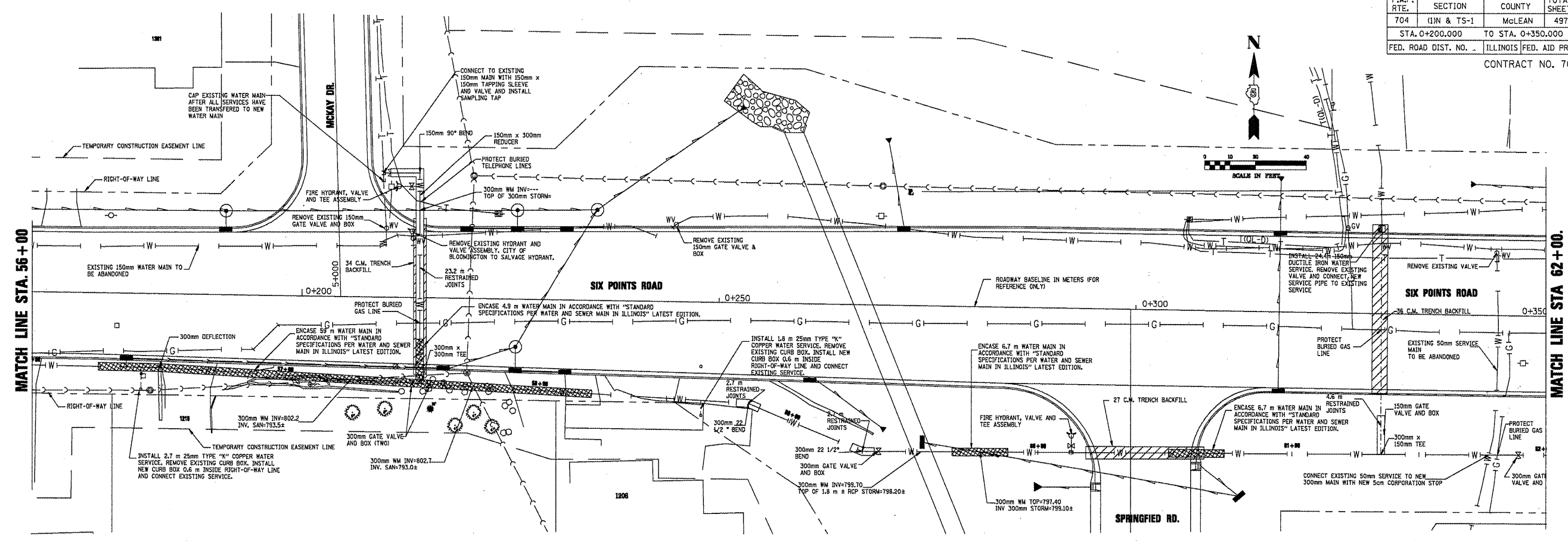
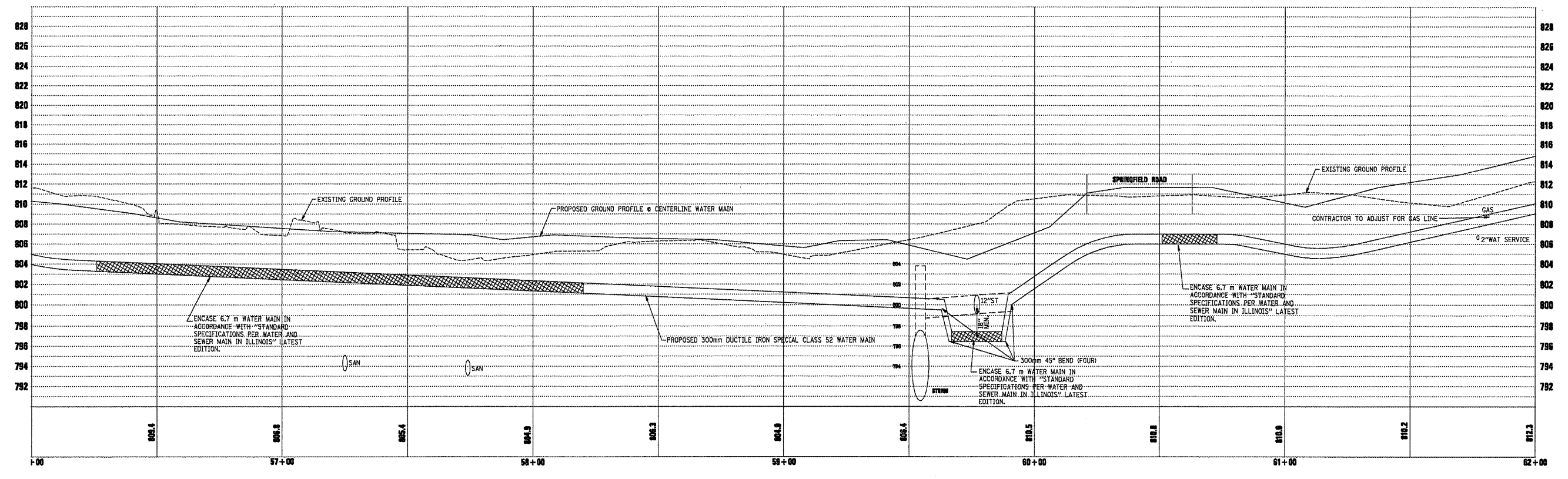


F.A.P. RTE.	SECTION	COUNTY	TOTAL SHEETS	SHEET NO.
704	(1)N & TS-1	McLEAN	497	487
STA. 0+200.000		TO STA. 0+350.000		
FED. ROAD DIST. NO. -		ILLINOIS FED. AID PROJECT		
CONTRACT NO. 70514				

BY	DATE
FINAL SURVEYED	
SURVEY PLOTTED	
NOTE BOOK TEMPLATE	
AREAS CHECKED	
NO.	



BY	DATE
ORIGINAL SURVEYED	
SURVEY PLOTTED	
NOTE BOOK TEMPLATE	
AREAS CHECKED	
NO.	



SIX POINTS ROAD, WATER MAIN, STA. 56+00 TO STA. 62+00