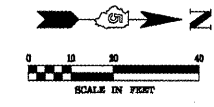
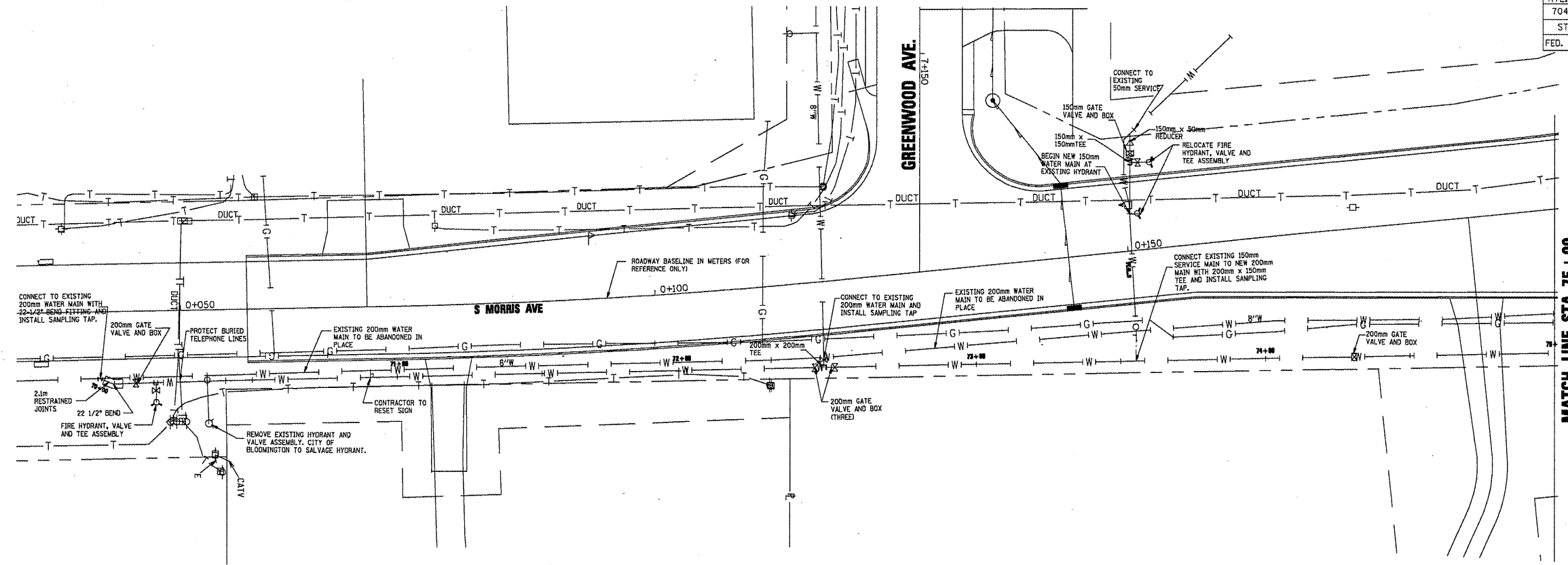


F.A.P. RTE.	SECTION	COUNTY	TOTAL SHEETS	SHEET NO.
704	(1N & TS-1)	McLEAN	497	491
STA. 0+200,000		TO STA. 0+350,000		
FED. ROAD DIST. NO. 1		ILLINOIS FED. AID PROJECT		
CONTRACT NO. 70514				

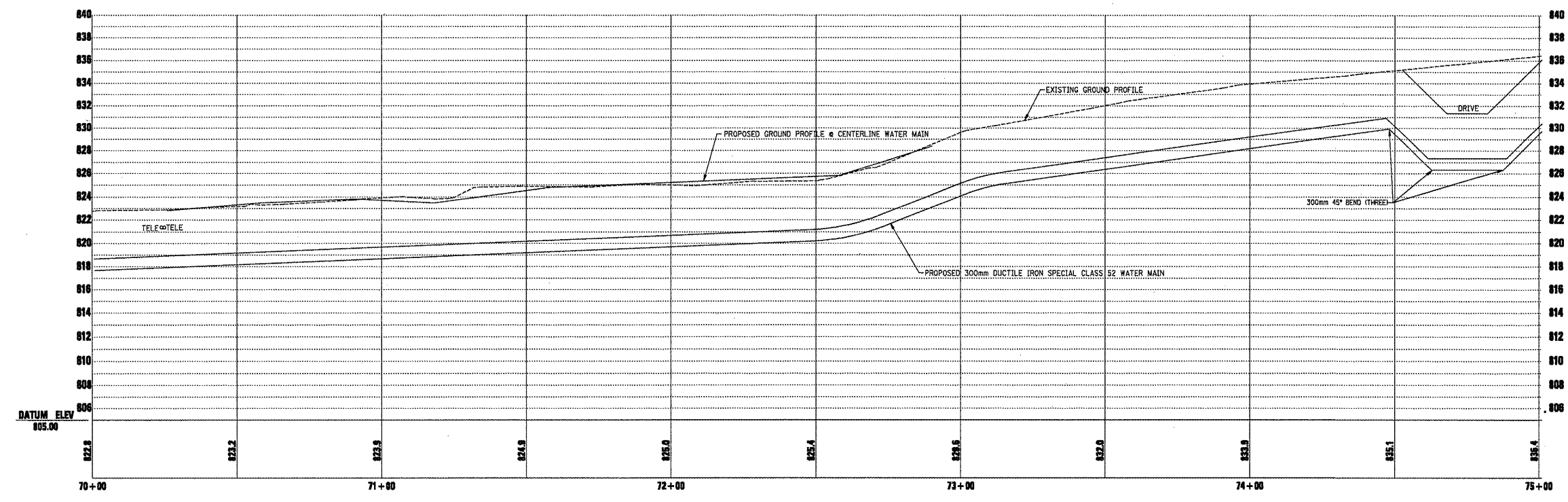


DATE	BY
FINAL SURVEY PLOTTED	
NOTE BOOK NO.	
TEMPLATE AREAS CHECKED	
NO.	



MATCH LINE STA. 75+00

DATE	BY
ORIGINAL SURVEY PLOTTED	
NOTE BOOK NO.	
TEMPLATE AREAS CHECKED	
NO.	



MORRIS AVE. WATER MAIN, STA. 70+00 TO STA. 75+00