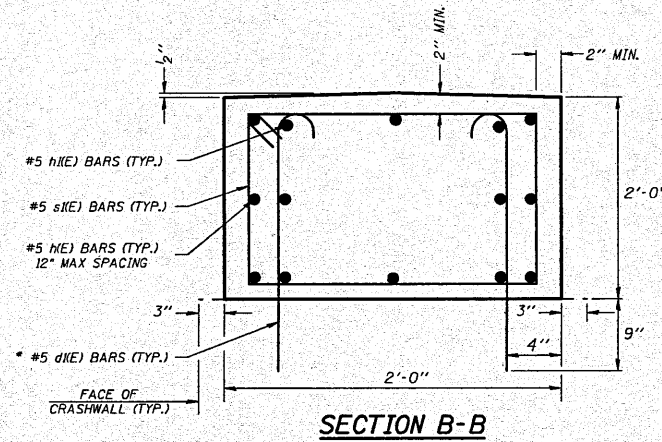
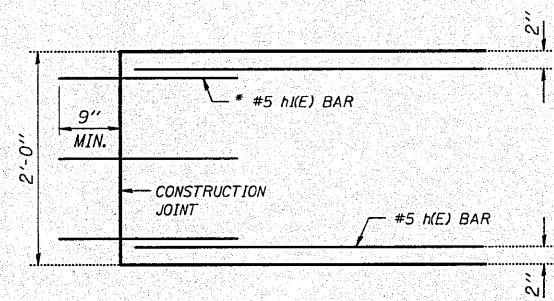
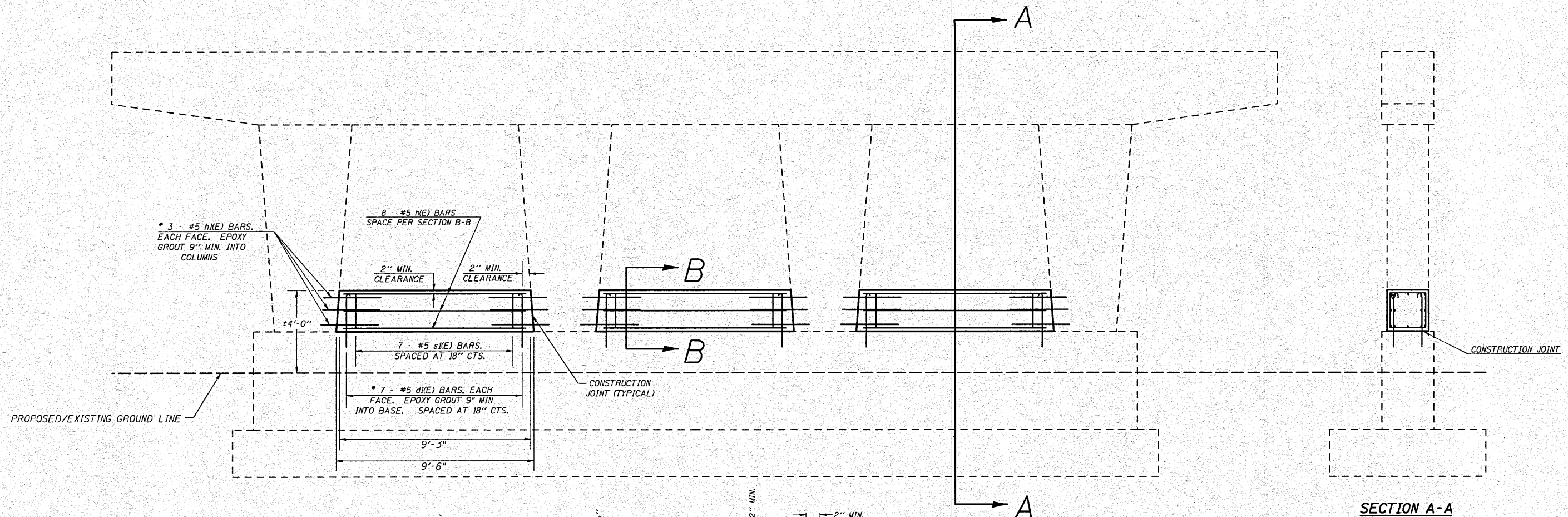


# S.N. 057-0127 SOUTH PIER (PIER #1) CRASHWALL EXTENSION



\* EPOXY GROUT BARS IN 9" MIN. HOLES ACCORDING TO ARTICLE 584 OF THE STANDARD SPECIFICATIONS.

BILL OF MATERIALS				
BAR	SHAPE	NO.	SIZE	LENGTH
d1(E)		42	#5	3'-2"
h(E)		24	#5	8'-11"
h1(E)		36	#5	2'-9"
s1(E)		21	#5	7'-7"
CONCRETE STRUCTURES		CU. YDS.	4.2	
REINFORCEMENT BARS, EPOXY COATED		LBS.	632	

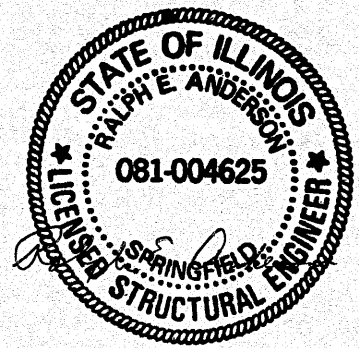
## GENERAL NOTES

PLAN DIMENSIONS AND DETAILS RELATIVE TO EXISTING PLANS ARE SUBJECT TO ROUTINE VARIATIONS. THE CONTRACTOR SHALL FIELD VERIFY EXISTING DIMENSIONS AND DETAILS AFFECTING NEW CONSTRUCTION AND MAKE NECESSARY APPROVED ADJUSTMENTS PRIOR TO CONSTRUCTION OR ORDERING OF MATERIALS. SUCH VARIATIONS SHALL NOT BE CAUSE FOR ADDITIONAL COMPENSATION FOR A CHANGE IN SCOPE OF THE WORK, HOWEVER, THE CONTRACTOR WILL BE PAID FOR THE QUANTITY ACTUALLY FURNISHED BASED UPON THE UNIT PRICE BID FOR THE WORK.

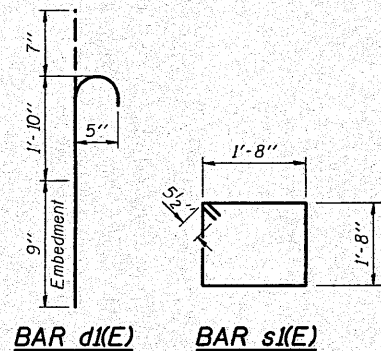
THE COST OF EPOXY GROUTING BARS SHALL BE INCLUDED WITH REINFORCEMENT BARS (EPOXY COATED).

REINFORCEMENT BARS SHALL CONFORM TO THE REQUIREMENTS OF ASTM A706 OR GR 60. SEE SPECIAL PROVISIONS.

REINFORCEMENT BARS DESIGNATED (E) SHALL BE EPOXY COATED.



Expires 11/30/2012



FILE NAME =	USER NAME = hogenbj	DESIGNED - BJH	REVISED - BJH 9/24/2010	STATE OF ILLINOIS DEPARTMENT OF TRANSPORTATION	S.N. 057-0127 SOUTH PIER (PIER #1) CRASHWALL EXTENSION	F.A.I. RTE.	SECTION	COUNTY	TOTAL SHEET NO.
cr:\pw-work\pvidot\hogenbj\d0158348\0570127-58-shd-details.dgn	DRAWN - BJH 9/2/2010	REVISED -	74			(57-2011)21.22IRS-3	McLean	150	87
PLOT SCALE = 40.0000' / IN.	CHECKED -	REVISED -	CONTRACT NO. 70550						
PLOT DATE = 10/21/2010	DATE -	REVISED -	ILLINOIS FED. AID PROJECT						
				SCALE:	SHEET NO. 1 OF 3 SHEETS	STA.	TO STA.		