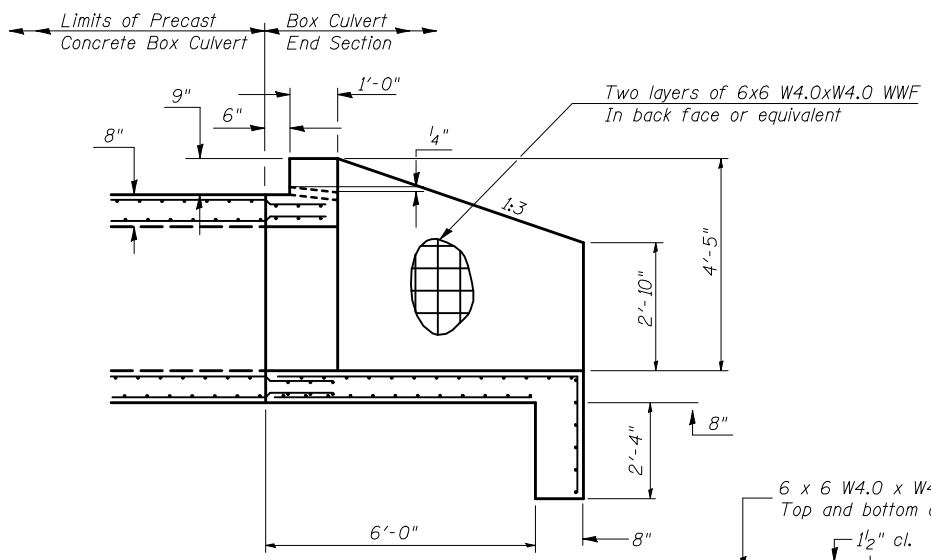
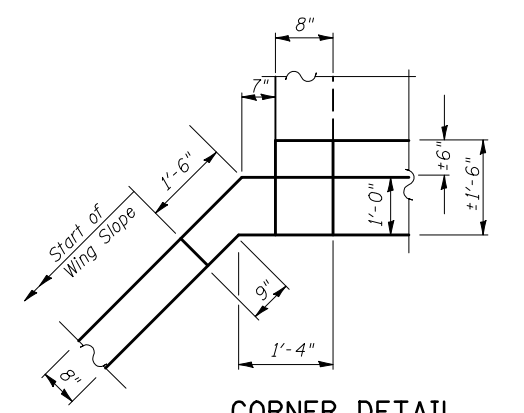


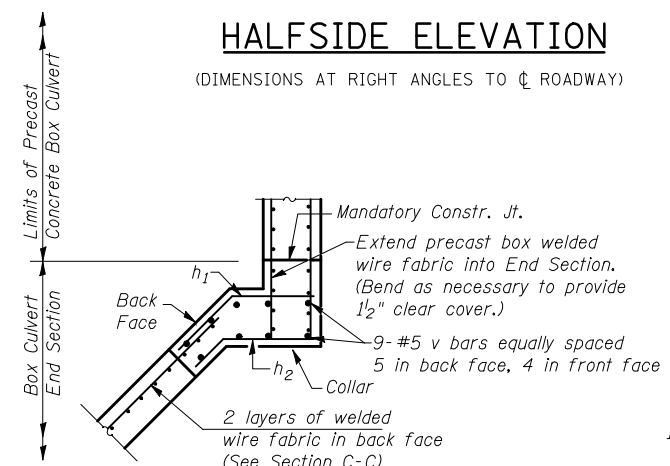
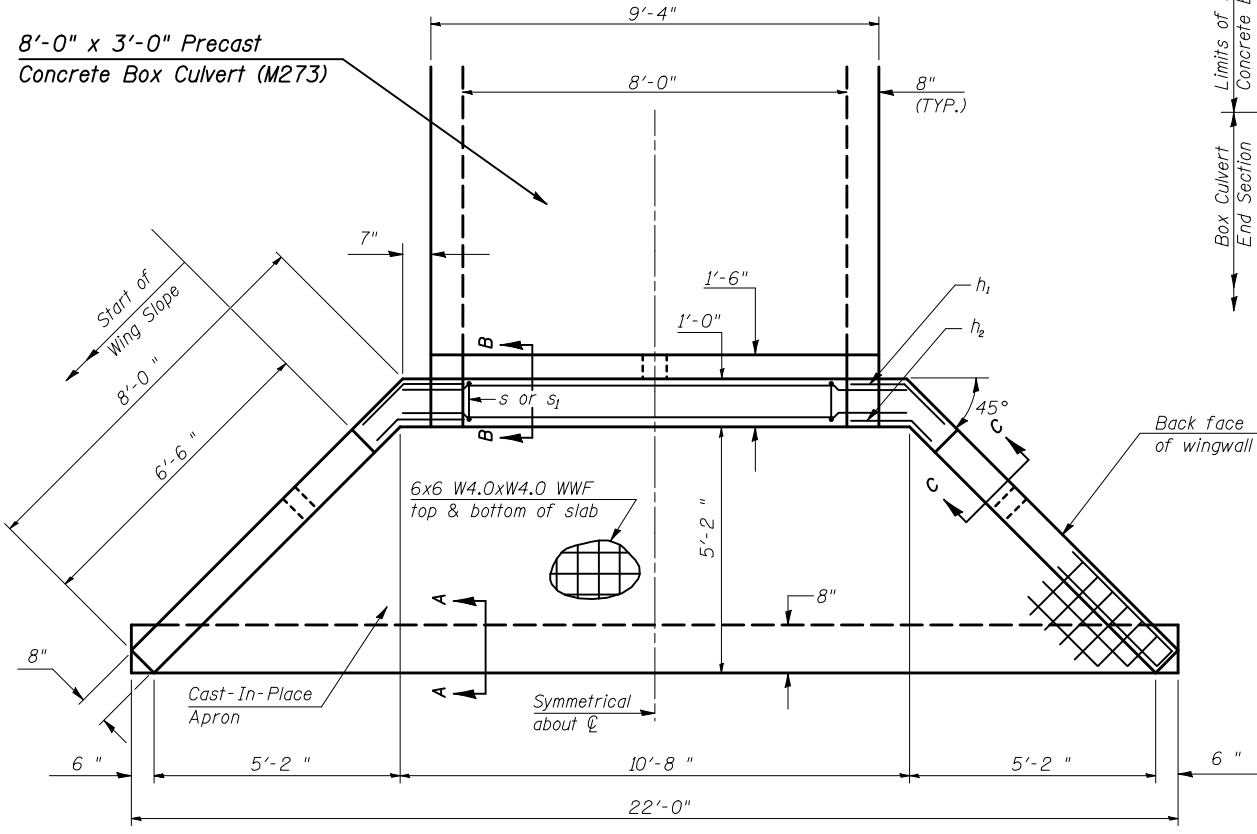
END ELEVATION



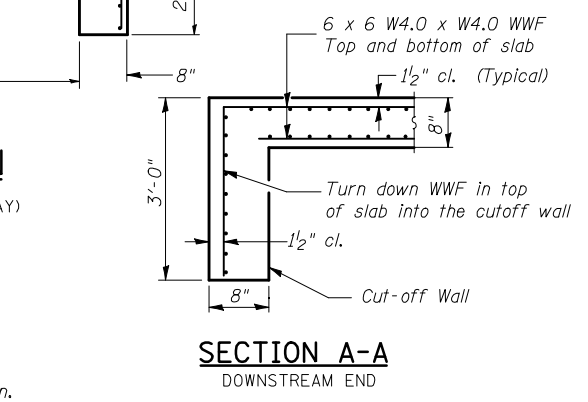
HALFSIDE ELEVATION
 (DIMENSIONS AT RIGHT ANGLES TO \bar{C} ROADWAY)



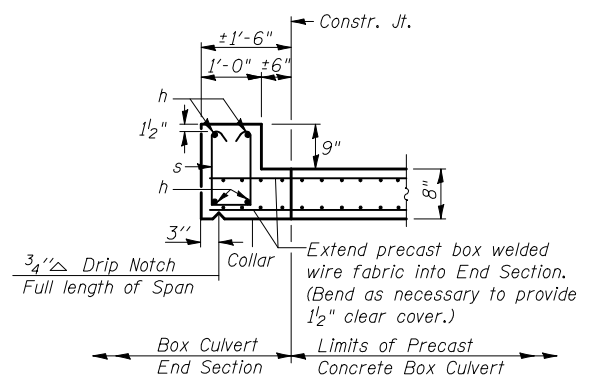
CORNER DETAIL
 (Showing dimensions)



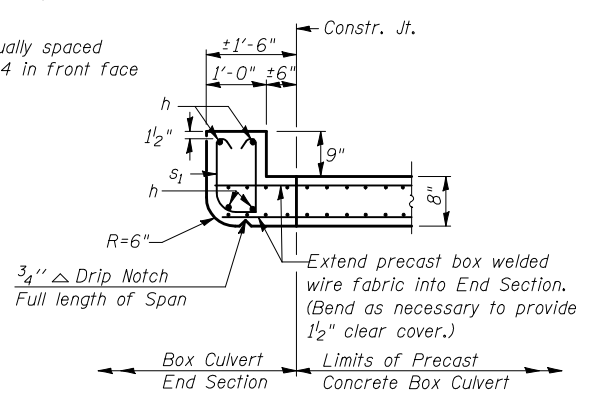
SECTION D-D
 (Showing reinforcement)



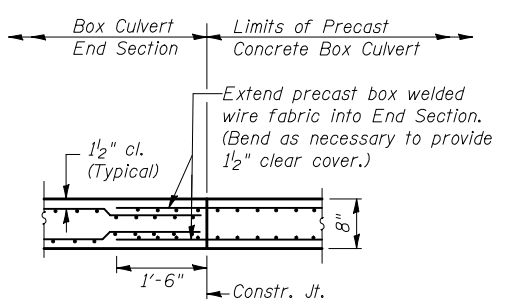
SECTION A-A
 DOWNSTREAM END



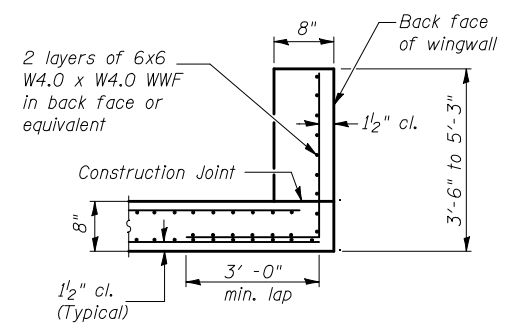
SECTION E-E
 TOP SLAB / HEADWALL DOWNSTREAM END



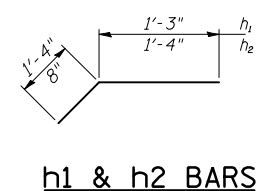
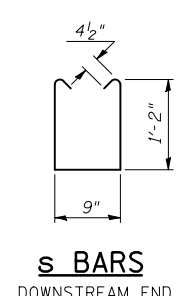
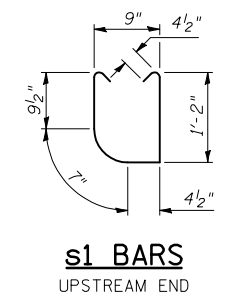
SECTION E-E
 TOP SLAB / HEADWALL UPSTREAM END



SECTION B-B
 BOTTOM SLAB



SECTION C-C
 WINGWALLS



BILL OF MATERIAL
 For Information Only
 (One End Section)

Bar	No.	Size	Length	Shape
h	4	#6	10'-5"	—
h ₁	10	#4	2'-7"	—
h ₂	10	#4	2'-0"	—
s or s ₁	10	#4	3'-10"	U U
v	18	#5	4'-10"	—
Item		Unit	Total	
Concrete Box Culverts		Cu. Yd.	6.5	
Reinforcement Bars		Pound	210.0	
Welded Wire Fabric		Sq. Ft.	391.0	

END SECTION DETAILS
SINGLE 8'x3' PRECAST BOX CULVERT
F.A.P. ROUTE 741 - SECTION (8,9,10)CR
STATION 836+74.00, S.N. 074-8065
CULVERT NO. 3

FILE NAME =	USER NAME = hennessdm	DESIGNED -	REVISED -
ct:\pw\work\p\dot\hennessdm\d0184799\0570800-sht-Details.dgn		DRAWN -	REVISED -
PLOT SCALE = 40.0000' / IN.		CHECKED -	REVISED -
PLOT DATE = 10/19/2010		DATE -	REVISED -

STATE OF ILLINOIS
DEPARTMENT OF TRANSPORTATION

BOX CULVERT END SECTION DETAILS
S.N. 074-8065 (CULVERT #3)

SCALE: SHEET NO. 2 OF 3 SHEETS STA. TO STA.

F.A.P. RTE. 741	SECTION (8,9,10)CR	COUNTY Plat+	TOTAL SHEETS 65	SHEET NO. 30
ILLINOIS FED. AID PROJECT			CONTRACT NO. 70800	