

F.A.I. RTE.	SECTION	COUNTY	TOTAL SHEETS	SHEET NO.
39	57-(2,3,4)PATCHING-1	MCLEAN	16	1
		ILLINOIS	CONTRACT NO. 70878	

STATE OF ILLINOIS
DEPARTMENT OF TRANSPORTATION

DIVISION OF HIGHWAYS

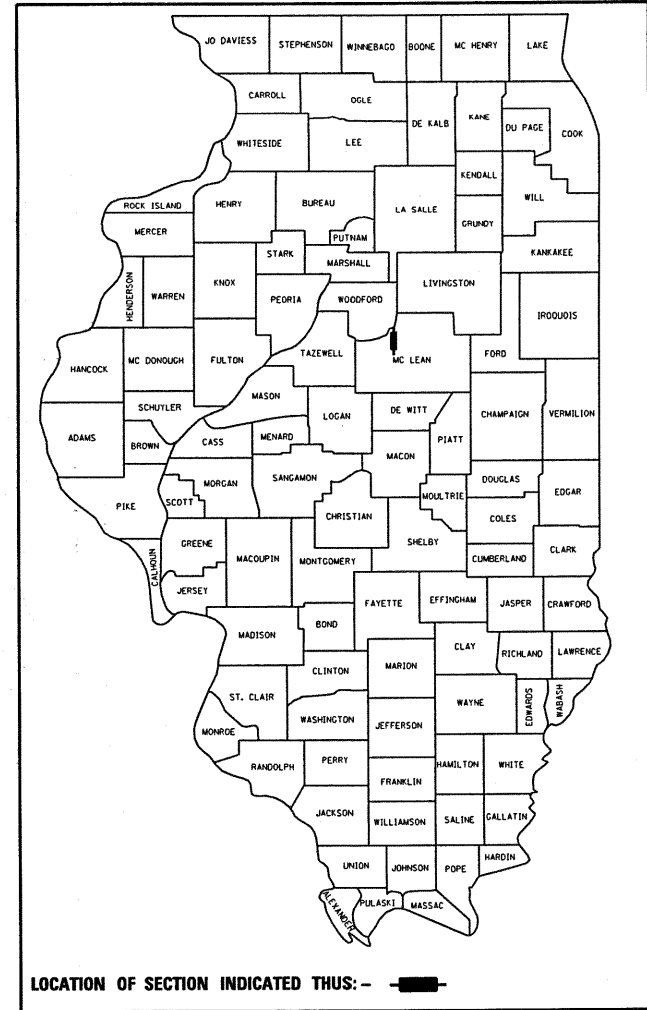
**PROPOSED
HIGHWAY PLANS**

F.A.I. ROUTE 39 (I-39)
SECTION 57(2,3,4)PATCHING-1

MCLEAN COUNTY

C-95-055-10
PATCHING FROM I-55 TO WOODFORD COUNTY LINE

D-95-055-10



FOR INDEX OF SHEETS, SEE SHEET NO. 2
FOR SUMMARY OF QUANTITIES, SEE SHEET NO. 4

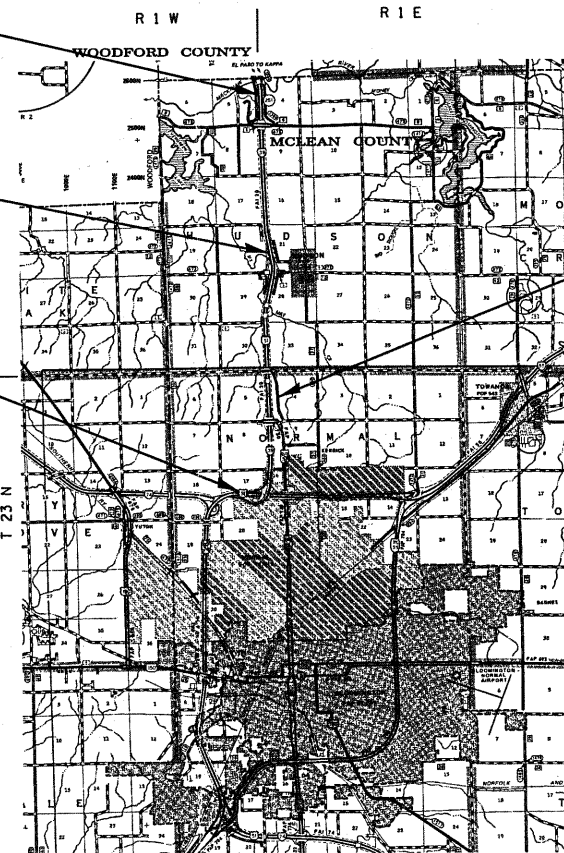
CURRENT ADT = 19,900 (2009)

DESIGN DESIGNATION
INTERSTATE
N/A

PROJECT ENDS
STATION 557+87.88

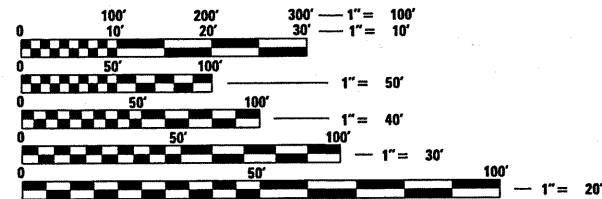
STATION EQUATION
STA 377+24.54 (BK) =
STA 377+00.00 (AH)

PROJECT BEGINS
STATION 41+92 I-39 NB
STATION 77+32 I-39 SB
STATION 30+00 RAMP A
STATION 10+00 RAMP B



STA. 198+61.67

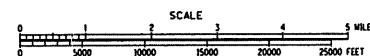
RURAL
URBAN



FULL SIZE PLANS HAVE BEEN PREPARED USING STANDARD ENGINEERING SCALES. REDUCED SIZED PLANS WILL NOT CONFORM TO STANDARD SCALES. IN MAKING MEASUREMENTS ON REDUCED PLANS, THE ABOVE SCALES MAY BE USED.

J.U.L.I.E.
JOINT UTILITY LOCATION INFORMATION FOR EXCAVATION
1-800-892-0123
OR 811

PROJECT ENGINEER : KEVIN TRAPP (217) 465-4181
PROJECT MANAGER : JEFF SHERER
DESIGNER : RANDY AUSTIN
CONTRACT NO. 70878



TOTAL LENGTH OF SECTION & PROJECT = 51,620.42 FEET = 9.777 MILES
NET LENGTH OF SECTION & PROJECT = 51,620.42 FEET = 9.777 MILES

STATE OF ILLINOIS
DEPARTMENT OF TRANSPORTATION
DIVISION OF HIGHWAYS

SUBMITTED October 25 20 10
Joseph E. Lane DEPUTY DIRECTOR OF HIGHWAYS, REGION ENGINEER
Dec 10 20 10
Scott E. Stitt P.E. acting ENGINEER OF DESIGN AND ENVIRONMENT
Dec 10 20 10
Christine M. Reed DIRECTOR OF HIGHWAYS, CHIEF ENGINEER

PRINTED BY THE AUTHORITY
OF THE STATE OF ILLINOIS