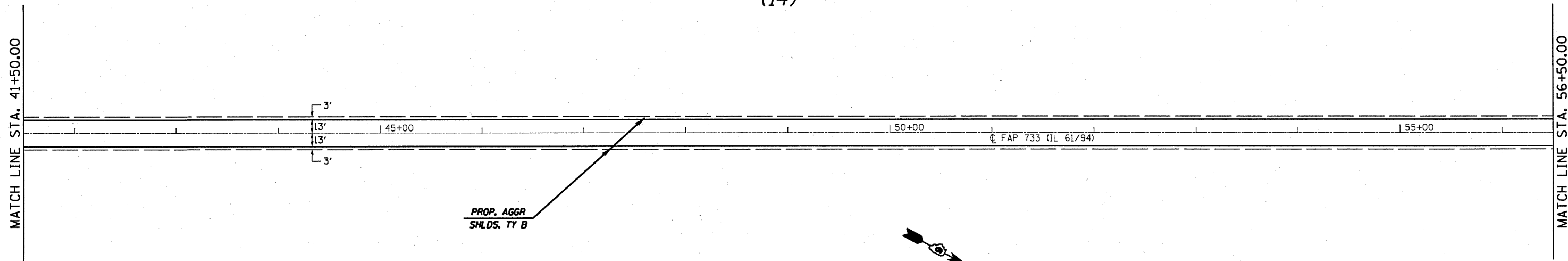
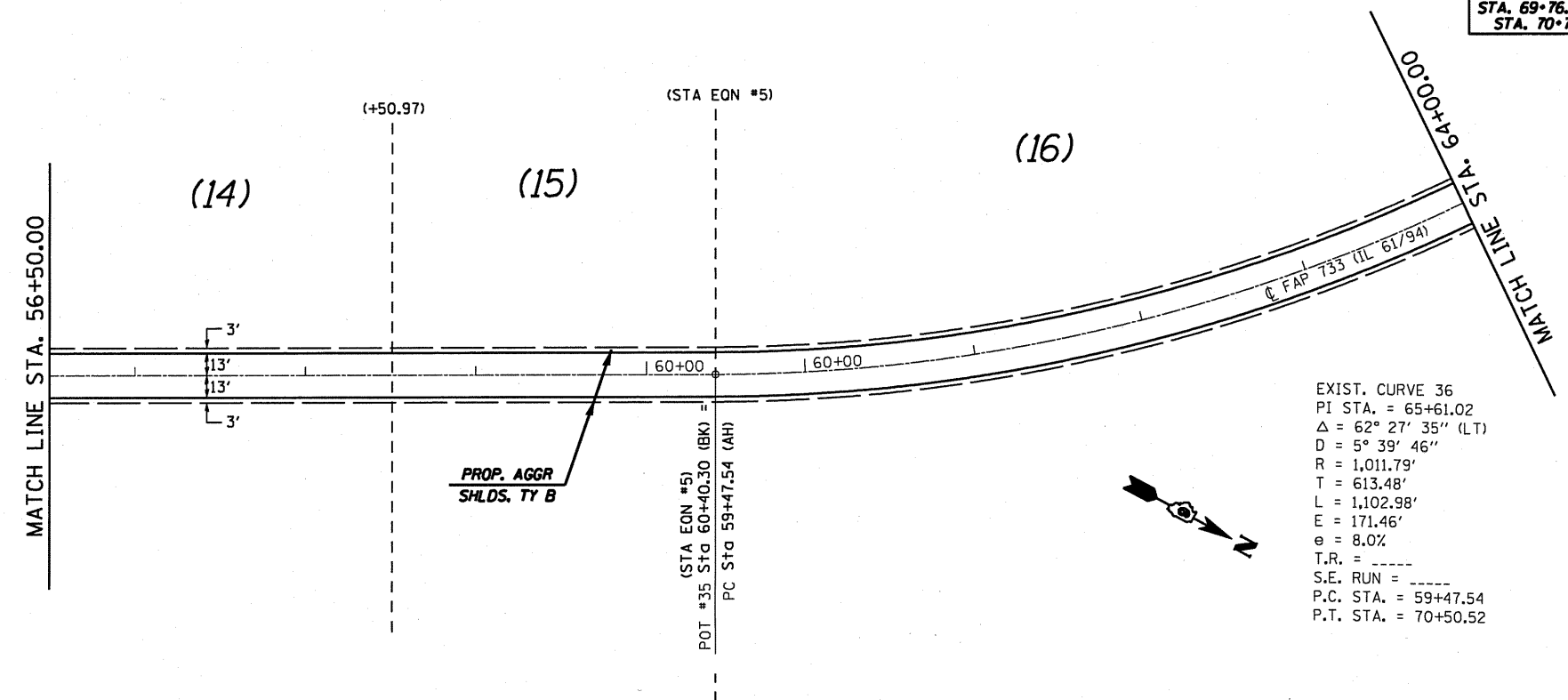


(14)



<b>FULL S.E.:</b> STA. 60+21.41 TO 69+76.66 <b>S.E. TRANSITION:</b> STA. 58+50.97 TO 60+40.30 (BK) = STA. 59+47.54 (AH) TO 60+21.41 STA. 69+76.66 TO 70+50.53 (BK) = STA. 70+74.06 (AH) TO 72+63.39	<b>FULL S.E.:</b> STA. 60+24.20 TO 69+73.86 <b>S.E. TRANSITION:</b> STA. 58+86.97 TO 60+40.30 (BK) = STA. 59+47.54 (AH) TO 60+24.20 STA. 69+73.86 TO 70+50.53 (BK) = STA. 70+74.06 (AH) TO 72+27.39
---	---

(16)



EXIST. CURVE 36  
 PI STA. = 65+61.02  
 $\Delta$  = 62° 27' 35" (LT)  
 D = 5° 39' 46"  
 R = 1,011.79'  
 T = 613.48'  
 L = 1,102.98'  
 E = 171.46'  
 e = 8.0%  
 T.R. = -----  
 S.E. RUN = -----  
 P.C. STA. = 59+47.54  
 P.T. STA. = 70+50.52

FILE NAME =	USER NAME = coxjw	DESIGNED -	REVISED -	<b>STATE OF ILLINOIS DEPARTMENT OF TRANSPORTATION</b>	<b>PLAN VIEW</b>		F.A.P. RTE.	SECTION	COUNTY	TOTAL SHEETS	SHEET NO.
ci:\pw\work\p\dot\coxjw\d0215198\d672880	sh-t-plan58.dgn	DRAWN - JWC	REVISED -		733	IRS-3, 7RS-5		48	33		
PLOT SCALE = 100.0000' / IN.	CHECKED - RSC	REVISED -	REVISED -		CONTRACT NO. 72880			ILLINOIS FED. AID PROJECT			
PLOT DATE = Sep-06-2010 10:42:30AM	DATE -	REVISED -	REVISED -		SCALE:	SHEET NO. 18 OF 23 SHEETS	STA. 41+50.00 TO STA. 64+00.00	ADAMS, HANCOCK			