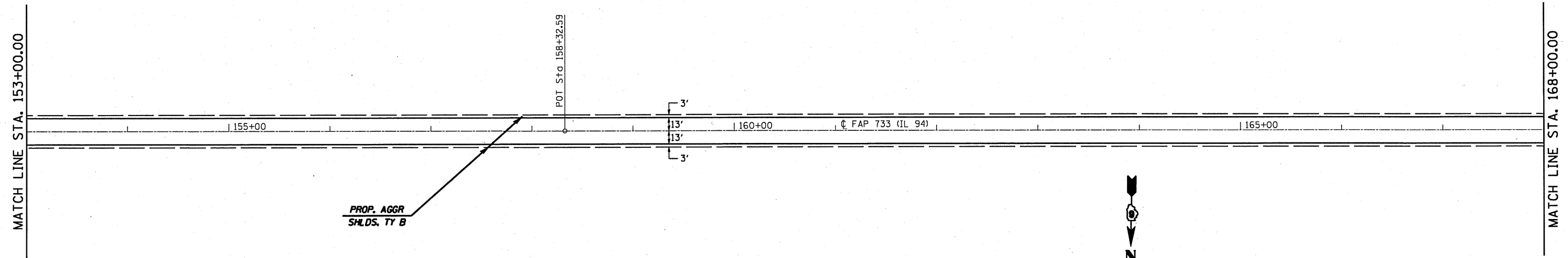
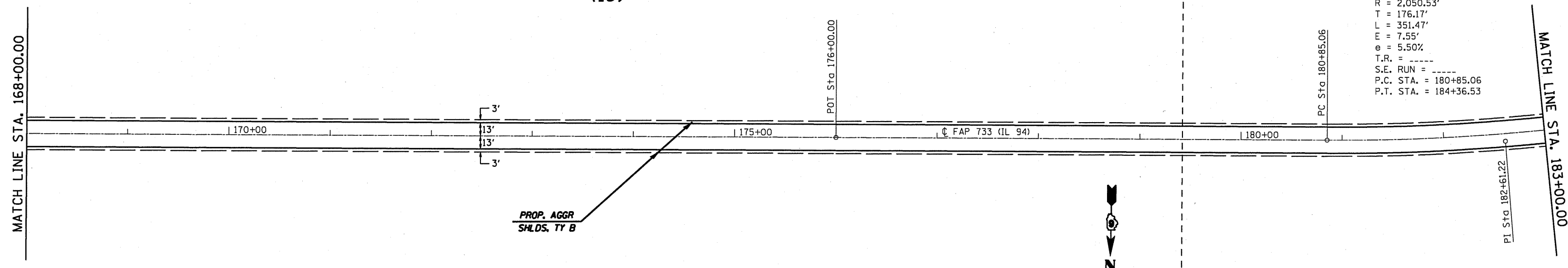


(19)



(19)

(20)



EXIST. CURVE 253
 PI STA. = 182+61.22
 $\Delta = 9^\circ 49' 15''$ (LT)
 $D = 2^\circ 47' 39''$
 $R = 2,050.53'$
 $T = 176.17'$
 $L = 351.47'$
 $E = 7.55'$
 $e = 5.50\%$
 $T.R. = \text{---}$
 $S.E. \text{ RUN} = \text{---}$
 $P.C. \text{ STA.} = 180+85.06$
 $P.T. \text{ STA.} = 184+36.53$

FULL S.E. (S.E.#3 = 5.5%)
 STA. 181+35.83 TO 183+85.76
S.E. TRANSITION:
 STA. 179+41.93 TO 181+35.83
 STA. 183+85.76 TO 185+79.66

FULL S.E. (S.E.#3 = 5.5%)
 STA. 181+33.63 TO 183+87.78
S.E. TRANSITION:
 STA. 179+39.74 TO 181+33.63
 STA. 183+87.78 TO 185+81.68

FILE NAME =	USER NAME = coxjw	DESIGNED -	REVISED -	STATE OF ILLINOIS DEPARTMENT OF TRANSPORTATION	PLAN VIEW			F.A.P. RTE.	SECTION	COUNTY	TOTAL SHEETS	SHEET NO.
ci:\pwwork\pwwork\coxjw\d0215198\d672888	shp-plan08.dgn	DRAWN - JWC	REVISED -		733	IRS-3, TRS-5		48	37			
		CHECKED - RSC	REVISED -		SCALE: 50 SHEET NO. 22 OF 23 SHEETS STA. 153+00.00 TO STA. 183+00.00			CONTRACT NO. 72880				
		DATE -	REVISED -		ILLINOIS FED. AID PROJECT							