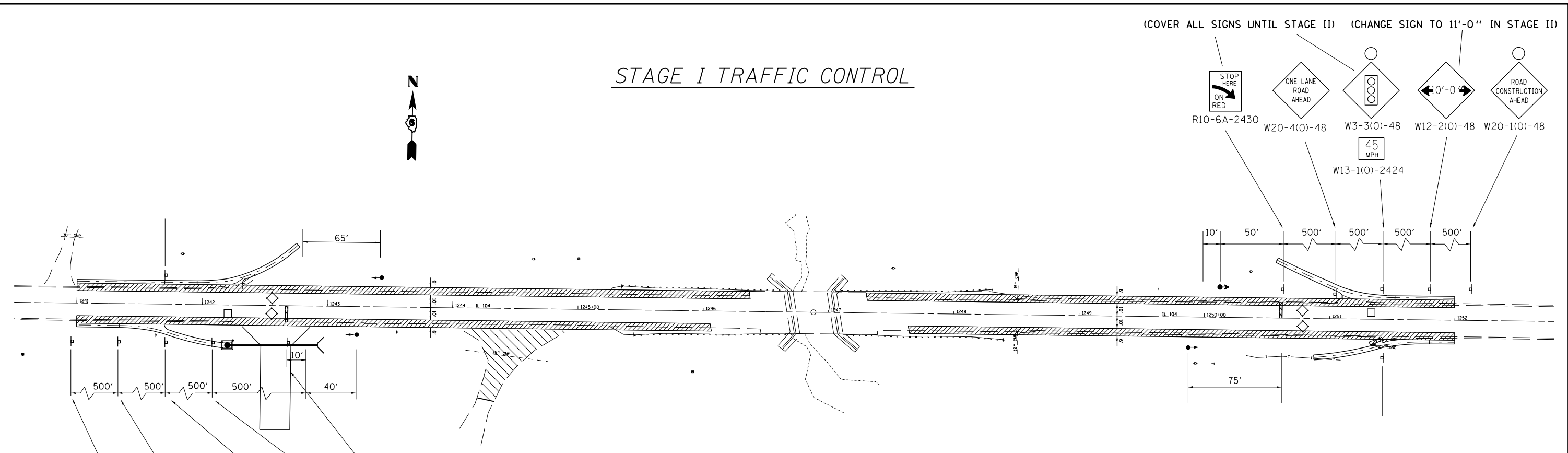


STAGE I TRAFFIC CONTROL



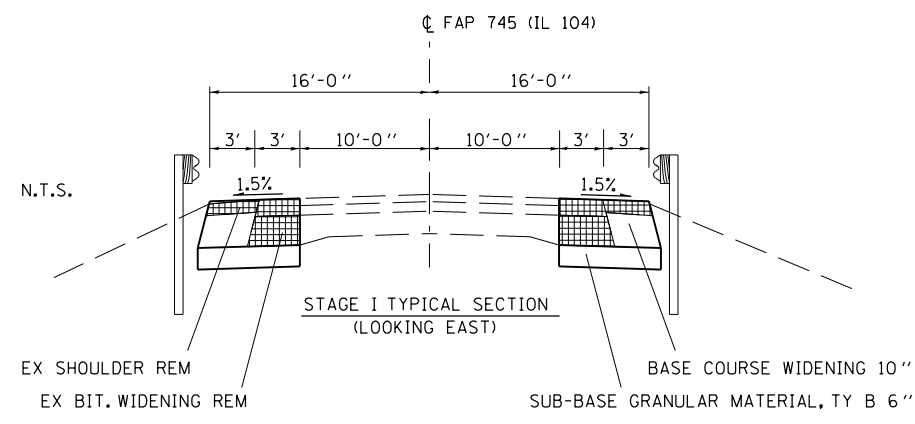
Sequence of Stage I Construction

1. Relocate Field Entrance prior to Stage II Construction
2. Set up traffic control as per TC&P 701326 and this detail.
3. Construct Base Cse Widening, 10" LT & RT.
4. Install temporary bridge traffic signals, temporary concrete barrier, vertical panels, drums, and impact attenuators as per staging plan sheets and TC&P 701321 including removal of conflicting pavement markings.

NOTES

1. "Excavation for construction on both sides of the pavement at any one location will not be permitted" as per specification 701.08 of the "Standard Specifications for Road and Bridge Construction" January 1, 2007
2. Concrete may be used for Base Cse Widening, 10" LT & RT, tie bars shall be included the cost. Tie bars shall be place on 24" center as per specification 442.06 of the "Standard Specifications for Road and Bridge Construction" January 1, 2007.

(CHANGE SIGN TO 11'-0" IN STAGE II)
(COVER ALL SIGNS UNTIL STAGE II)



LEGEND

- PAVEMENT REMOVAL
- IMPACT ATTENUATOR, NARROW
- TEMPORARY BARRIER WALL
- EXISTING STRUCTURE TO BE REMOVED
- HOT-MIX ASPHALT BASE CSE WID, 10"
- DOUBLE VERTICAL PANEL
- SIGN
- N.T.S. - NOT TO SCALE
- INDUCTION LOOP DETECTOR
- TEMPORARY BRIDGE TRAFFIC SIGNALS
- DRUM WITH STEADY BURNING LIGHT
- 24" STOP BAR
- TYPE III BARRICADES
- TYPE C BIDIRECTIONAL REFLECTOR
- STEADY BURNING LIGHTS AND DOUBLE VERTICAL PANELS

FILE NAME =	USER NAME = laughlir1	DESIGNED -	REVISED -	STATE OF ILLINOIS DEPARTMENT OF TRANSPORTATION	IL 104 OVER GRINDSTONE CREEK STAGE I CONSTRUCTION			F.A.P. RTE.	SECTION	COUNTY	TOTAL SHEETS	SHEET NO.
et:\pw\work\pwidot\laughlir1\0215213\0672898-Stage Construction.dgn	PLOT SCALE = 80.0000' / in.	DRAWN -	REVISED -					745	107B-1	ADAMS	86	19
	PLOT DATE = Oct-14-2010 09:42:38AM	CHECKED -	REVISED -		SCALE: SHEET NO. OF SHEETS STA. TO STA.			CONTRACT NO. 72B98				
		DATE -	REVISED -		ILLINOIS FED. AID PROJECT							