

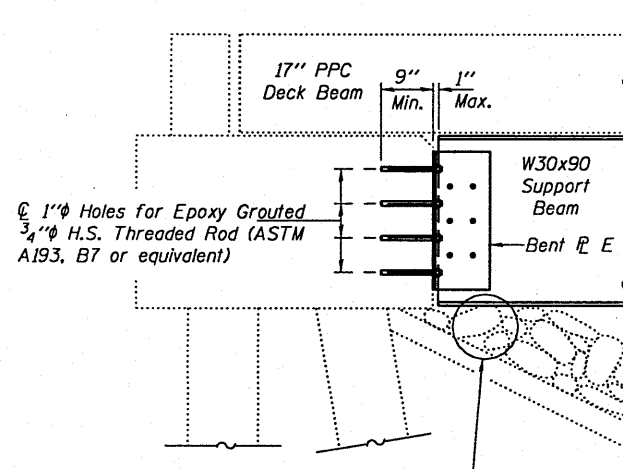
**CROSS-SECTION THRU SPAN 1,  
BEAMS 2 & 9 AND SPAN 3,  
BEAMS 5 & 9 AT ABUTMENTS**

**CROSS-SECTION THRU SPAN 1,  
BEAMS 2 & 9 AND SPAN 3,  
BEAMS 5 & 9 AT PIERS**

**CROSS-SECTION THRU  
SPAN 2, BEAMS 7 & 8**

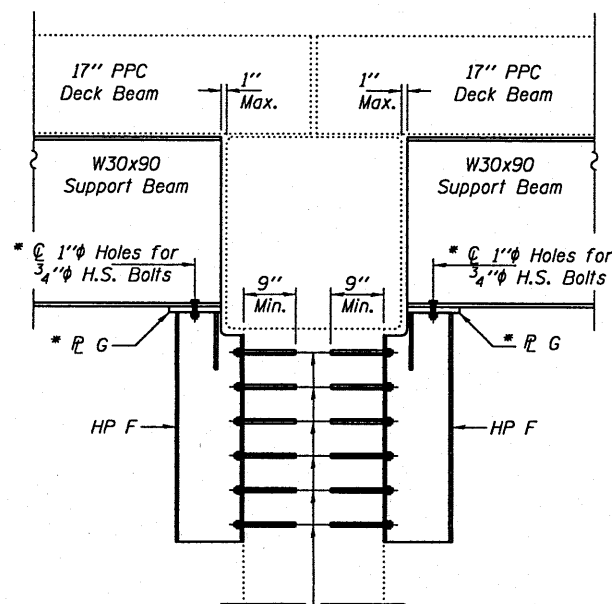
**CROSS-SECTION THRU  
SPAN 2, BEAM 1**

\*\* Tie R B (Span 3, Beam 5)  
Tie R C (Span 1, Beams 2  
& 9; Span 3, Beam 9)



Excavate riprap as required to facilitate installation of W30x90 Support Beam. Cost included with Furnishing & Erecting Structural Steel. (Typical at each abutment.)

**TYPICAL SECTION THRU ABUTMENTS**

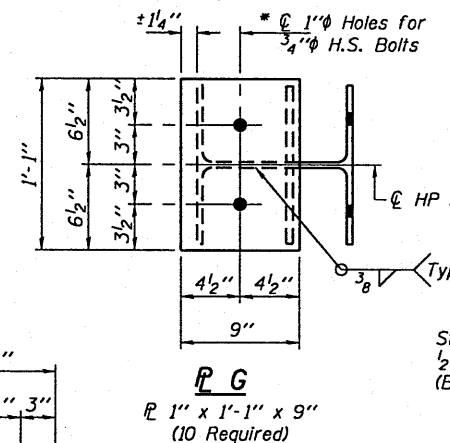


1" Holes for Epoxy Grouted 3/4" H.S. Threaded Rod (ASTM A193, B7 or equivalent)

**TYPICAL SECTION THRU PIERS**

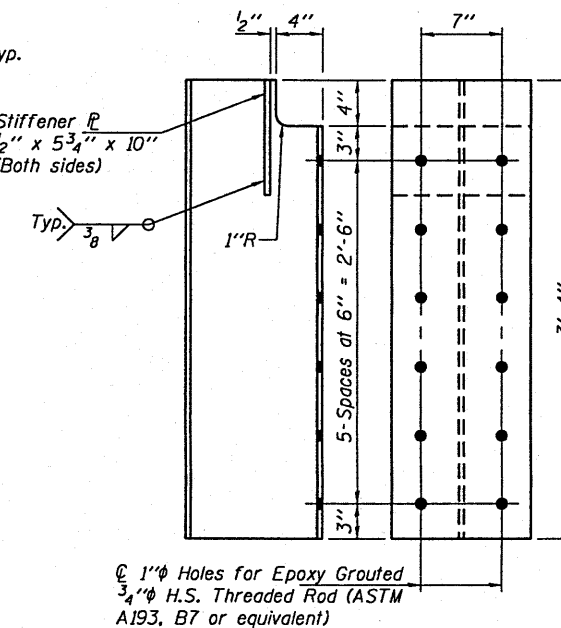
\* Use holes in R G to field drill holes in Support Beam.

1" Holes for Epoxy Grouted 3/4" H.S. Threaded Rod (ASTM A193, B7 or equivalent)



**BENT R E**

R 1/2" x 1'-10" x 2'-0"  
(8 Required)



**HP F**

HP12x53 x 3'-4"  
(10 Required)

DESIGNED - VHV	EXAMINED - <i>Carl Koenig</i>	DATE - NOVEMBER 15, 2010
CHECKED - ADY	ENGINEER OF STRUCTURAL SERVICES	
DRAWN - Kyle M. Steffen	PASSED - <i>Ralph E. Anderson</i>	
CHECKED - VHV ADY	ENGINEER OF BRIDGES AND STRUCTURES	

STATE OF ILLINOIS  
DEPARTMENT OF TRANSPORTATION

P.P.C. DECK BEAM SUPPORT DETAILS  
SN 096-0063

F.A.P. RTE.	SECTION	COUNTY	TOTAL SHEETS	SHEET NO.
823	D7 BEAM REPAIR 2011-2	WAYNE	4	4
CONTRACT NO. 74502				

SHEET NO. 2 OF 2 SHEETS

ILLINOIS FED. AID PROJECT