

F.A.I. RTE.	SECTION	COUNTY	TOTAL SHEETS	SHEET NO.
270	DIST 08 ITS 2011-1	MADISON	17	1
FED. ROAD DIST. NO.	ILLINOIS	CONTRACT NO. 76D09		

INDEX OF SHEETS

1. COVER SHEET
2. PLAN SHEET LAYOUT W/TRAFFIC VOLUME, T C & P & ITS ELEMENT SCHEDULES
3. SUMMARY OF QUANTITIES
4. LEGEND AND GENERAL NOTES
5. RADAR VEHICLE DETECTION DETAILS
6. POLE MOUNTED CCTV DETAIL WITH CAMERA LOWERING DEVICE 1 OF 2
7. POLE MOUNTED CCTV DETAIL WITH CAMERA LOWERING DEVICE 2 OF 2 AND SERVICE INSTALLATION DETAILS
8. MULTI-DUCT CONDUIT INSTALLATION OVER RAILROAD TRACKS
9. ITS PLAN 1A & 1B OF 4
10. ITS PLAN 2A & 2B OF 4
11. ITS PLAN 3A & 3B OF 4
12. ITS PLAN 4A & 4B OF 4
13. COMMUNICATION SYSTEM COVER SHEET
14. TERMINATION-SPLICES TOTALS & SWITCH SCHEDULE
15. COMMUNICATION SHEET MP027003.2 CABINET
16. COMMUNICATION SHEET MP027004.1 CABINET TO MP027004.5 CABINET
17. SOIL BORING LOGS

STANDARDS

701101-02	701106-02	701201-04
701400-05	701406-06	701411-07
701446-08	701456-01	701901-01
814001-02	814806-02	878001-08

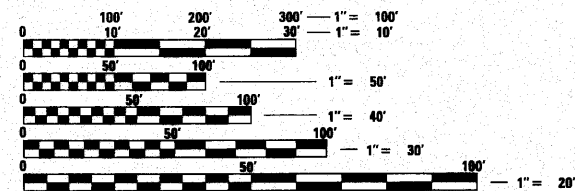
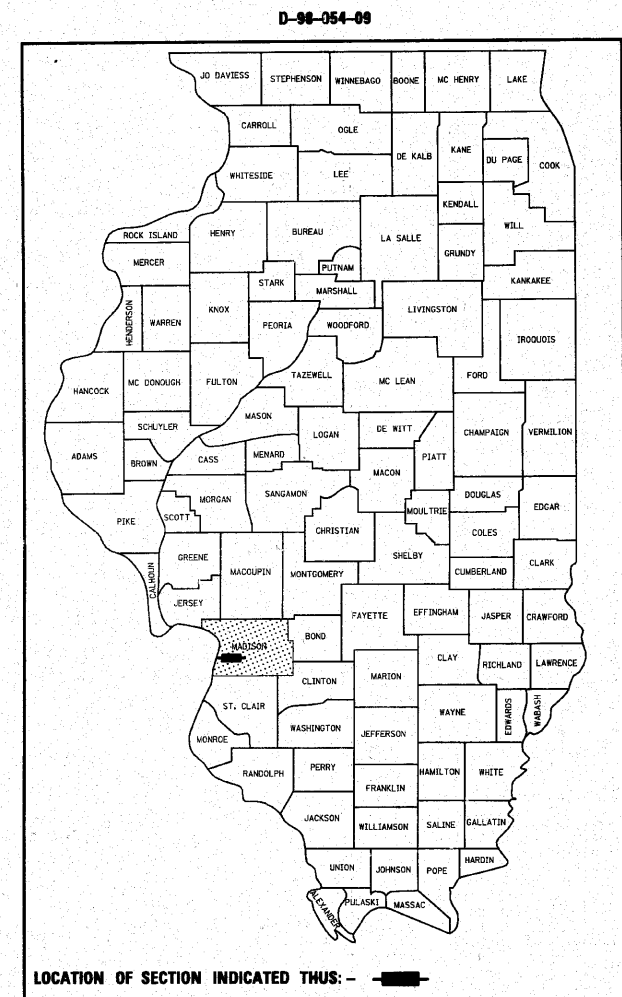
834001

STATE OF ILLINOIS
DEPARTMENT OF TRANSPORTATION
DIVISION OF HIGHWAYS
**PROPOSED
HIGHWAY PLANS**

F.A.I. ROUTE 270
SECTION DIST 8 ITS 2011-1
PROJECT: CMI-270-5(084)002
MADISON COUNTY

**ITS COMMUNICATION, DETECTION AND SURVEILLANCE
DEVICES ON I-270 FROM THE IL 3 INTERCHANGE
TO THE IL 203 INTERCHANGE**

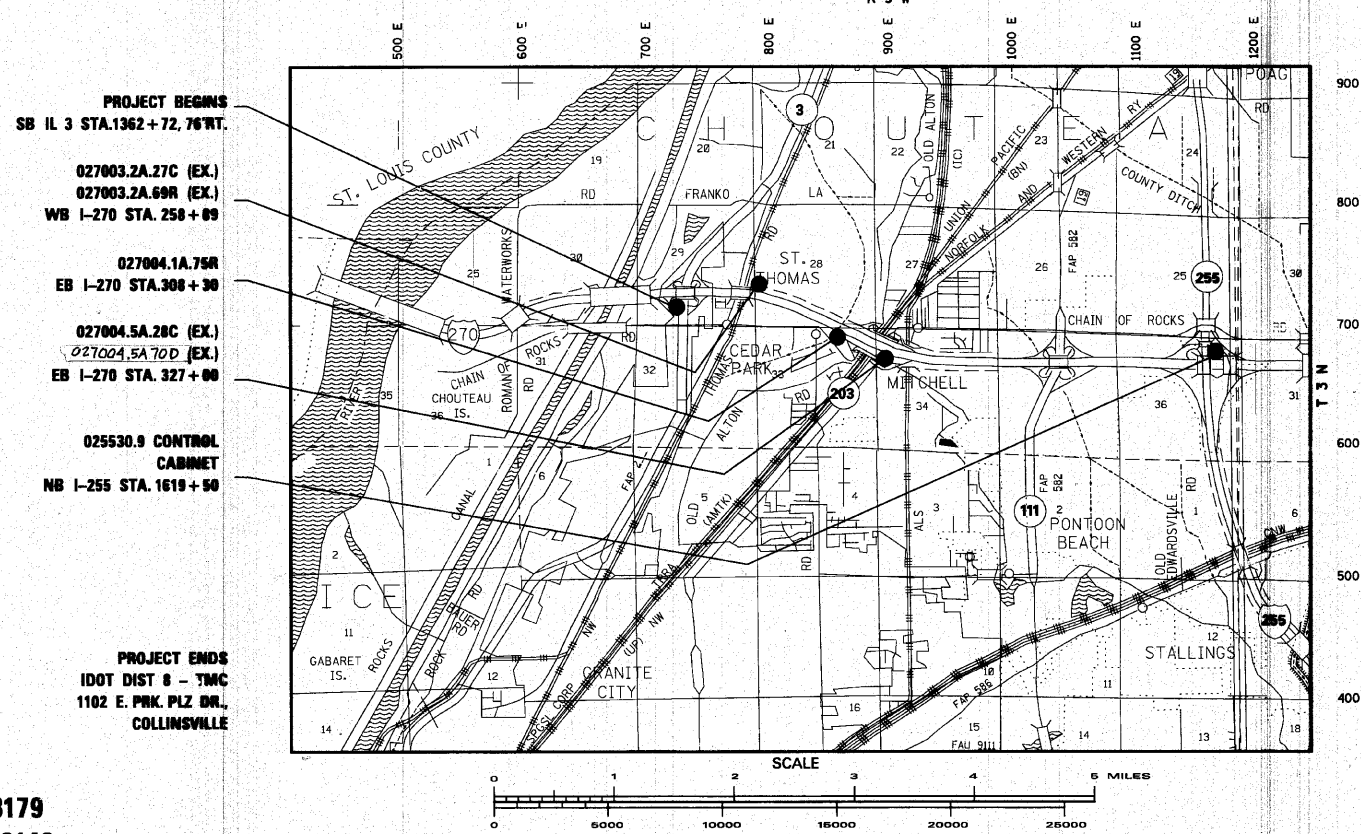
C-75-004-11



FULL SIZE PLANS HAVE BEEN PREPARED USING STANDARD ENGINEERING SCALES. REDUCED SIZED PLANS WILL NOT CONFORM TO STANDARD SCALES. IN MAKING MEASUREMENTS ON REDUCED PLANS, THE ABOVE SCALES MAY BE USED.

J.U.L.I.E.
JOINT UTILITY LOCATION INFORMATION FOR EXCAVATION
1-800-892-0123
OR 811

PROJECT ENGINEER: PATTI LeBEAU (618) 346-3179
SQUAD LEADER: MICHAEL PRESTON (618) 346-3143
LIAISON ENGINEER: LINDA LEONARD (618) 346-3285
CONTRACT NO. 76D09



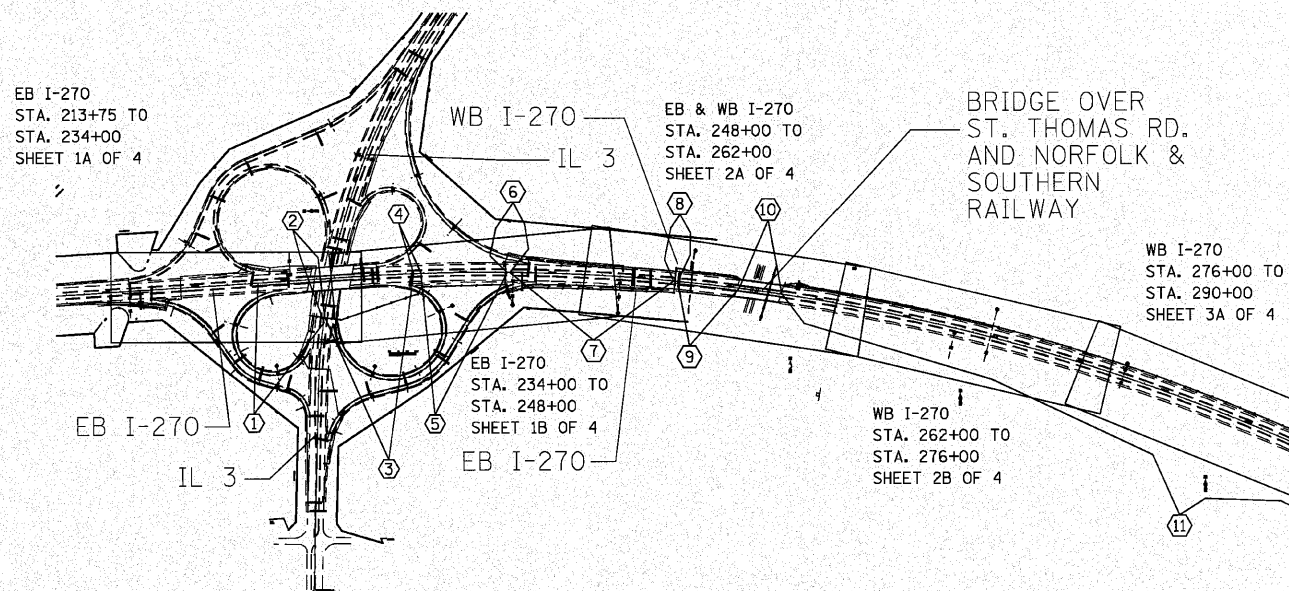
STATE OF ILLINOIS
DEPARTMENT OF TRANSPORTATION
DIVISION OF HIGHWAYS

SUBMITTED Oct 20 2010
My Chami
DEPUTY DIRECTOR OF HIGHWAYS, REGION 5 ENGINEER

December 10 2010
Scott E. Stitt P.E. J.E.
ASSISTING ENGINEER OF DESIGN AND ENVIRONMENT

December 10 2010
Christine M. Reed J.E.
DIRECTOR OF HIGHWAYS, CHIEF ENGINEER

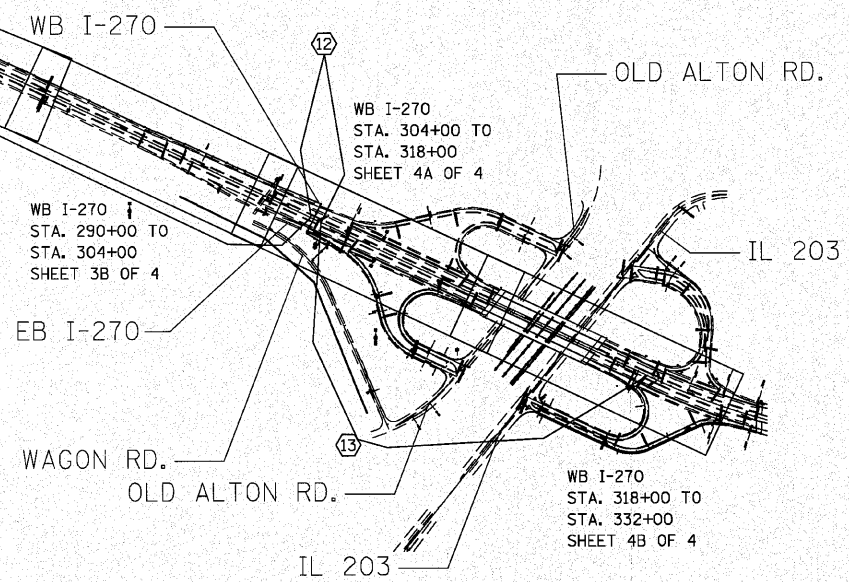
**PRINTED BY THE AUTHORITY
OF THE STATE OF ILLINOIS**



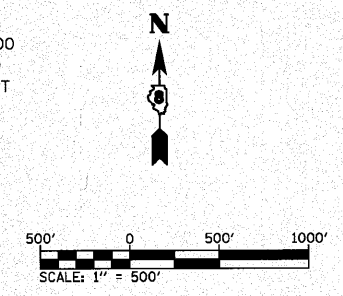
ITS ELEMENTS	STA.	PLAN SHEET
CCTV		
027003.2A.27C(EX.)	258+89	2A OF 4
027004.5A.28C(EX.)	327+00	4B OF 4
DETECTION		
027003.2A.69R(EX.)	258+89	2A OF 4
027004.1E.75R	308+30,100'RT	4A OF 4
027004.5A.70D(EX.)	327+00	4B OF 4

FIELD EQUIPMENT NUMBERING SYSTEM	
EXAMPLE : 006402.8W.11D	
0064	DESIGNATES HIGHWAY WHERE FIELD EQUIPMENT IS LOCATED.
006402.8	DESIGNATES MILE MARKER WHERE FIELD EQUIPMENT IS LOCATED.
006402.8W	DESIGNATES DIRECTION VIDEO DETECTOR IS MONITORING TRAFFIC OR DIRECTION TRAFFIC IS TRAVELLING TO RECEIVE DMS MESSAGE.
006402.8W.11	NUMBER ASSIGNED TO THAT FIELD EQUIPMENT
006402.8W.11D	A = ALL DIRECTIONS D = VEHICLE DETECTION C = CAMERA (P/T/Z SURVEILLANCE) H = HAR SIGNAGE WITH BEACON R = RADAR DETECTION

TRAFFIC VOLUME SCHEDULE				
LOCATION	YEAR	ADT (ESTIMATED)	SU%	MUX
EB I-270 TO OLD ALTON RD.	2010	225	4.4	0.0
EB I-270 FROM IL 3 TO OLD ALTON RD.	2010	26200	4.3	17.7
WB I-270 FROM IL 3 TO OLD ALTON RD.	2010	19700	4.3	17.7
EB I-270 WEST OF IL 3	2010	29800	2.8	16.3
WB I-270 WEST OF IL 3	2010	28300	2.2	16.4
NB IL 3 RAMP TO EB I-270	2010	2250	5.7	17.0
EB I-270 RAMP TO NB IL 3	2010	1950	4.2	7.9
NB IL 3 (S. OF I-270)	2010	9600	6.8	7.4
SB IL 3 (S. OF I-270)	2010	9800	7.7	7.7
SB IL 3 RAMP TO EB I-270	2010	1200	7.0	10.9
EB I-270 RAMP TO SB IL 3	2010	2600	4.9	7.8



14
NORTH OF I-270 STA. 469+00
@ NB I-255 STA. 1619+50
MP30.9 CONTROLLER CABINET



LANE RESTRICTIONS SCHEDULE

SUNDAY				MONDAY				TUESDAY				WEDNESDAY			
LANE RESTRICTIONS PERMITTED	NO LANE RESTRICTIONS PERMITTED							LANE RESTRICTIONS PERMITTED	NO LANE RESTRICTIONS PERMITTED			LANE RESTRICTIONS PERMITTED	NO LANE RESTRICTIONS PERMITTED		
12A 3A 5A 9A 10A 12P 3P 4P 6P 9P	12A 3A 5A 9A 12P 3P 6P 9P	12A 3A 5A 9A 12P 3P 6P 9P	12A 3A 5A 9A 12P 3P 6P 9P	12A 3A 5A 9A 12P 3P 6P 9P	12A 3A 5A 9A 12P 3P 6P 9P	12A 3A 5A 9A 12P 3P 6P 9P	12A 3A 5A 9A 12P 3P 6P 9P	12A 3A 5A 9A 12P 3P 6P 9P	12A 3A 5A 9A 12P 3P 6P 9P	12A 3A 5A 9A 12P 3P 6P 9P	12A 3A 5A 9A 12P 3P 6P 9P	12A 3A 5A 9A 12P 3P 6P 9P	12A 3A 5A 9A 12P 3P 6P 9P	12A 3A 5A 9A 12P 3P 6P 9P	
WEDNESDAY				THURSDAY				FRIDAY				SATURDAY			
NO LANE RESTRICTIONS PERMITTED				LANE RESTRICTIONS PERMITTED	NO LANE RESTRICTIONS PERMITTED				LANE RESTRICTIONS PERMITTED	NO LANE RESTRICTIONS PERMITTED				LANE RESTRICTIONS PERMITTED	
12P 3P 6P 9P	12A 3A 5A 9A 12P 3P 6P 9P	12A 3A 5A 9A 12P 3P 6P 9P	12A 3A 5A 9A 12P 3P 6P 9P	12A 3A 5A 9A 12P 3P 6P 9P	12A 3A 5A 9A 12P 3P 6P 9P	12A 3A 5A 9A 12P 3P 6P 9P	12A 3A 5A 9A 12P 3P 6P 9P	12A 3A 5A 9A 12P 3P 6P 9P	12A 3A 5A 9A 12P 3P 6P 9P	12A 3A 5A 9A 12P 3P 6P 9P	12A 3A 5A 9A 12P 3P 6P 9P	12A 3A 5A 9A 12P 3P 6P 9P	12A 3A 5A 9A 12P 3P 6P 9P		

TRAFFIC CONTROL AND PROTECTION ZONES

TRAFFIC CONTROL AND PROTECTION STANDARDS	① EB I-270 228+63 TO SB IL 3 1362+72	② SB IL 3 1362+72 TO NB IL 3 1362+81	③ NB IL 3 1362+81 TO EB I-270 237+85	④ EB I-270 237+85 TO EB I-270 242+67	⑤ EB I-270 242+67 TO EB I-270 242+83	⑥ EB I-270 242+83 TO EB I-270 251+95	⑦ EB I-270 251+95 TO WB I-270 251+95	⑧ WB I-270 251+95 TO WB I-270 255+70	⑨ WB I-270 255+70 TO WB I-270 258+12	⑩ WB I-270 258+12 TO WB I-270 307+00	⑪ WB I-270 307+00 TO EB I-270 327+50	⑫ EB I-270 307+00 TO 308+18	⑬ I-270 469+00 @ NB I-255 MP30.9	TOTALS
701101	X	X	X	X	X	X	X	X	X	X	X	X	X	NA
701106	X	X	X	X	X	X	X	X	X	X	X	X	X	NA
701201														1.00 L SUM
701400														NA
701406		0.25 L SUM		0.125 L SUM			0.25 L SUM	0.125 L SUM		0.25 L SUM				1.00 L SUM
701411		2.00 EACH		2.00 EACH			2.00 EACH	2.00 EACH		1.00 EACH				9.00 EACH
701456		0.20 L SUM		0.20 L SUM		0.20 L SUM				0.20 L SUM				1.00 L SUM

*USE 701400, ALSO

SUMMARY OF QUANTITIES

*URBAN
90% FED. / 10% STATE*

*URBAN
90% FED.
10% STATE*

SUMMARY OF QUANTITIES			CONSTRUCTION TYPE CODE 0021 TOTAL QUANTITIES
CODE NO	ITEM	UNIT	
25000210	SEEDING, CLASS 2A	ACRE	0.8
25000400	NITROGEN FERTILIZER NUTRIENT	POUND	78
25000500	PHOSPHORUS FERTILIZER NUTRIENT	POUND	78
25000600	POTASSIUM FERTILIZER NUTRIENT	POUND	78
25100105	MULCH, METHOD 1	ACRE	0.8
28000250	TEMPORARY EROSION CONTROL SEEDING	POUND	87
28000500	INLET AND PIPE PROTECTION	EACH	12
67000400	ENGINEER'S FIELD OFFICE, TYPE A	CAL MO	7
67100100	MOBILIZATION	L SUM	1
70100420	TRAFFIC CONTROL AND PROTECTION, STANDARD 701411	EACH	9
70100450	TRAFFIC CONTROL AND PROTECTION, STANDARD 701201	L SUM	1
70100700	TRAFFIC CONTROL AND PROTECTION, STANDARD 701406	L SUM	1
70100825	TRAFFIC CONTROL AND PROTECTION, STANDARD 701456	L SUM	1
80300100	LOCATING UNDERGROUND CABLE	FOOT	7560
80500100	SERVICE INSTALLATION, TYPE A	EACH	1
81012500	CONDUIT IN TRENCH, 1 1/2" DIA., PVC	FOOT	130
81012800	CONDUIT IN TRENCH, 3" DIA., PVC	FOOT	140
81400700	HANDHOLE, PORTLAND CEMENT CONCRETE	EACH	15
81400720	DOUBLE HANDHOLE, PORTLAND CEMENT CONCRETE	EACH	2
81702130	ELECTRIC CABLE IN CONDUIT, 600V (XLP-TYPE USE) 1/C NO. 6	FOOT	500
81900200	TRENCH AND BACKFILL FOR ELECTRICAL WORK	FOOT	7560
83060830	LIGHT POLE, GALVANIZED STEEL, 45 FT. M. H., TENON MOUNT	EACH	1
83600300	LIGHT POLE FOUNDATION, 30" DIAMETER	FOOT	13.5
87100110	FIBER OPTIC CABLE IN CONDUIT, NO. 62.5/125, 6F	FOOT	2810
87900100	DRILL EXISTING FOUNDATION	EACH	2
87900200	DRILL EXISTING HANDHOLE	EACH	1
X0323150	JUNCTION BOX, ALUMINUM, ATTACHED TO STRUCTURE, 18" X 18" X 10"	EACH	2
X0325073	MODIFY EXISTING CONTROLLER CABINET TYPE B	EACH	1
X0325075	CONDUIT ATTACHED TO STRUCTURE, 4" DIA., FIBERGLASS BULLET RESISTANT	FOOT	60
X0325076	WIDE AREA NETWORK	L SUM	1
X0325077	FIBER OPTIC UTILITY MARKER	EACH	25

SUMMARY OF QUANTITIES			CONSTRUCTION TYPE CODE 0021 TOTAL QUANTITIES
CODE NO	ITEM	UNIT	
X0325476	RADAR VEHICLE DETECTION SYSTEM	EACH	1
X0325482	REMOVE EXISTING ITS EQUIPMENT	EACH	2
X0325483	SFP-GE-L SFP MODULE	EACH	4
X0325487	WIRED COMMUNICATION DATA CONVERTOR	EACH	2
X0326091	LIGHT POLE, STEEL 50 FT. WITH CAMERA LOWERING SYSTEM	EACH	1
X0326092	RELOCATE CLOSED CIRCUIT TELEVISION SURVEILLANCE CAMERA SYSTEM	EACH	1
X0326104	RELOCATE RADAR DETECTOR SYSTEM	EACH	1
X0326259	DIGITAL VIDEO ENCODER	EACH	1
X0326342	DIGITAL VIDEO DECODER	EACH	1
X0326912	3000 LAYER 2 SWITCH	EACH	1
X8100065	CONDUIT IN TRENCH, 4" DIA., PVC TYPE C	FOOT	7290
X8102020	CONDUIT PUSHED, 4" DIA., PVC SCHEDULE 80	FOOT	350
X8110128	CONDUIT ATTACHED TO STRUCTURE, 4" DIA., PVC TYPE C	FOOT	180
X8710075	FIBER OPTIC CABLE IN CONDUIT, 72 COND. S.M. F.O.	FOOT	8020
X8130250	JUNCTION BOX, ALUMINUM, ATTACHED TO STRUCTURE, 24" X 20" X 10"	EACH	1
X0327096	ETHERNET MODEM	EACH	2
Z0033090	ELECTRIC CABLE IN CONDUIT, TRACER, NO. 14 1C	FOOT	7130
Z0048665	RAILROAD PROTECTIVE LIABILITY INSURANCE	L SUM	1

Rev.

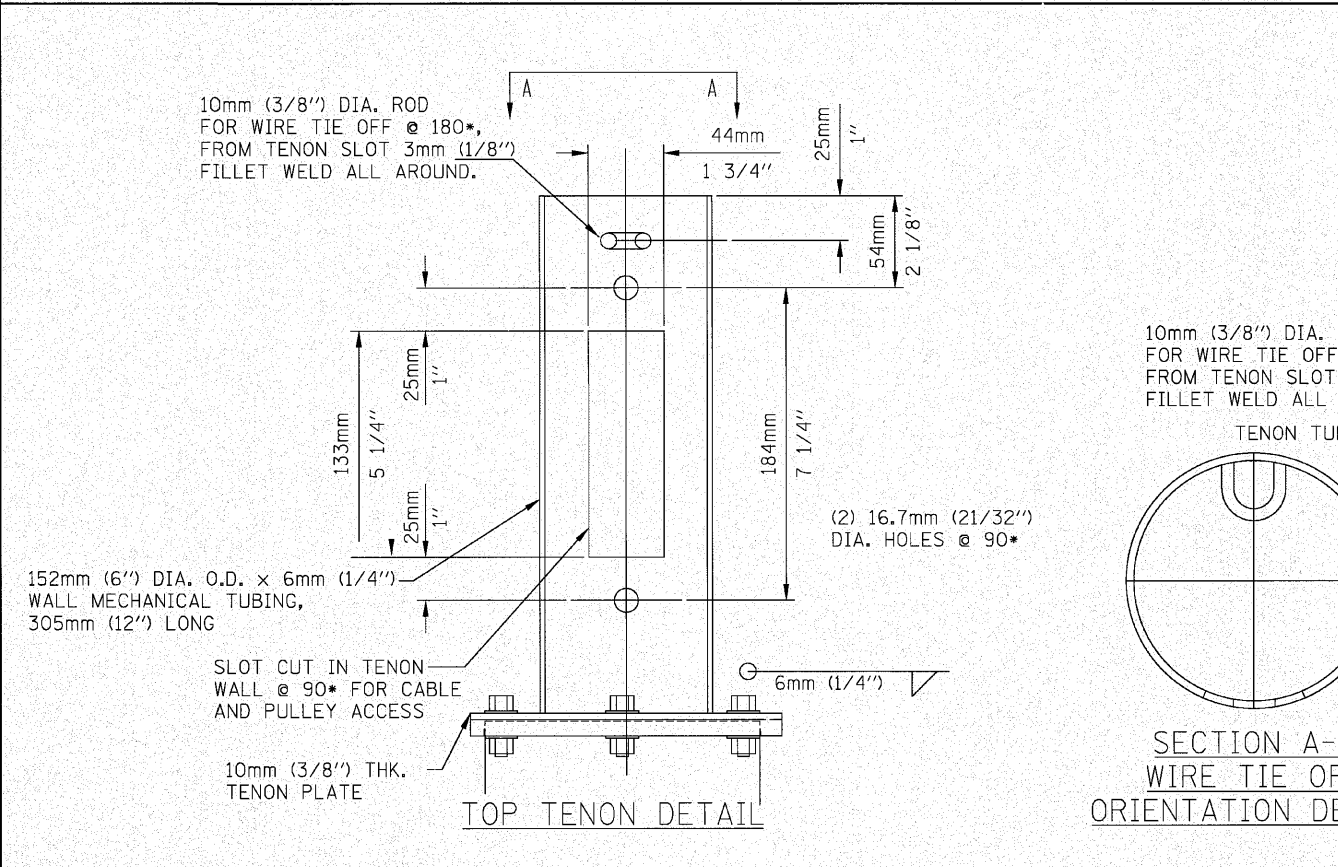
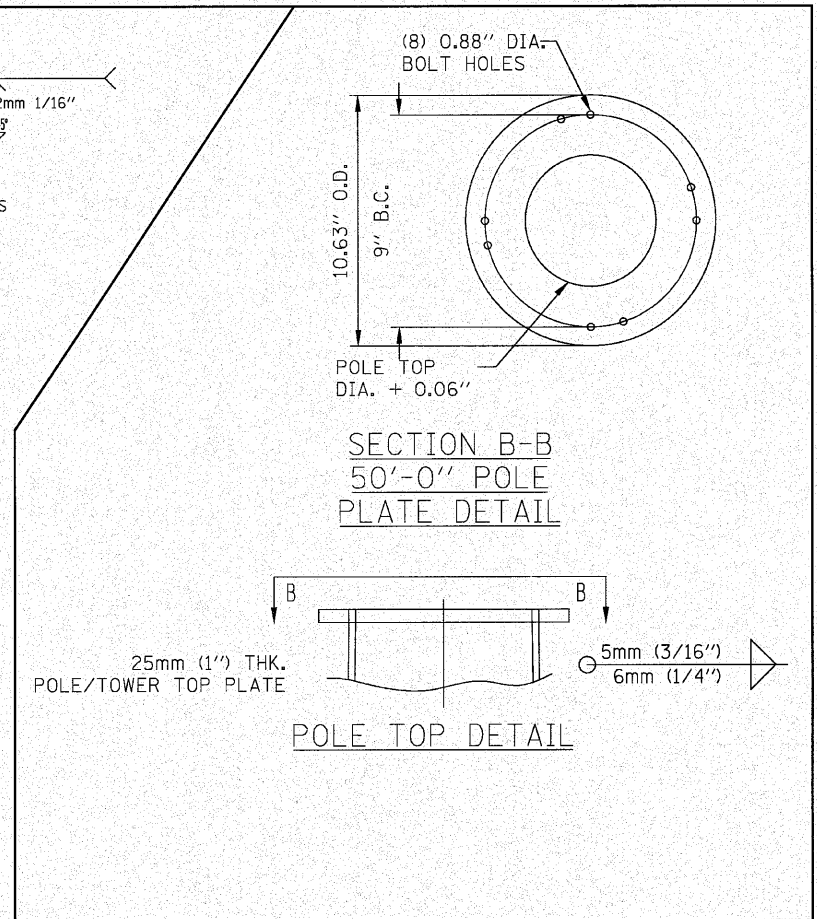
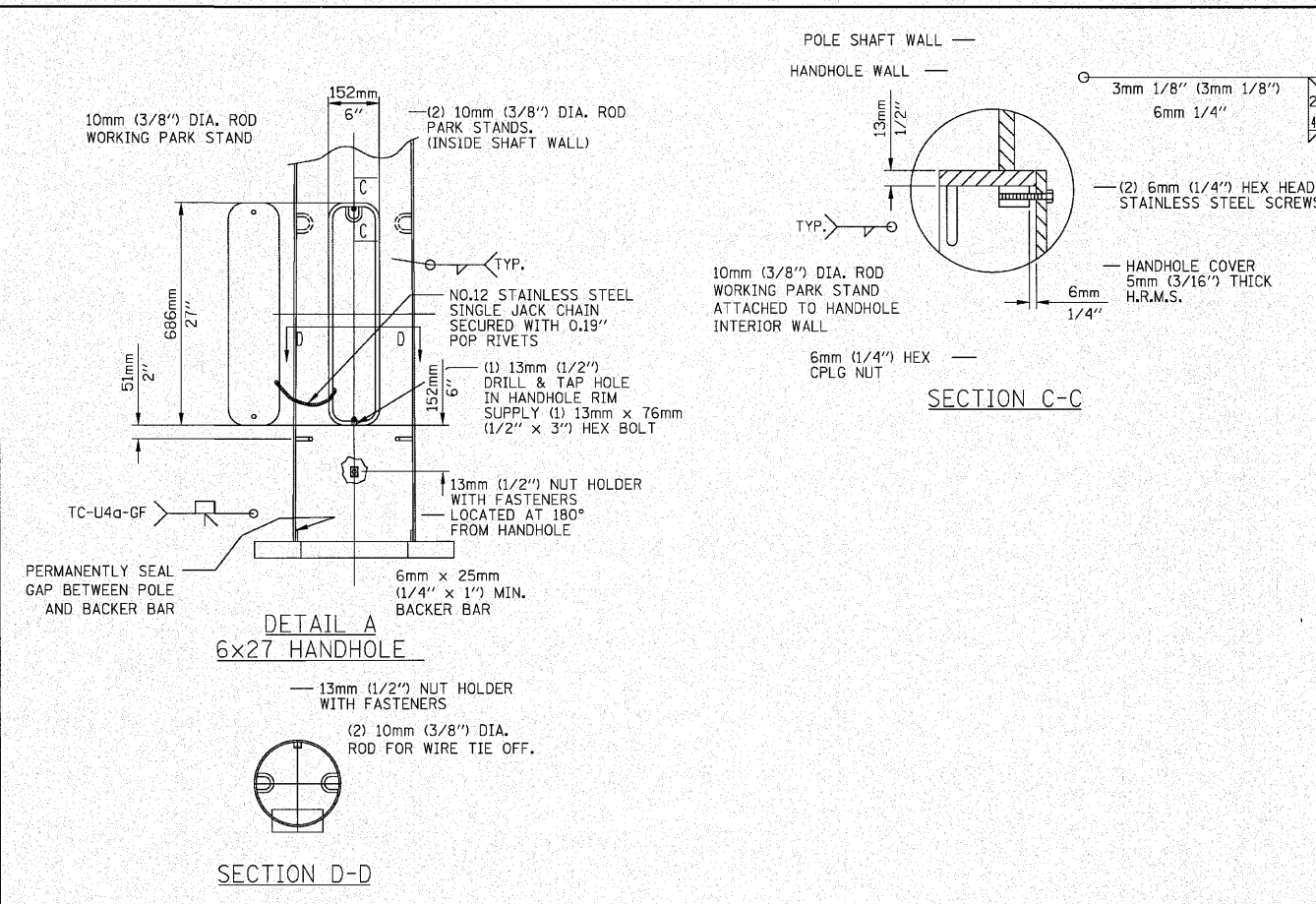
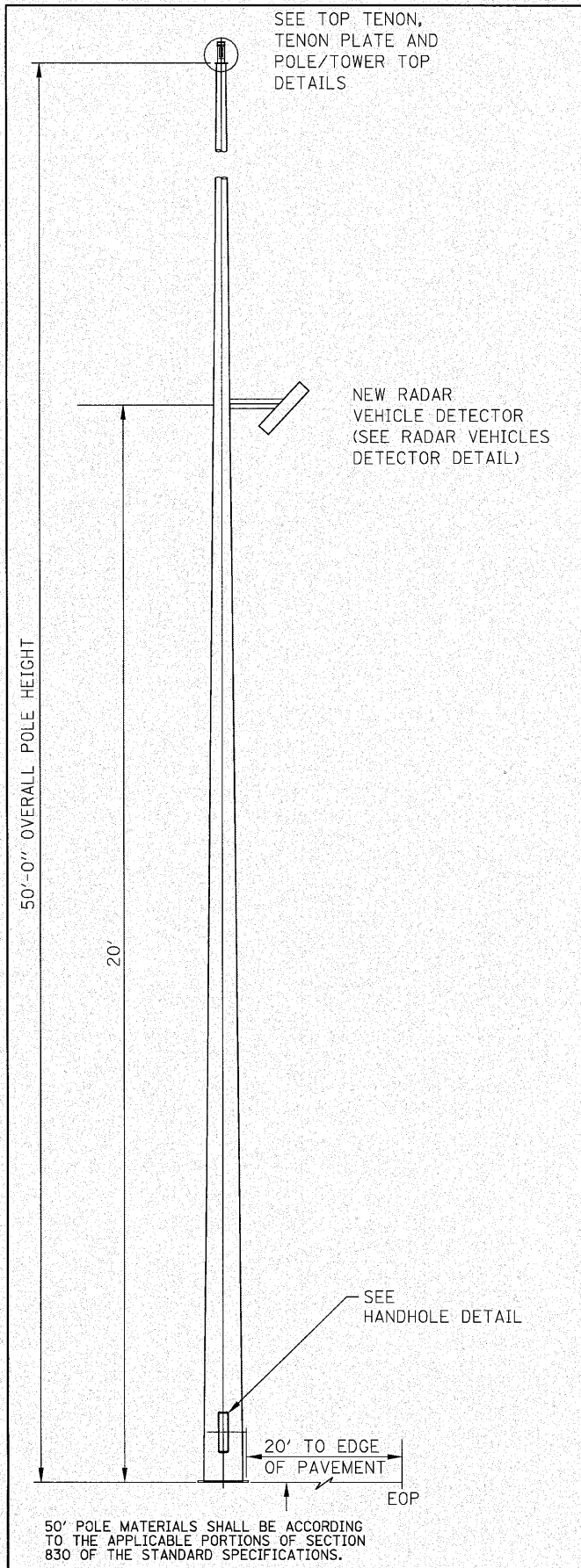
LEGEND

ALUM	ALUMINUM
EP	EDGE OF PAVEMENT
TW SH	TWISTED SHIELDED
PWR CBL	POWER CABLE
F.O.	FIBER OPTIC
J.B.	JUNCTION BOX
GSC	GALVANIZED STEEL CONDUIT
PVC	POLYVINYL CHLORIDE CONDUIT
FGC	FIBER GLASS CONDUIT
	EXISTING HANDHOLE
	EXISTING DOUBLE HANDHOLE
	EXISTING CONTROLLER
	EXISTING SERVICE INSTALLATION
	EXISTING GALVANIZED STEEL CONDUIT
	EXISTING JUNCTION BOX
	EXISTING SIGN TRUSS
	EXISTING HIGHWAY LIGHTING UNIT
	EXISTING UNDERGROUND LIGHTING CABLES
	PROPOSED HANDHOLE
	PROPOSED DOUBLE HANDHOLE
	PROPOSED CONTROLLER
	PROPOSED CONDUIT: "T" TRENCH, "P" PUSH "ATS" ATTACHED TO STRUCTURE, SIZE SPECIFIED
	PROPOSED SERVICE INSTALLATION
	PROPOSED CCTV CAMERA
	PROPOSED JUNCTION BOX, SIZE SPECIFIED
	PROPOSED LIGHT POLE, SIZE SPECIFIED
	PROPOSED RADAR VEHICLE DETECTOR

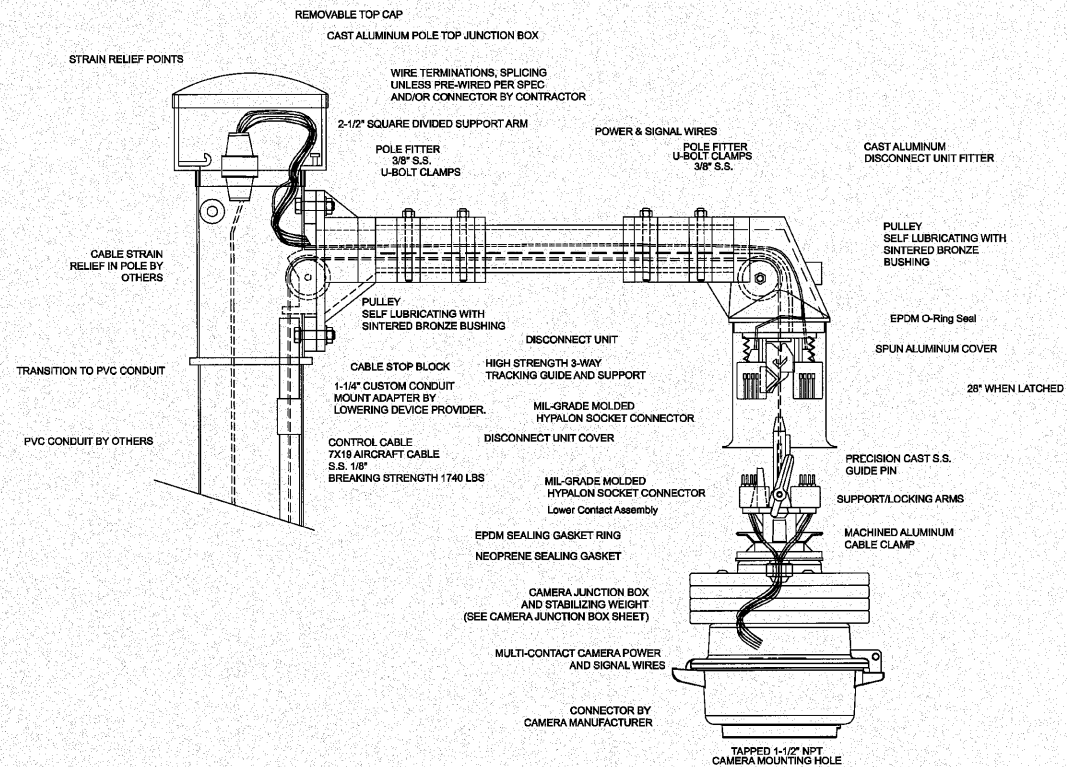
GENERAL NOTES

1. PROPOSED EQUIPMENT LOCATIONS ARE LOCATION SENSITIVE AND ARE APPROXIMATE TO ENSURE THE OPTIMUM FIELD OF VIEW. ACTUAL LOCATIONS SHALL BE DETERMINED IN THE FIELD, PER THE MANUFACTURER REPRESENTATIVES' RECOMMENDATIONS AND THE ENGINEER'S APPROVAL. LINDA LEONARD OF THE BUREAU OF OPERATIONS SHALL BE CONTACTED FOR ACTUAL CAMERA LOCATION VERIFICATION.
2. ALL MATERIALS SUPPLIED SHALL CONFORM TO SECTION 106 OF THE STANDARD SPECIFICATIONS FOR CONTROL OF MATERIALS.
3. THE CONTROLLER CABINETS AND JUNCTION BOXES SHALL BE UNPAINTED ALUMINUM SHEET METAL UNLESS OTHERWISE SPECIFIED ON THE PLANS.
4. UNDERGROUND CABLE MARKING TAPE SHALL BE INSTALLED WITH ALL TRENCH AND BACKFILL FOR ELECTRICAL WORK IN ACCORDANCE WITH ARTICLES 819.05 AND 1066.05 OF THE STANDARD SPECIFICATIONS.
5. THE CONTRACTOR SHALL NOT DRILL ANY HOLES IN THE BEAMS, DECK, OR SUBSTRUCTURE OF THE BRIDGE, UNLESS APPROVED BY THE ENGINEER.
6. ALL GROUND RODS SUPPLIED FOR THIS PROJECT SHALL BE IN ACCORDANCE WITH ARTICLE 1087.01 . ALL CONNECTIONS TO GROUND RODS SHALL BE MADE VIA EXOTHERMIC WELD, COMPRESSION CLAMPS WILL NOT BE ALLOWED.
7. COORDINATION WITH THE DEPARTMENT'S BUREAU OF OPERATIONS IS REQUIRED BEFORE ANY TRENCHING SHALL BE DONE TO LOCATE HIGHWAY LIGHTING/PUMP STATION/ITS FACILITIES AND TO COORDINATE OTHER FIELD ACTIVITIES.
8. BENDING RADIUS OF FIBER OPTIC CABLE SHALL NOT BE LESS THAN SIX (6) INCHES.
9. NO OVERNIGHT LANE CLOSURES SHALL BE PERMITTED ON THIS PROJECT.
10. ALL HANDHOLES SHALL BE CONSTRUCTED OF PORTLAND CEMENT CONCRETE PER SECTION 814 OF THE STANDARD SPECIFICATIONS. THE LEGEND ON THE COVER SHALL BE "ITS". SLOPE HANDHOLE TO MATCH FINAL GRADE ELEVATION.
11. ALL UTILITIES AND DRAINAGE STRUCTURES SHALL BE LOCATED IN THE FIELD PRIOR TO ANY ATTEMPT TO CONSTRUCT ANY COMPONENT OF THE VARIOUS ITS EQUIPMENT SYSTEMS. THE COST FOR LOCATING DRAINAGE STRUCTURES SHALL BE INCLUDED IN THE CONTRACT UNIT PRICE FOR TRENCH AND BACKFILL FOR ELECTRICAL WORK (SEE INLET AND PIPE PROTECTION SCHEDULE).
12. ILLINOIS STATE LAW REQUIRES A 48-HOUR NOTICE BE GIVEN TO UTILITIES BEFORE DIGGING. FIELD MARKING OF FACILITIES MAY BE OBTAINED BY CONTACTING J.U.L.I.E. OR FOR NON-MEMBERS, THE UTILITY COMPANY DIRECTLY.
 AGENCIES KNOWN TO HAVE FACILITIES WITHIN THE PROJECT AREA ARE AS FOLLOWS:
 - AMEREN (ELECTRIC)
 - AMERENIP (ELECTRIC & GAS)
 - AT&T ILLINOIS (COMMUNICATION)
 - BUCKEYE PARTNERS, L.P. (PIPELINE)
 - CENTERPOINT ENERGY (PIPELINE)
 - CHARTER COMMUNICATIONS, INC. (CABLE TV)
 - CITY OF EDWARDSVILLE (SANITARY SEWER & WATER)
 - EXPLORER PIPELINE COMPANY (PIPELINE)
 - CITY OF GRANITE CITY (SANITARY SEWER)
 - ILLINOIS AMERICAN WATER COMPANY (WATER)
 - VERIZON BUSINESS (COMMUNICATIONS)
 - MADISON COUNTY SPECIALSERVICE AREA #1 (SANITARY SEWER)
 - MITCHELL PUBLIC WATER DISTRICT (WATER)
 - PONTOON BEACH PUBLIC WATER DISTRICT (WATER)
 - SPRINT/NEXTEL (COMMUNICATIONS)
 - LEVEL 3 COMMUNICATIONS (COMMUNICATIONS)
 - 36ONETWORKS(USA) INC. (COMMUNICATIONS)
 (MEMBER OF J.U.L.I.E. (800-892-0123) ARE INDICATED BY "•". NON J.U.L.I.E. MEMBERS MUST BE NOTIFIED INDIVIDUALLY.)
13. A 9-1-1 ADDRESS MUST BE OBTAINED FROM THE MADISON COUNTY 9-1-1 COORDINATOR PRIOR TO OBTAINING ELECTRIC/ TELEPHONE SERVICE AT THE PROJECT LOCATIONS. THE CONTRACTOR SHALL NOTIFY THE RESIDENT ENGINEER/TECHNICIAN A MINIMUM OF SIX WEEKS IN ADVANCE OF THE ANTICIPATED DATE THAT ELECTRIC/TELEPHONE SERVICE WILL BE REQUIRED IN ORDER THAT THE NECESSARY ADDRESS CAN BE OBTAINED. IF THERE ARE ANY QUESTIONS REGARDING THE ABOVE, CONTACT THE 9-1-1 COORDINATOR AT 618-692-7040, EXT. 5911 FOR MADISON COUNTY.
14. ALL FIBER BACKBONE CONDUIT SHALL BE PLACED A MINIMUM OF 5' FROM EDGE OF PAVEMENT. FINAL LOCATION SHALL BE APPROVED BY THE ENGINEER.
15. THE CONTRACTOR SHALL BE REQUIRED TO PERFORM FIELD MEASUREMENTS TO VERIFY DIMENSIONS OF EXISTING STRUCTURES PRIOR TO ORDERING MOUNTING HARDWARE.
16. FIBER OPTIC CABLE PULL TENSION WILL BE LIMITED BY PROVIDING JUNCTION BOXES OR HANDHOLES AT INTERVALS NO GREATER THAN 750 FEET.
17. THE SERVICE INSTALLATION TYPE A WOOD POLE SHALL BE PROVIDED PER SECTION 805. ELECTRICAL INSTALLATION-TRAFFIC SIGNALS OF THE SUPPLEMENTARY SPECIFICATIONS AND RECURRING SPECIAL PROVISIONS.

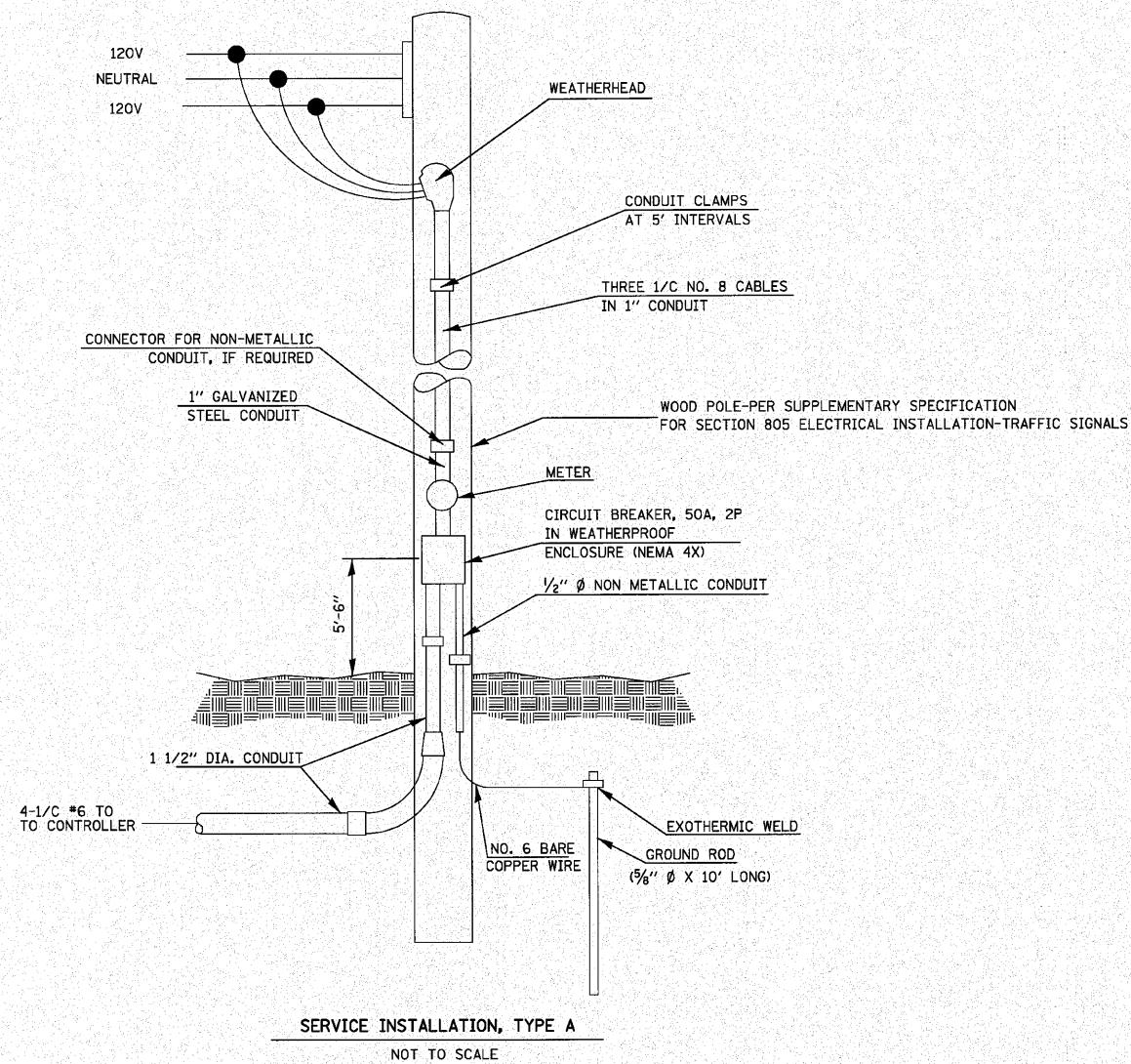
FILE NAME =	USER NAME = prestonme	DESIGNED -	REVISED -	STATE OF ILLINOIS DEPARTMENT OF TRANSPORTATION	LEGEND AND GENERAL NOTES	F.A.T. RTE.	SECTION	COUNTY	TOTAL SHEETS	SHEET NO.
at:\pw\work\p\dot\prestonme\d2134173\d878d29-shit-ITS-plenudgn	DRAWN -	REVISED -	270			DIST D8 ITS 2011-1	MADISON	17	4	
PLOT SCALE = 1/8"=200' / IN.	CHECKED -	REVISED -	CONTRACT NO. T6D09							
PLOT DATE = 11/24/2010	DATE -	REVISED -	SCALE: _____			SHEET NO. ___ OF ___ SHEETS	STA. _____ TO STA. _____	FED. ROAD DIST. NO. - ILLINOIS FED. AID PROJECT		



FILE NAME =	USER NAME = prestonme	DESIGNED -	REVISED -	STATE OF ILLINOIS DEPARTMENT OF TRANSPORTATION	POLE MOUNTED CCTV DETAIL WITH CAMERA LOWERING DEVICE 1 OF 2	F.A.I. RTE.	SECTION	COUNTY	TOTAL SHEETS	SHEET NO.
of:\pwr\work\pilot\prestonme\d2134173\d86d09-sh-ITS-plan.dgn	DRAWN -	REVISED -	270			DIST D8 ITS 2011-1	MADISON	17	6	
PLOT SCALE = 100.0000 / IN.	CHECKED -	REVISED -	CONTRACT NO. 76D09							
PLOT DATE = 11/24/2010	DATE -	REVISED -	FED. ROAD DIST. NO. - ILLINOIS FED. AID PROJECT							

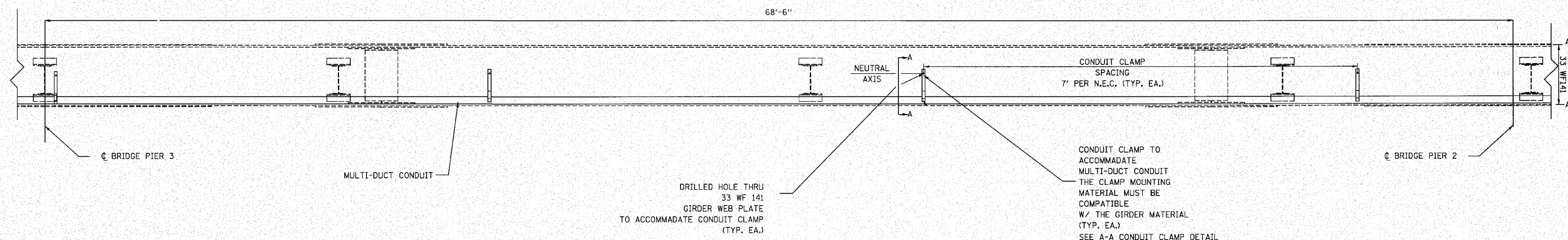


CAMERA LOWERING DEVICE FOR POLE MOUNTING MULTI-FUNCTION SURVEILLANCE CAMERAS

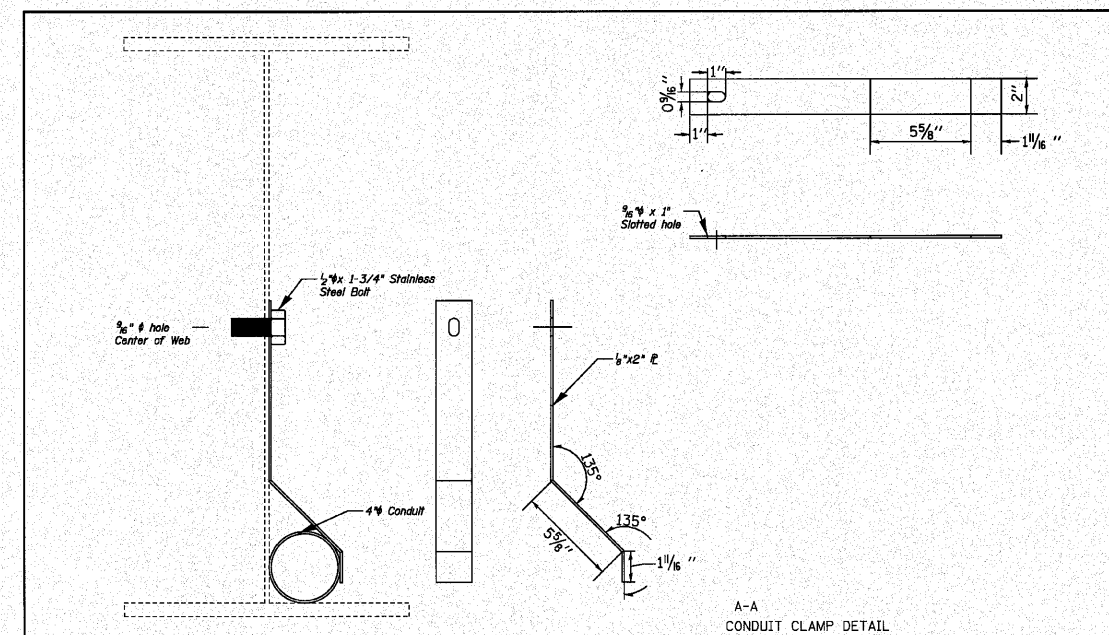


FILE NAME =	USER NAME = prestonme	DESIGNED -	REVISED -	STATE OF ILLINOIS DEPARTMENT OF TRANSPORTATION	POLE MOUNTED CCTV DETAIL WITH CAMERA LOWERING DEVICE 2 OF 2 AND SERVICE INSTALLATION DETAILS	F.A.I. RTE.	SECTION	COUNTY	TOTAL SHEETS	SHEET NO.
at\pwork\p\dot\prestonme\08134173\d8	EdB91-shr-ITS-plan.dgn	DRAWN -	REVISED -			270	DIST D8 ITS 2011-1	MADISON	17	7
PLOT SCALE = 1/8" = 1' IN.	CHECKED -	REVISED -	REVISED -			CONTRACT NO. 76D09				
PLOT DATE = 11/24/2010	DATE -	REVISED -	REVISED -			FED. ROAD DIST. NO. - ILLINOIS FED. AID PROJECT				

NOTE: ATTACH FLEXIBLE MULTI-DUCT CONDUIT TO AND FROM THIS ATTACHED CONDUIT PER THE "CONDUIT ATTACHED TO STRUCTURE, 4" DIA., PVC, TYPE C" SPECIAL PROVISION



CONDUIT ATTACHED TO STRUCTURE
OVER RAILROAD AT STA.256+81.57 (SECTION 60-2VHB)
BETWEEN PIER 2 AND PIER 3



A-A
CONDUIT CLAMP DETAIL

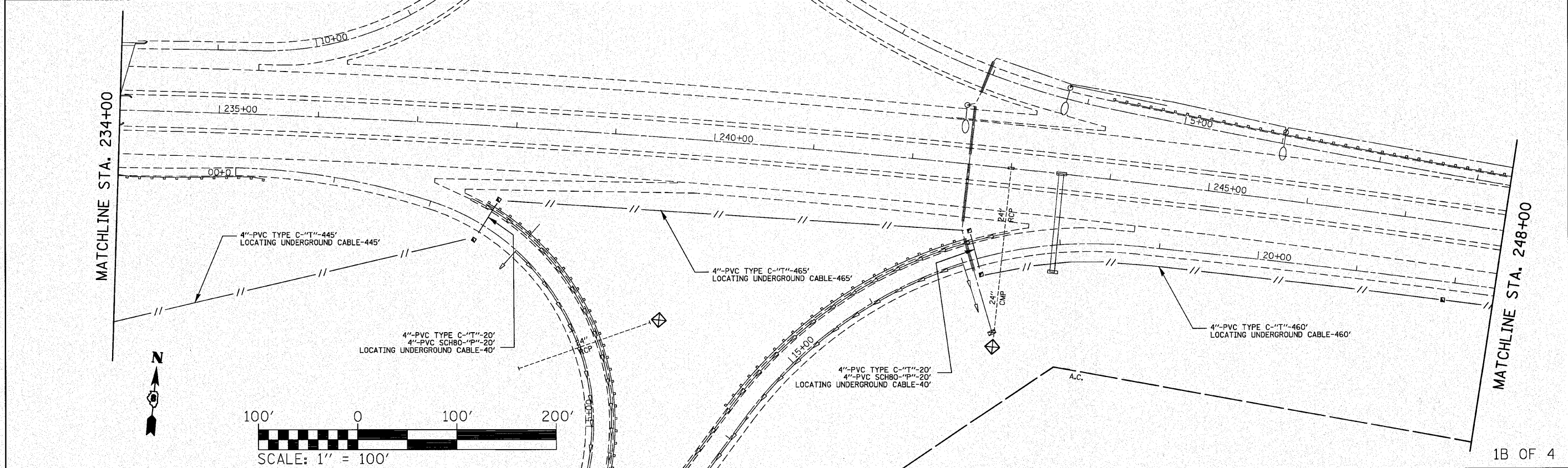
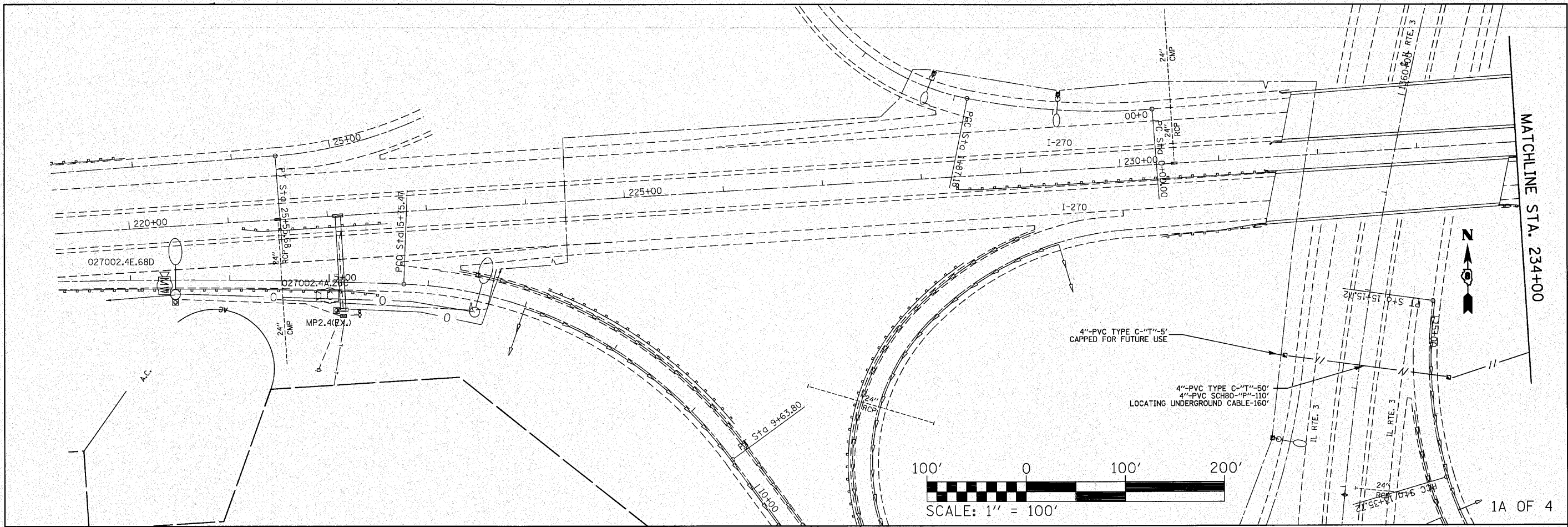
FILE NAME =	USER NAME = prestonm	DESIGNED -	REVISED -
ca:\pwork\pwork\prestonm\2134173\d878d29-abt-ITS-plen.dgn		DRAWN -	REVISED -
	PLOT SCALE = 100.0000 / IN.	CHECKED -	REVISED -
	PLOT DATE = 11/24/2010	DATE -	REVISED -

STATE OF ILLINOIS
DEPARTMENT OF TRANSPORTATION

MULTI-DUCT CONDUIT INSTALLATION
OVER RAILROAD TRACKS

SCALE: SHEET NO. OF SHEETS STA. TO STA.

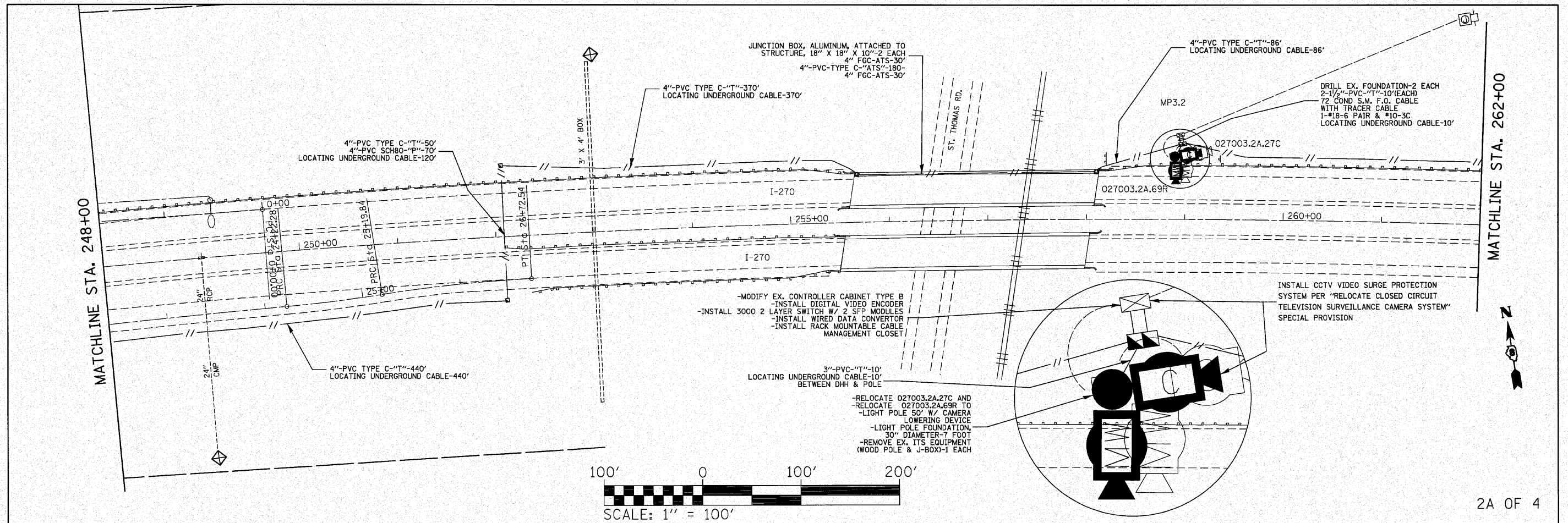
F.A.T. RTE.	SECTION	COUNTY	TOTAL SHEETS	SHEET NO.
270	DIST 8 ITS 2011-1	MADISON	17	8
CONTRACT NO. 76D09				
FED. ROAD DIST. NO. ILLINOIS FED. AID PROJECT				



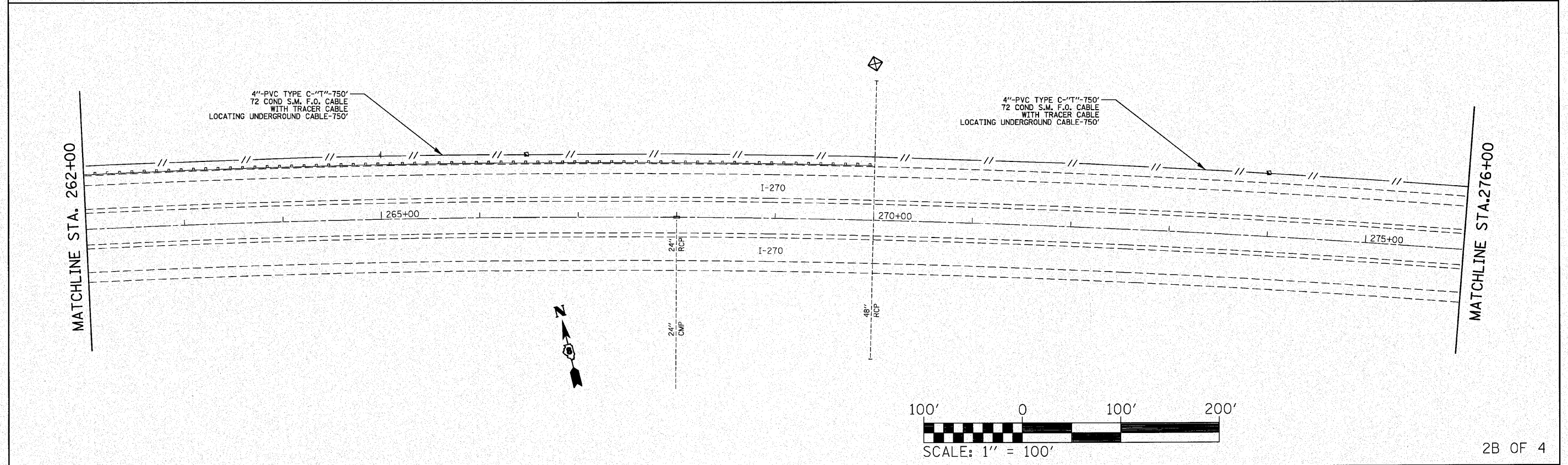
FILE NAME = c:\pw_work\p1\dot\prestonme\20134173\d8\6d99\sh-t-ITS-plan.dgn	USER NAME = prestonme	DESIGNED - ---	REVISED - ---
	PLOT SCALE = 100.0000 / IN.	CHECKED - ---	REVISED - ---
	PLOT DATE = 11/24/2010	DATE - ---	REVISED - ---
	STATE OF ILLINOIS DEPARTMENT OF TRANSPORTATION		

ITS PLAN 1A & 1B OF 4	
SCALE: _____	SHEET NO. ___ OF ___ SHEETS
STA. 213+75 TO STA. 248+00	

F.A.I. RTE. 270	SECTION DIST D8 ITS 2011-1	COUNTY MADISON	TOTAL SHEETS 17	SHEET NO. 9
CONTRACT NO. 76009				
FED. ROAD DIST. NO. - ILLINOIS FED. AID PROJECT				

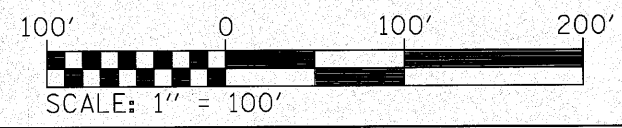
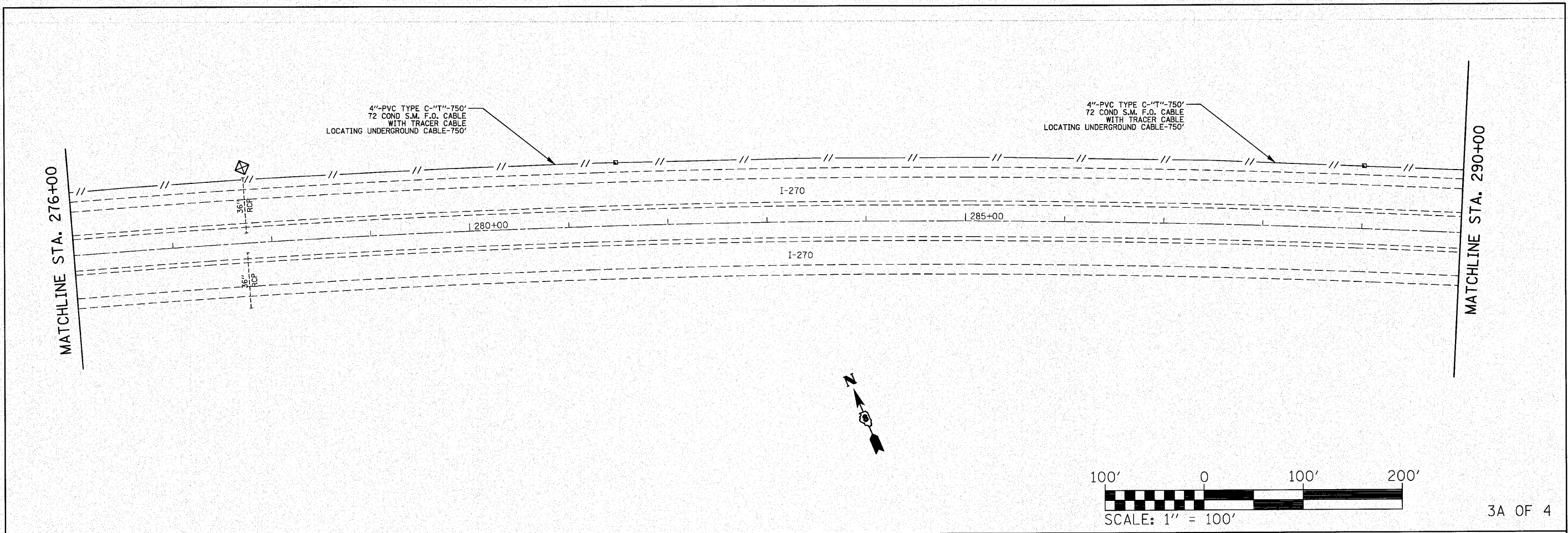


2A OF 4

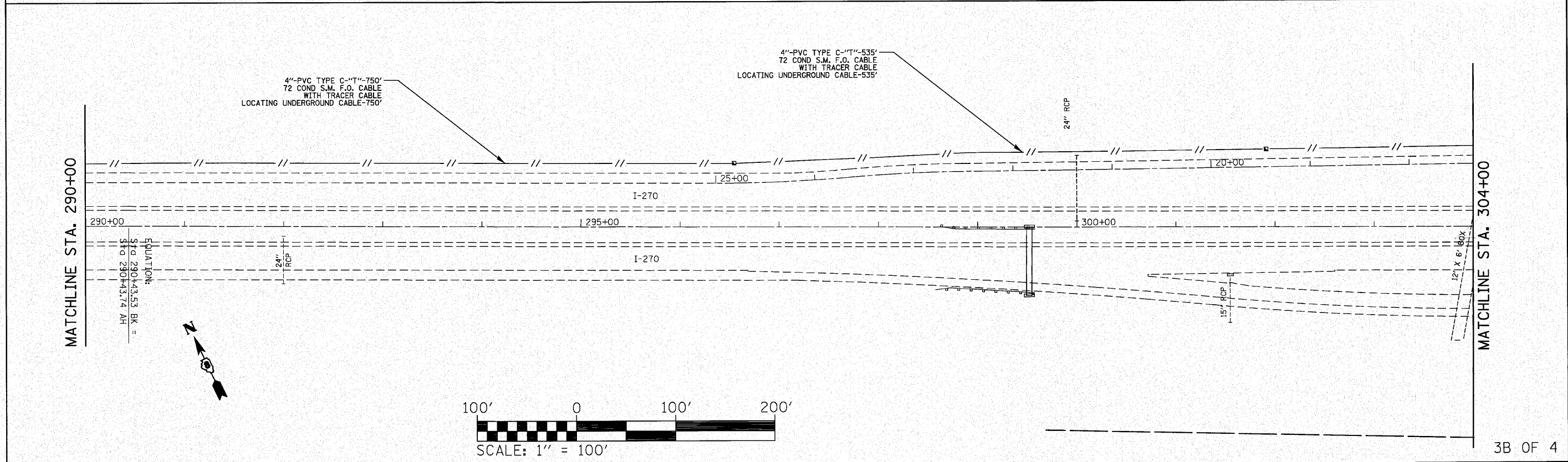


2B OF 4

FILE NAME =	USER NAME = prestonm	DESIGNED -	REVISD -	STATE OF ILLINOIS DEPARTMENT OF TRANSPORTATION	ITS PLAN 2A & 2B OF 4			F.A.I. RTE.	SECTION	COUNTY	TOTAL SHEETS	SHEET NO.
c:\pwork\p\widet\prestonm\adl34173\d8	6d09-sh-t-ITS-plan.dgn	DRAWN -	REVISD -		270	DIST D8 ITS 2011-1	MADISON	17	10	CONTRACT NO. 76009		
	PLOT SCALE = 1/8\"/>											
	PLOT DATE = 11/24/2010	DATE -	REVISD -		SCALE: _____	SHEET NO. _____	OF _____ SHEETS	STA. 234+00 TO STA. 276+00	FED. ROAD DIST. NO. _____	ILLINOIS FED. AID PROJECT		

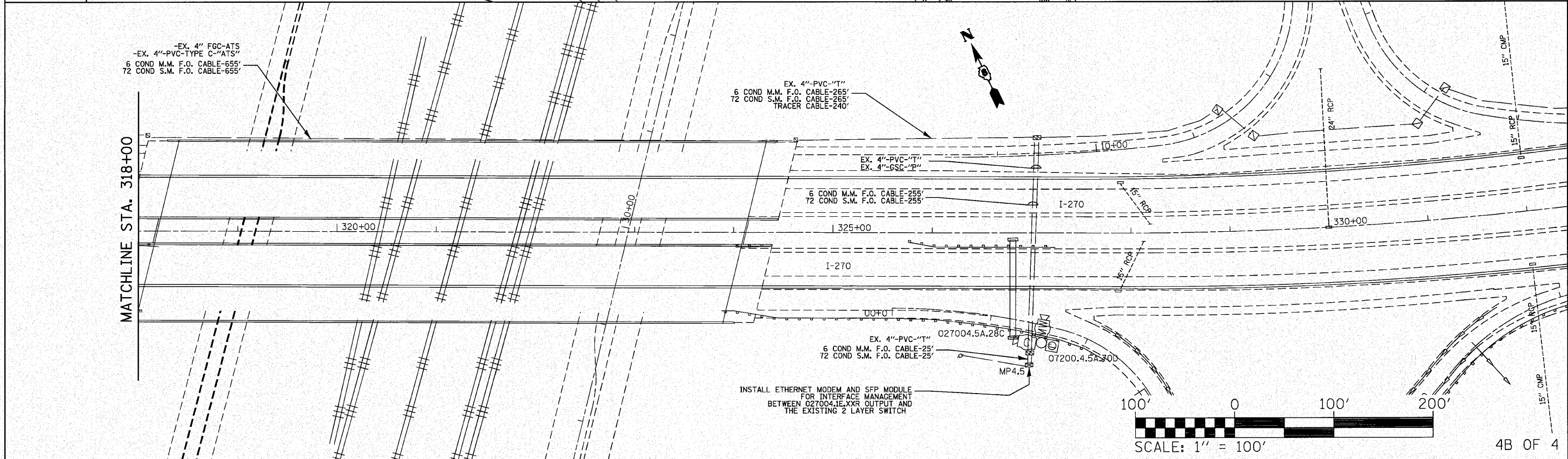
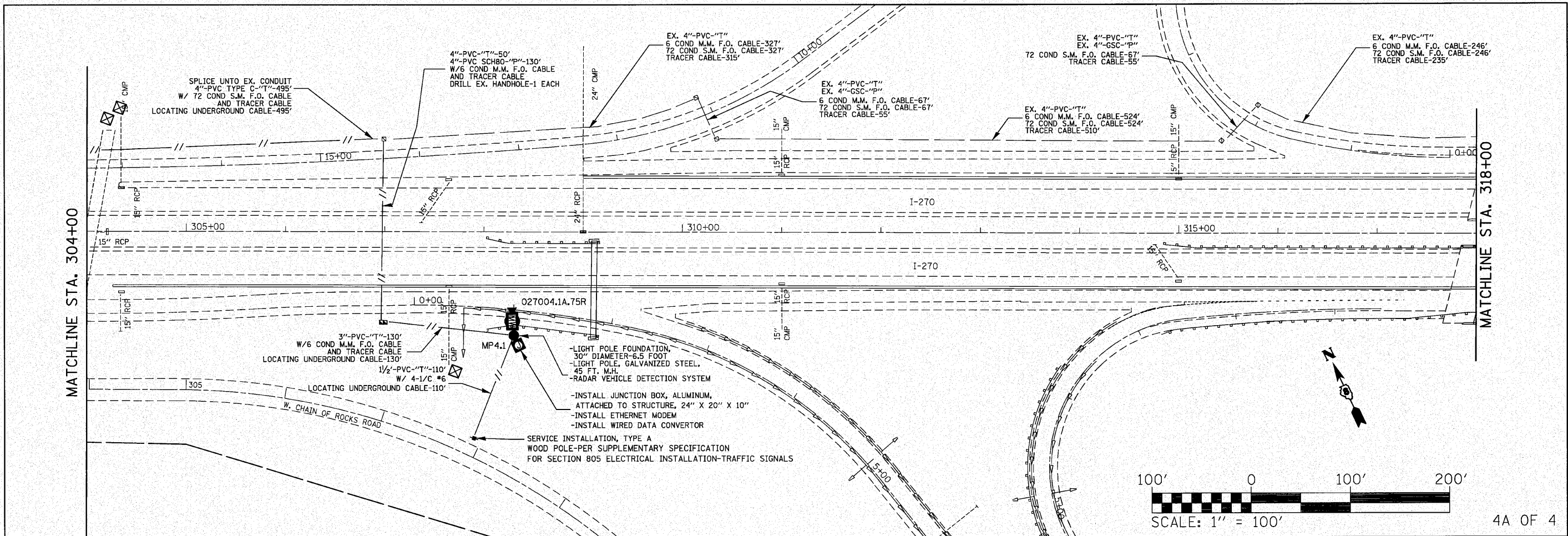


3A OF 4

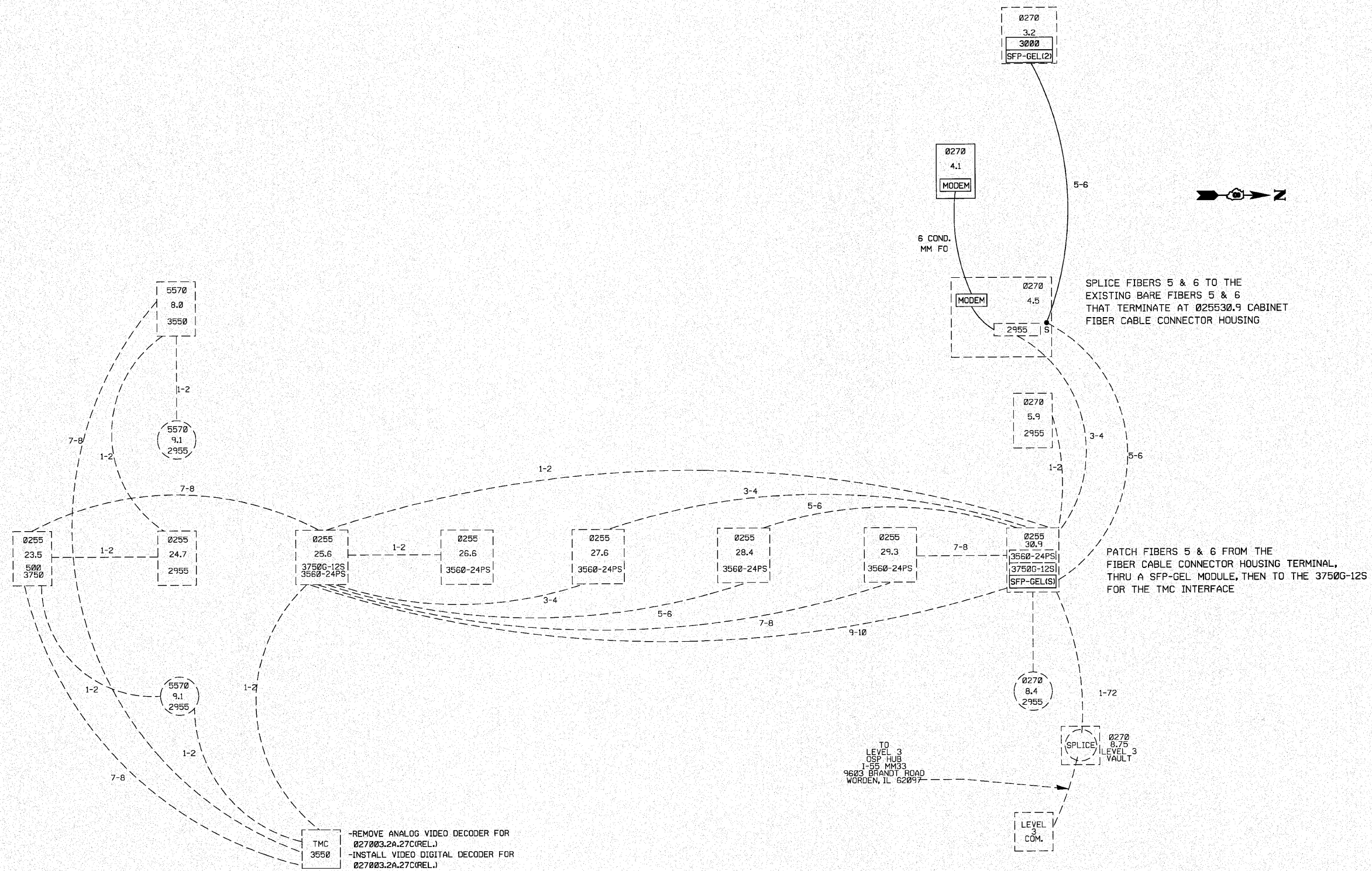


3B OF 4

FILE NAME =	USER NAME = prestonme	DESIGNED -	REVISED -	STATE OF ILLINOIS DEPARTMENT OF TRANSPORTATION	ITS PLAN 3A & 3B OF 4			F.A.T. RTE.	SECTION	COUNTY	TOTAL SHEETS	SHEET NO.
ca\pwork\pwork\prestonme\ad0134173\d876d09-shr-ITS-plan.dgn	DRAWN -	REVISED -	270					DIST DB ITS 2011-1	MADISON	17	11	
	PLOT SCALE = 100.0000' / IN.	CHECKED -	REVISED -		SCALE: _____ SHEET NO. ___ OF ___ SHEETS STA. 276+00 TO STA. 304+00			CONTRACT NO. 76D09				
	PLOT DATE = 11/24/2010	DATE -	REVISED -					FED. ROAD DIST. NO. - ILLINOIS FED. AID PROJECT				



FILE NAME =	USER NAME = prestonme	DESIGNED -	REVISED -	STATE OF ILLINOIS DEPARTMENT OF TRANSPORTATION	ITS PLAN 4A & 4B OF 4	F.A.I. RTE.	SECTION	COUNTY	TOTAL SHEETS	SHEET NO.	
o:\p\work\p\dot\prestonme\d0134173\d8	6d07-ah1-ITS-plan.dgn	DRAWN -	REVISED -			270	DIST D8 ITS 2011-1	MADISON	17	12	
	PLOT SCALE = 1/8" = 1' IN.	CHECKED -	REVISED -			SCALE: _____ SHEET NO. ___ OF ___ SHEETS STA. 304+00 TO STA. 332+00		CONTRACT NO. 76D09			
	PLOT DATE = 11/24/2010	DATE -	REVISED -			FED. ROAD DIST. NO. - ILLINOIS FED. AID PROJECT					



FILE NAME =	USER NAME = prestonme	DESIGNED -	REVISED -
ca\pwork\pwidot\prestonme\08134173\d8	6d09-shc-ITS-plan.dgn	DRAWN -	REVISED -
	PLOT SCALE = 100.0000 / IN.	CHECKED -	REVISED -
	PLOT DATE = 11/24/2010	DATE -	REVISED -

**STATE OF ILLINOIS
DEPARTMENT OF TRANSPORTATION**

COMMUNICATION SYSTEM COVER SHEET

SCALE: _____ SHEET NO. ____ OF ____ SHEETS STA. _____ TO STA. _____

F.A.I. RTE.	SECTION	COUNTY	TOTAL SHEETS	SHEET NO.
270	DIST D8 ITS 2011-1	MADISON	17	13
CONTRACT NO. 76D09				
FED. ROAD DIST. NO. _____ ILLINOIS FED. AID PROJECT				

LOCATION (FIBERS ON WEST SIDE)

FIBER	027004.5	027004.1	027003.2	027002.4
1-2	S		-B-	
3-4	T		-B-	
5-6	S		T	
7-8	S		-B-	
9-10	S		-B-	
11-12	S		-B-	
13-14	S		-B-	
15-16	T		-B-	
17-18	S		T	
19-20	S		-B-	
21-22	S		-B-	
23-24	S		-B-	
25-26	S		-B-	
27-28	S		-B-	
29-30	S		-B-	
31-32	S		-B-	
33-34	S		-B-	
35-36	S		-B-	
37-72	S		-B-	

LOCATION (FIBERS ON EAST SIDE)

FIBER	027002.4	027003.2	027004.1	027004.5
1-2		-B-		S
3-4		T		E
5-6		-B-		S
7-8		-B-		S
9-10		-B-		S
11-12		-B-		S
13-14		-B-		S
15-16		T		E
17-18		-B-		S
19-20		-B-		S
21-22		-B-		S
23-24		-B-		S
25-26		-B-		S
27-28		-B-		S
29-30		-B-		S
31-32		-B-		S
33-34		-B-		S
35-36		-B-		S
37-72		-B-		S

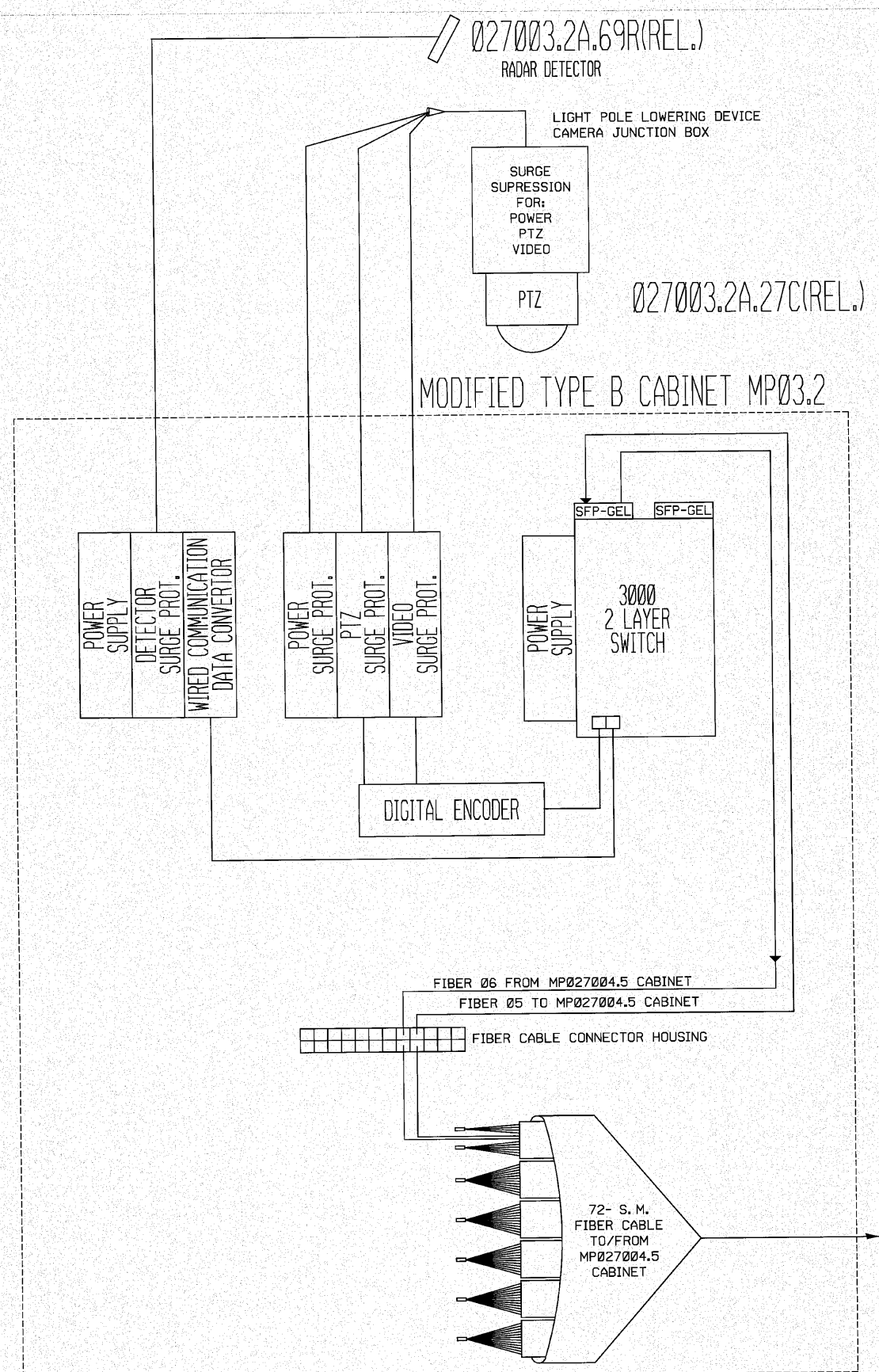
TOTAL SPLICES=136
TOTAL TERMINATIONS=12

T=TERMINATE
S=SPLICE FIBER
-UC=UNCUT FIBER RUN
-B=BARE (UNUSED)
E= EXISTING TERMINATED FIBER

LOCATION	LAYER 2 SWITCH	SFP MODULES*	WIRED COMMUNICATION DATA CONVERTOR	DIGITAL ENCODER	ETHERNET MODEM	DIGITAL DECODER
MP02702.4 (EX. LOC.)						
MP02703.2(EX. LOC.)	1	2	1	1		
MP02704.1 (PROP. LOC.)			1		1	
MP02704.5(EX. LOC.)					1	
MP025530.9(EX. LOC.)		2				
TMC						1
TOTALS:	1	4	2	1	2	1

SFP-GE-L = STANDARD FIBER SFP

FILE NAME =	USER NAME = prestonme	DESIGNED -	REVISD -	STATE OF ILLINOIS DEPARTMENT OF TRANSPORTATION	TERMINATION-SPLICE TOTALS & SWITCH SCHEDULE	F.A.I. RTE.	SECTION	COUNTY	TOTAL SHEETS	SHEET NO.
ca:\pwork\pwork\prestonme\0134173\0816d09-ehh-ITS-plan.dgn	DRAWN -	REVISD -	270			DIST D8 ITS 2011-1	MADISON	17	14	
PLOT SCALE = 100.0000 / IN.	CHECKED -	REVISD -	CONTRACT NO. 76D09							
PLOT DATE = 11/24/2010	DATE -	REVISD -	FED. ROAD DIST. NO. - ILLINOIS FED. AID PROJECT							
				SCALE: _____	SHEET NO. ___ OF ___ SHEETS	STA. _____ TO STA. _____				



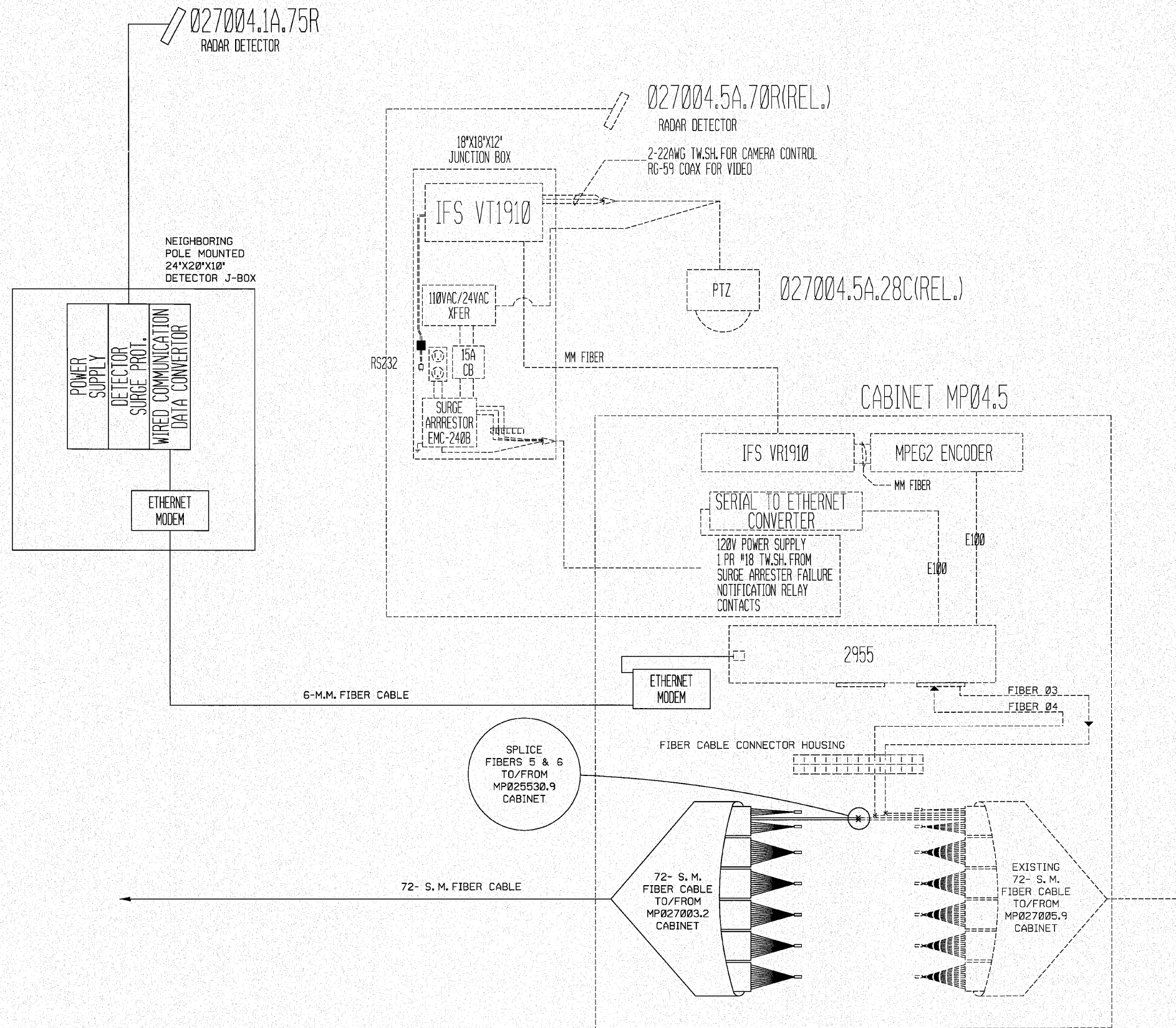
FILE NAME =	USER NAME = prestonme	DESIGNED -	REVISD -
ca:\pw_work\pw\dot\prestonme\d0134173\d876d09-shr-ITS-plan.dgn		DRAWN -	REVISD -
PLOT SCALE = 100.0000' / IN.		CHECKED -	REVISD -
PLOT DATE = 11/24/2010		DATE -	REVISD -

**STATE OF ILLINOIS
DEPARTMENT OF TRANSPORTATION**

**COMMUNICATION SHEET
MP027003.2 CABINET**

SCALE: _____ SHEET NO. _____ OF _____ SHEETS STA. _____ TO STA. _____

F.A.I. RTE.	SECTION	COUNTY	TOTAL SHEETS	SHEET NO.
270	DIST DB ITS 2011-1	MADISON	17	15
CONTRACT NO. 76D09				
FED. ROAD DIST. NO. - ILLINOIS FED. AID PROJECT				



FILE NAME =	USER NAME = prestonme	DESIGNED -	REVISED -
ca\pw\work\p1dot\prestonme\d0134173\d875d09-shr-ITS-plan.dgn		DRAWN -	REVISED -
PLOT SCALE = 100.0000 / IN.		CHECKED -	REVISED -
PLOT DATE = 11/24/2010		DATE -	REVISED -

**STATE OF ILLINOIS
DEPARTMENT OF TRANSPORTATION**

**COMMUNICATION SHEET
MP027004.1 CABINET TO MP027004.5 CABINET**

F.A.I. RTE.	SECTION	COUNTY	TOTAL SHEETS	SHEET NO.
270	DIST D8 ITS 2011-1	MADISON	17	16
FED. ROAD DIST. NO. - ILLINOIS FED. AID PROJECT			CONTRACT NO. 76D09	

SCALE: _____ SHEET NO. ___ OF ___ SHEETS STA. _____ TO STA. _____

