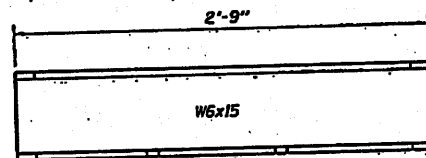
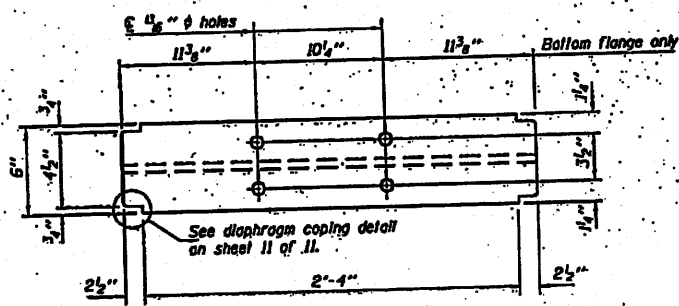


**SECTION H-H**

\* Measured at E of diaphragm.



**ELEVATION**

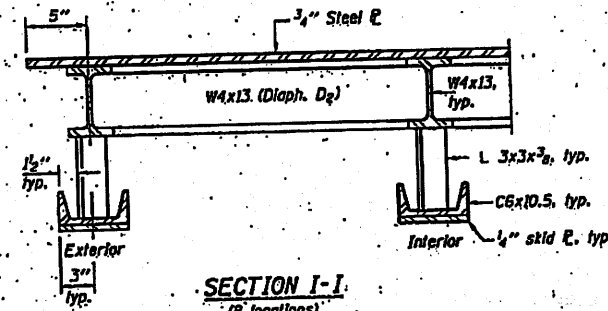


**PLAN**

(Bottom flange shown, top flange similar)

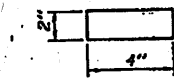
**DETAIL Z**

(8 locations)



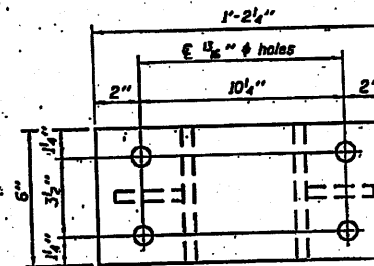
**SECTION I-I**

(8 locations)

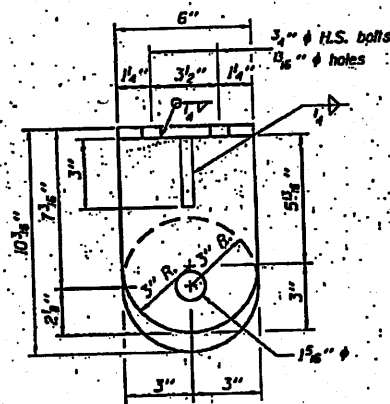


**SPACER E DETAIL**

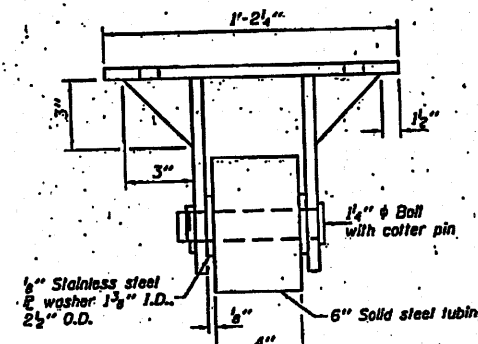
3/4" steel E  
(24 locations)



**PLAN**



**END VIEW**



**ELEVATION**

**ROLLER BRACKET ASSEMBLY**

(8 required)  
(All plates are 1/2" unless otherwise noted.)

Notes: All plates for the roller bracket shall be galvanized.

DESIGNED - RAY ANANICH  
CHECKED - CLYD M. EVOY  
DRAWN - H.T. BUDING  
CHECKED - G.R.A. / C.M.E.

EXAMINED  
PASSED

THOMAS J. DOMANALSKI  
ENGINEER OF BRIDGE DESIGN  
RICHARD W. BISHOP  
ENGINEER OF BRIDGE AND STRUCTURES

DATE

STATE OF ILLINOIS  
DEPARTMENT OF TRANSPORTATION

CROSS FRAME DETAILS  
(BRUSSELS FERRY)

SHEET NO. 7 OF 11 SHEETS

F.A.P. RTE.	SECTION	COUNTY	TOTAL SHEETS	SHEET NO.
304	21-4	JERSEY	304	17
			CONTRACT NO. 76E55	
ILLINOIS/PA. AND PROJECT				