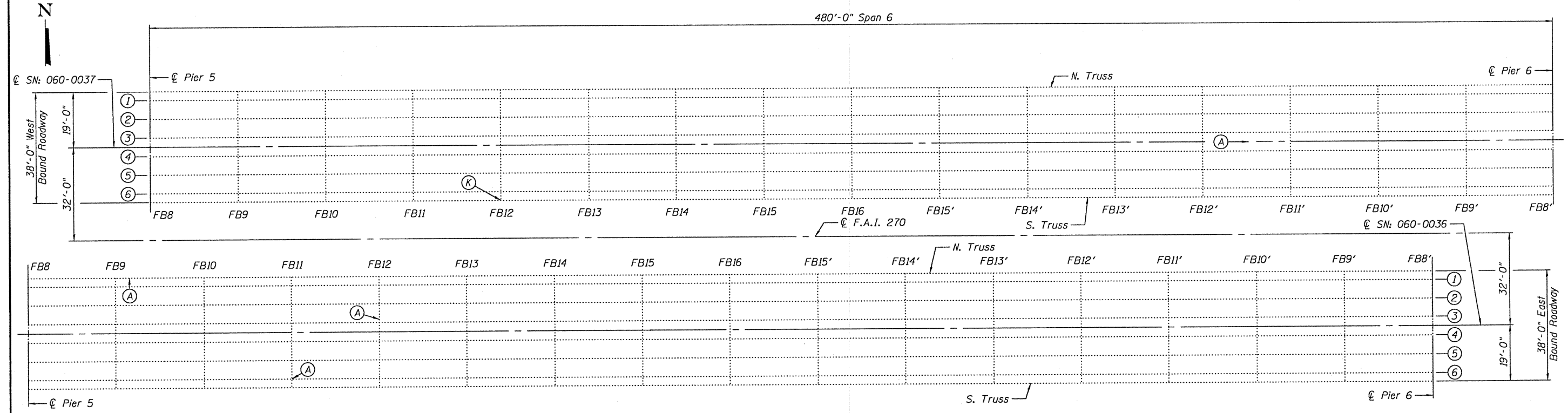
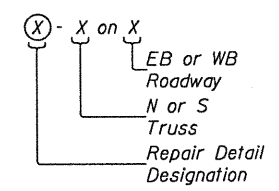


PARTIAL TRUSS ELEVATION

Low Water
Elev. ±397.0

**REPAIR LOCATION
LEGEND**



PARTIAL PLAN

DESIGNED - A.T.H.	EXAMINED - <i>Carl Provey</i>	DATE - NOVEMBER 22, 2010	STATE OF ILLINOIS DEPARTMENT OF TRANSPORTATION	DETAILS		F.A.I. RTE. 270	SECTION 60-1B-I-4	COUNTY Madison	TOTAL SHEETS 9	SHEET NO. 5
CHECKED - M.K.C.	PASSED - <i>Ralph E. Anderson</i>			SN 060-0036 & 0037				CONTRACT NO. 76E58		
DRAWN - Drew Christopher				SHEET NO. 2 OF 6 SHEETS		ILLINOIS FED. AID PROJECT				
CHECKED - A.T.H. M.K.C.										

SLT-98-001-10