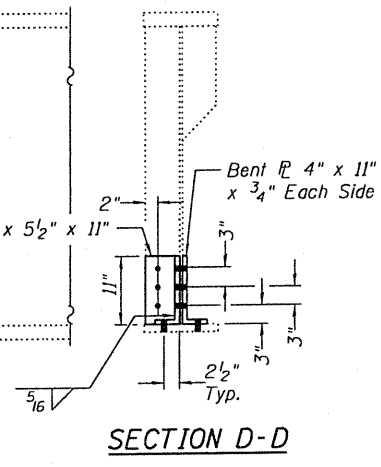
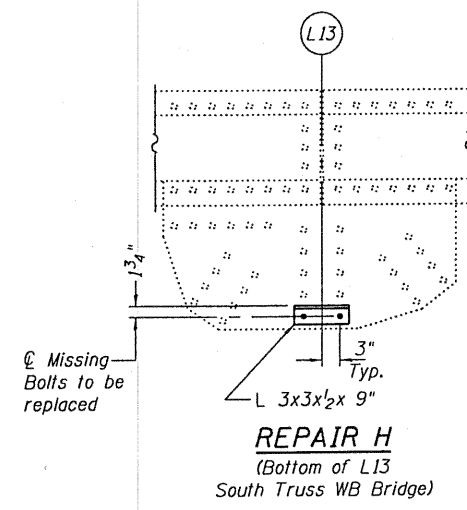


REPAIR G
(FBO at Pier 4)



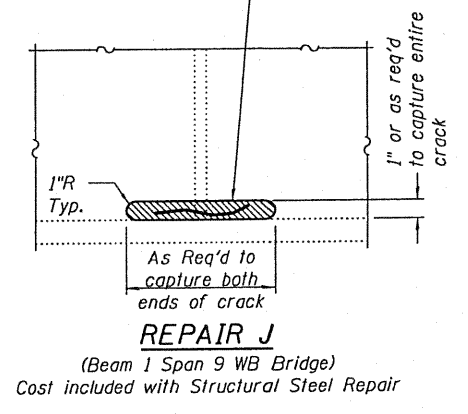
SECTION D-D



REPAIR H
(Bottom of L13
South Truss WB Bridge)

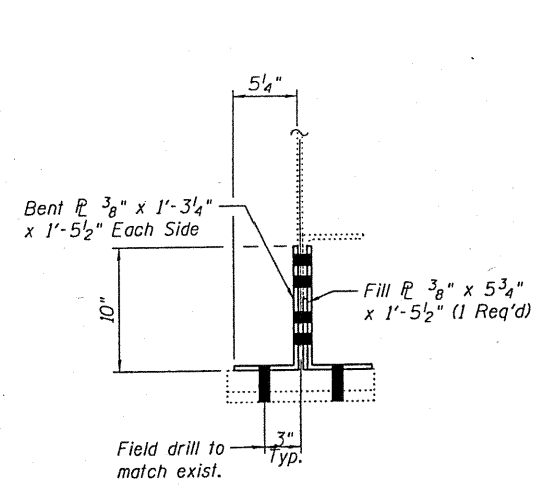
If crack is on stiffener instead of stringer web then a 13/16" min ϕ crack arrester hole is to be drilled at each end of the crack in lieu of the web removal shown.

Area of stringer web to be removed, method to be approved by Engineer prior to commencing work. After grinding the area should be spot cleaned and painted with an aluminum epoxy mastic primer.

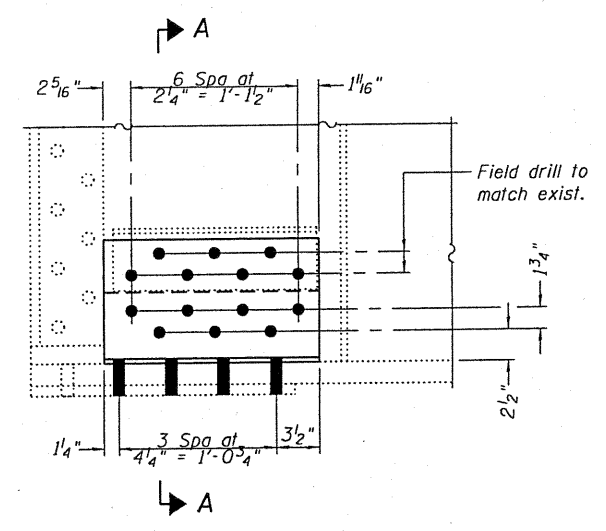


REPAIR J
(Beam 1 Span 9 WB Bridge)
Cost included with Structural Steel Repair

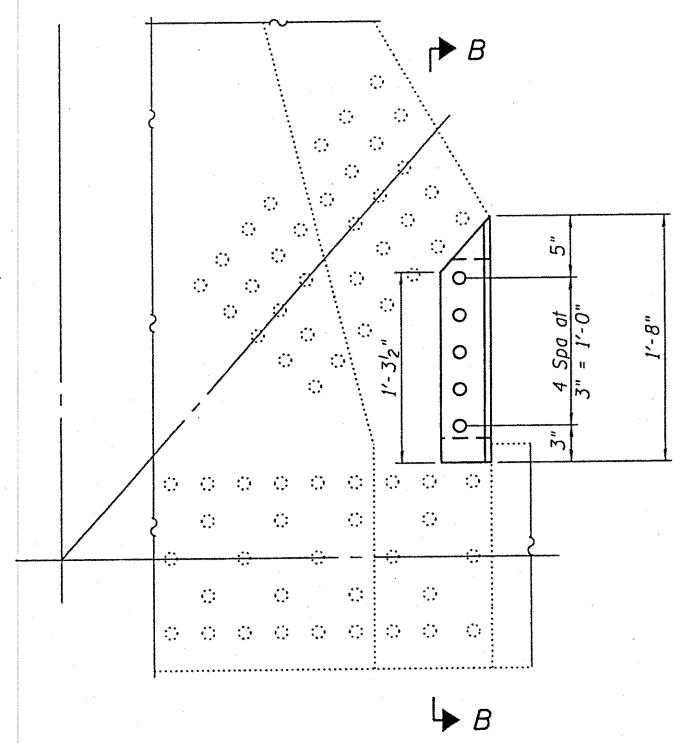
Fasteners shall be high strength bolts. Bolts 3/4" ϕ , open holes 13/16" ϕ , unless otherwise noted. New holes in existing members are to be filled drilled using holes in new members as a template.



SECTION A-A



REPAIR K
(FB12 S. End
WB Bridge)



REPAIR L
(FB13 N. End
EB Bridge)

DESIGNED - A.T.H.	EXAMINED - <i>A. Carl Pitzer</i>	DATE - NOVEMBER 22, 2010	STATE OF ILLINOIS DEPARTMENT OF TRANSPORTATION	DETAILS		F.A.I. RTE. 270	SECTION 60-1B-1-4	COUNTY Madison	TOTAL SHEETS 9	SHEET NO. 9	
CHECKED - M.K.C.	PASSED - <i>Ralph E. Anderson</i>			SN 060-0036 & 0037		CONTRACT NO. 76E58		ILLINOIS FED. AID PROJECT			
DRAWN - Drew Christopher				SHEET NO. 6 OF 6 SHEETS							
CHECKED - A.T.H. M.K.C.											