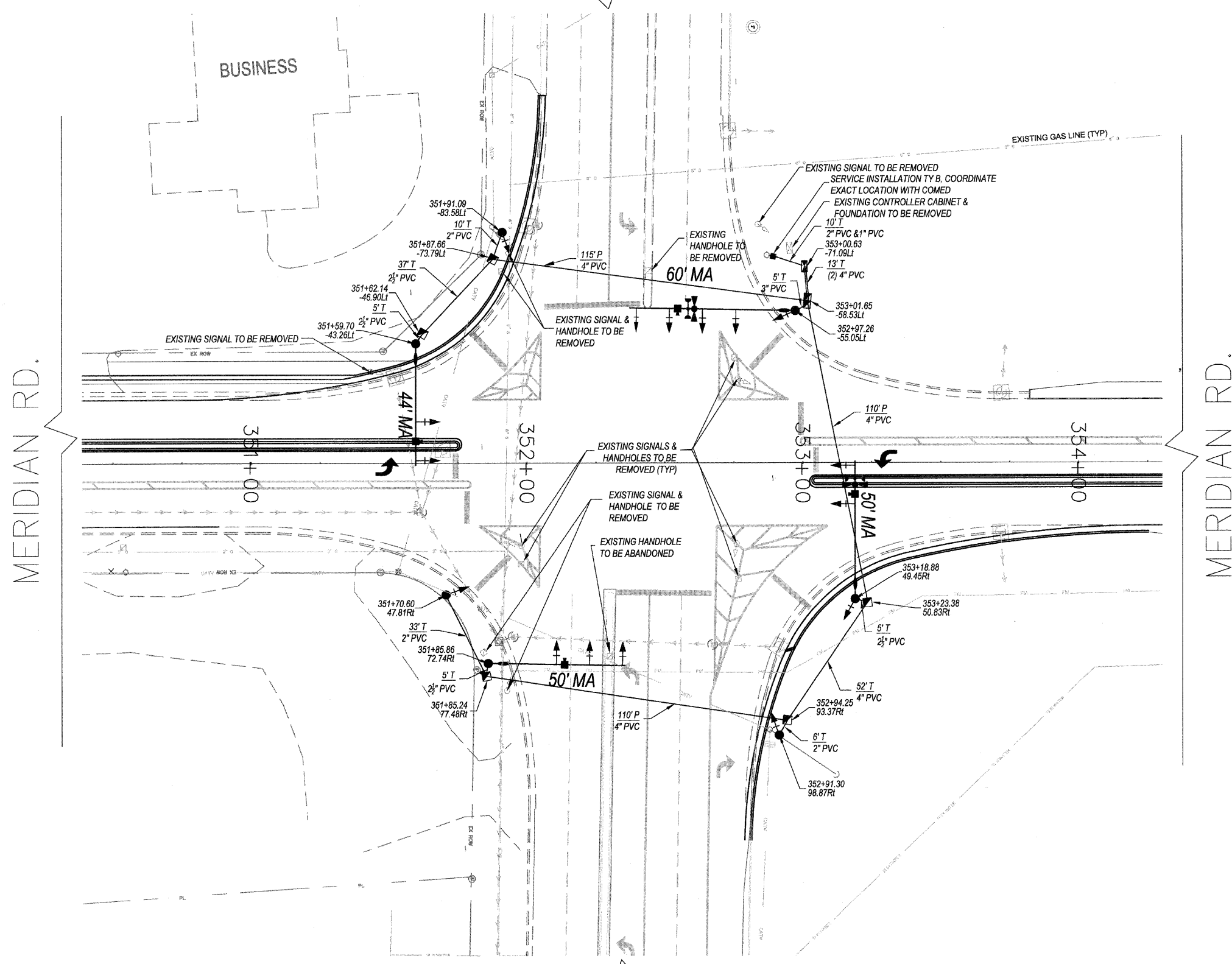


WEST STATE ST.



NOTE:
 THE CONTRACTOR SHALL CONDUCT THIS WORK IN SUCH A WAY THAT THE EXISTING SIGNALS REMAIN IN OPERATION UNTIL SUCH TIME AS THE PROPOSED SIGNALS CAN BE TURNED ON AND BECOME OPERATIONAL. THE CONTRACTOR SHALL COORDINATE THE TURN ON OF THE PROPOSED SIGNALS WITH THE ENGINEER.

THE CONTRACTOR SHALL NOT BEGIN THE REMOVAL OF THE CORNER ISLANDS AND MEDIANS UNTIL ALL NEW TRAFFIC SIGNAL EQUIPMENT AND COMPONENTS ARE DELIVERED AND ON SITE.

TRAFFIC SIGNAL LEGEND

EXISTING	PROPOSED

SCALES:
 1" = 20' HOR

WEST STATE ST.