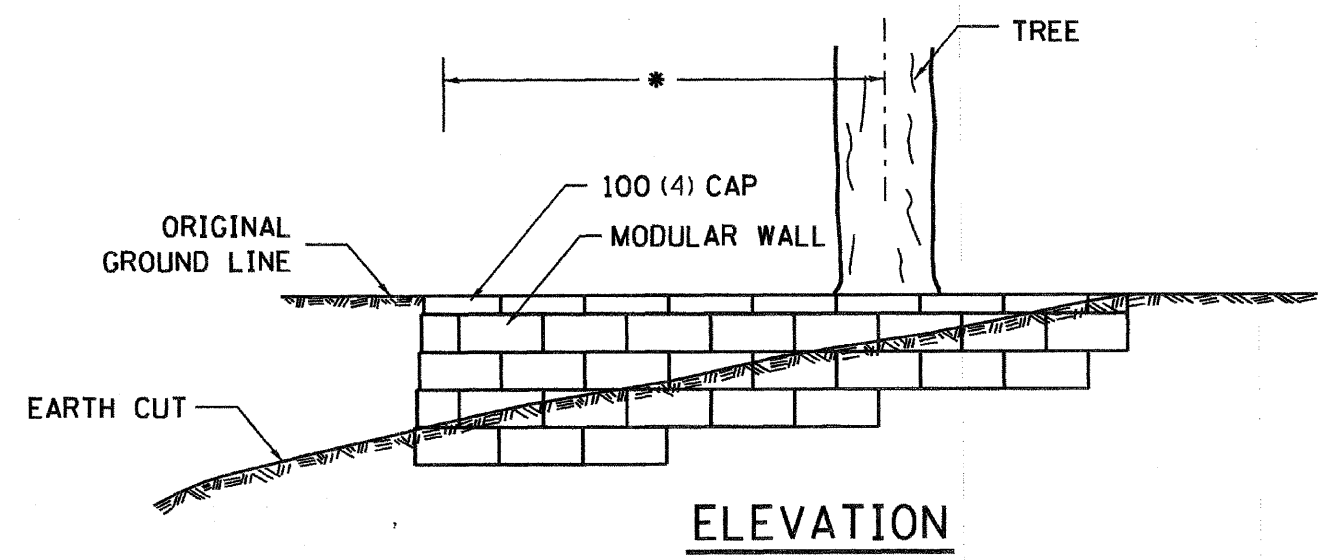
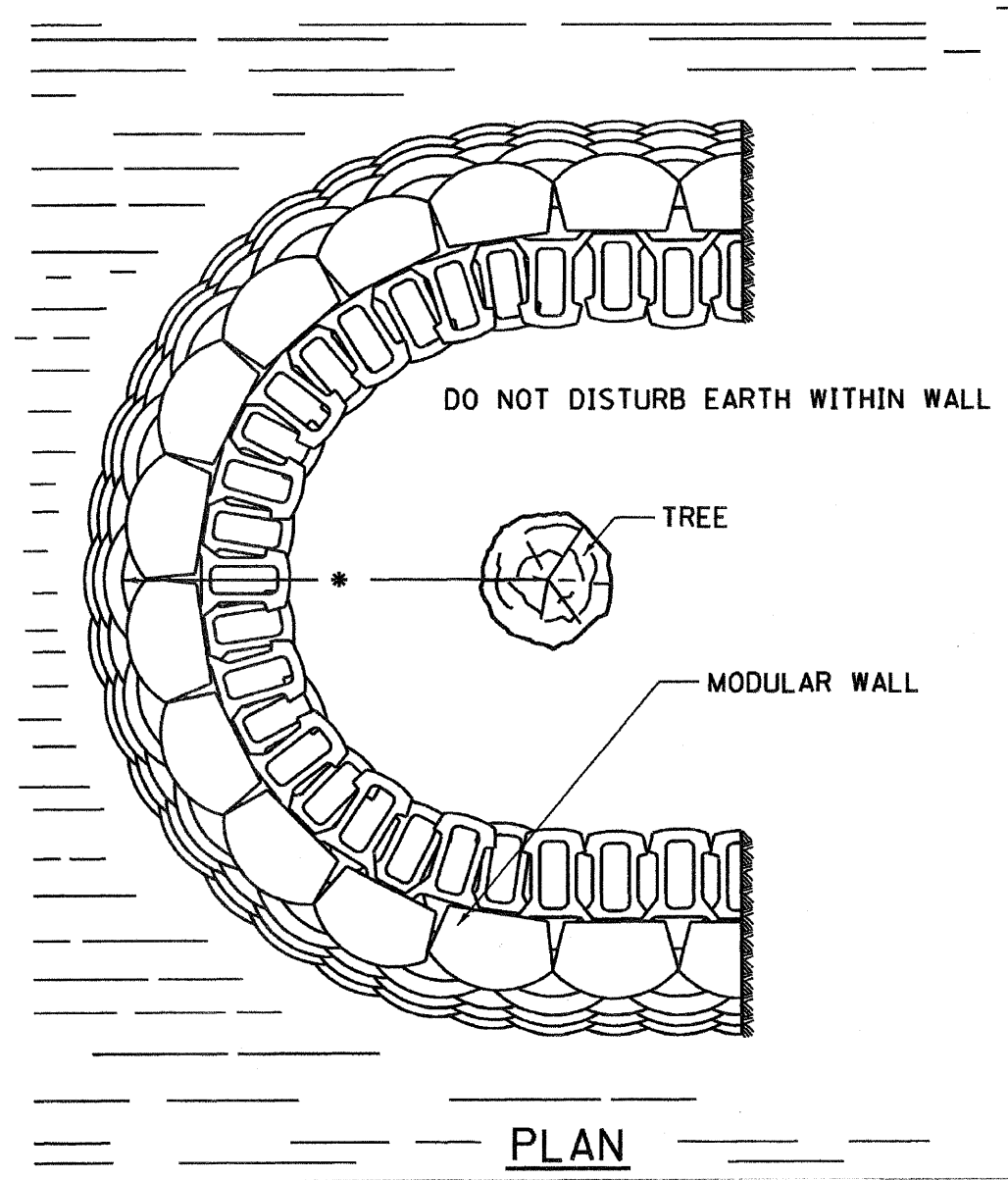


# TREE WALL



HEIGHT OF WALL DEPENDENT ON SLOPE OF THE CUT.

\* THE RADIUS OF THE TREE WALL SHALL BE DETERMINED BY MULTIPLYING 6 BY THE DIAMETER OF THE TREE, WITH A MAXIMUM OF A 3.6m (12 FT.) RADIUS.

USE 200 (8) HIGH BLOCKS EXCEPT WHEN HEIGHT OF WALL IS LESS THAN 600 (24), THEN 100 (4) HIGH BLOCKS SHALL BE USED.

## NOTES

SPECIAL CARE SHALL BE TAKEN BY THE CONTRACTOR NOT TO DISTURB THE EARTH OR THE ROOTS WITHIN THE PROPOSED TREE WALL.

THESE TREE WALLS SHALL BE PAID FOR AT THE CONTRACT UNIT PRICE PER SQUARE METER (SQ. FT.) FOR "SEGMENTAL CONCRETE BLOCK WALL" INCLUDED IN THIS SHALL BE THE FACE OF THE WALL THAT ARE BURIED.

ALL DIMENSIONS ARE IN MILLIMETERS (INCHES) UNLESS OTHERWISE NOTED.

REVISED - 11-01-07	<b>REGION 2 / DISTRICT 2 STANDARD</b>				F.A. RTE.	SECTION	COUNTY	TOTAL SHEETS	SHEET NO.
REVISED -									
REVISED -					CONTRACT NO.				
REVISED -					SCALE: 1.0000' / IN.	SHEET NO.	OF SHEETS	STA. TO STA.	FED. ROAD DIST. NO.