

STATE OF ILLINOIS
DEPARTMENT OF TRANSPORTATION
DIVISION OF HIGHWAYS

**PROPOSED
HIGHWAY PLANS**

ENTRY CORRIDOR TREE PLANTING PROJECT
FAP 68 (IL 23) AND FAP 623 (US6/71)
SECTION 10-00164-00-LS
PROJECT NO.: TE-00D3 (061)
ILLINOIS GREEN STREETS
CITY OF OTTAWA
LASALLE COUNTY
JOB NO.: C-93-137-10

F. A. P. NO.	SECTION	COUNTY	TOTAL SHEETS	SHEET NO.
86,623	10-00164-00-LS	LASALLE	27	1
STA.		TO STA.		
FED. ROAD DIST. NO. 3		FED. AID PROJECT TE-00D3(061)		

CONTRACT #87470

INDEX OF SHEETS

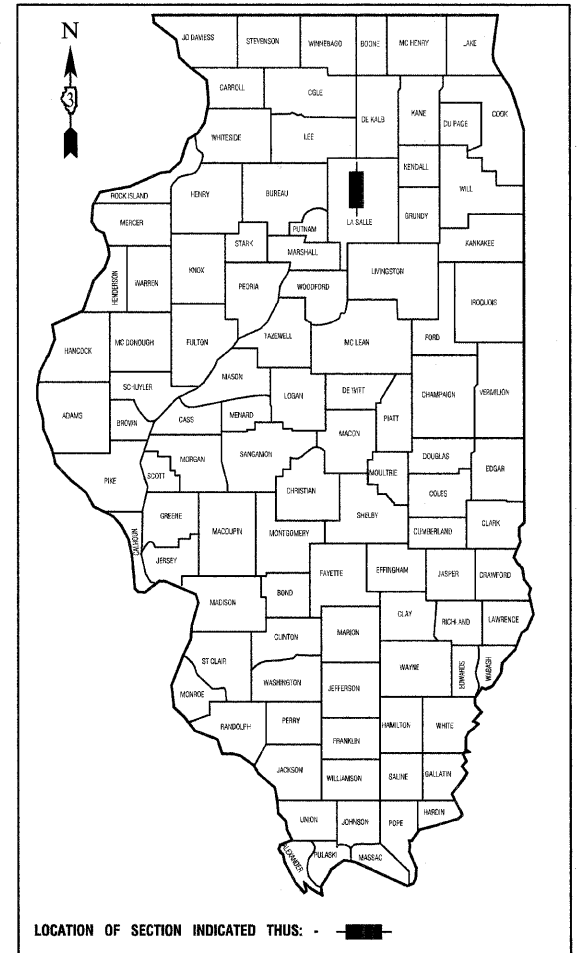
1. COVER SHEET
2. PLANT SCHEDULE & UTILITY CONTACTS
3. SUMMARY OF QUANTITIES
- 4.-6. LANDSCAPING PLAN - WEST CORRIDOR
- 7.-15. LANDSCAPING PLAN - EAST CORRIDOR
- 16.-19. LANDSCAPING PLAN - SOUTH CORRIDOR
- 20.-26. LANDSCAPING PLAN - NORTH CORRIDOR
27. CONSTRUCTION DETAILS

HIGHWAY STANDARDS

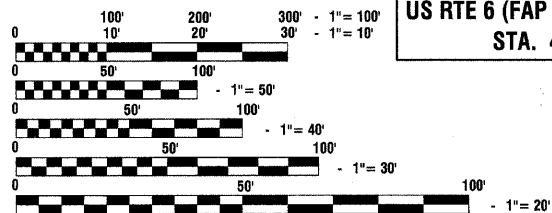
- | | |
|-----------|---|
| 000001-01 | STANDARD SYMBOLS, ABBREVIATIONS, AND PATTERNS |
| 701006-03 | OFF-RD OPERATIONS, 2L, 2W, 15' (4.5 m) TO 24" (600 mm) FROM PAVEMENT EDGE |
| 701101-02 | OFF-RD MOVING OPERATIONS, MULTILANE, 15' (4.5 m) TO 24" (600 mm) FROM PAVEMENT EDGE |
| 701501-01 | URBAN LANE CLOSURE, 2L, 2W, UNDIVIDED |
| 701601-07 | URBAN LANE CLOSURE, MULTILANE, 1W OR 2W WITH NONTRAVERSABLE MEDIAN |
| 701606-06 | URBAN LANE CLOSURE, MULTILANE, 2W WITH MOUNTABLE MEDIAN |
| 701801-04 | LANE CLOSURE MULTILANE 1W OR 2W CROSSWALK OR SIDEWALK CLOSURE |
| 701901-01 | TRAFFIC CONTROL DEVICES |

TRAFFIC DATA - US ROUTE 6 AND IL ROUTE 23
2009 ADT: 4,350 - 10,600 US ROUTE 6 (ARTERIAL)
4,650 - 21,000 IL ROUTE 23 (ARTERIAL)

POSTED SPEED LIMIT: 35 - 55 MPH
DESIGN SPEED LIMIT: 35 - 55 MPH



I.D.O.T. FEDERAL AID DESIGN ENGINEER:
CONSULTANTS: ROBINSON ENGINEERING, LTD. 708-331-6700 10159-COVER-01 - 001



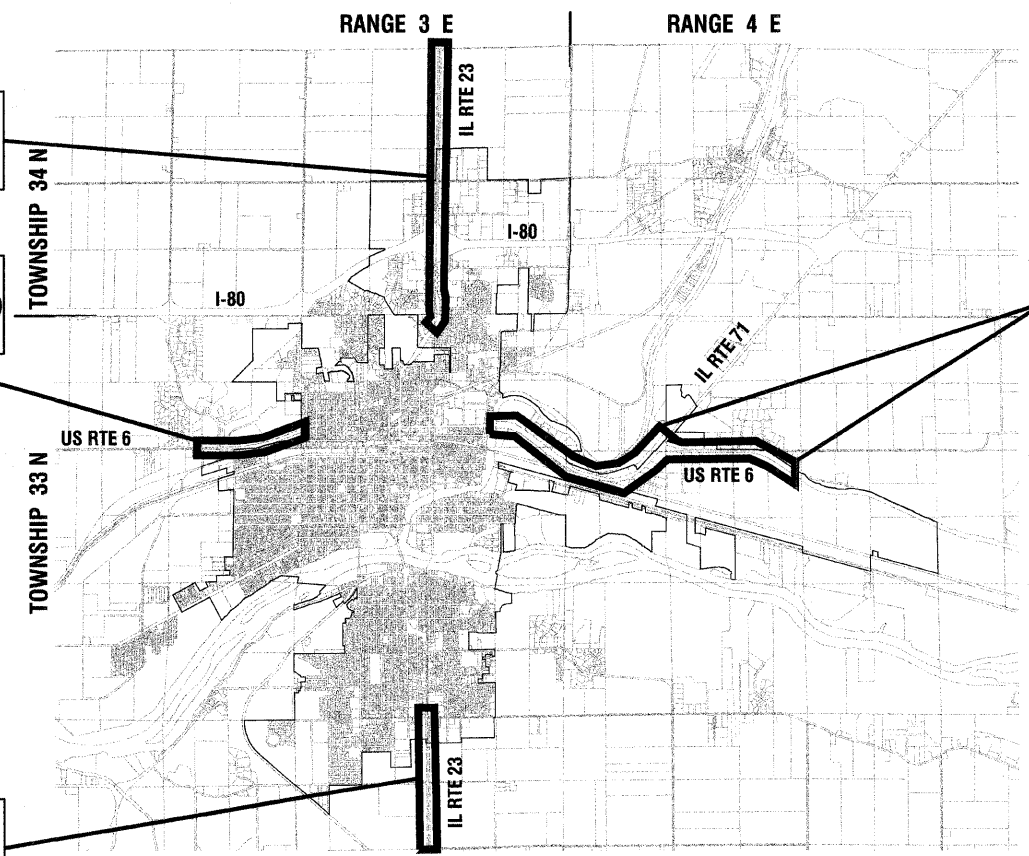
FULL SIZE PLANS HAVE BEEN PREPARED USING STANDARD ENGINEERING SCALES, REDUCED SIZED PLANS WILL NOT CONFORM TO STANDARD SCALES, IN MAKING MEASUREMENTS ON REDUCED PLANS, THE ABOVE SCALES MAY BE USED.

J. U. L. I. E.
JOINT UTILITY LOCATION INFORMATION FOR EXCAVATION
1-800-892-0123 or 811

NORTH CORRIDOR
IL RTE 23 (FAP 68) - (COLUMBUS STREET)
STA. 77+00 - 184+00

WEST CORRIDOR
US RTE 6 (FAP 623) - (NORRIS DRIVE)
STA. 4+00 - 49+00

SOUTH CORRIDOR
IL RTE 23 (FAP 68) - (1ST AVENUE)
STA. 13+00 - 73+00



1" = 3600'

EAST CORRIDOR
US RTE 6 (FAP 623) &
IL RTE 71 (NORRIS DRIVE)
STA. 148+00 - 233+00 (EAST/NE)
& 6+00 - 51+00 (EAST)



PREPARED BY OR UNDER THE DIRECT SUPERVISION OF:

Joseph R. Alvarez
10/29/2010

STATE OF ILLINOIS
DEPARTMENT OF TRANSPORTATION
DIVISION OF HIGHWAYS

SUBMITTED 11-4 2010
David A. Noble
CITY ENGINEER

PASSED 11-8 2010
George J. ...
DISTRICT 3 IMPLEMENTATION ENGINEER

RELEASING FOR BID BASED ON LIMITED REVIEW
11-8 2010
George J. ...
DEPUTY DIRECTOR OF HIGHWAYS, REGION 2 ENGINEER

**PRINTED BY THE AUTHORITY
OF THE STATE OF ILLINOIS**

CONTRACT NO. 87470

LOCATION MAP
GROSS LENGTH=33,500 FEET=6.34 MILES
NET LENGTH=33,500 FEET=6.34 MILES