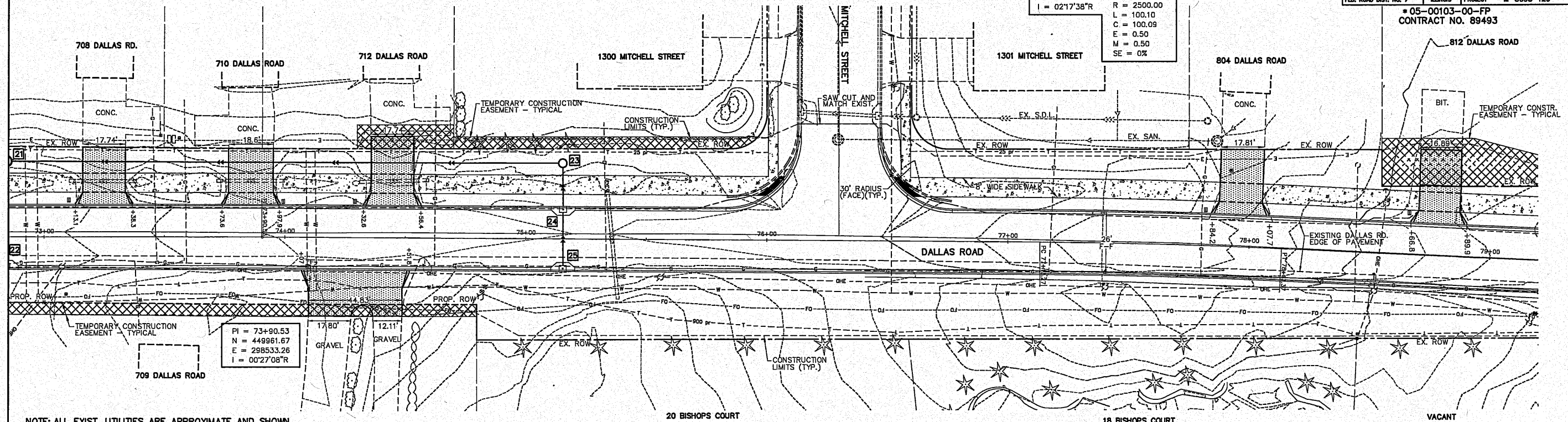


ROUTE NO.	SECTION	COUNTY	TOTAL SHEETS	THIS SHEET
F.A.U. 6739	*	TAZEWELL	36	15
FED. ROAD DIST. NO. 7		ILLINOIS	PROJECT M-5093-129	

CURVE #2 CIRCULAR
 PI = 77+63.33 Dc = 0217'31"
 N = 450334.45 Dc = 0217'31"
 E = 298536.26 T = 50.05
 R = 2500.00 L = 100.10
 C = 100.09
 E = 0.50
 M = 0.50
 SE = 0%

*05-00103-00-FP
 CONTRACT NO. 89493



NOTE: ALL EXIST. UTILITIES ARE APPROXIMATE AND SHOWN FOR INFORMATION ONLY AND ARE TO BE VERIFIED IN THE FIELD BY THE CONTRACTOR.
 STORM SEWER QUANTITIES ARE MEASURED FROM INSIDE WALL OF STRUCTURE TO INSIDE WALL OF STRUCTURE.

STORM SEWER STRUCTURE DESCRIPTIONS

- 23 INLETS, TYPE B, TYPE 8 GRATE, 31.58' LT. STA. 75+15.46, T/CONC. 770.35, INV. 766.50 (15"S), INV. 766.60 (12"E)
- 24 INLETS, TYPE G-1, 12.33' LT. STA. 75+15.46, T/C 770.63, E/P 770.19, INV. 766.77 (12"W), INV. 766.87 (12"E)
- 25 INLETS, TYPE G-1, 12.33' RT. STA. 75+15.46, T/C 770.63, E/P 770.19, INV. 767.10 (12"W)

STORM SEWER PIPE SCHEDULE

- 21 - 23 STORM SEWERS, CLASS A, TYPE 2, 15"-228 FT. @ 1.00%, T.B.(ST.S.) = 54 C.Y.
- 23 - 24 STORM SEWERS, CLASS A, TYPE 1, 12"-17 FT. @ 1.00%, T.B.(ST.S.) = 5 C.Y.
- 24 - 25 STORM SEWERS, CLASS A, TYPE 1, 12"-23 FT. @ 1.00%, T.B.(ST.S.) = 4 C.Y.

SCALES:
 1" = 20' HOR
 1" = 5' VER

