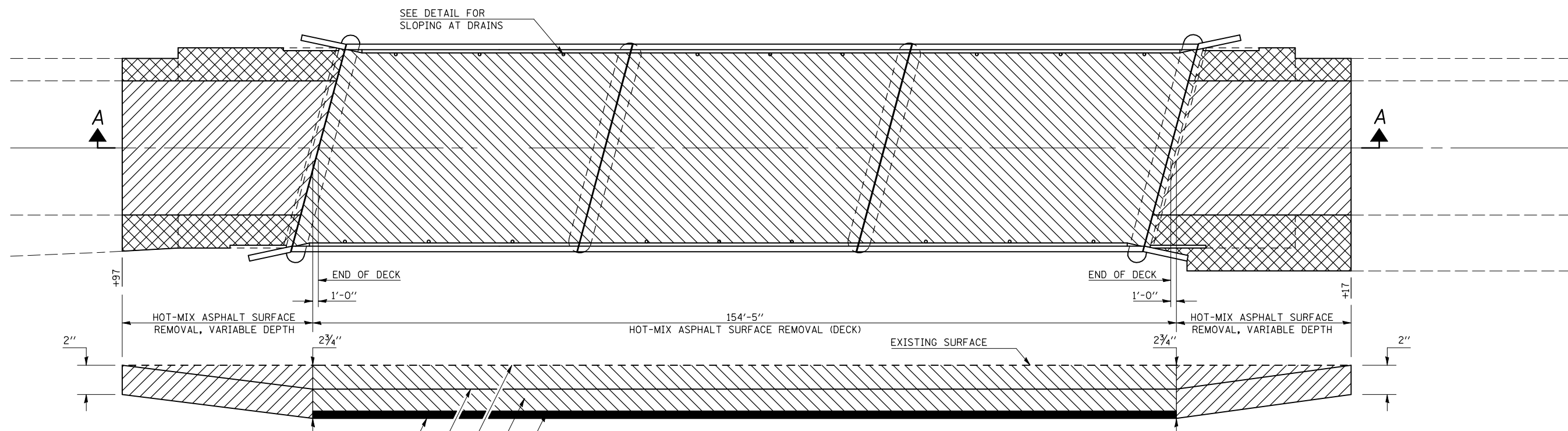
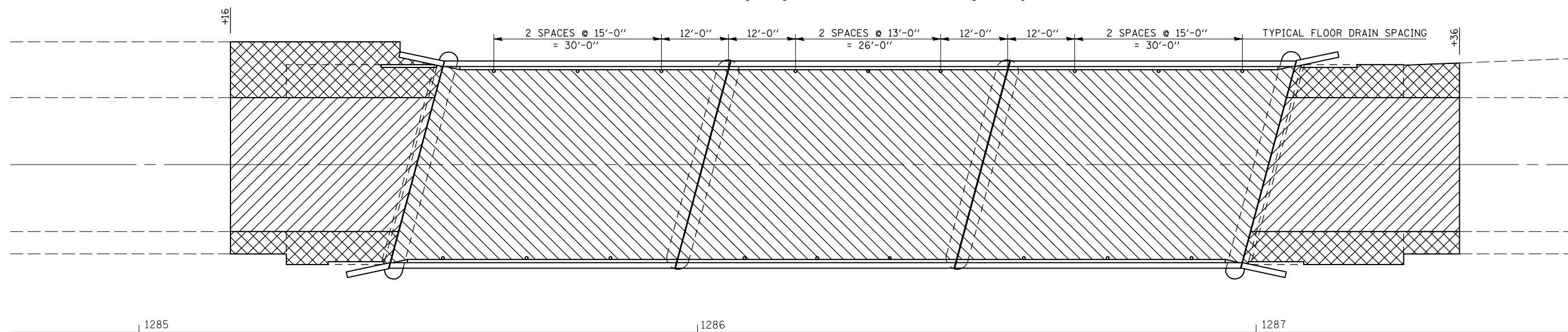


# WEARING SURFACE DETAILS

## S.N. 092-0001 (EB) & 092-0002 (WB)

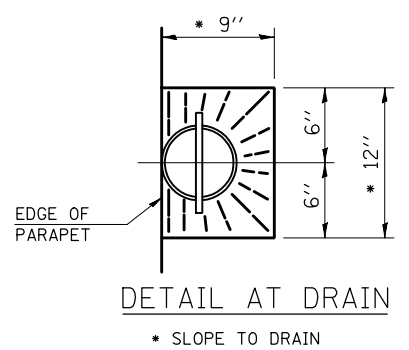


**SECTION A-A**  
(SHOWING DETAIL OF MILLING & RESURFACING)

**LEGEND**

- H.M.A. SURFACE REMOVAL (DECK) & PROPOSED POLYMERIZED H.M.A. SURFACE CSE., MIX D, N 105 (168 LB/SQ YD) & WATERPROOFING MEMBRANE SYSTEM
- H.M.A. SURFACE REMOVAL, VARIABLE DEPTH & PROPOSED POLYMERIZED H.M.A. SURFACE CSE., MIX D, N 105 (224 LB/SQ YD)
- H.M.A. SURFACE REMOVAL, VARIABLE DEPTH & PROPOSED H.M.A. SHOULDERS, 2"

- PROPOSED WATERPROOFING MEMBRANE SYSTEM
- PROPOSED POLYMERIZED H.M.A. SURFACE CSE., MIX D, N 105 (168 LB/SQ YD)



**BILL OF MATERIALS**

ITEM	UNIT	TOTAL
H.M.A. SURFACE REMOVAL (DECK)	SQ YD	1167.0
H.M.A. SURFACE REMOVAL, VARIABLE DEPTH	SQ YD	542.0
WATERPROOFING MEMBRANE SYSTEM	SQ YD	1185.0
POLYMERIZED BITUMINOUS MATERIALS (PRIME COAT)	GAL	55.0
POLYMERIZED HOT-MIX ASPHALT SURFACE COURSE, MIX "D", N 105	TON	138.0
HOT-MIX ASPHALT SHOULDERS, 2"	SQ YD	192.0

FILE NAME =	USER NAME = s1smgm	DESIGNED - GMS	REVISED -
ct:\pw\work\p1\dot\smgm\0187665\0590963 Bridge Repairs.dgn		DRAWN - GMS	REVISED -
PLOT SCALE = 40.0001' / IN.		CHECKED -	REVISED -
PLOT DATE = 10/18/2010		DATE -	REVISED -

**STATE OF ILLINOIS**  
**DEPARTMENT OF TRANSPORTATION**

<b>WEARING SURFACE DETAILS</b>			
<b>S.N. 092-0001 (EB) &amp; 092-0002 (WB)</b>			
SCALE:	SHEET NO. - OF - SHEETS	STA.	TO STA.

F.A.I. RTE.:	SECTION	COUNTY	TOTAL SHEETS	SHEET NO.
74	(92-9BR)I-1	VERMILION	15	9
FED. ROAD DIST. NO. ILLINOIS FED. AID PROJECT			CONTRACT NO. 90963	