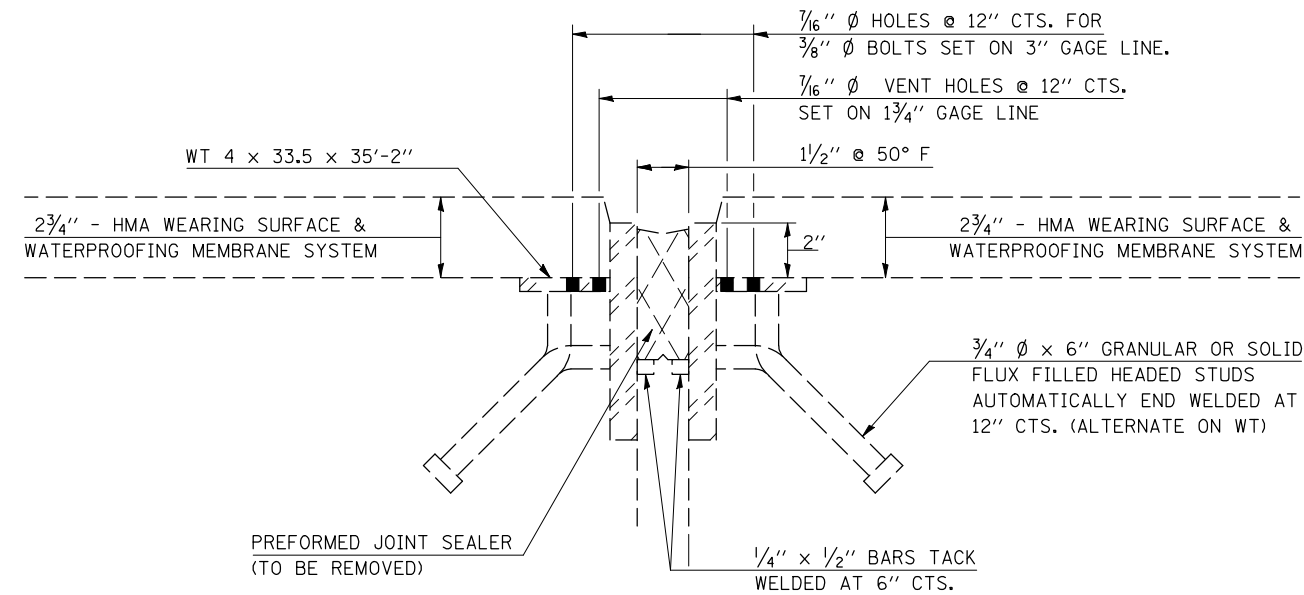


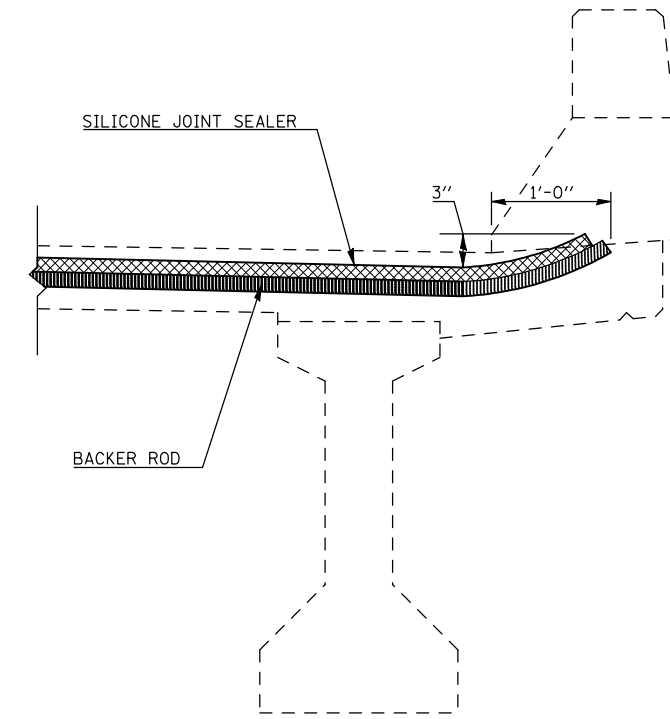
JOINT REPAIR DETAILS

S.N. 092-0001 (EB) & 092-0002 (WB)

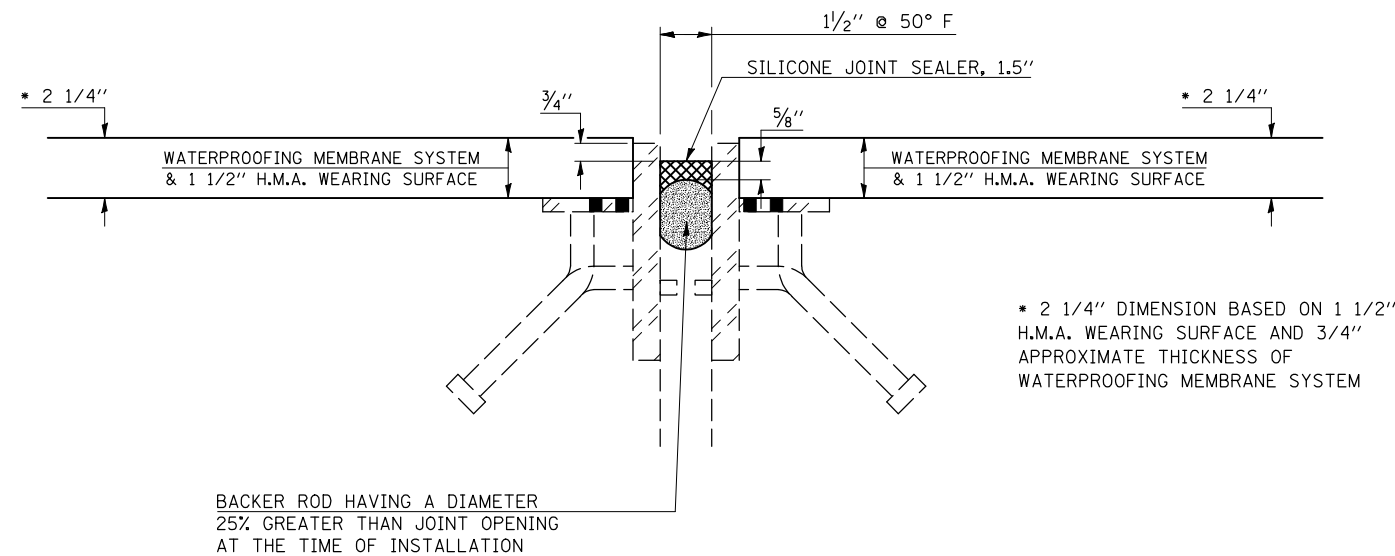
(EXPANSION JOINTS OVER PIERS)



SECTION AT EXISTING JOINT



SECTION AT PARAPET
SILICONE JOINT SEALER



SECTION AT PROPOSED JOINT

NOTES

THE EXISTING PREFORMED JOINT SEALS SHALL BE REMOVED AND THE STEEL JOINT ARMOR SHALL BE CLEANED PRIOR TO THE INTALLATION OF THE PROPOSED SILICONE JOINT SEALER. COST INCLUDED WITH SILICONE JOINT SEALER, 1.5"

BILL OF MATERIALS - TWO STRUCTURES

ITEM	UNIT	TOTAL
SILICONE JOINT SEALER, 1.5"	FOOT	149.0

FILE NAME =	USER NAME = s1msgm	DESIGNED - GMS	REVISED -
ct:\pw\work\p1\dot\s1msgm\d0187665\d590963	Bridge Repairs.dgn	DRAWN - GMS	REVISED -
PLOT SCALE = 40.0001' / IN.	CHECKED -	DATE -	REVISED -
PLOT DATE = 10/18/2010			

**STATE OF ILLINOIS
DEPARTMENT OF TRANSPORTATION**

**JOINT REPAIR DETAILS
S.N. 092-0001 (EB) & 092-0002 (WB)**

SCALE: SHEET NO. - OF - SHEETS STA. TO STA.

F.A.I. RTE.	SECTION	COUNTY	TOTAL SHEETS	SHEET NO.
74	(92-9BR)I-1	VERMILION	15	12
CONTRACT NO. 90963				
FED. ROAD DIST. NO. ILLINOIS FED. AID PROJECT				