

F.A.I. RTE.	SECTION	COUNTY	TOTAL SHEETS	SHEET NO.
74	(92-9BR)I-1	VERMILION	15	1
		ILLINOIS	CONTRACT NO. 90963	

STATE OF ILLINOIS
DEPARTMENT OF TRANSPORTATION
DIVISION OF HIGHWAYS

PROPOSED HIGHWAY PLANS

F.A.I. ROUTE 74 (I 74)
SECTION (92-9BR)I-1

BRIDGE DECK REPAIRS
OVER STONY CREEK NE OF FITHIAN
VERMILION COUNTY

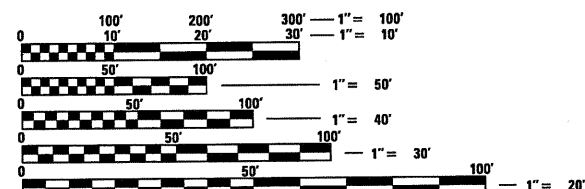
C-95-063-98

FOR INDEX OF SHEETS, SEE SHEET NO. 2
FOR SUMMARY OF QUANTITIES, SEE SHEET NO. 3

CURRENT TRAFFIC DATA

2010 ADT = 23,900
2030 ADT = 32,800
PU + PC % = 73.1
SU % = 3.1
MU% = 23.8

DESIGN DESIGNATION INTERSTATE

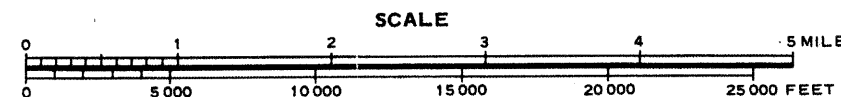
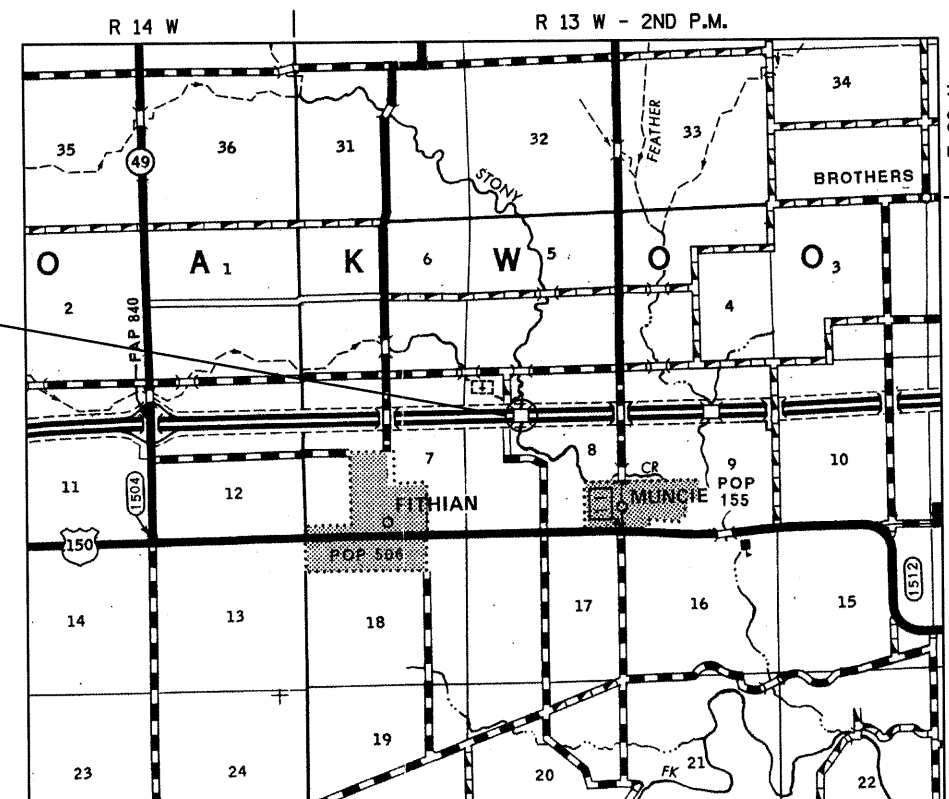


FULL SIZE PLANS HAVE BEEN PREPARED USING STANDARD ENGINEERING SCALES. REDUCED SIZED PLANS WILL NOT CONFORM TO STANDARD SCALES. IN MAKING MEASUREMENTS ON REDUCED PLANS, THE ABOVE SCALES MAY BE USED.

J.U.L.I.E.
JOINT UTILITY LOCATION INFORMATION FOR EXCAVATION
1-800-892-0123
OR 811 OAKWOOD TOWNSHIP

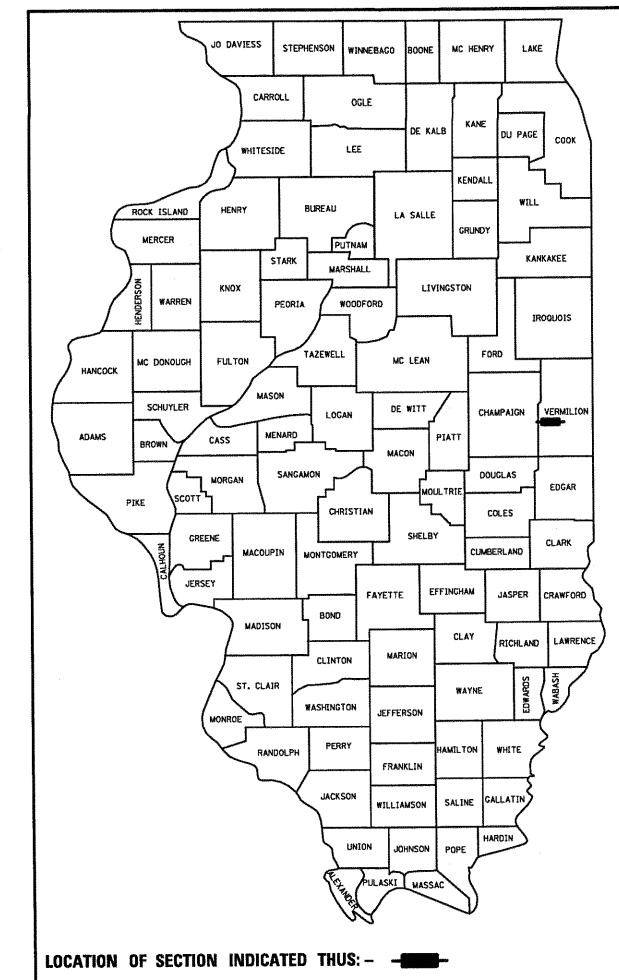
PROJECT ENGINEER: TIM BRANDENBURG
PROJECT MANAGER: GARY SIMS
217-465-4181
CONTRACT NO. 90963

EXISTING STRUCTURES
092-0001 (EB) & 092-0002 (WB)
F.A.I. 74 OVER STONY CREEK
@ STATION 1286+17
PROPOSED STRUCTURE REPAIRS



GROSS LENGTH = N.A.
NET LENGTH = N.A.

D-95-056-98



LOCATION OF SECTION INDICATED THUS: -

STATE OF ILLINOIS
DEPARTMENT OF TRANSPORTATION
DIVISION OF HIGHWAYS

SUBMITTED *Oct 21 20 10*
Joseph E. Howe Jr.
DEPUTY DIRECTOR OF HIGHWAYS, REGION ENGINEER

Dec 10 20 10
Scott E. Stitt PE, Inc.
ENGINEER OF DESIGN AND ENVIRONMENT

Dec 10 20 10
Christene M. Reed
DIRECTOR OF HIGHWAYS, CHIEF ENGINEER

PRINTED BY THE AUTHORITY
OF THE STATE OF ILLINOIS

INDEX OF SHEETS

SHEET NO.	DESCRIPTION
1	COVER SHEET
2	INDEX OF SHEETS
2	LIST OF STANDARDS
2	GENERAL NOTES
3	SUMMARY OF QUANTITIES
4	GENERAL PLAN & ELEVATION
5	TYPICAL ROADWAY CROSS SECTIONS
6	DECK CROSS SECTIONS
7	STAGE CONSTRUCTION DETAILS
8	TEMPORARY CONCRETE BARRIER LAYOUT
9	WEARING SURFACE DETAILS
10	WATERPROOFING MEMBRANE SYSTEM DETAILS
11	AS-BUILT PATCHING PLAN
12	JOINT REPAIR DETAILS
13-15	WIDTH RESTRICTION SIGNING DETAILS

LIST OF HIGHWAY STANDARDS

STANDARD NO.	DESCRIPTION
000001-06	STANDARD SYMBOLS, ABBREVIATIONS AND PATTERNS
001006	DECIMAL OF AN INCH AND OF A FOOT
701101-02	OFF-ROAD OPERATIONS, MULTILANE, 15' (4.5 m) TO 24" (600 mm) FROM PAVEMENT EDGE
701106-02	OFF-ROAD OPERATIONS, MULTILANE, MORE THAN 15' (4.5 m) AWAY
701400-05	APPROACH TO LANE CLOSURE, FREEWAY/EXPRESSWAY
701402-08	LANE CLOSURE, FREEWAY/EXPRESSWAY, WITH BARRIER
701406-06	LANE CLOSURE, FREEWAY/EXPRESSWAY, DAY OPERATIONS ONLY
701426-04	LANE CLOSURE, MULTILANE, INTERMITTENT OR MOVING OPERATIONS, FOR SPEEDS GREATER THAN OR EQUAL TO 45 MPH
701901-01	TRAFFIC CONTROL DEVICES
704001-06	TEMPORARY CONCRETE BARRIER
780001-02	TYPICAL PAVEMENT MARKINGS
781001-03	TYPICAL APPLICATIONS RAISED REFLECTIVE PAVEMENT MARKERS

GENERAL NOTES

G.N.-100

ENGLISH UNITS OF MEASUREMENT SHALL GOVERN OVER AND SUPERSEDE ANY METRIC UNITS SHOWN IN THIS CONTRACT. WHERE INCLUDED, METRIC UNITS ARE FOR INFORMATION ONLY.

G.N.-406

THE QUANTITIES INCLUDED IN THE PLANS FOR HOT-MIX ASPHALT RESURFACING ARE INTENDED TO GIVE THE COVERAGE SHOWN ON THE TYPICAL CROSS SECTIONS. IT IS NOT INTENDED TO INCREASE THE THICKNESS OF THE HOT-MIX ASPHALT MIXTURE IN ORDER TO USE ALL OF THE QUANTITIES INCLUDED IN THE CONTRACT.

G.N.-406H

MIXTURE REQUIREMENTS

THE FOLLOWING MIXTURE REQUIREMENTS ARE APPLICABLE FOR THIS PROJECT:

Location	I-74
Mixture Use	Bridge Deck Wearing Surface, Approach Overlay & H.M.A. Shoulders
AC/PG	SBS PG 70-22
RAP % (Max)	10
Design Air Voids	4.0% @ Ndes=105
Mix Comp(Gradation)	IL 9.5
Friction Aggregate	Mix D

G.N.-781

RAISED REFLECTIVE PAVEMENT MARKERS SHALL BE PLACED IN ACCORDANCE WITH STANDARD 781001, AND THE DETAILS SHOWN IN THE PLANS. IF THERE IS ANY DISCREPANCY BETWEEN THE STANDARD AND THE DETAILS IN THE PLANS, THE DETAILS IN THE PLANS SHALL GOVERN. THE FINAL PAVEMENT MARKINGS SHALL BE IN PLACE PRIOR TO PLACING THE RAISED REFLECTIVE PAVEMENT MARKERS AND THE RAISED REFLECTIVE PAVEMENT MARKERS SHALL BE PLACED MIDWAY IN THE 30 FOOT (9m) SPACE BETWEEN THE DASHED CENTERLINE STRIPES (WHEN APPLICABLE).

NO COMMITMENTS

FILE NAME =	USER NAME = smsgm	DESIGNED - GMS	REVISED -	STATE OF ILLINOIS DEPARTMENT OF TRANSPORTATION	INDEX OF SHEETS, LIST OF STANDARDS & GENERAL NOTES	F.A.I. RTE.	SECTION	COUNTY	TOTAL SHEETS	SHEET NO.	
ct:\pw_work\pwidot\smsgm\d0187665\d5909	3 Bridge Repairs.dgn	DRAWN - GMS	REVISED -			74	(92-9BR)I-1	VERMILION	15	2	
PLOT SCALE = 40.0001' / IN.	CHECKED -	REVISIED -	REVISIED -			CONTRACT NO. 90963					
PLOT DATE = 10/18/2010	DATE -	REVISIED -	REVISIED -			FED. ROAD DIST. NO. [ILLINOIS] FED. AID PROJECT					

SUMMARY OF QUANTITIES

FAI-74 VERMILION CO. RURAL INTERSTATE 100% STATE MINOR STRUCTURE REPAIR	FAI-74 VERMILION CO. RURAL INTERSTATE 100% STATE MINOR STRUCTURE REPAIR
0014 S.N. 092-0001	0014 S.N. 092-0002

CODE NO	ITEM	UNIT	TOTAL QUANTITY	QUANTITY	QUANTITY
			100% STATE		
40600115	POLYMERIZED BITUMINOUS MATERIALS (PRIME COAT)	GALLON	55.0	27.5	27.5
40603550	POLYMERIZED HOT-MIX ASPHALT SURFACE COURSE, MIX "D", N-105	TON	138.0	69.0	69.0
48203005	HOT-MIX ASPHALT SHOULDERS, 2"	SQ YD	192.0	96.0	96.0
58100200	WATERPROOFING MEMBRANE SYSTEM	SQ YD	1185.0	592.5	592.5
67100100	MOBILIZATION	L SUM	1.0	0.5	0.5
70100207	TRAFFIC CONTROL AND PROTECTION, STANDARD 701402	EACH	2.0	1.0	1.0
70100700	TRAFFIC CONTROL AND PROTECTION, STANDARD 701406	L SUM	1.0	0.5	0.5
70400100	TEMPORARY CONCRETE BARRIER	FOOT	900.0	450.0	450.0
70400200	RELOCATE TEMPORARY CONCRETE BARRIER	FOOT	900.0	450.0	450.0
* 78000200	THERMOPLASTIC PAVEMENT MARKING - LINE 4"	FOOT	990.0	495.0	495.0
* 78100100	RAISED REFLECTIVE PAVEMENT MARKER	EACH	12.0	6.0	6.0
78300200	RAISED REFLECTIVE PAVEMENT MARKER REMOVAL	EACH	12.0	6.0	6.0
X4401198	HOT-MIX ASPHALT SURFACE REMOVAL, VARIABLE DEPTH	SQ YD	542.0	271.0	271.0
X7015005	CHANGEABLE MESSAGE SIGN	CAL DA	28.0	14.0	14.0
* X7200201	WIDTH RESTRICTION SIGNING	L SUM	1.0	0.5	0.5
Z0004556	HOT-MIX ASPHALT SURFACE REMOVAL (DECK)	SQ YD	1167.0	583.5	583.5
Z0016001	DECK SLAB REPAIR (FULL DEPTH, TYPE I)	SQ YD	15.0	7.5	7.5
Z0016002	DECK SLAB REPAIR (FULL DEPTH, TYPE II)	SQ YD	30.0	15.0	15.0
Z0016200	DECK SLAB REPAIR (PARTIAL)	SQ YD	173.0	86.5	86.5
Z0021906	SILICONE JOINT SEALER, 1.5"	FOOT	149.0	74.5	74.5
Z0030250	IMPACT ATTENUATORS, TEMPORARY (NON-REDIRECTIVE), TEST LEVEL 3	EACH	2.0	1.0	1.0
Z0030350	IMPACT ATTENUATORS, RELOCATE (NON- REDIRECTIVE), TEST LEVEL 3	EACH	2.0	1.0	1.0

* SPECIALTY ITEMS

FILE NAME =	USER NAME = simsgm	DESIGNED - GMS	REVISED -	STATE OF ILLINOIS DEPARTMENT OF TRANSPORTATION	SUMMARY OF QUANTITIES	F.A.I. RTE.	SECTION	COUNTY	TOTAL SHEETS	SHEET NO.	
ct:\pw_work\pwidot\simsgm\d0187665\d59093	3 Bridge Repairs.dgn	DRAWN - GMS	REVISED -			74	(92-9BR)-1	VERMILION	15	3	
	PLOT SCALE = 40.0001' / IN.	CHECKED -	REVISED -			CONTRACT NO. 90963					
	PLOT DATE = 10/18/2010	DATE -	REVISED -			FED. ROAD DIST. NO. ILLINOIS FED. AID PROJECT					

GENERAL PLAN & ELEVATION

S.N. 092-0001 & 092-0002

THE EXISTING STRUCTURES WERE BUILT IN 1959 BY THE STATE OF ILLINOIS AS F.A.I. ROUTE 5, SECTION 92-9B AT STATION 1286+17.00 IN VERMILION COUNTY. THE STRUCTURES CARRY I-74 OVER STONY CREEK NORTHEAST OF FITHIAN.

THE STRUCTURES WERE IMPROVED IN 1977 WITH F.A.I. ROUTE 74 SECTION DISTRICT 5 BRIDGE DECK WATERPROOFING 1977-2. IMPROVEMENTS WITH THAT SECTION INCLUDED DECK PATCHING, EXPANSION DEVICE RECONSTRUCTION, DRAIN REPAIRS AND INSTALLATION OF A WATERPROOFING MEMBRANE SYSTEM AND H.M.A. OVERLAY. THE STRUCTURE WAS AGAIN IMPROVED IN 1988 WITH F.A.I. 74 SECTION (92-9B). IMPROVEMENTS WITH THAT SECTION INCLUDED FULL AND PARTIAL DEPTH DECK PATCHING, PARAPET RECONFIGURATION, JOINT REPAIR AND REPLACEMENT OF THE WATERPROOFING MEMBRANE SYSTEM AND H.M.A. WEARING SURFACE. THE WEARING SURFACE WAS MODIFIED IN 2001 WITH FAI-74 SECTION (10-8,92-8,9)RS-1 & (92-10)RS-2. WITH THAT SECTION, THE WEARING SURFACE RECEIVED 1" OF MILLING FOLLOWED BY AN ADDITIONAL 1 3/4" OF H.M.A. OVERLAY.

THE SUPERSTRUCTURE CONSISTS OF A 7" R.C. DECK WITH A WATERPROOFING MEMBRANE SYSTEM AND A NOMINAL 2 3/4" H.M.A. WEARING SURFACE SUPPORTED BY SEVEN 40" P.P.C. I-BEAMS. THE SUPERSTRUCTURE IS SUPPORTED BY TWO SOLID SHAFT HAMMERHEAD PIERS ON SPREAD FOOTINGS AND TWO PILE BENT SPILL-THRU ABUTMENTS. THE STRUCTURE MEASURES 154'-7 7/8" FROM BACK TO BACK OF ABUTMENTS. THE DECK HAS A CLEAR WIDTH OF 34'-0" FROM FACE TO FACE OF PARAPET AND AN OUT-TO-OUT WIDTH OF 37'-2".

METHOD OF CONSTRUCTION: STAGE CONSTRUCTION

SEE PROPOSED IMPROVEMENTS ON THIS SHEET.

PROPOSED WORK

1. REMOVE EXISTING WATERPROOFING MEMBRANE SYSTEM AND H.M.A. WEARING SURFACE ON DECK.
2. VARIABLE-DEPTH MILLING FROM 2" TO 2 3/4" OVER APPROACH PAVEMENTS AND APPROACH ROADWAY.
3. PERFORM FULL AND PARTIAL-DEPTH DECK PATCHING AS DETERMINED BY THE ENGINEER.
4. PLACE PROPOSED WATERPROOFING MEMBRANE SYSTEM AND 1 1/2" H.M.A. WEARING SURFACE OVER DECKS AND 2" H.M.A. OVERLAY OVER APPROACH PAVEMENTS AND APPROACH ROADWAY.
5. REMOVE EXISTING PREFORMED JOINT SEALER AT EXPANSION JOINTS AND REPLACE WITH SILICONE JOINT SEALER.

TOTAL BILL OF MATERIALS

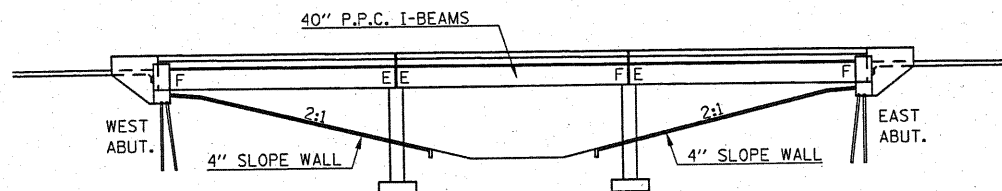
ITEM	UNIT	TOTAL
H.M.A. SURFACE REMOVAL (DECK)	SQ YD	1167.0
H.M.A. SURFACE REMOVAL, VARIABLE DEPTH	SQ YD	542.0
POLYMERIZED BITUMINOUS MAT'L (PRIME COAT)	GAL	55.0
WATERPROOFING MEMBRANE SYSTEM	SQ YD	1185.0
POLYMERIZED H.M.A. SURFACE CSE. MIX D, N-105	TON	138.0
HOT-MIX ASPHALT SHOULDERS, 2"	SQ YD	192.0
DECK SLAB REPAIR (PARTIAL)	SQ YD	173.0
DECK SLAB REPAIR (FULL-DEPTH, TYPE I)	SQ YD	15.0
DECK SLAB REPAIR (FULL-DEPTH, TYPE II)	SQ YD	30.0
SILICONE JOINT SEALER, 1.5"	FOOT	149.0

GENERAL NOTES

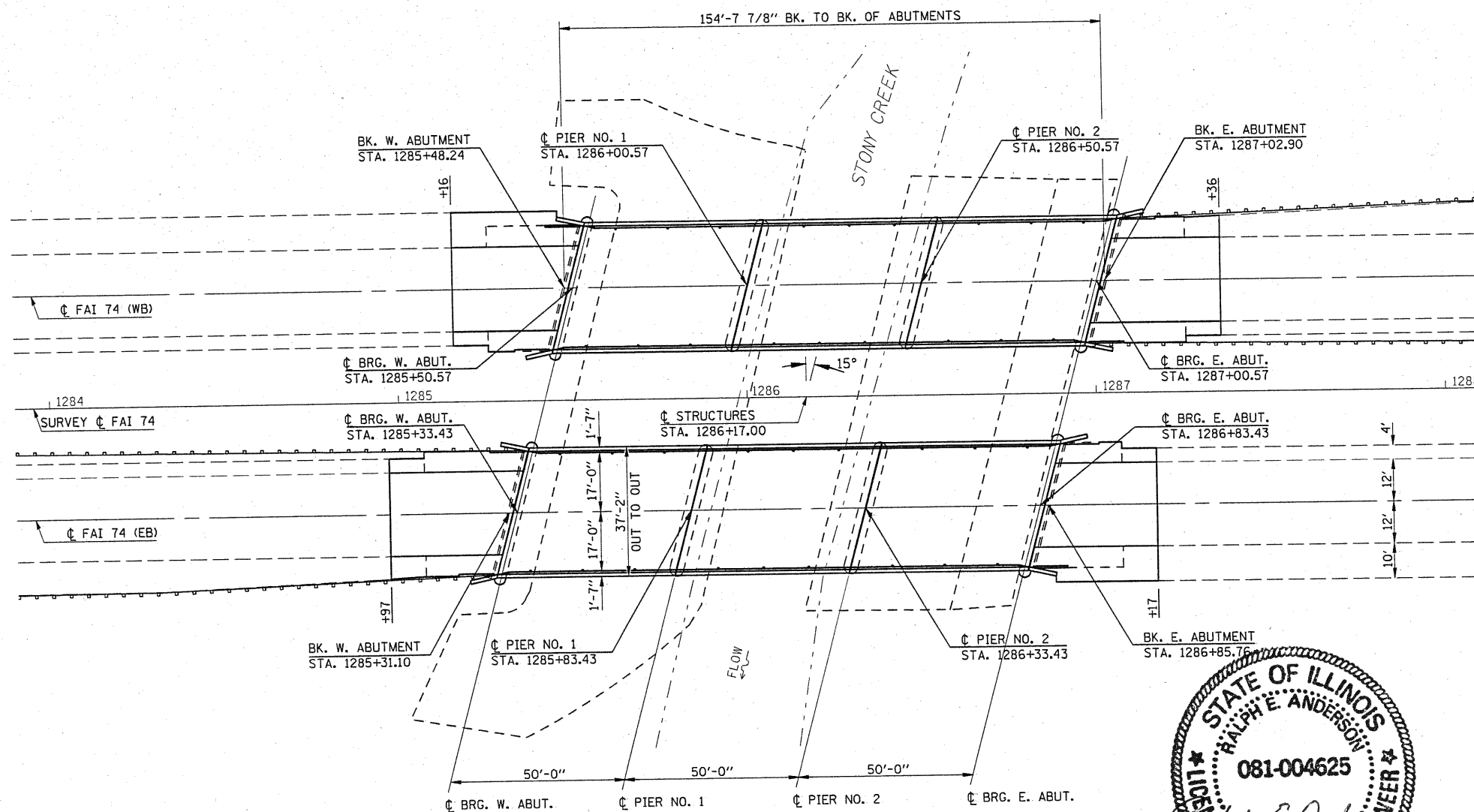
PLAN DIMENSIONS AND DETAILS RELATIVE TO THE EXISTING PLANS ARE SUBJECT TO NOMINAL CONSTRUCTION VARIATIONS. THE CONTRACTOR SHALL FIELD VERIFY EXISTING DIMENSIONS AND DETAILS AFFECTING NEW CONSTRUCTION AND MAKE NECESSARY APPROVED ADJUSTMENTS PRIOR TO CONSTRUCTION OR ORDERING OF MATERIALS. SUCH VARIATIONS SHALL NOT BE CAUSE FOR ADDITIONAL COMPENSATION FOR A CHANGE IN SCOPE OF WORK, HOWEVER, THE CONTRACTOR WILL BE PAID FOR THE QUANTITY ACTUALLY FURNISHED AT THE UNIT PRICE BID FOR THE WORK.

SEE SPECIAL PROVISION "DECK SLAB REPAIR" FOR ADDITIONAL REQUIREMENTS PERTAINING TO DECK SLAB REPAIR AND H.M.A. SURFACE REMOVAL (DECK).

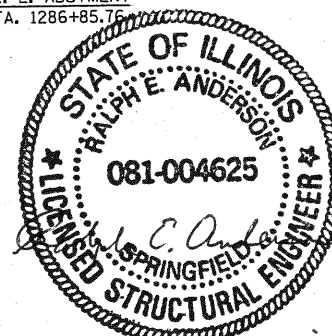
THE EXISTING STRUCTURES HAVE BEEN FOUND TO CONTAIN NO ASBESTOS.



ELEVATION



PLAN

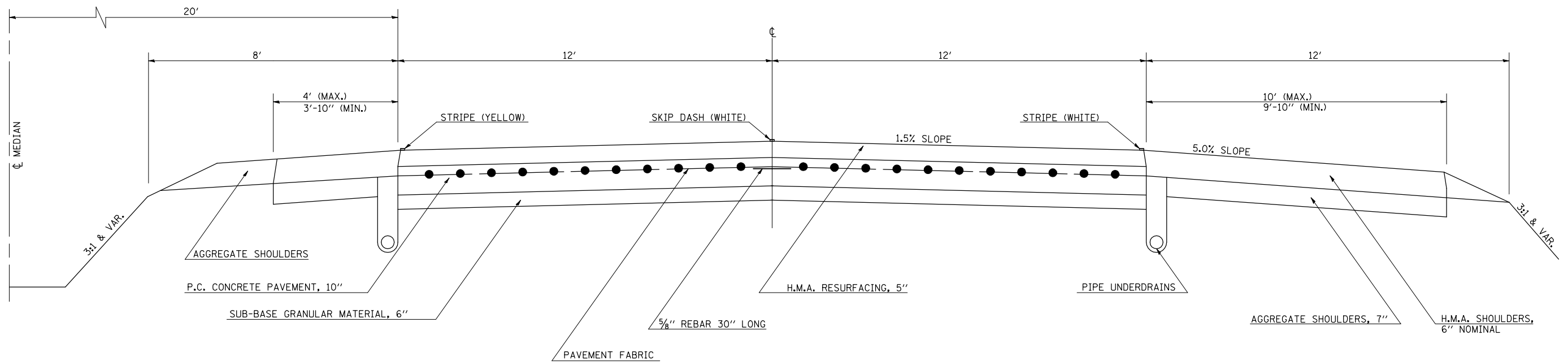


Expires 11/30/2012

FILE NAME =	USER NAME = smsgm	DESIGNED - GMS	REVISED -	STATE OF ILLINOIS DEPARTMENT OF TRANSPORTATION	GENERAL PLAN & ELEVATION S.N. 092-0001 (EB) & 092-0002 (WB)	F.A.I. RTE. 74	SECTION (92-9B)I-1	COUNTY VERMILION	TOTAL SHEETS 15	SHEET NO. 4
ct:\pwork\pwidot\smsgm\d2187665\d5989	3 Bridge Repairs.dgn	DRAWN - GMS	REVISED -	SCALE:	SHEET NO. - OF - SHEETS	FED. ROAD DIST. NO.	ILLINOIS FED. AID PROJECT	CONTRACT NO. 90963		
PLOT SCALE = 48,000' / IN.	CHECKED -	DATE -	REVISED -	STA. TO STA.						
PLOT DATE = 10/18/2010	DATE -	REVISED -	REVISED -							

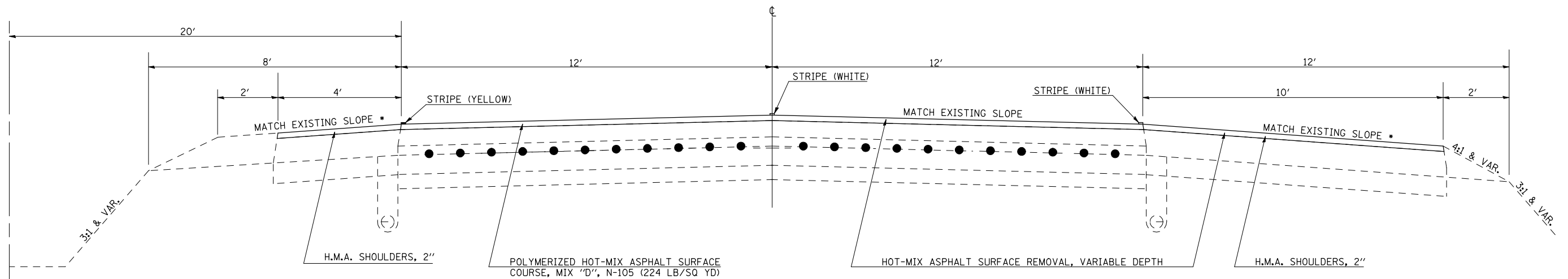
EXISTING TYPICAL ROADWAY CROSS SECTION

EASTBOUND LOOKING EAST, WESTBOUND LOOKING WEST



PROPOSED TYPICAL ROADWAY CROSS SECTION

EASTBOUND LOOKING EAST, WESTBOUND LOOKING WEST

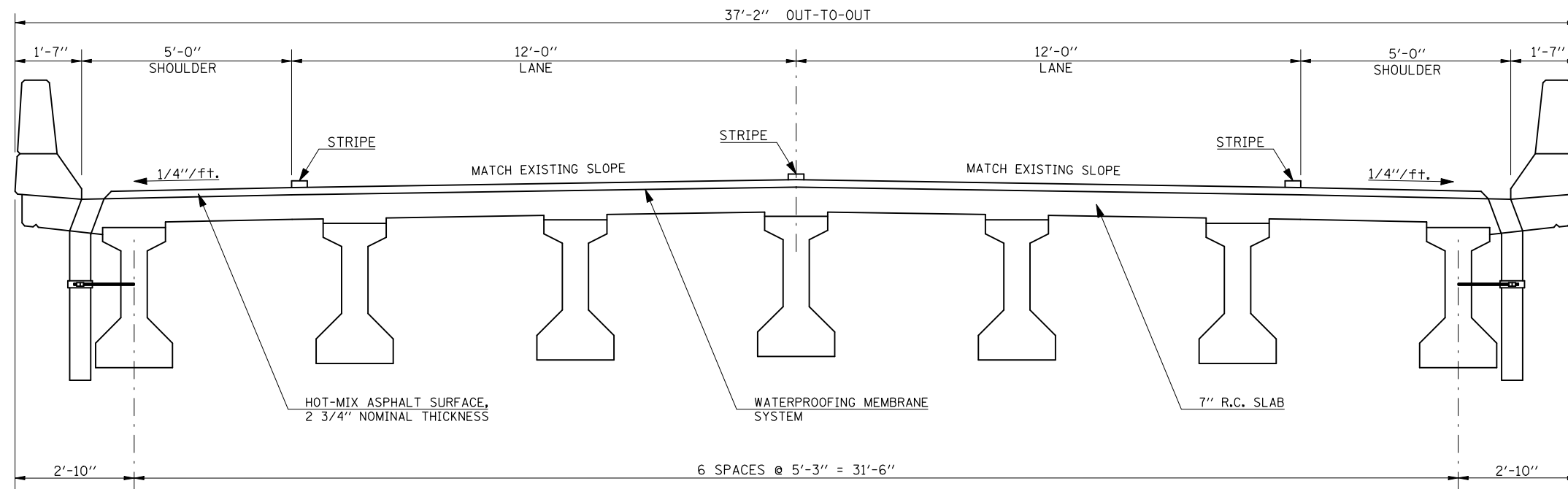


** ALLOWABLE MINIMUM SHOULDER SLOPE = 4.0%
ALLOWABLE MAXIMUM SHOULDER SLOPE = 6.0%

FILE NAME =	USER NAME = s1msgm	DESIGNED - GMS	REVISED -	STATE OF ILLINOIS DEPARTMENT OF TRANSPORTATION	TYPICAL ROADWAY CROSS SECTIONS S.N. 092-0001 (EB) & 092-0002 (WB)		F.A.I. RTE.:	SECTION	COUNTY	TOTAL SHEETS	SHEET NO.
ct:\pw\work\p\dot\s1msgm\0187665\0590963 Bridge Repairs.dgn	DRAWN - GMS	REVISED -	74				(92-9BR)I-1	VERMILION	15	5	
PLOT SCALE = 40.0001' / IN.	CHECKED -	REVISED -	CONTRACT NO. 90963								
PLOT DATE = 10/18/2010	DATE -	REVISED -	SCALE:		SHEET NO. - OF - SHEETS	STA.	TO STA.	FED. ROAD DIST. NO.	ILLINOIS FED. AID PROJECT		

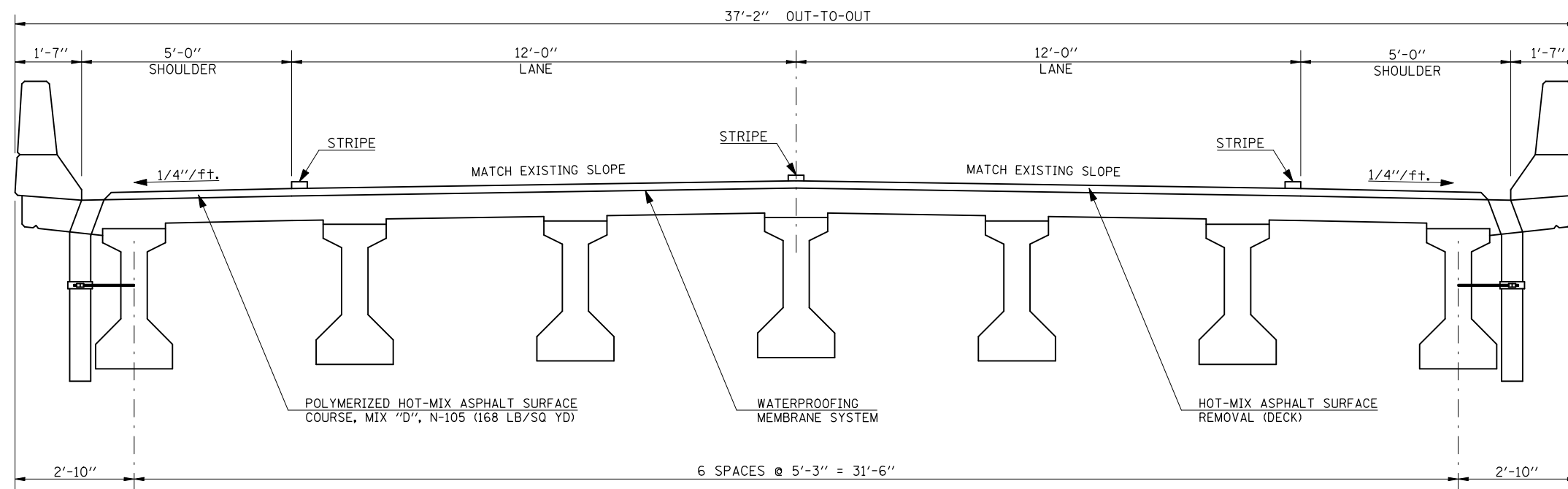
EXISTING DECK CROSS SECTION

EASTBOUND LOOKING EAST, WESTBOUND LOOKING WEST



PROPOSED DECK CROSS SECTION

EASTBOUND LOOKING EAST, WESTBOUND LOOKING WEST



FILE NAME =	USER NAME = s1msgm	DESIGNED - GMS	REVISED -
ct:\pw\work\p1dot\s1msgm\d0187665\d590963 Bridge Repairs.dgn		DRAWN - GMS	REVISED -
	PLOT SCALE = 40.0001' / IN.	CHECKED -	REVISED -
	PLOT DATE = 10/18/2010	DATE -	REVISED -

STATE OF ILLINOIS
DEPARTMENT OF TRANSPORTATION

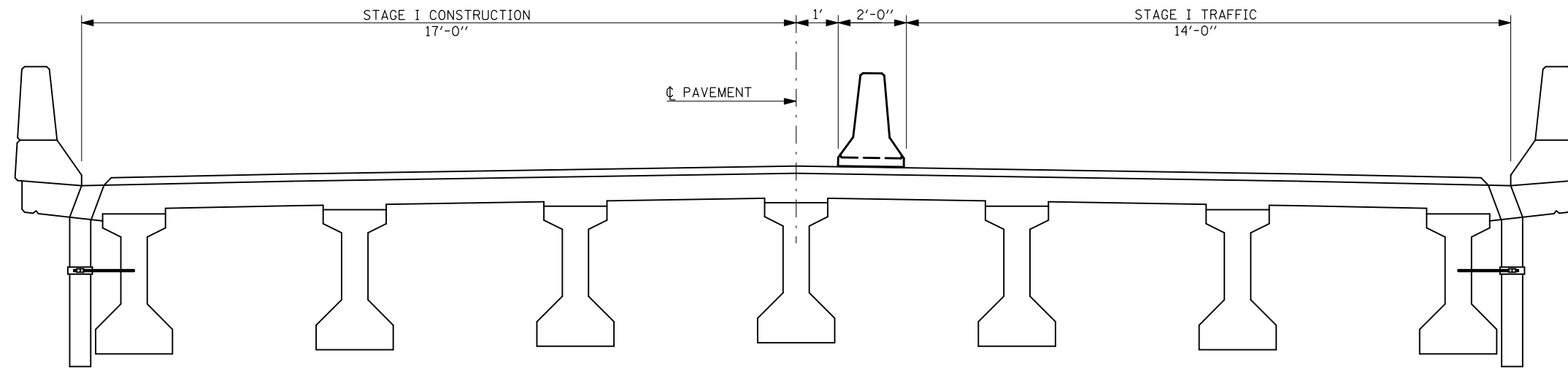
DECK CROSS SECTIONS
S.N. 092-0001 (EB) & 092-0002 (WB)

SCALE: SHEET NO. - OF - SHEETS STA. TO STA.

F.A.I. RTE.	SECTION	COUNTY	TOTAL SHEETS	SHEET NO.
74	(92-9BR)I-1	VERMILION	15	6
CONTRACT NO. 90963				
FED. ROAD DIST. NO. ILLINOIS FED. AID PROJECT				

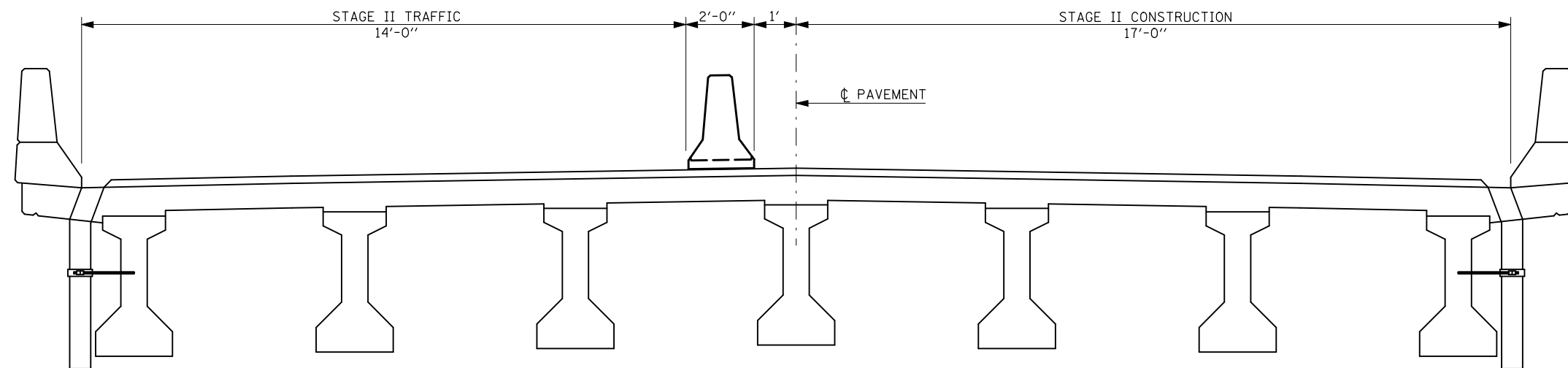
STAGE I

EASTBOUND LOOKING EAST, WESTBOUND LOOKING WEST



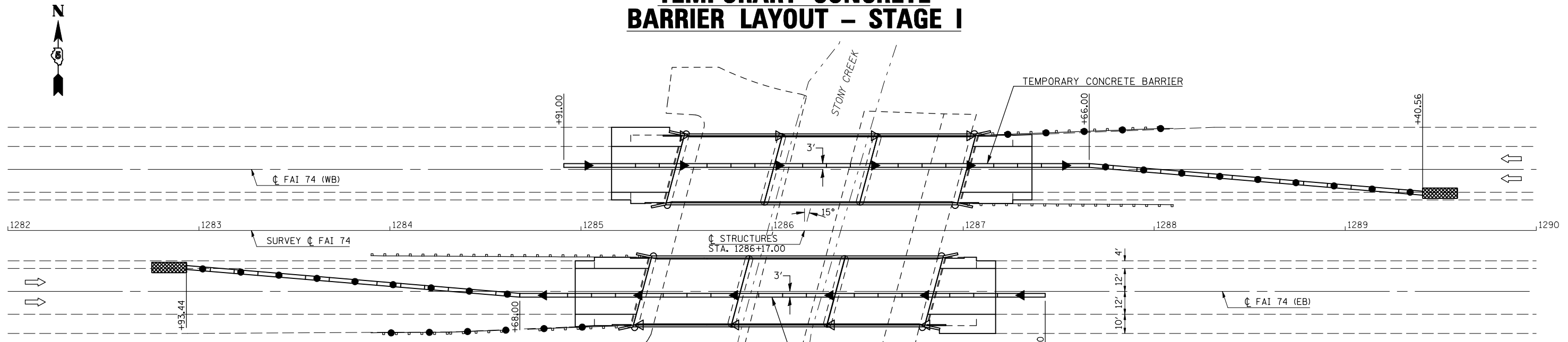
STAGE II

EASTBOUND LOOKING EAST, WESTBOUND LOOKING WEST



FILE NAME =	USER NAME = s1msgm	DESIGNED - GMS	REVISED -	STATE OF ILLINOIS DEPARTMENT OF TRANSPORTATION	STAGE CONSTRUCTION DETAILS S.N. 092-0001 (EB) & 092-0002 (WB)			F.A.I. RTE.	SECTION	COUNTY	TOTAL SHEETS	SHEET NO.
ct:\pw\work\p\dot\s1msgm\d0187665\d590963 Bridge Repairs.dgn		DRAWN - GMS	REVISED -		74	(92-9BR)I-1	VERMILION	15	7			
PLOT SCALE = 40.0001' / IN.		CHECKED -	REVISED -		CONTRACT NO. 90963							
PLOT DATE = 10/18/2010		DATE -	REVISED -		SCALE:	SHEET NO. - OF - SHEETS	STA.	TO STA.	FED. ROAD DIST. NO.	ILLINOIS FED. AID PROJECT		

TEMPORARY CONCRETE BARRIER LAYOUT - STAGE I



PLAN NOTES:

ALL STAGING DETAILS SET UP IN ACCORDANCE WITH TRAFFIC CONTROL AND PROTECTION 701402.

PRIOR TO BARRIER PLACEMENT TRAFFIC CONTROL SHALL BE SET UP IN ACCORDANCE WITH STANDARD 701406.

TRAFFIC CONTROL DETAILS NOT SHOWN ARE TO CONFORM WITH STANDARD 701400 AND 701402.

MESSAGE BOARD SHALL BE PLACED TWO WEEKS PRIOR TO CONSTRUCTION AND MAY BE ADJUSTED TO MEET FIELD CONDITIONS.

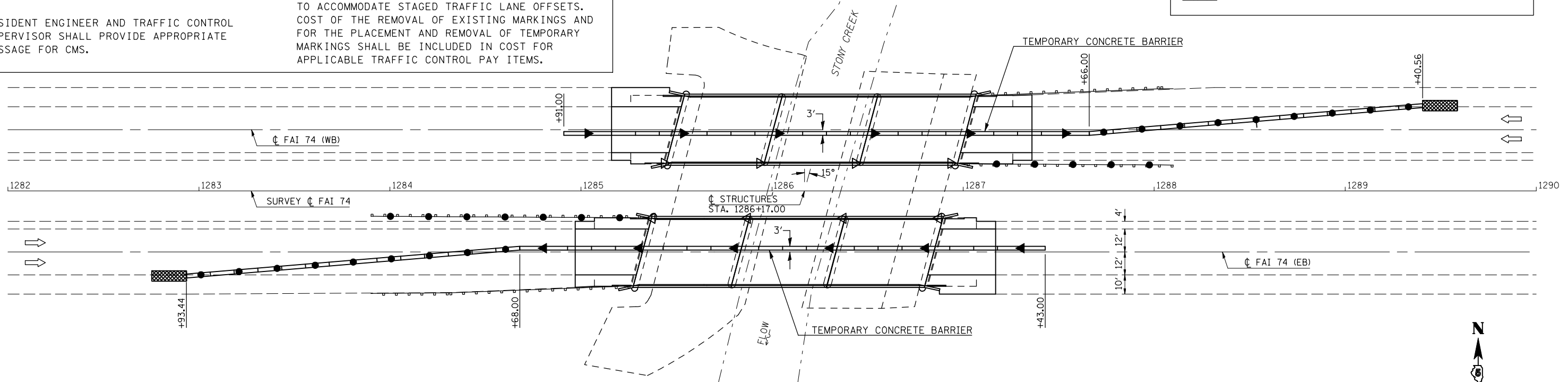
RESIDENT ENGINEER AND TRAFFIC CONTROL SUPERVISOR SHALL PROVIDE APPROPRIATE MESSAGE FOR CMS.

REFLECTORS AND VERTICAL PANELS FOR BARRIER WALL, BRIDGE RAIL AND GUARDRAIL SHALL BE INCLUDED IN THE COST FOR THE APPLICABLE TRAFFIC CONTROL PAY ITEMS.

ATTACH VERTICAL PANELS TO THE GUARDRAIL AT 20 FOOT CENTERS AS SHOWN ON THIS SHEET. THIS COST WILL BE INCIDENTAL TO STANDARD 701402.

REFLECTORIZED TEMPORARY MARKING TAPE SHALL BE PLACED THROUGHOUT THE TAPER AND ALONG-SIDE THE WORK AREA. THE EDGE LINE SHALL BE YELLOW FOR LEFT LANE CLOSURES. ALSO, THE EXISTING PAVEMENT MARKINGS SHALL BE REMOVED TO ACCOMMODATE STAGED TRAFFIC LANE OFFSETS. COST OF THE REMOVAL OF EXISTING MARKINGS AND FOR THE PLACEMENT AND REMOVAL OF TEMPORARY MARKINGS SHALL BE INCLUDED IN COST FOR APPLICABLE TRAFFIC CONTROL PAY ITEMS.

TEMPORARY CONCRETE BARRIER LAYOUT - STAGE II



SYMBOLS	
	AMBER MONODIRECTIONAL REFLECTOR 50' CTS
	CRYSTAL MONODIRECTIONAL REFLECTOR 50' CTS
	TEMPORARY CONCRETE BARRIER
	VERTICAL PANELS WITH STEADY BURNING LIGHTS ALONG TAPER 20' CTS
	IMPACT ATTENUATOR

FILE NAME =	USER NAME = s1msgm	DESIGNED - GMS	REVISED -
ct:\pw\work\p\dot\1\msgm\10187665\1590963 Bridge Repairs.dgn		DRAWN - GMS	REVISED -
	PLOT SCALE = 40.0001' / IN.	CHECKED -	REVISED -
	PLOT DATE = 10/18/2010	DATE -	REVISED -

STATE OF ILLINOIS
DEPARTMENT OF TRANSPORTATION

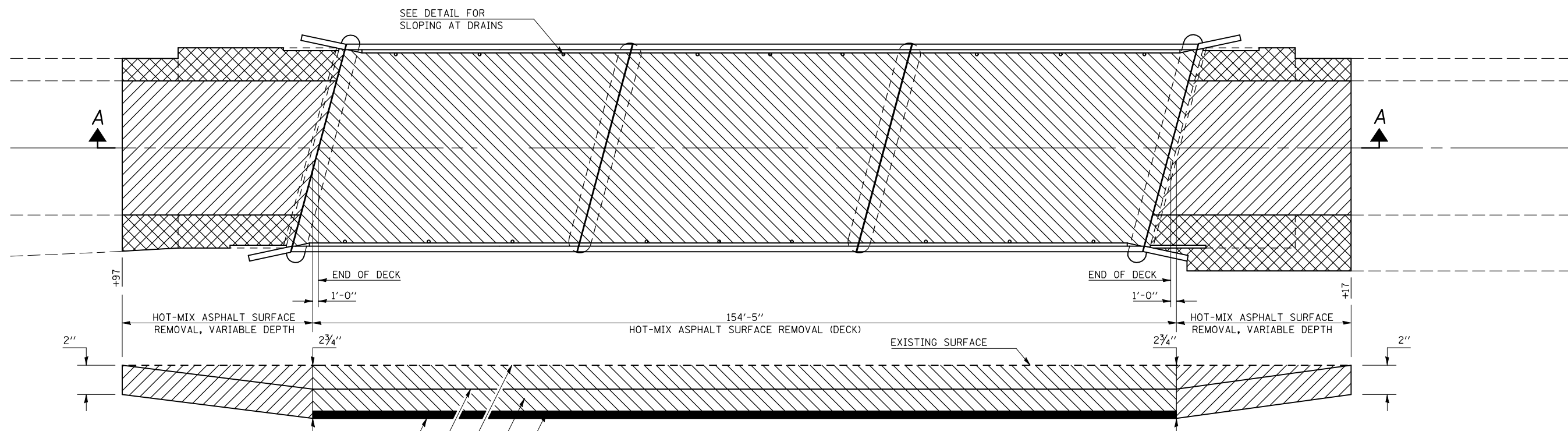
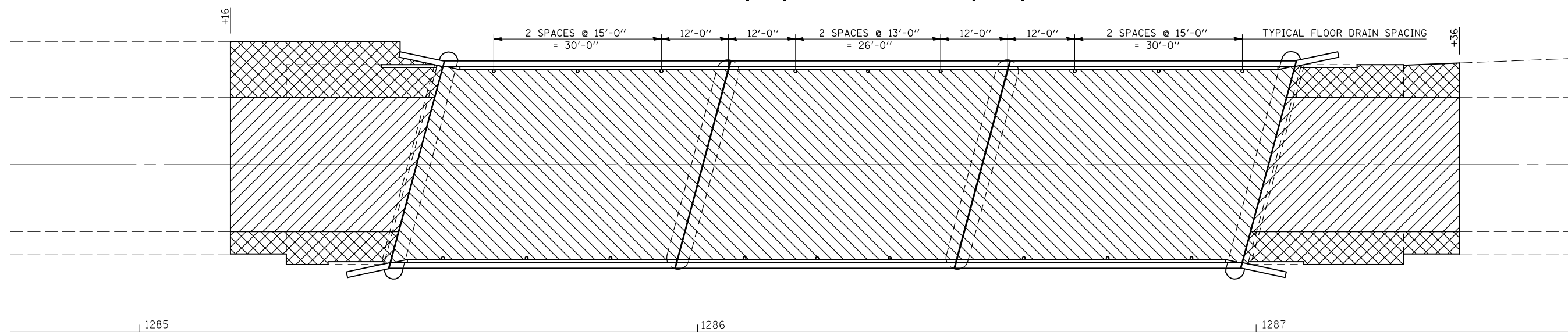
TEMPORARY CONCRETE BARRIER LAYOUT
S.N. 092-0001 (EB) & 092-0002 (WB)

SCALE: SHEET NO. - OF - SHEETS STA. TO STA.

F.A.I. RTE.	SECTION	COUNTY	TOTAL SHEETS	SHEET NO.
74	(92-9BR)I-1	VERMILION	15	8
CONTRACT NO. 90963				
FED. ROAD DIST. NO. ILLINOIS FED. AID PROJECT				

WEARING SURFACE DETAILS

S.N. 092-0001 (EB) & 092-0002 (WB)

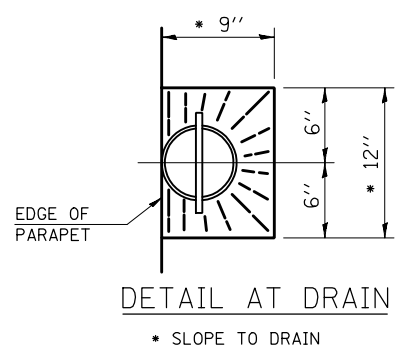


SECTION A-A
(SHOWING DETAIL OF MILLING & RESURFACING)

LEGEND

- H.M.A. SURFACE REMOVAL (DECK) & PROPOSED POLYMERIZED H.M.A. SURFACE CSE., MIX D, N 105 (168 LB/SQ YD) & WATERPROOFING MEMBRANE SYSTEM
- H.M.A. SURFACE REMOVAL, VARIABLE DEPTH & PROPOSED POLYMERIZED H.M.A. SURFACE CSE., MIX D, N 105 (224 LB/SQ YD)
- H.M.A. SURFACE REMOVAL, VARIABLE DEPTH & PROPOSED H.M.A. SHOULDERS, 2"

- PROPOSED WATERPROOFING MEMBRANE SYSTEM
- PROPOSED POLYMERIZED H.M.A. SURFACE CSE., MIX D, N 105 (168 LB/SQ YD)



BILL OF MATERIALS

ITEM	UNIT	TOTAL
H.M.A. SURFACE REMOVAL (DECK)	SQ YD	1167.0
H.M.A. SURFACE REMOVAL, VARIABLE DEPTH	SQ YD	542.0
WATERPROOFING MEMBRANE SYSTEM	SQ YD	1185.0
POLYMERIZED BITUMINOUS MATERIALS (PRIME COAT)	GAL	55.0
POLYMERIZED HOT-MIX ASPHALT SURFACE COURSE, MIX "D", N 105	TON	138.0
HOT-MIX ASPHALT SHOULDERS, 2"	SQ YD	192.0

FILE NAME =	USER NAME = s1smgm	DESIGNED - GMS	REVISED -
ct:\pw\work\p1\dot\smgm\0187665\0590963 Bridge Repairs.dgn		DRAWN - GMS	REVISED -
PLOT SCALE = 40.0001' / IN.		CHECKED -	REVISED -
PLOT DATE = 10/18/2010		DATE -	REVISED -

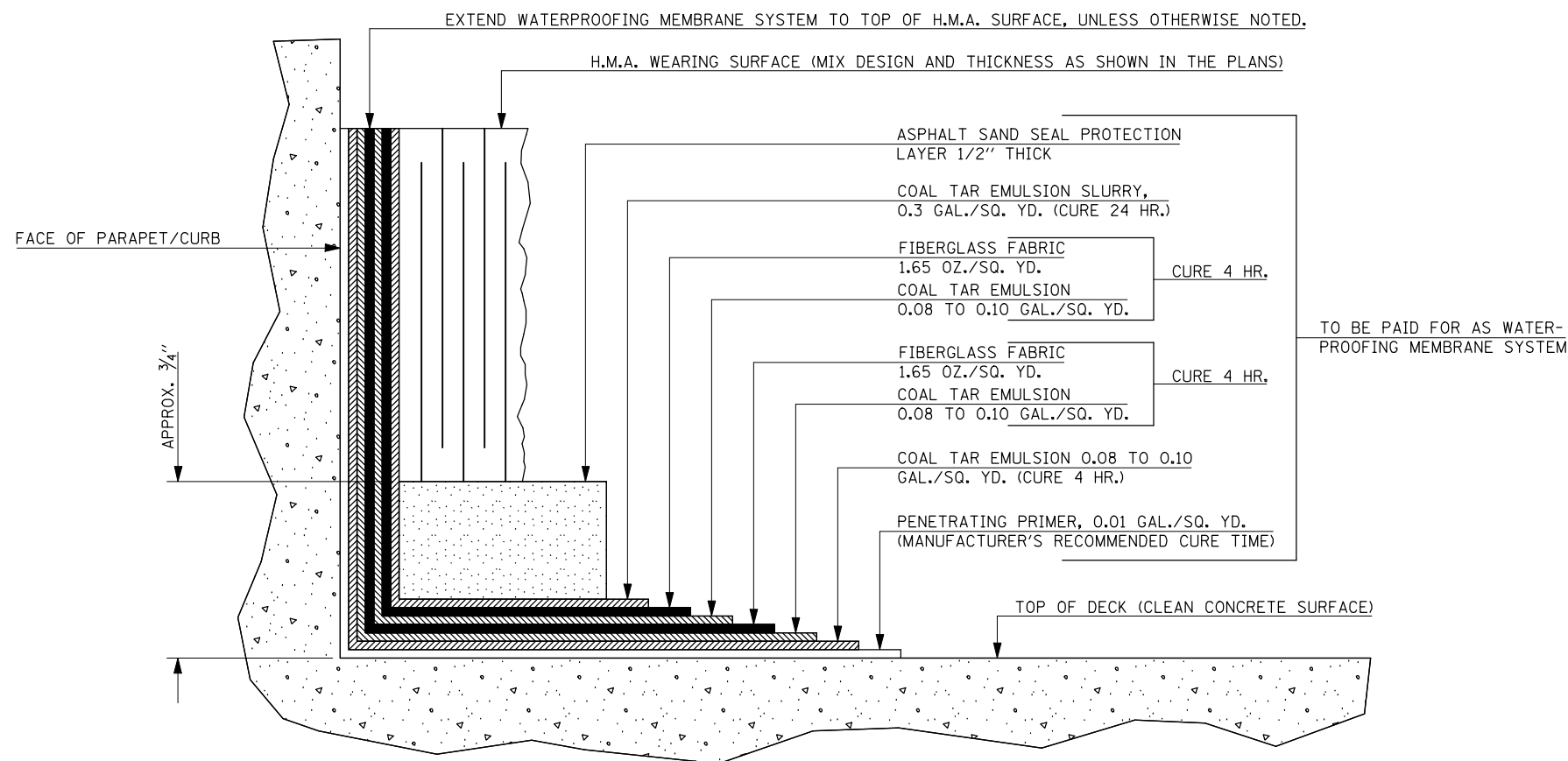
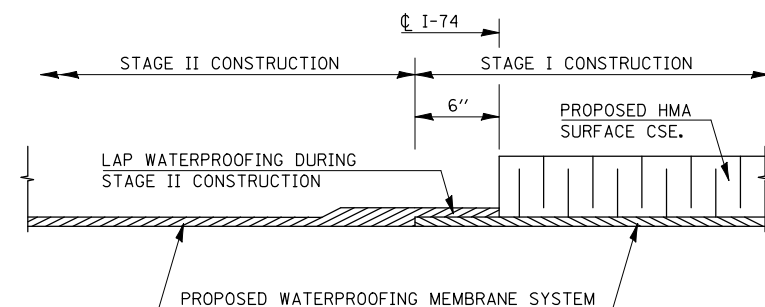
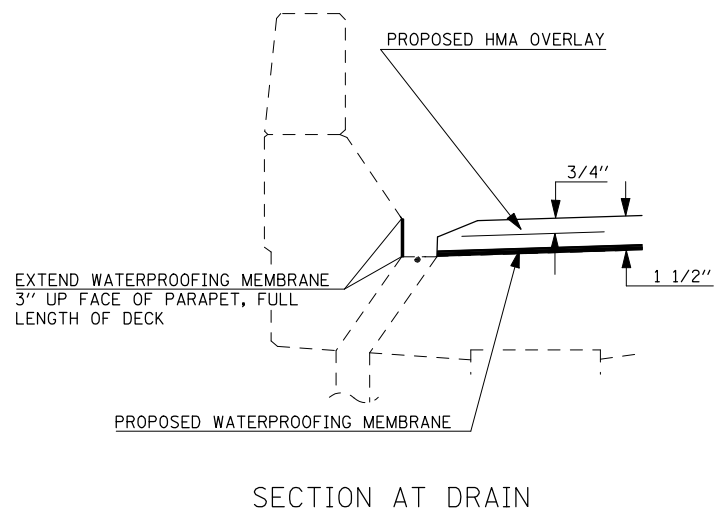
STATE OF ILLINOIS
DEPARTMENT OF TRANSPORTATION

WEARING SURFACE DETAILS			
S.N. 092-0001 (EB) & 092-0002 (WB)			
SCALE:	SHEET NO. - OF - SHEETS	STA.	TO STA.

F.A.I. RTE.:	SECTION	COUNTY	TOTAL SHEETS	SHEET NO.
74	(92-9BR)I-1	VERMILION	15	9
CONTRACT NO. 90963				
FED. ROAD DIST. NO. ILLINOIS FED. AID PROJECT				

WATERPROOFING MEMBRANE SYSTEM DETAILS

S.N. 092-0001 (EB) & 092-0002 (WB)

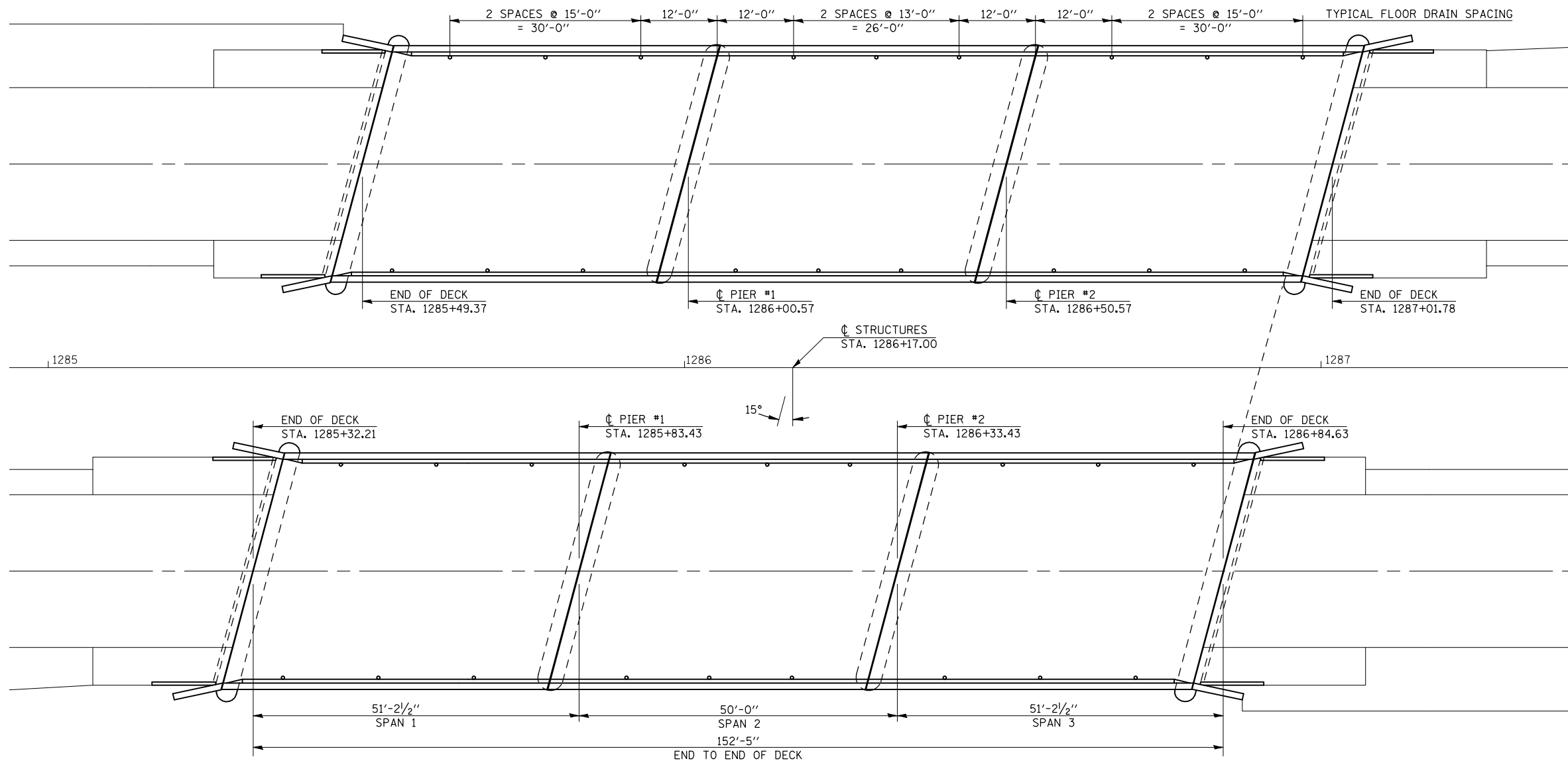


NOTES

THIS DETAIL HAS BEEN INCLUDED TO ILLUSTRATE THE ASSOCIATED LAYERS AND CURE TIMES NECESSARY FOR THE PLACEMENT OF THE WATERPROOFING MEMBRANE SYSTEM. THIS DETAIL SHALL SUPPLEMENT, NOT SUPERSEDE, SECTION 581 OF THE STANDARD SPECIFICATIONS.

FILE NAME =	USER NAME = s1msgm	DESIGNED - GMS	REVISED -	STATE OF ILLINOIS DEPARTMENT OF TRANSPORTATION	WATERPROOFING MEMBRANE SYSTEM DETAILS S.N. 092-0001 (EB) & 092-0002 (WB)	F.A.I. RTE.:	SECTION	COUNTY	TOTAL SHEETS	SHEET NO.
ct:\pw\work\p1dot\1msgm\d0187665\d590963 Bridge Repairs.dgn		DRAWN - GMS	REVISED -			74	(92-9BR)I-1	VERMILION	15	10
PLOT SCALE = 40.0001' / IN.		CHECKED -	REVISED -			CONTRACT NO. 90963				
PLOT DATE = 10/18/2010		DATE -	REVISED -			FED. ROAD DIST. NO.	ILLINOIS FED. AID PROJECT			

AS-BUILT PATCHING PLAN S.N. 092-0001 (EB) & 092-0002 (WB)



NOTES

AREA OF DECK SLAB REPAIR HAS BEEN ESTIMATED. THE ACTUAL QUANTITY AND LOCATIONS SHALL BE DETERMINED BY THE ENGINEER AFTER THE EXISTING H.M.A. WEARING SURFACE AND WATERPROOFING MEMBRANE ARE REMOVED. THE ENGINEER SHALL SHOW THE ACTUAL LOCATIONS OF THE DECK REPAIRS ON THIS SHEET.

CARE SHALL BE TAKEN TO PREVENT DAMAGE TO THE EXISTING FLOOR DRAINS. IF THE EXISTING DRAINS ARE DAMAGED DURING CONSTRUCTION, THE CONTRACTOR WILL BE RESPONSIBLE FOR PROVIDING AND INSTALLING AN APPROVED REPLACEMENT AT NO ADDITIONAL COST TO THE DEPARTMENT.

BILL OF MATERIALS

ITEM	UNIT	TOTAL
DECK SLAB REPAIR (PARTIAL)	SQ YD	173.0
DECK SLAB REPAIR (FULL-DEPTH, TYPE I)	SQ YD	15.0
DECK SLAB REPAIR (FULL-DEPTH, TYPE II)	SQ YD	30.0

FILE NAME =	USER NAME = s1msgm	DESIGNED - GMS	REVISED -
ct:\pw\work\p1\dot\s1msgm\10187665\d590963 Bridge Repairs.dgn		DRAWN - GMS	REVISED -
	PLOT SCALE = 40.0001' / IN.	CHECKED -	REVISED -
	PLOT DATE = 10/18/2010	DATE -	REVISED -

**STATE OF ILLINOIS
DEPARTMENT OF TRANSPORTATION**

**AS-BUILT PATCHING PLAN
S.N. 092-0001 (EB) & 092-0002 (WB)**

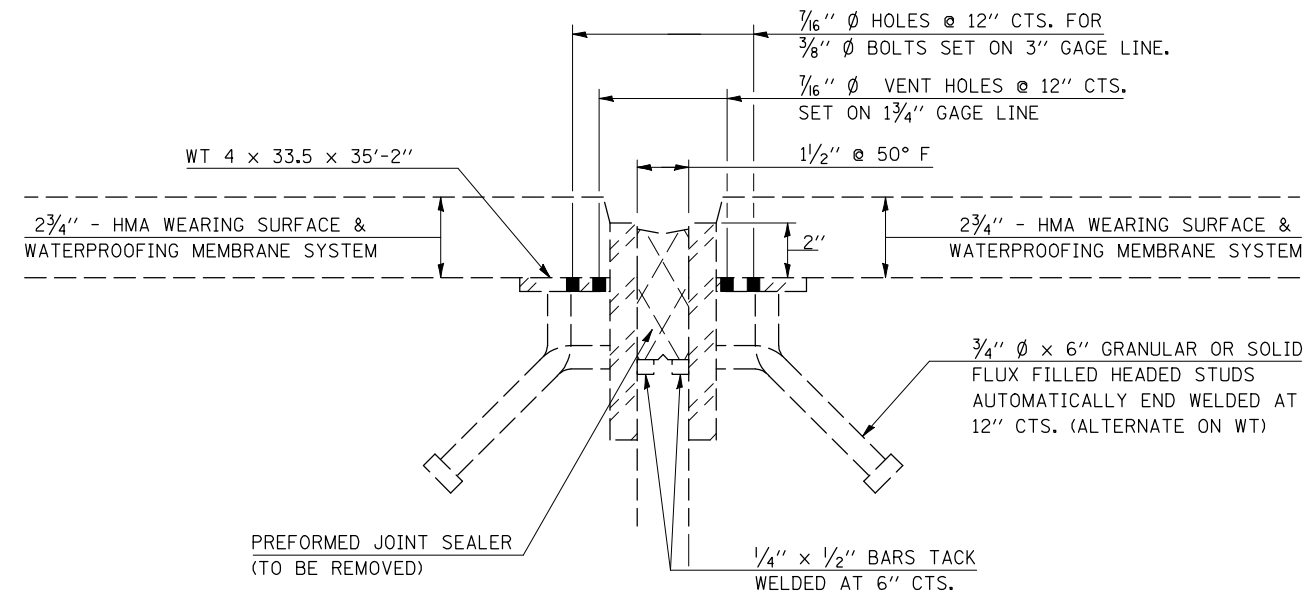
SCALE: SHEET NO. - OF - SHEETS STA. TO STA.

F.A.I. RTE.	SECTION	COUNTY	TOTAL SHEETS	SHEET NO.
74	(92-9BR)I-1	VERMILION	15	11
FED. ROAD DIST. NO.			ILLINOIS FED. AID PROJECT	
			CONTRACT NO. 90963	

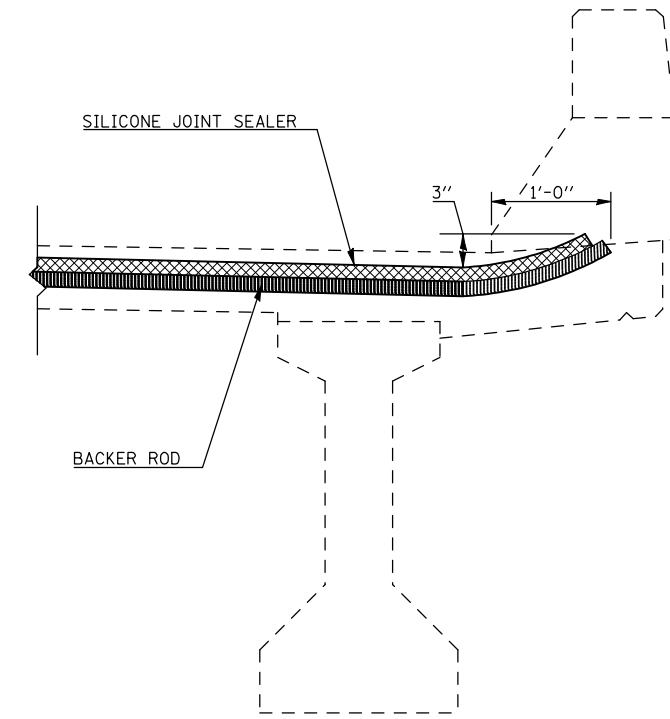
JOINT REPAIR DETAILS

S.N. 092-0001 (EB) & 092-0002 (WB)

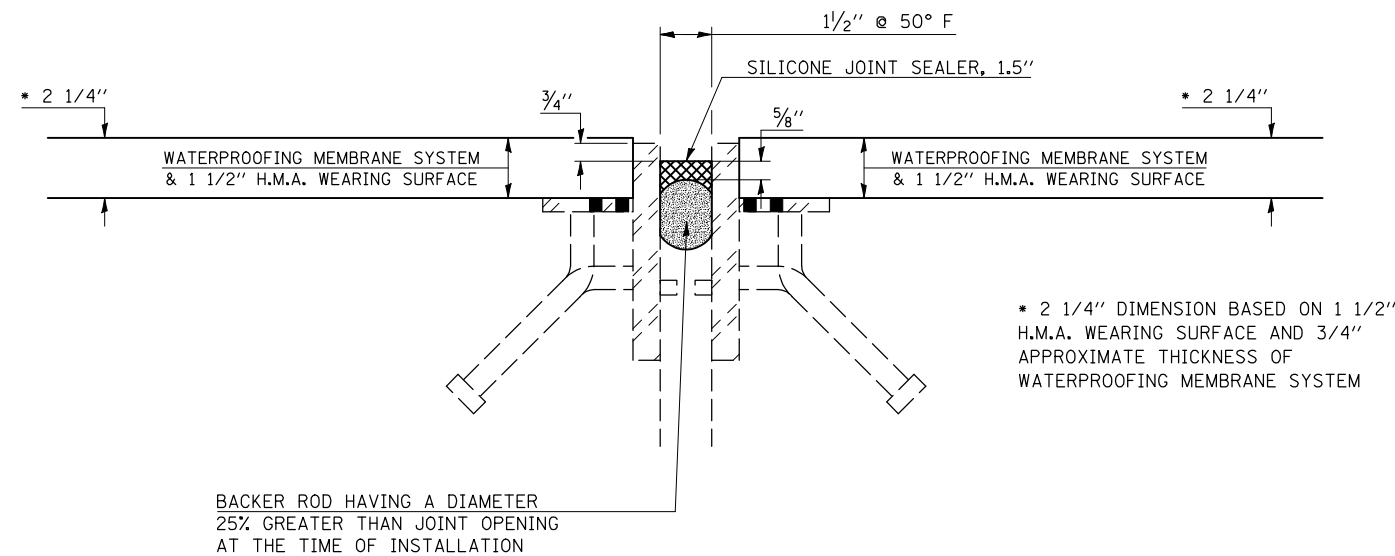
(EXPANSION JOINTS OVER PIERS)



SECTION AT EXISTING JOINT



SECTION AT PARAPET
SILICONE JOINT SEALER



SECTION AT PROPOSED JOINT

NOTES

THE EXISTING PREFORMED JOINT SEALS SHALL BE REMOVED AND THE STEEL JOINT ARMOR SHALL BE CLEANED PRIOR TO THE INTALLATION OF THE PROPOSED SILICONE JOINT SEALER. COST INCLUDED WITH SILICONE JOINT SEALER, 1.5"

BILL OF MATERIALS - TWO STRUCTURES

ITEM	UNIT	TOTAL
SILICONE JOINT SEALER, 1.5"	FOOT	149.0

FILE NAME =	USER NAME = s1msgm	DESIGNED - GMS	REVISED -
ct:\pw\work\p1\dot\s1msgm\d0187665\d590963	Bridge Repairs.dgn	DRAWN - GMS	REVISED -
	PLOT SCALE = 40.0001' / IN.	CHECKED -	REVISED -
	PLOT DATE = 10/18/2010	DATE -	REVISED -

**STATE OF ILLINOIS
DEPARTMENT OF TRANSPORTATION**

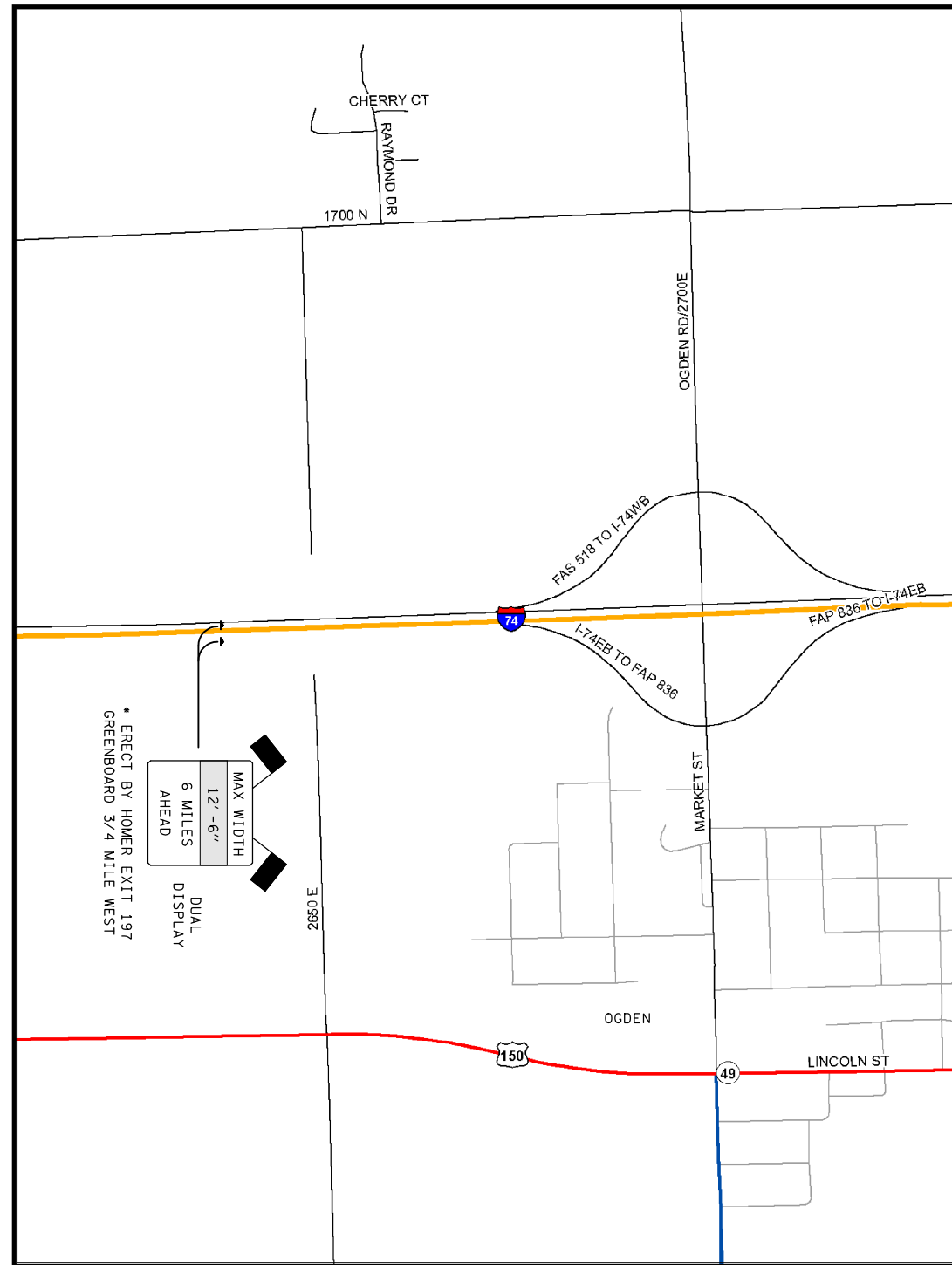
**JOINT REPAIR DETAILS
S.N. 092-0001 (EB) & 092-0002 (WB)**

SCALE: SHEET NO. - OF - SHEETS STA. TO STA.

F.A.I. RTE.	SECTION	COUNTY	TOTAL SHEETS	SHEET NO.
74	(92-9BR)I-1	VERMILION	15	12
CONTRACT NO. 90963				
FED. ROAD DIST. NO. ILLINOIS FED. AID PROJECT				

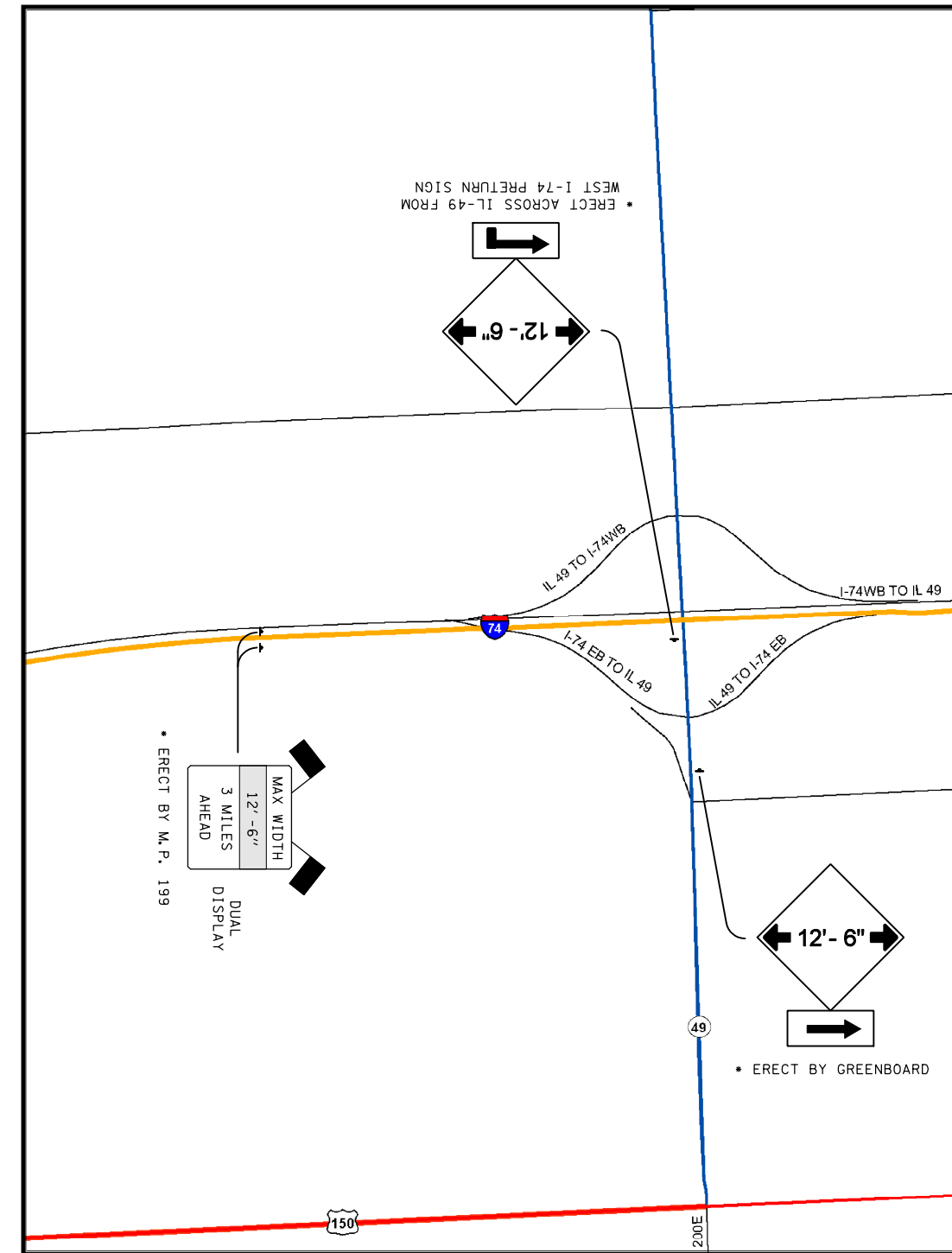
WIDTH RESTRICTION SIGNING DETAILS LOCATIONS 1 & 2

LOCATION 1



I-74 AT ODGEN INTERCHANGE

LOCATION 2



I-74 AT IL-49 NORTH
(FITHIAN INTERCHANGE)

FILE NAME =	USER NAME = s1msgm	DESIGNED - CNP	REVISED -
ct:\pw\work\p1dot\1msgm\d0187665\d590963	Bridge Repairs.dgn	DRAWN - GMS	REVISED -
	PLOT SCALE = 40.0001' / IN.	CHECKED -	REVISED -
	PLOT DATE = 10/18/2010	DATE -	REVISED -

**STATE OF ILLINOIS
DEPARTMENT OF TRANSPORTATION**

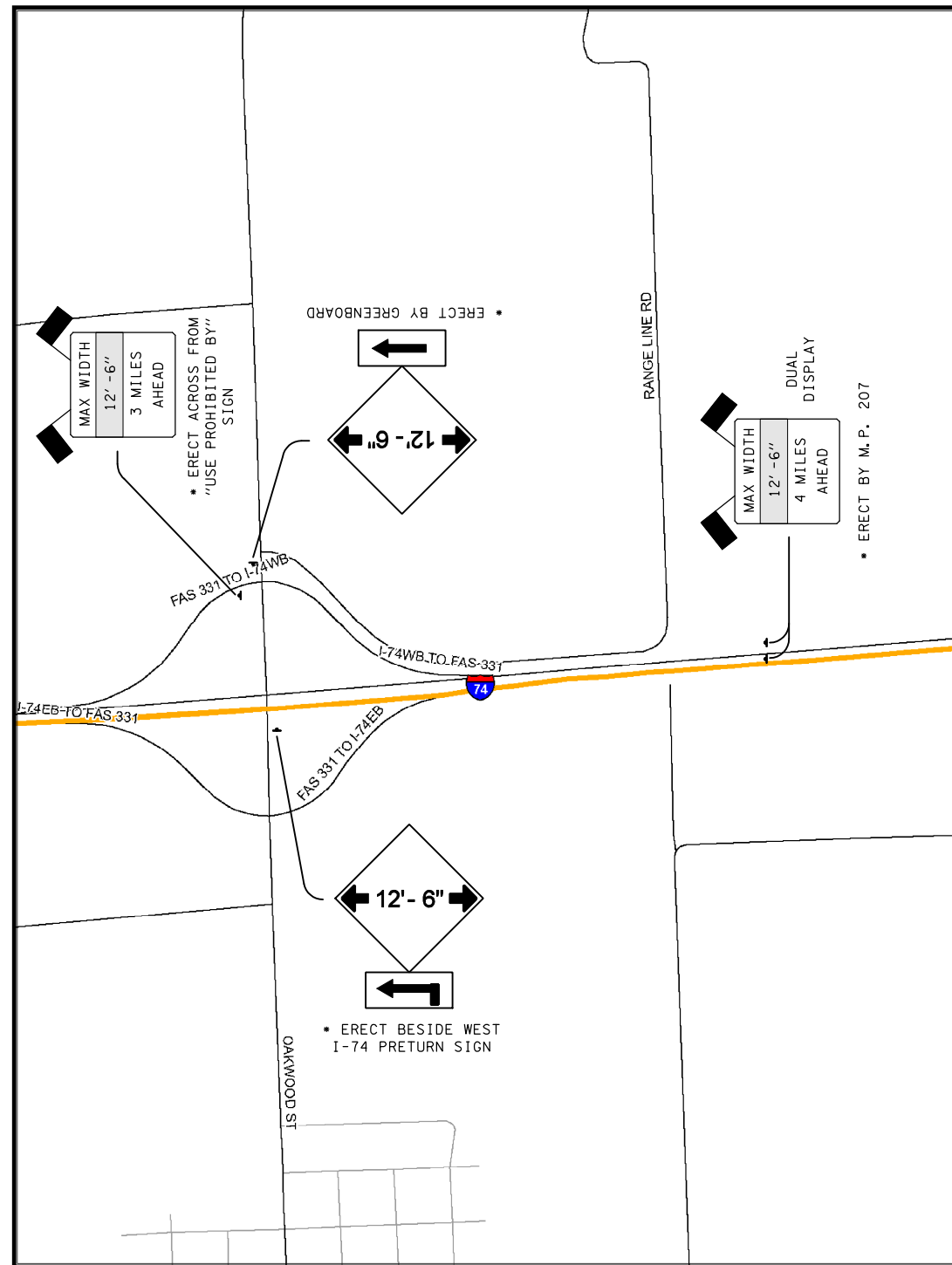
**WIDTH RESTRICTION SIGNING DETAILS
LOCATIONS 1 & 2**

SCALE: SHEET NO. - OF - SHEETS STA. TO STA.

F.A.I. RTE.	SECTION	COUNTY	TOTAL SHEETS	SHEET NO.
74	(92-9BR)I-1	VERMILION	15	13
CONTRACT NO. 90963				
FED. ROAD DIST. NO. ILLINOIS FED. AID PROJECT				

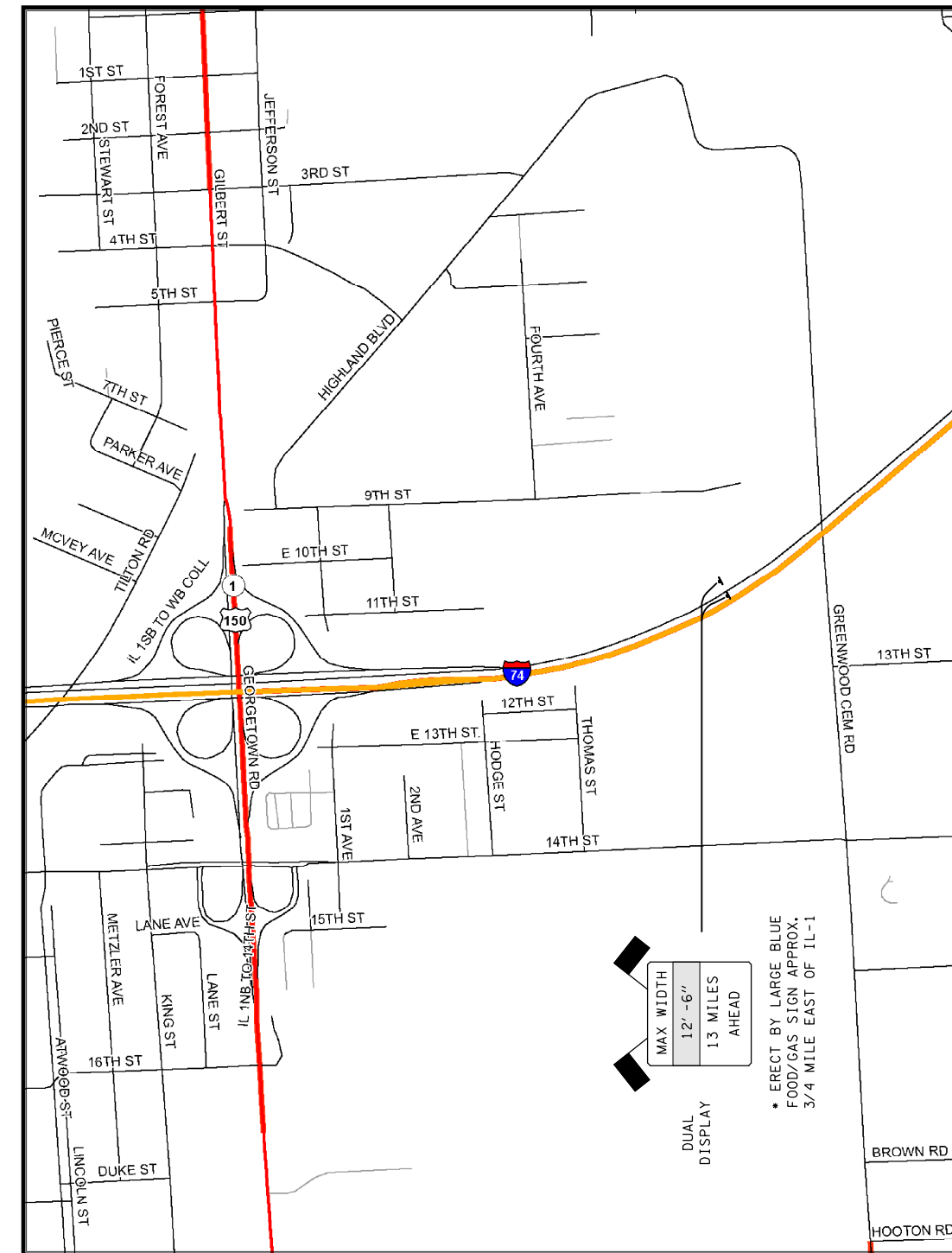
WIDTH RESTRICTION SIGNING DETAILS LOCATIONS 3 & 4

LOCATION 3



I-74 AT OAKWOOD INTERCHANGE

LOCATION 4



I-74 IN DANVILLE
3/4 MILE EAST OF IL-1

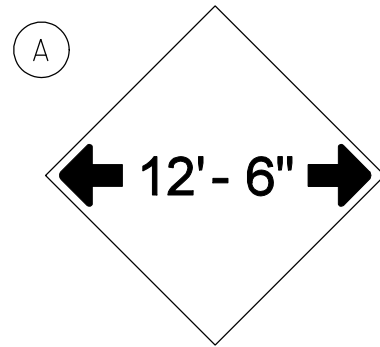
FILE NAME =	USER NAME = s1smgm	DESIGNED - CNP	REVISED -
ct:\pw\work\p1dot\smgm\d0187665\d590963	Bridge Repairs.dgn	DRAWN - GMS	REVISED -
	PLOT SCALE = 40.0001' / IN.	CHECKED -	REVISED -
	PLOT DATE = 10/18/2010	DATE -	REVISED -

**STATE OF ILLINOIS
DEPARTMENT OF TRANSPORTATION**

**WIDTH RESTRICTION SIGNING DETAILS
LOCATIONS 3 & 4**

SCALE: SHEET NO. - OF - SHEETS STA. TO STA.

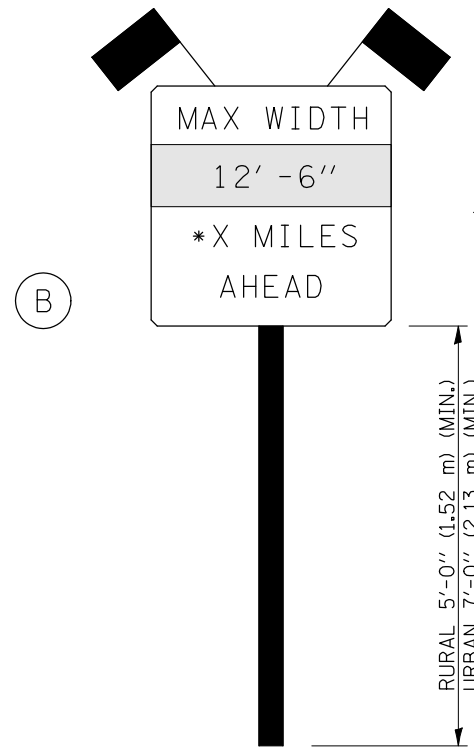
F.A.I. RTE.	SECTION	COUNTY	TOTAL SHEETS	SHEET NO.
74	(92-9BR)I-1	VERMILION	15	14
CONTRACT NO. 90963				
FED. ROAD DIST. NO. ILLINOIS FED. AID PROJECT				



W12-2(0)-48"x48"(1200x1200)

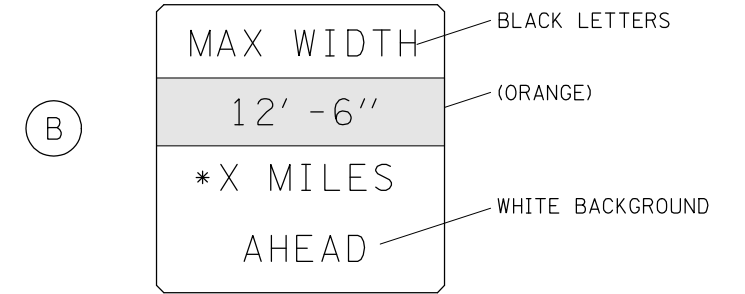
SIGN (A) 4 SIGNS - W12-2(0)-48"x48"(1200x1200) ARE TO BE PLACED AS SHOWN ON SHEETS 13 AND 14 OR AS DIRECTED BY THE ENGINEER.

SIGN (B) 5 SIGNS - (SIGN PANEL, TYPE II) AS SHOWN ARE TO BE PLACED AS SHOWN ON SHEETS 13 & 14 OR AS DIRECTED BY THE ENGINEER.



* - DISTANCES SHALL BE DISPLAYED AS SHOWN ON SHEETS 13 & 14 FOR THE VARIOUS LOCATIONS

SIGN PANEL, TYPE II



W12-I103(0)-48"x48"(1200x1200)
"D" LETTERS/NUMBERS

GENERAL NOTES

1. ALL TRAFFIC CONTROL DEVICES SHALL BE FURNISHED, ERECTED AND MAINTAINED BY THE CONTRACTOR.
2. ALL (B) SIGNS SHALL HAVE FLAGS INSTALLED UNLESS OTHERWISE DIRECTED.
3. LOCATIONS OF TRAFFIC CONTROL DEVICES MAY BE ADJUSTED BY THE ENGINEER.
4. ALL TRAFFIC CONTROL SHOWN ON THIS SHEET SHALL BE PAID FOR AT THE CONTRACT LUMP SUM PRICE FOR WIDTH RESTRICTION SIGNING.
5. ALL SIGNS SHALL BE POST MOUNTED UNLESS OTHERWISE DIRECTED.
6. ALL SIGNS SHOWN ORANGE (O) SHALL BE FLUORESCENT ORANGE.

Note: All dimensions are in INCHES (millimeters) unless otherwise shown.

DISTRICT 5 DETAIL NO. X7200201

FILE NAME =	USER NAME = s1msgm	DESIGNED -	REVISED - 11/06
ct:\pw\work\p1dot\1msgm\d0187665\d590963	Bridge Repairs.dgn	DRAWN -	REVISED - 05/08
	PLOT SCALE = 40.0001' / IN.	CHECKED -	REVISED - 10/08 - KJT
	PLOT DATE = 10/18/2010	DATE -	REVISED - 7/09 - KJT

**STATE OF ILLINOIS
DEPARTMENT OF TRANSPORTATION**

WIDTH RESTRICTION SIGNING

SCALE: SHEET NO. OF SHEETS STA. TO STA.

F.A.I. RTE.	SECTION	COUNTY	TOTAL SHEETS	SHEET NO.
74	(92-9BR)I-1	VERMILION	15	15
FED. ROAD DIST. NO.			ILLINOIS FED. AID PROJECT	
			CONTRACT NO. 90963	