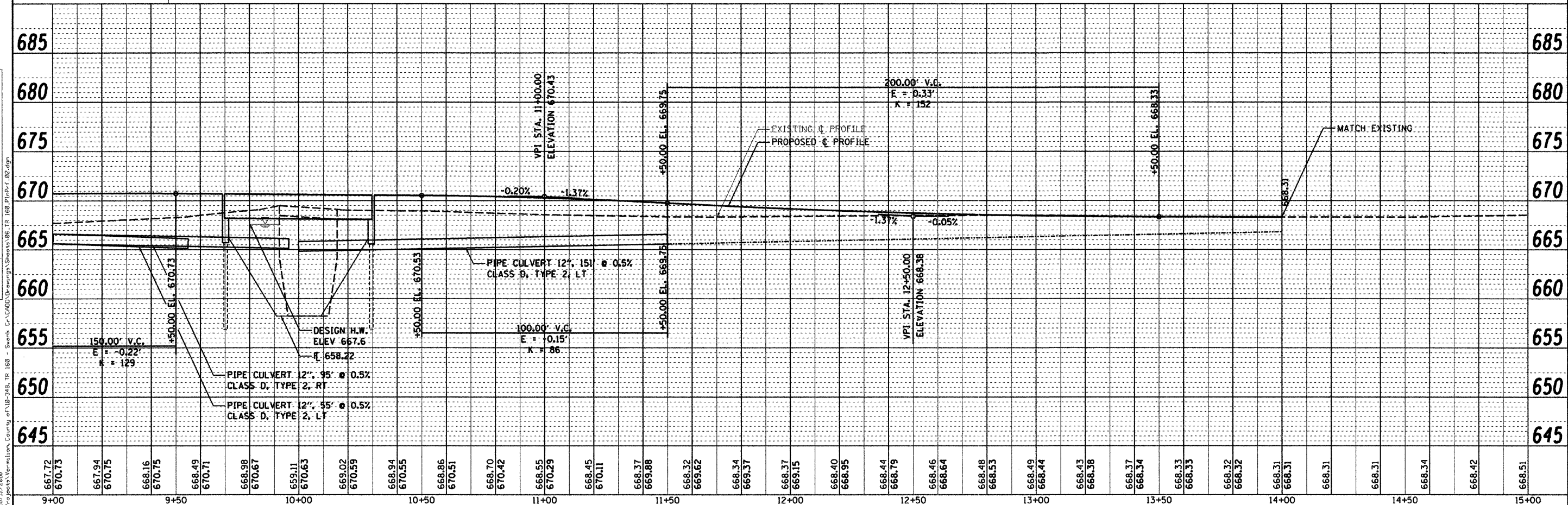
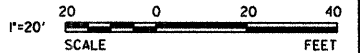
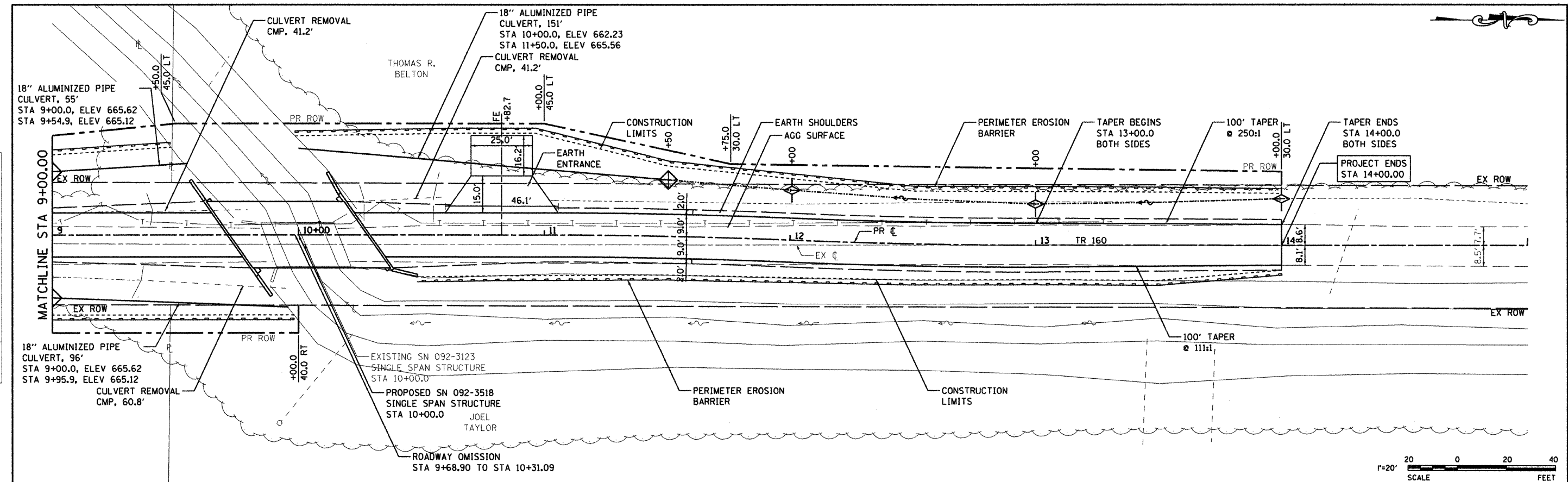


DATE	
BY	
PLAN	
SURVEYED	
ALIGNED	
CHECKED	
NO. OF PAGES	
NO. OF SHEETS	
NO. OF FIGS.	
NO. OF PAGES	
NO. OF SHEETS	
NO. OF FIGS.	

DATE	
BY	
PROFILE	
SURVEYED	
GRADES CHECKED	
NO. OF PAGES	
NO. OF SHEETS	
NO. OF FIGS.	
NO. OF PAGES	
NO. OF SHEETS	
NO. OF FIGS.	



PRINTED DATE: 10/12/2010
 FILE NAME: N:\Projects\Vermillion, County of IL\18-246, TR 160 - Swank Cr\CRD\Drawings\Sheets\18-246_PlanPrf_02.dgn

ESI
 ESI CONSULTANTS, LTD.
 ESRI, Autodesk, Bentley, MicroStation

DESIGNED -	JEH	REVISIONS	
DRAWN -	JEH	REVISIONS	
CHECKED -	PAT	REVISIONS	
DATE -	09-20-2010	REVISIONS	

STATE OF ILLINOIS
DEPARTMENT OF TRANSPORTATION

PLAN & PROFILE
TR 160 OVER SWANK CREEK

SCALE: 1"=20' SHEET NO. 2 OF 2 SHEETS STA. 9+00.00 TO STA. 14+00.00

T.R.	SECTION	COUNTY	TOTAL SHEETS	SHEET NO.
160	09-09123-00-BR	VERMILION	19	6
CONTRACT NO. 91437			ILLINOIS FED. AID PROJECT	