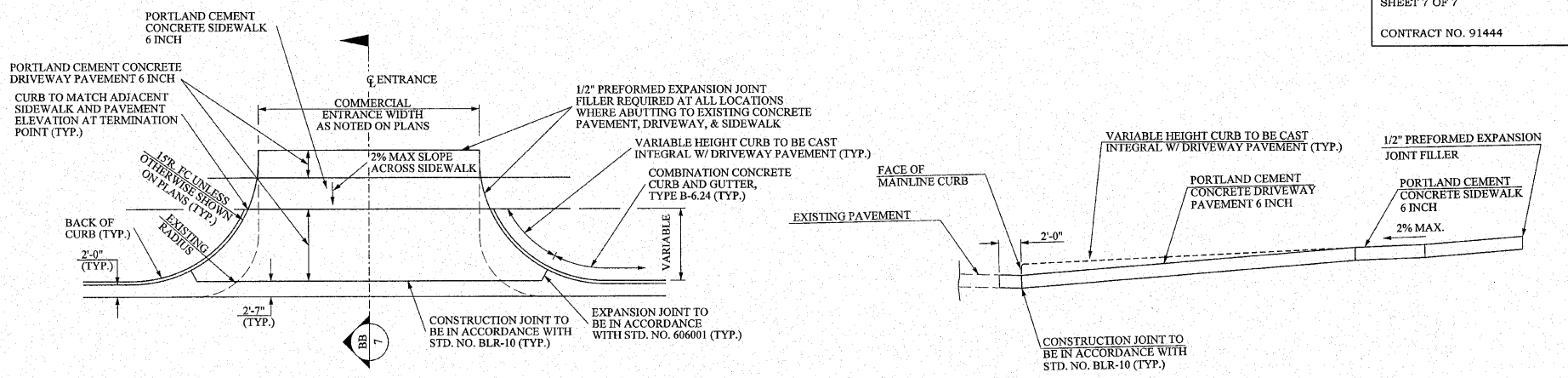
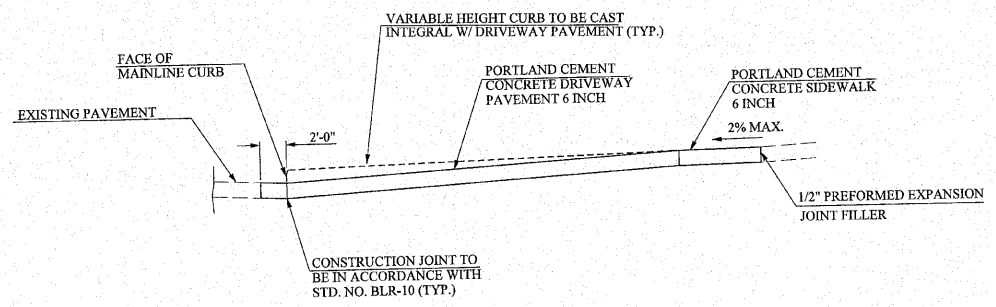


DETAIL OF COMMERCIAL/ ALLEY ENTRANCES WITH NEW SIDEWALK

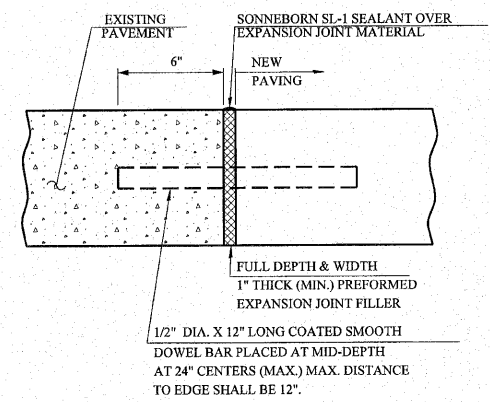


DETAIL OF COMMERCIAL/ ALLEY ENTRANCES WITH NEW PAVEMENT BEHIND NEW SIDEWALK

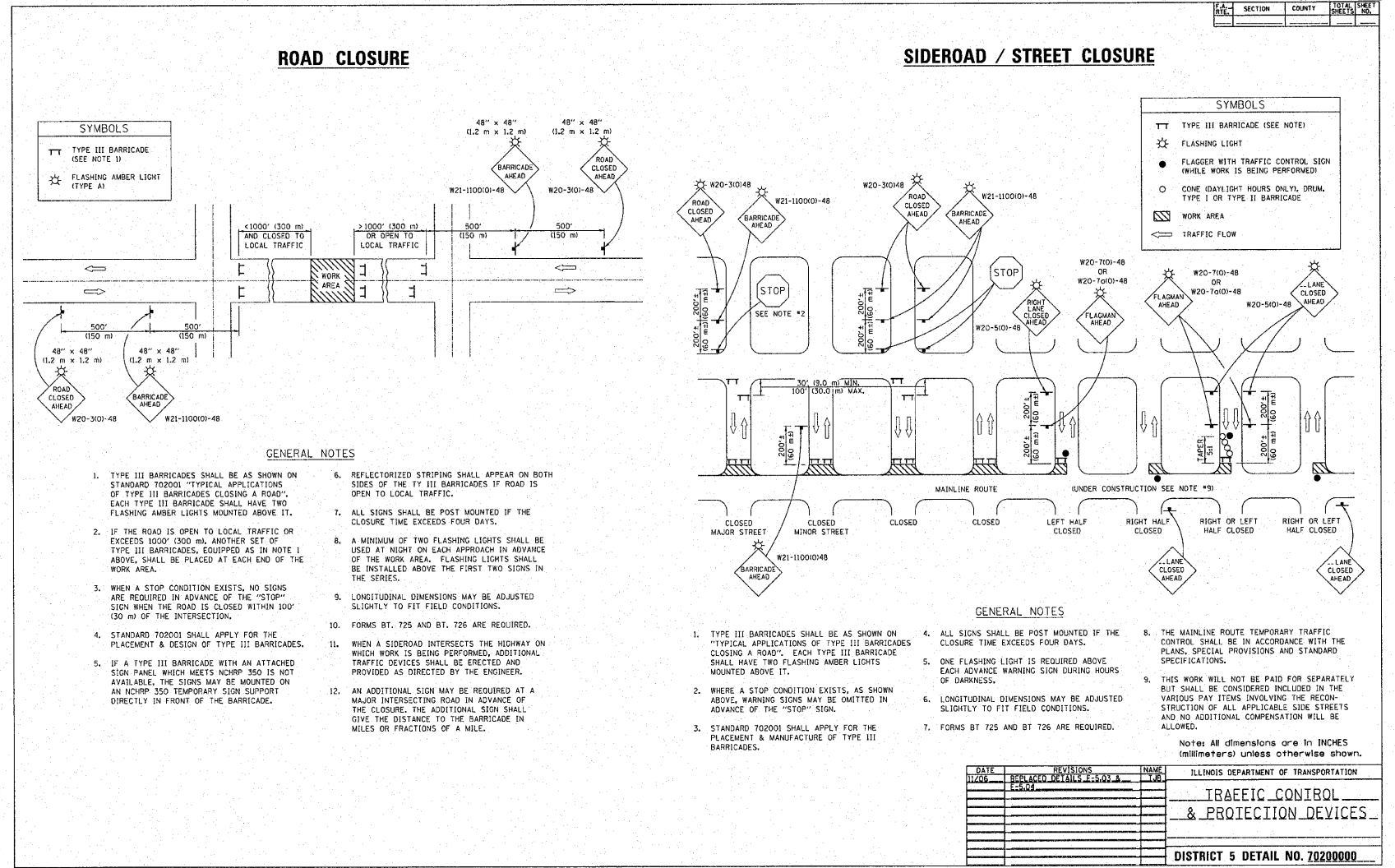
COMMERCIAL/ ALLEY ENTRANCES SECTION WITH NEW PAVEMENT BEHIND NEW SIDEWALK N.T.S.



COMMERCIAL/ ALLEY ENTRANCES SECTION WITH NEW SIDEWALK N.T.S.



SIDEWALK EXPANSION JOINT SECTION N.T.S.



DATE	REVISIONS	NAME	TITLE
11/20/09	REPLACED DETAILS 2-503 & 2-202		

ILLINOIS DEPARTMENT OF TRANSPORTATION
TRAFFIC CONTROL & PROTECTION DEVICES
DISTRICT 5 DETAIL NO. 70200000

FRANCIS ASSOCIATES
CONSULTING ENGINEERS
LAND SURVEYORS
330 NORTH CENTRAL AVENUE
PARIS, ILLINOIS 61944
PH. (217) 465-5306
PROFESSIONAL DESIGN FIRM #184-001406

SCALE	DRAWN	DATE
N/A	TLT	8/20/10
	CHECKED	
	APPROVED	
	DATE	
	REVISION	
	DATE	

FRANCIS ASSOC.
FILE NO.
P-414

MISCELLANEOUS DETAILS SHEET
DOWNTOWN SIDEWALK IMPROVEMENTS - PHASE 2
CITY OF PARIS, ILLINOIS, EDGAR COUNTY
SHEET NO. **7**
OF SHEETS