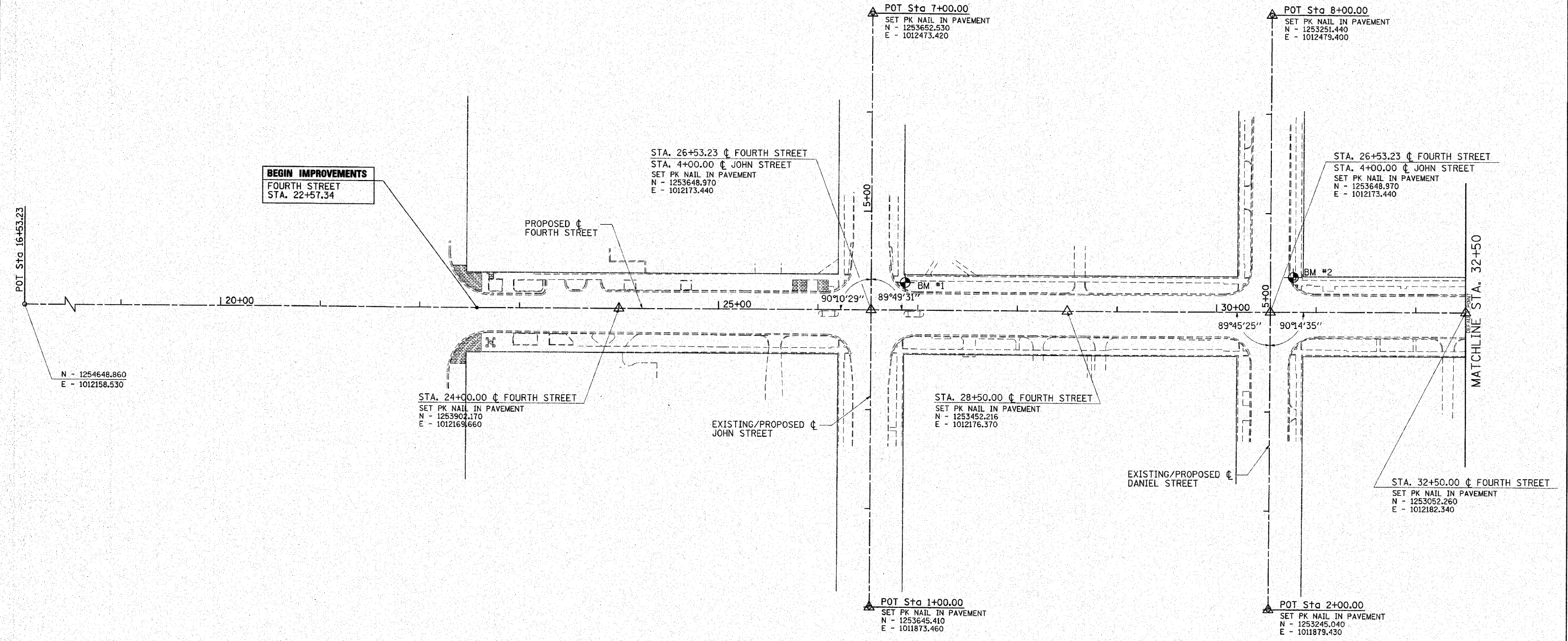
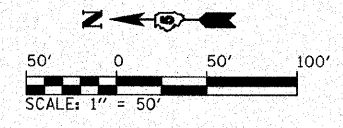



BENCHMARKS

BM #1 - HYDRANT AT S.E. CORNER 4TH & JOHN ST.
IN THE WORD IOWA ON THE "W"

BM #2 - BOLT IN MUELLER ON THE HYDRANT ON THE
S.E. CORNER OF FOURTH ST. & DANIEL ST.



- ALL ELEVATIONS SHOWN ARE REFERRED TO THE N.A.V.D. 1988 DATUM. ALL HORIZONTAL CONTROL SHOWN BASED UPON STATE PLANE COORDINATE SYSTEM ILLINOIS EAST ZONE NAD 83, 2007 ADJUSTMENTS. LOCAL VERTICAL AND HORIZONTAL CONTROL SET BY G.P.S. FROM U OF I CORS BASE STATION.

FILE NAME = I:\champaign\102940100\draw\cadd\sheet5	USER NAME = Jim Michael Alignment\Layout\01-4thStreet.dgn	DESIGNED - RMM DRAWN - RAH CHECKED - JMM DATE - 10/18/2010	 CMT CHAMFORD, MURPHY & TILLY, INC. CONSULTING ENGINEERS License No. 184-000613	CITY OF CHAMPAIGN DEPARTMENT OF PUBLIC WORKS	HORIZONTAL ALIGNMENT LAYOUT AND CONTROL FOURTH STREET IMPROVEMENT CHAMPAIGN, ILLINOIS	F.A.U. RTE. 7171	SECTION 10-00285-00-SP	COUNTY CHAMPAIGN	TOTAL SHEETS 55	SHEET NO. 6	CONTRACT NO. 91445 ILLINOIS FED. AID PROJECT
SCALE: SHEET NO. OF SHEETS STA. TO STA.											