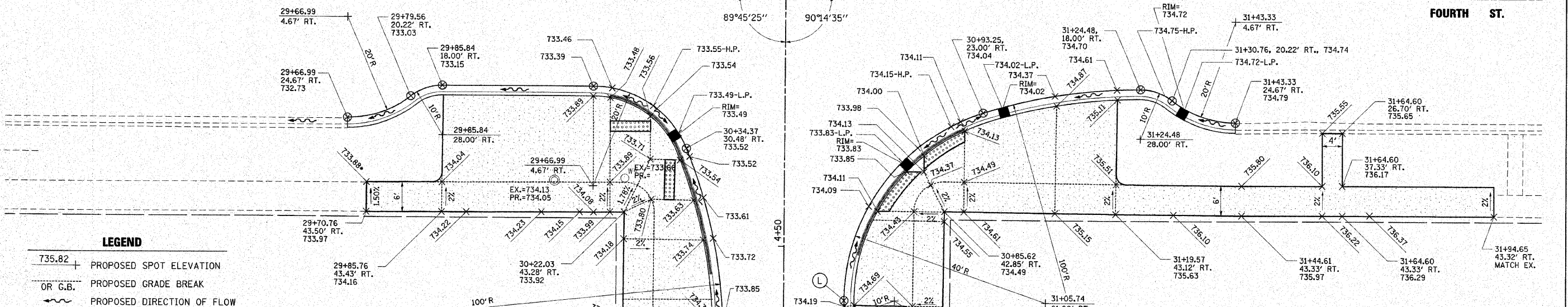
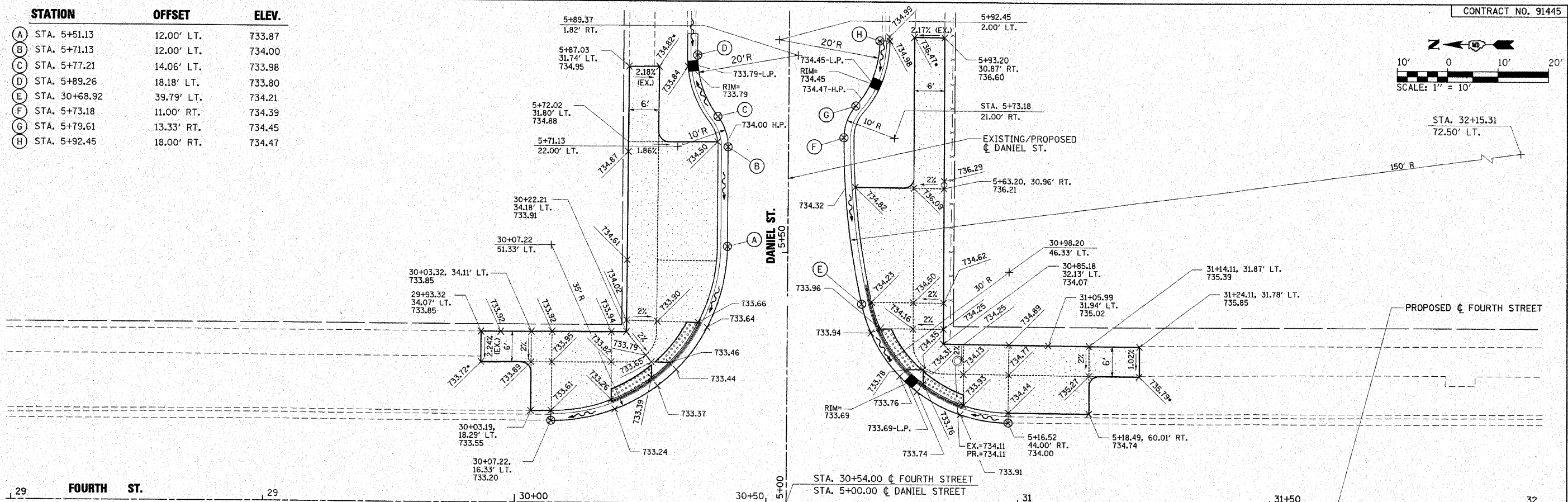
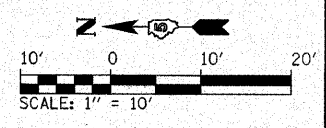


STATION	OFFSET	ELEV.
(A) STA. 5+51.13	12.00' LT.	733.87
(B) STA. 5+71.13	12.00' LT.	734.00
(C) STA. 5+77.21	14.06' LT.	733.98
(D) STA. 5+89.26	18.18' LT.	733.80
(E) STA. 30+68.92	39.79' LT.	734.21
(F) STA. 5+73.18	11.00' RT.	734.39
(G) STA. 5+79.61	13.33' RT.	734.45
(H) STA. 5+92.45	18.00' RT.	734.47



LEGEND

- 735.82 + PROPOSED SPOT ELEVATION
- OR G.B. PROPOSED GRADE BREAK
- ~ PROPOSED DIRECTION OF FLOW
- H.P./L.P. HIGH POINT / LOW POINT
- ⊗ RADIUS POINT
- T/C TOP OF CURB
- DEPRESSED CURB
- 5' TRANSITION

PROPOSED PAVEMENT LIMITS ARE NOT SHOWN. FOR PAVEMENT REMOVAL AND REPLACEMENT LIMITS, SEE REMOVAL/RELOCATION PLANS

* PROPOSED SIDEWALK ELEVATION SUBJECT TO CHANGE BY ENGINEER TO MATCH EXISTING SIDEWALK CROSS-SLOPE

STATION	OFFSET	ELEV.
(I) STA. 4+31.44	12.00' LT.	733.87
(J) STA. 4+25.44	14.00' LT.	733.87
(K) STA. 4+13.44	18.00' LT.	733.76
(L) STA. 4+39.28	12.00' RT.	734.18
(M) STA. 4+33.32	14.00' RT.	734.22
(N) STA. 4+21.32	18.00' RT.	734.20
(O) STA. 4+23.72	17.85' RT.	734.18-L.P.
(P) STA. 4+28.71	12.38' LT.	733.88-H.P.
(Q) STA. 4+17.95	17.49' LT.	733.76
(R) STA. 4+16.68	17.74' LT.	733.76-L.P.