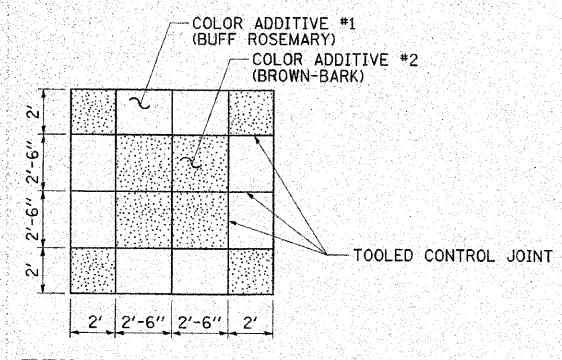
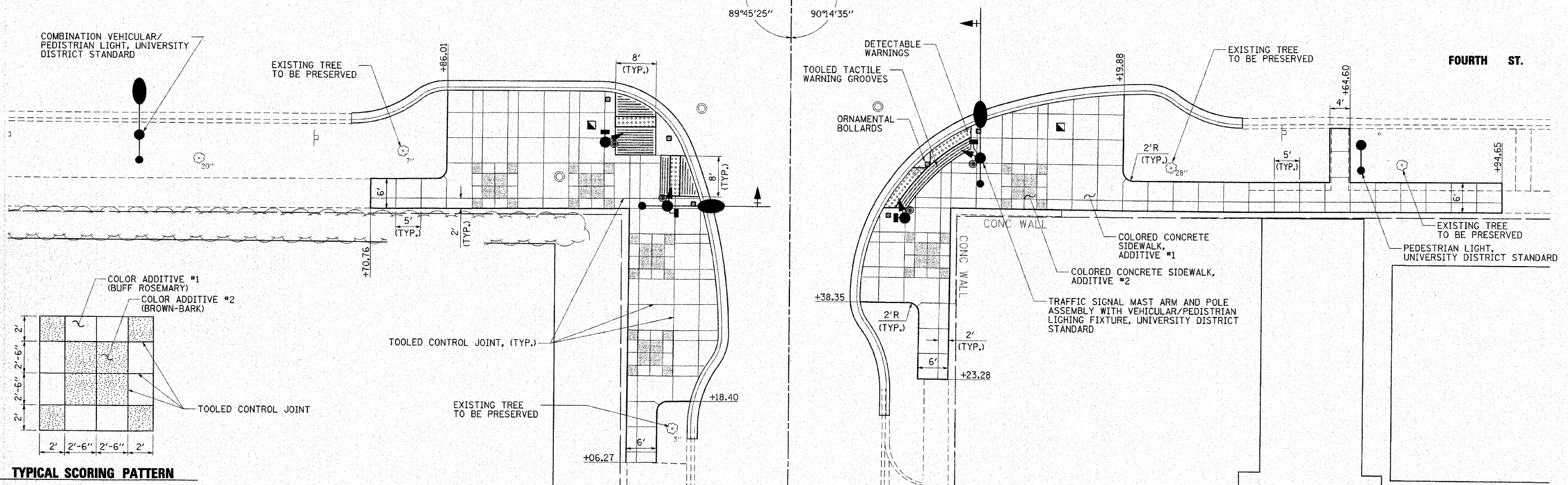
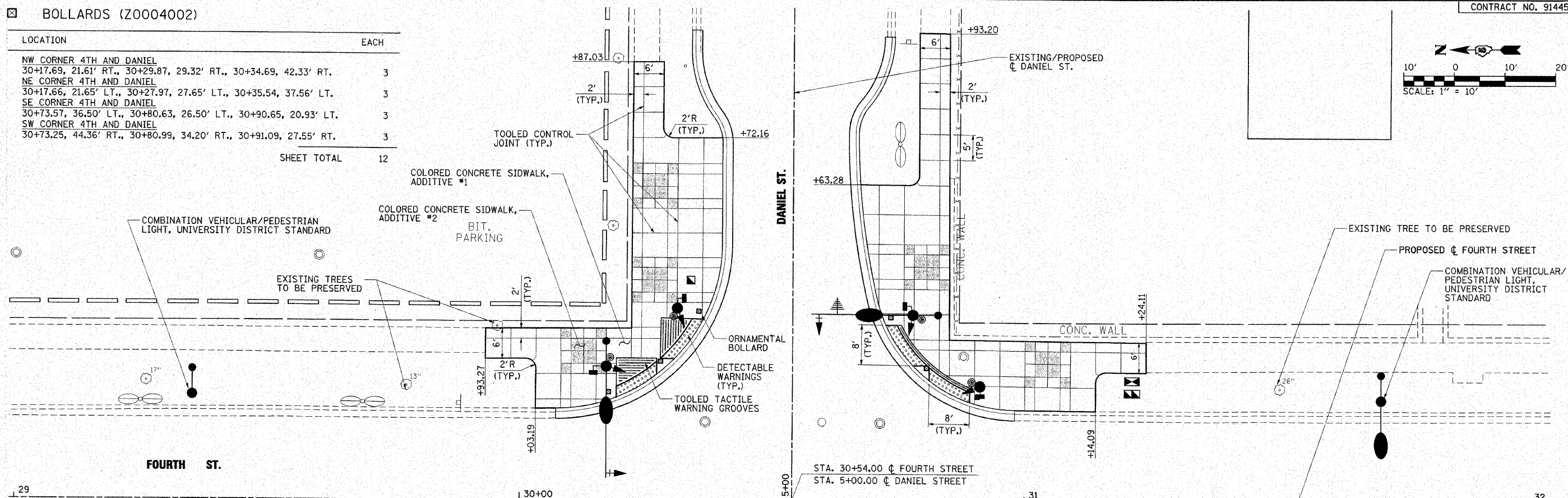
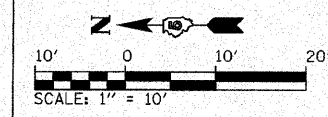


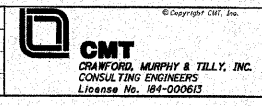
BOLLARDS (Z0004002)

CONTRACT NO. 91445

LOCATION	EACH
NW CORNER 4TH AND DANIEL 30+17.69, 21.61' RT., 30+29.87, 29.32' RT., 30+34.69, 42.33' RT.	3
NE CORNER 4TH AND DANIEL 30+17.66, 21.65' LT., 30+27.97, 27.65' LT., 30+35.54, 37.56' LT.	3
SE CORNER 4TH AND DANIEL 30+73.57, 36.50' LT., 30+80.63, 26.50' LT., 30+90.65, 20.93' LT.	3
SW CORNER 4TH AND DANIEL 30+73.25, 44.36' RT., 30+80.99, 34.20' RT., 30+91.09, 27.55' RT.	3
SHEET TOTAL	12



FILE NAME = I:\champaign\100940100\draw\cadd_sheets	USER NAME = Jim Michael	DESIGNED - JMM
StreetScape02-Daniel.dgn		DRAWN - PMH
PLOT SCALE = 1/8" = 1' / IN.		CHECKED - JMM
PLOT DATE = 10/16/2010		DATE = 10/15/2010



**CITY OF CHAMPAIGN
DEPARTMENT OF PUBLIC WORKS**

**STREETSCAPE DETAILS
FOURTH STREET IMPROVEMENTS
CHAMPAIGN, ILLINOIS**

SCALE: 1" = 10' SHEET NO. OF SHEETS STA. TO STA.

F.A.U. RTE. 7171	SECTION 10-00285-00-SP	COUNTY CHAMPAIGN	TOTAL SHEETS 55	SHEET NO. 30
CONTRACT NO. 91445				
ILLINOIS FED. AID PROJECT				