

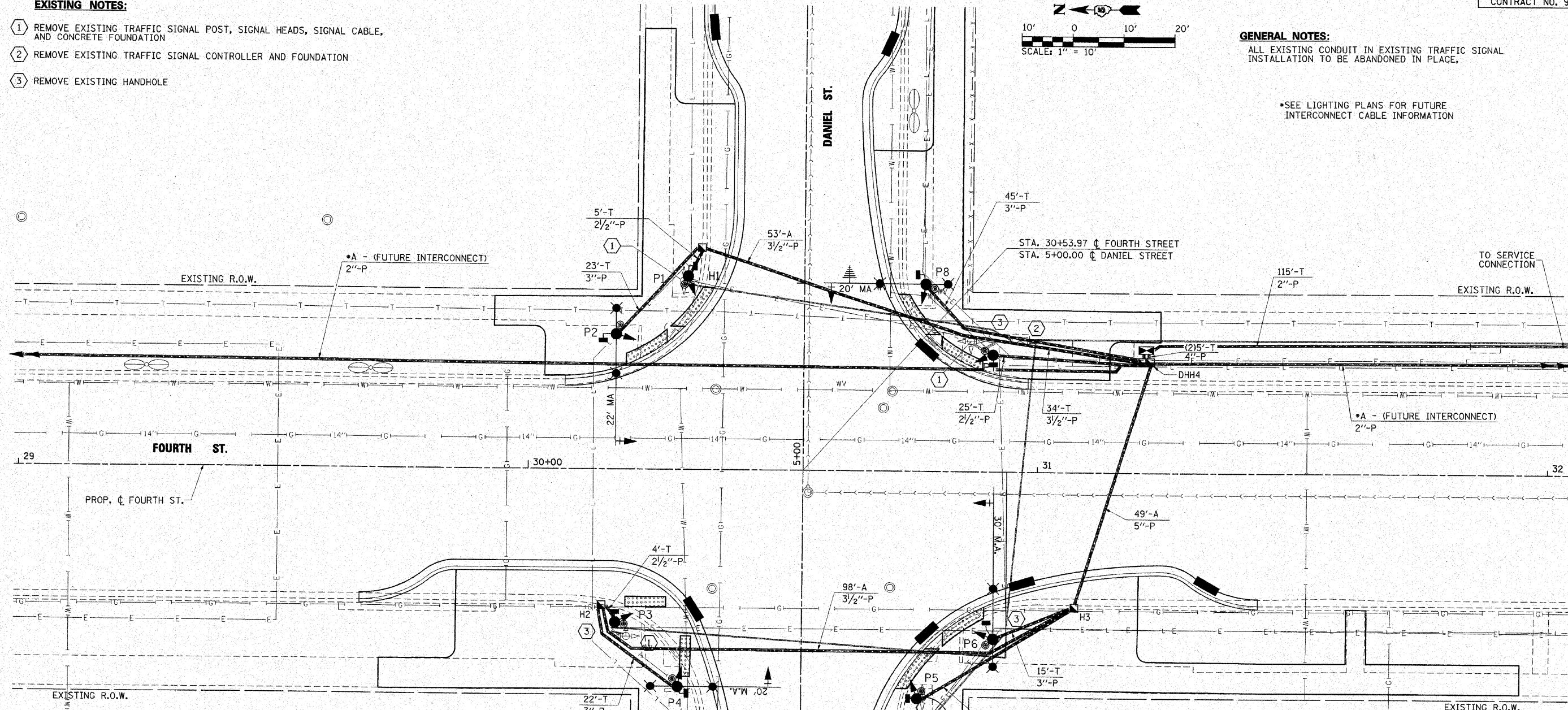
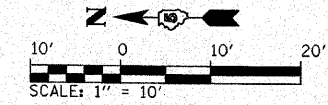
**EXISTING NOTES:**

- 1 REMOVE EXISTING TRAFFIC SIGNAL POST, SIGNAL HEADS, SIGNAL CABLE, AND CONCRETE FOUNDATION
- 2 REMOVE EXISTING TRAFFIC SIGNAL CONTROLLER AND FOUNDATION
- 3 REMOVE EXISTING HANDHOLE

**GENERAL NOTES:**

ALL EXISTING CONDUIT IN EXISTING TRAFFIC SIGNAL INSTALLATION TO BE ABANDONED IN PLACE.

\*SEE LIGHTING PLANS FOR FUTURE INTERCONNECT CABLE INFORMATION



**TRAFFIC SIGNAL LEGEND**

- SIGNAL POST
- ▶ SIGNAL HEAD
- ▶+ SIGNAL HEAD WITH BACKPLATE
- PEDESTRIAN SIGNAL HEAD
- ⊙ PEDESTRIAN PUSH-BUTTON POST
- ⊕ G.P.S. PREEMPTION ANTENNA
- 📷 VEHICLE DETECTION CAMERA
- ◻ COMPOSITE CONCRETE HANDHOLE
- ◼ CONCRETE DOUBLE HANDHOLE

● 24' M.A. COMBINATION MAST ARM W/ARM LENGTH AND 8' MAST ARM FOR LUMINAIRE

— PROPOSED CONDUIT  
 LENGTH - CONSTRUCTION (T=TRENCH P=PUSHED A=AUGERED E=EXISTING)  
 SIZE - TYPE (S=STEEL P=PVC F=FIBER DUCT U=UNI-DUCT)

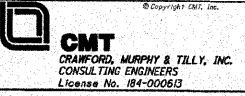
**PROPOSED HANDHOLE DATA**

NO.	STATION	OFFSET	DESCRIPTION
H1	5+43.72	20.20' LT.	COMPOSITE CONC.
H2	30+14.51	26.76' RT.	COMPOSITE CONC.
H3	31+07.51	26.61' RT.	COMPOSITE CONC.
DHH4	31+21.27	21.77' LT.	DOUBLE HANDHOLE, PCC

**POST AND MAST ARM DATA**

NO.	STATION	OFFSET	DESCRIPTION	FOUNDATION
P1	5+38.08	27.85' LT	TRAFFIC SIGNAL POST, 14'	A
P2	30+17.21	26.63' LT	STEEL COMB. MAA&P, 22'	E-30" DIA. 15'
P3	30+17.21	30.12 RT	TRAFFIC SIGNAL POST, 14'	A
P4	4+57.16	24.26' LT	STEEL COMB. MAA&P, 20'	E-30" DIA. 15'
P5	4+55.23	22.74' RT	TRAFFIC SIGNAL POST, 14'	A
P6	30+91.56	32.98' RT	STEEL COMB. MAA&P, 30'	E-30" DIA. 15'
P7	30+91.20	22.99' LT	TRAFFIC SIGNAL POST, 14'	A
P8	5+37.09	23.78' RT	STEEL COMB. MAA&P, 20'	E-30" DIA. 15'
C9	31+21.27	24.20' LT	FULL-ACTUATED CONTROLLER AND TYPE IV CABINET, SP.	D

FILE NAME =	USER NAME = Jm Michael	DESIGNED - RMM
\\champaign\100940100\draw\cadd\sheet	Traffic_Signs\01-Layout.dgn	DRAWN - RAH
PLOT SCALE = 1/8" = 1' IN.		CHECKED - JMM
PLOT DATE = 10/16/2010		DATE - 10/15/2010



**CITY OF CHAMPAIGN  
DEPARTMENT OF PUBLIC WORKS**

**TRAFFIC SIGNAL LAYOUT - FOURTH ST. & DANIEL ST.  
FOURTH STREET IMPROVEMENT  
CHAMPAIGN, ILLINOIS**

SCALE: 1" = 10' SHEET NO. OF SHEETS STA. TO STA.

F.A.U. RTE. 7171	SECTION 10-00285-00-SP	COUNTY CHAMPAIGN	TOTAL SHEETS 55	SHEET NO. 40
ILLINOIS FED. AID PROJECT			CONTRACT NO. 91445	