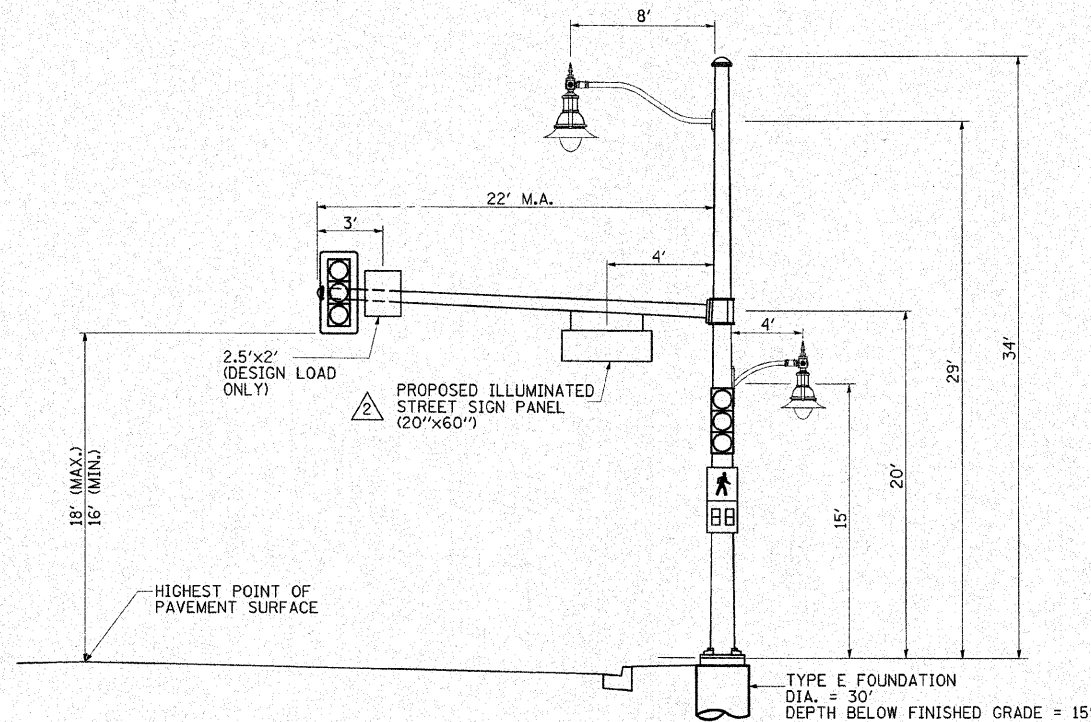
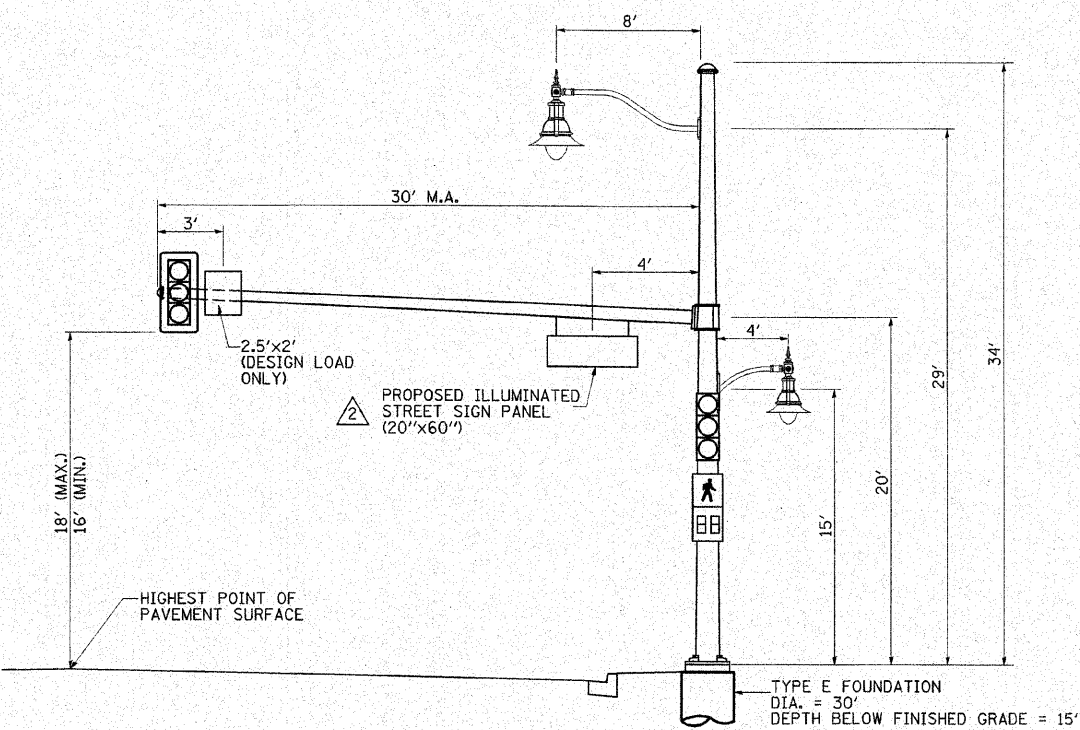


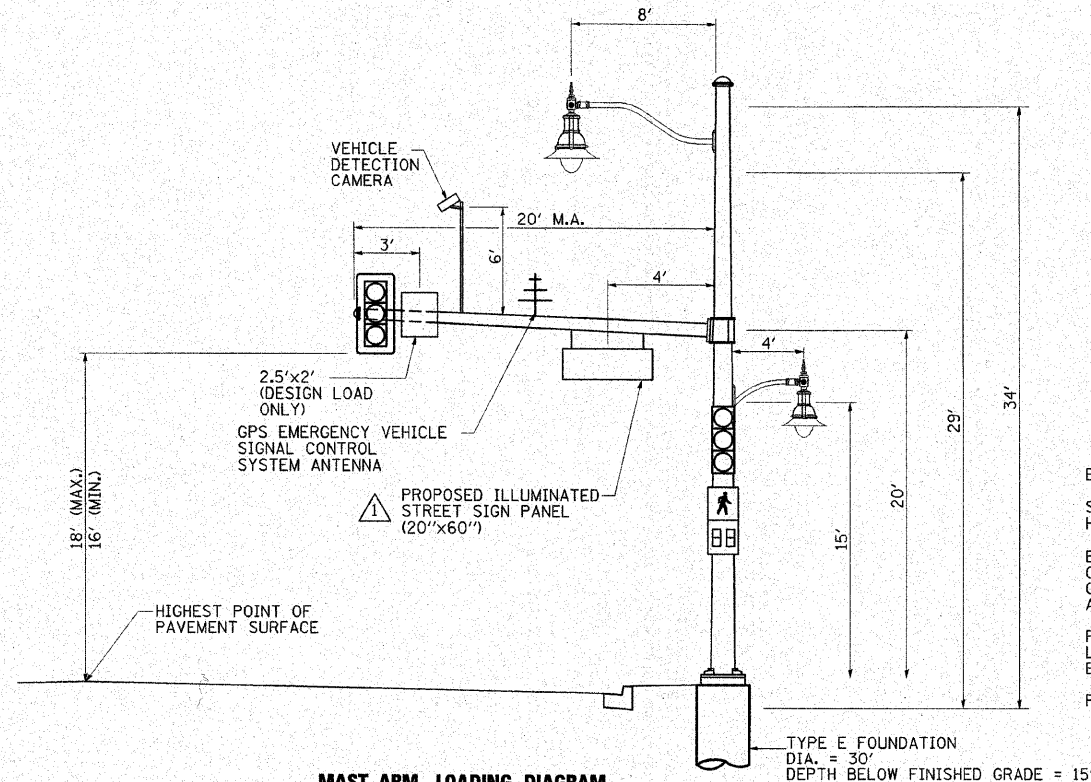
**MAST ARM LOADING DIAGRAM**  
FOURTH STREET & DANIEL STREET  
NORTHWEST QUADRANT



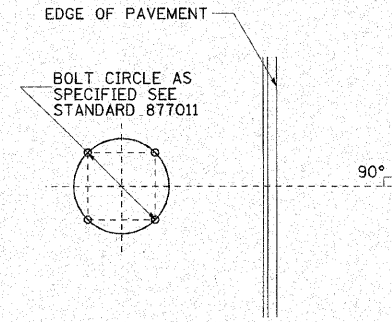
**MAST ARM LOADING DIAGRAM**  
FOURTH STREET & DANIEL STREET  
NORTHEAST QUADRANT



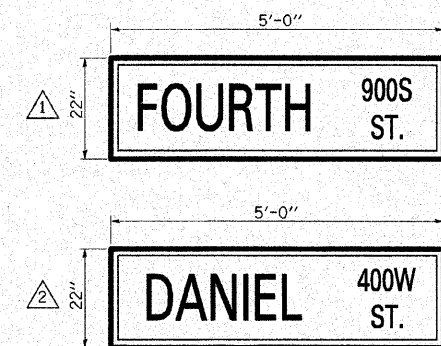
**MAST ARM LOADING DIAGRAM**  
FOURTH STREET & DANIEL STREET  
SOUTHWEST QUADRANT



**MAST ARM LOADING DIAGRAM**  
FOURTH STREET & DANIEL STREET  
SOUTHEAST QUADRANT



**MAST ARM FOUNDATION BOLT PATTERN DETAIL**  
ORIENTATION OF ANCHOR BOLT  
TO BE FIELD VERIFIED



1-WAY LED INTERNALLY ILLUMINATED  
SLIM STREET NAME SIGN  
MAST ARM MOUNTED

**INTERNALLY ILLUMINATED SIGN PANE DETAILS**

EXTERIOR HOUSING SHALL BE SEMI-GLOSS BLACK ENAMEL.

SIGN SHALL BE SUPPORTED BY TWO PELCO TRI-STUD HANGER BODY (\*SE-5028) BRACKETS (INCLUDED IN COST).

BLANK SIGN FACES SHALL BE SUPPLIED TO THE CITY OF CHAMPAIGN DEPARTMENT OF PUBLIC WORKS BY THE CONTRACTOR. THE CITY WILL CONSTRUCT THE GRAPHIC AND THE CONTRACTOR WILL INSTALL THE ENTIRE ASSEMBLY.

FACE COLORS:  
LEGEND AND BORDER- WHITE (NON REFLECTIVE)  
BACKGROUND- GREEN (NON REFLECTIVE)

FORMED LETTERS SHALL BE CLEARVIEW HWY 3-W UPPERCASE.