

NOTE:
SEE SCHEDULES FOR INDIVIDUAL
TREE REMOVAL.

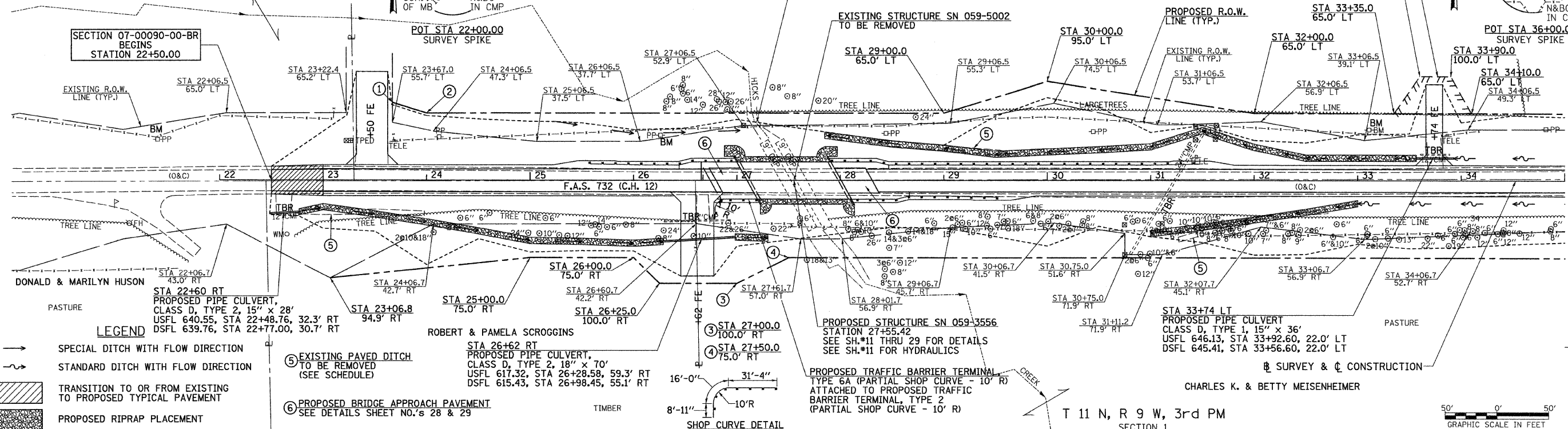
BARBARA SWALLEY, DAVID RALSTON,
DALE RALSTON, & RANDY RALSTON

T 12 N, R 9 W, 3rd PM
SECTION 36

TEMPORARY EASEMENT FOR
PURPOSE OF RECONSTRUCTING
FIELD ENTRANCE

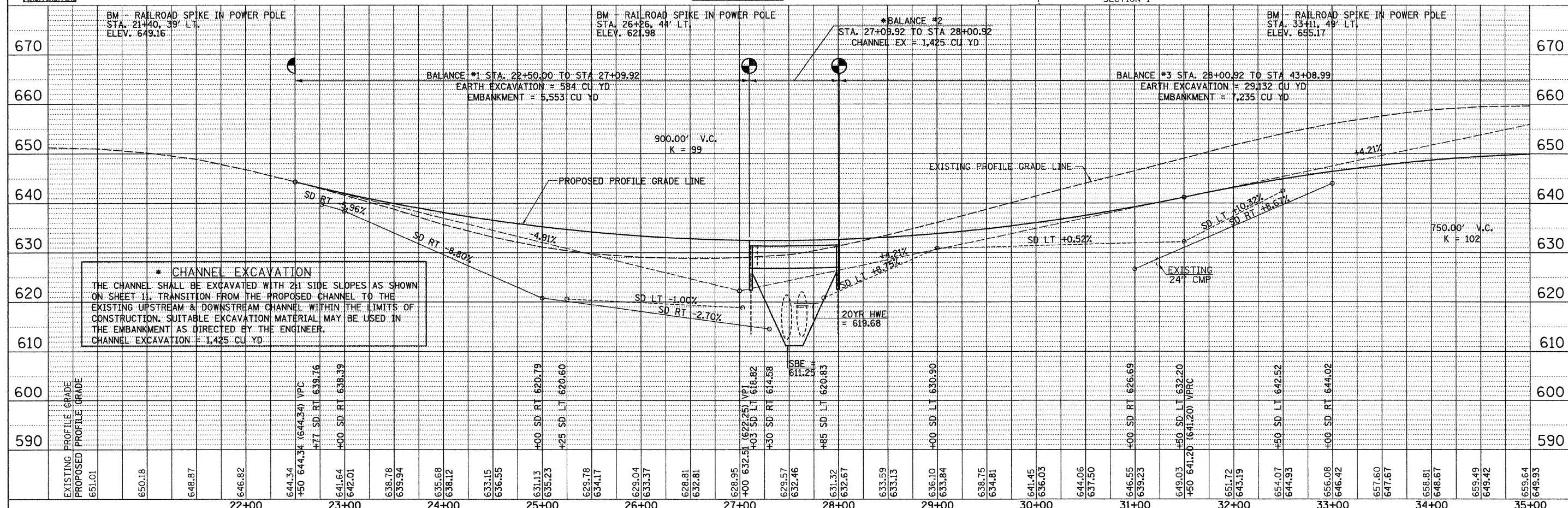
LEROY GAFFNEY &
JOSIE C. GAFFNEY

N&BC IN CP
12" TREE
5/8" I. ROD



DATE	
BY	
REVISION	
NO.	
DATE	
BY	
REVISION	
NO.	
DATE	
BY	
REVISION	
NO.	

DATE	
BY	
REVISION	
NO.	
DATE	
BY	
REVISION	
NO.	
DATE	
BY	
REVISION	
NO.	



FILE NAME = V:\Bridge\2576-1 Macoupin\2576pp1.dgn	USER NAME = cthomas	DESIGNED -	REVISED -	<p align="center">MACOUPIN COUNTY COUNTY HIGHWAY 12 OVER HICKS CREEK AND JOES CREEK</p>												<p align="center">PLAN AND PROFILE</p>			F.A.S. RTE. 732	SECTION 07-00090-00-BR	COUNTY MACOUPIN	TOTAL SHEETS 77	SHEET NO. 9
PLOT SCALE = 50.000' / IN.	CHECKED -	DRAWN -	REVISED -													SCALE: 1"=50'	SHEET NO. 1 OF 2 SHEETS	STA. 22+50.00 TO STA. 35+00.00	FED. ROAD DIST. NO. 7 (ILLINOIS)	FED. AID PROJECT BRS-0732(148)			
PLOT DATE = 5/17/2010	DATE -	DATE -	DATE -																				