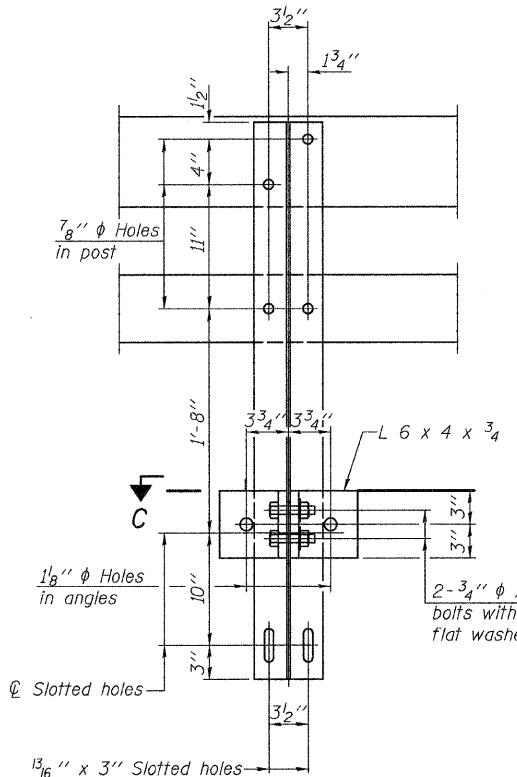
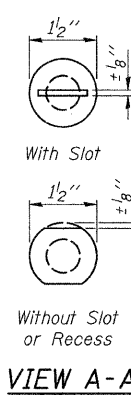
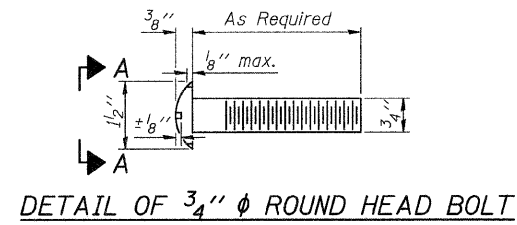
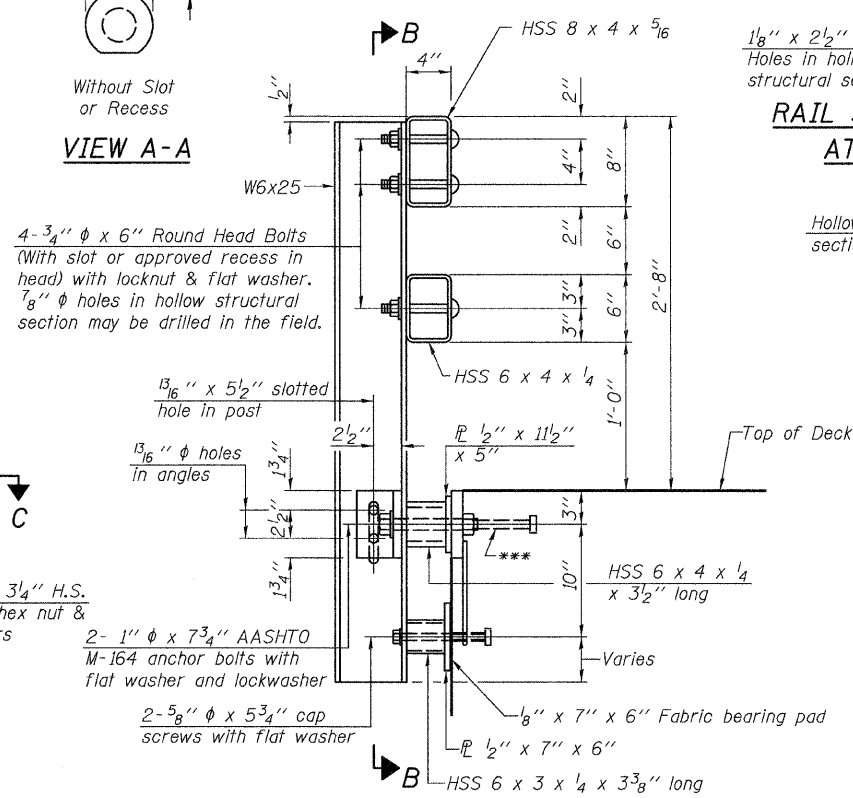


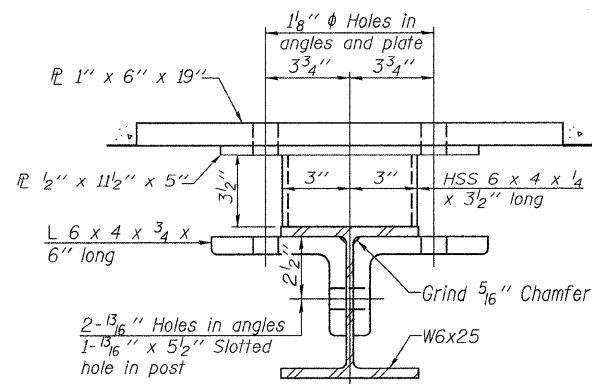
FOR RAIL POST SPACING SEE SH.#8 OF 19.



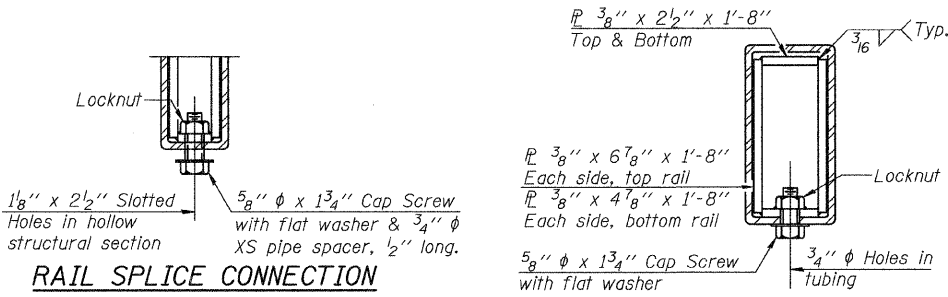
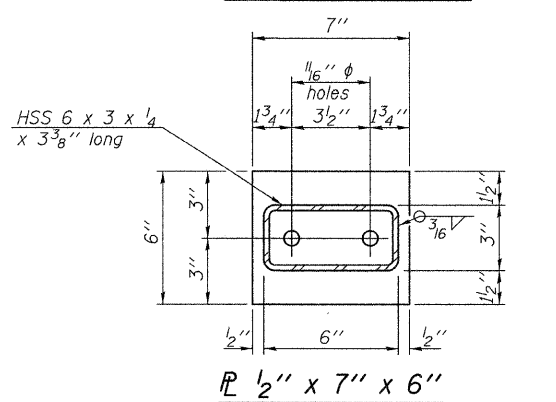
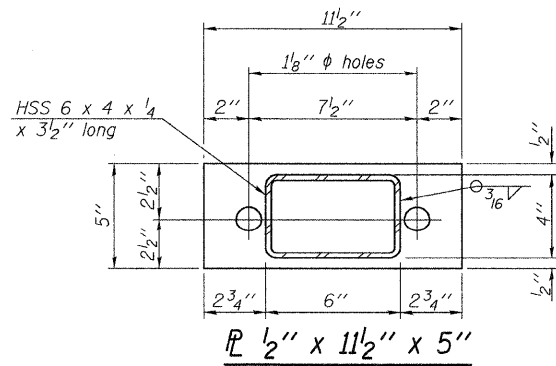
SECTION B-B



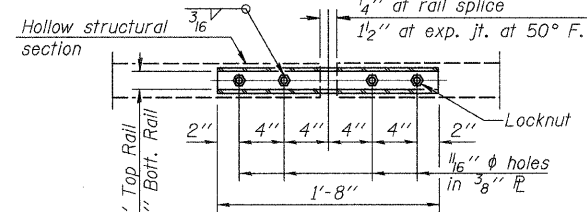
SECTION AT RAIL POST



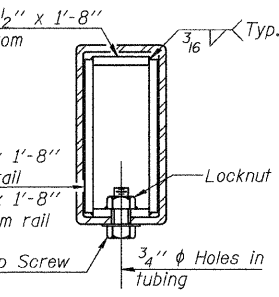
SECTION C-C



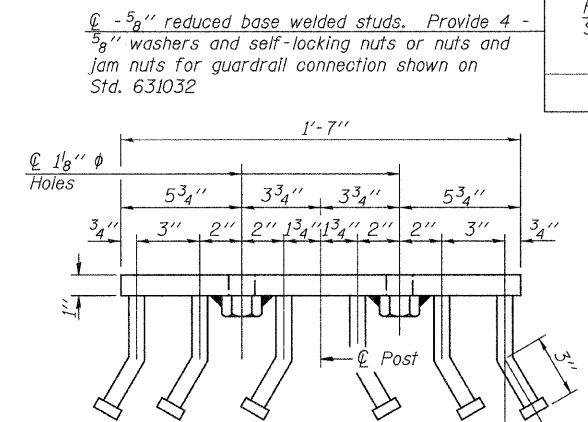
RAIL SPLICE CONNECTION AT EXPANSION JT.



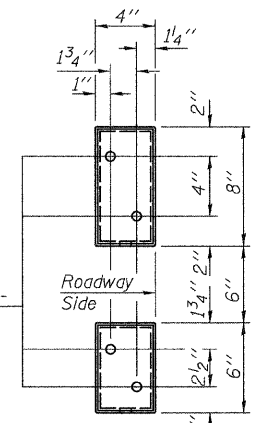
PLAN-BOTT. SPLICE TYPICAL



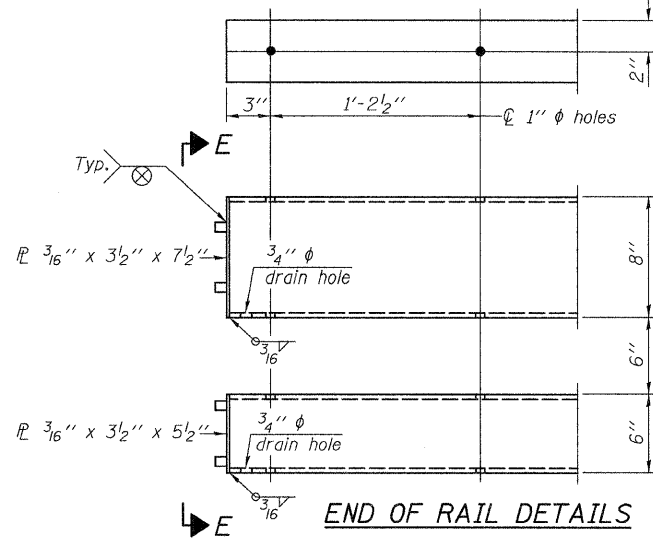
SECTION AT RAIL SPLICE



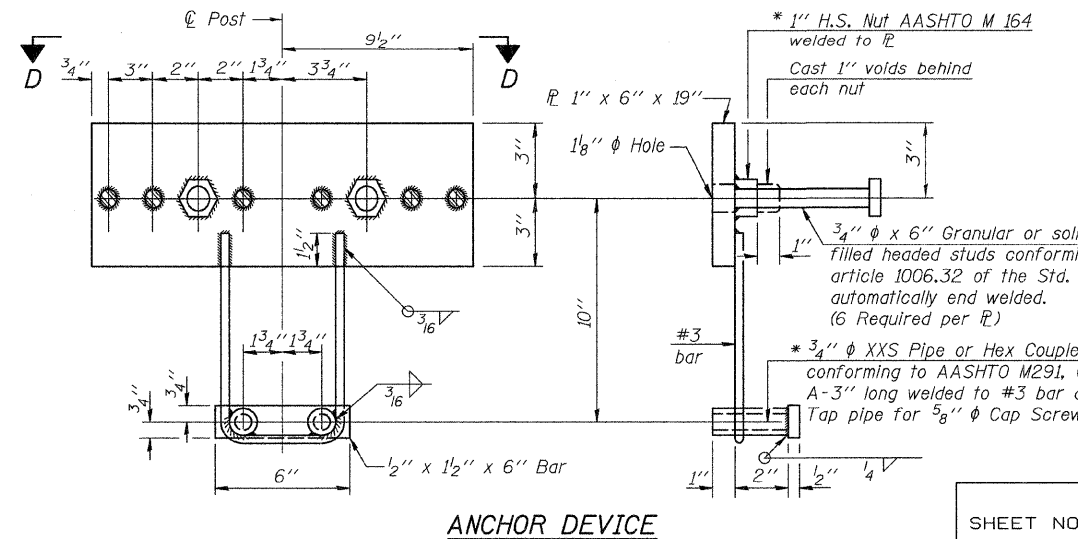
VIEW D-D



VIEW E-E



END OF RAIL DETAILS



ANCHOR DEVICE

Notes:
 All field drilled holes shall be coated with an approved zinc rich paint before erection.
 For multi-span bridges, sufficient 1/4" x 6" x 1'-2" galvanized steel shims shall be provided to align rail between adjacent spans. Cost included with Steel Railing, Type SM.
 All steel rail members shall be galvanized according to Article 509.05 of the Standard Specifications.
 *** The studs of the anchor devices shall be placed below the top reinforcement bars and the outermost longitudinal reinforcement bar shall be placed directly above the studs of the rail post anchor device.

BILL OF MATERIAL

Item	Unit	Quantity
Steel Railing, Type SM	Foot	182

STEEL RAILING, TYPE SM
 C.H. 12 OVER HICKS CREEK
 SECTION 07-00090-00-BR
 MACOUPIN COUNTY

SHEET NO. 10	ROUTE NO.	SECTION	COUNTY	TOTAL SHEETS	SHEET NO.
	19 SHEETS	CH 12	07-00090-00-BR	MACOUPIN	77
SN 059-3556			CONTRACT NO. 93538		
FED. ROAD DIST. NO. 7 ILLINOIS			FED. AID PROJECT BRS-0732(148)		

*Threaded areas shall be plugged or blocked off during casting of beam. Galvanized after fabrication.