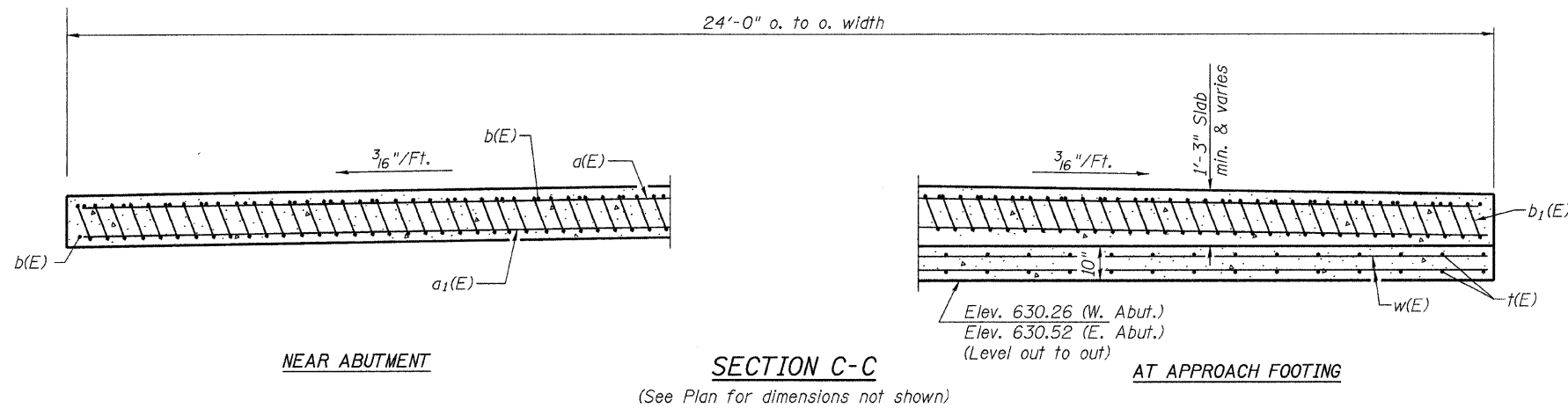


Notes:
 See sheet 18 of 19 for Detail A.
 For v(E) bar details, see sheet 8 of 19.
 The approach footing maximum applied service bearing pressure (Qmax) = 2.0 ksf.
 For bar splicer details, see sheet 16 of 19.
 For Porous Granular Embankment (Special) and drainage treatment details, see sheet 2 of 19.
 Approach slab concrete shall be Class BS.
 Approach footing concrete shall be Class SI.
 The cost of concrete and reinforcement in approach slab and footing are included with Bridge Approach Pavement.
 The cost of Excavation for approach footing is included with Bridge Approach Pavement.

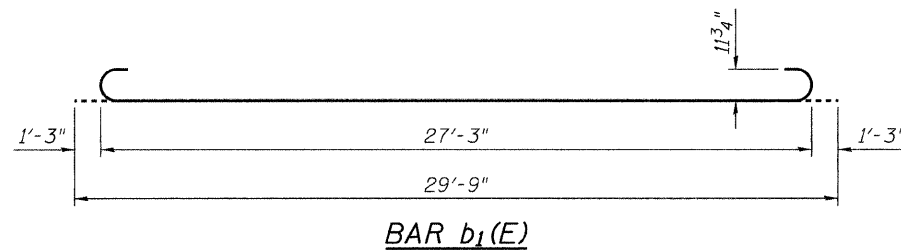


* Tilt #9 b1(E) bars as required to maintain clearance.
 ** Cost included with Bridge Approach Pavement.

*****BAR LIST**
ONE APPROACH PAVEMENT

Bar	No.	Size	Length	Shape
a(E)	25	#4	27'-4"	—
a1(E)	46	#5	27'-4"	—
b(E)	26	#4	29'-8"	—
b1(E)	60	#9	29'-9"	U
t(E)	50	#4	11'-2"	—
w(E)	40	#5	27'-4"	—

***For information only



TWO APPROACHES
BILL OF MATERIAL

Item	Unit	Total
Bridge Approach Pavement	Sq Yd	160

(Sheet 2 of 2)

BRIDGE APPROACH PAVEMENT DETAILS
C.H. 12 OVER HICKS CREEK
SECTION 07-00090-00-BR
MACOUPIN COUNTY

SHEET NO. 19	ROUTE NO. CH 12	SECTION 07-00090-00-BR	COUNTY MACOUPIN	TOTAL SHEETS 77	SHEET NO. 29
19 SHEETS	SN 059-3556		CONTRACT NO. 93538		
FED. ROAD DIST. NO. 7 ILLINOIS		FED. AID PROJECT BRS-0732(148)			