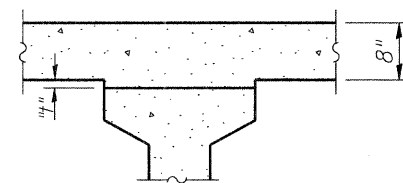


DEAD LOAD DEFLECTION DIAGRAM

(Includes weight of concrete deck, excluding beams)

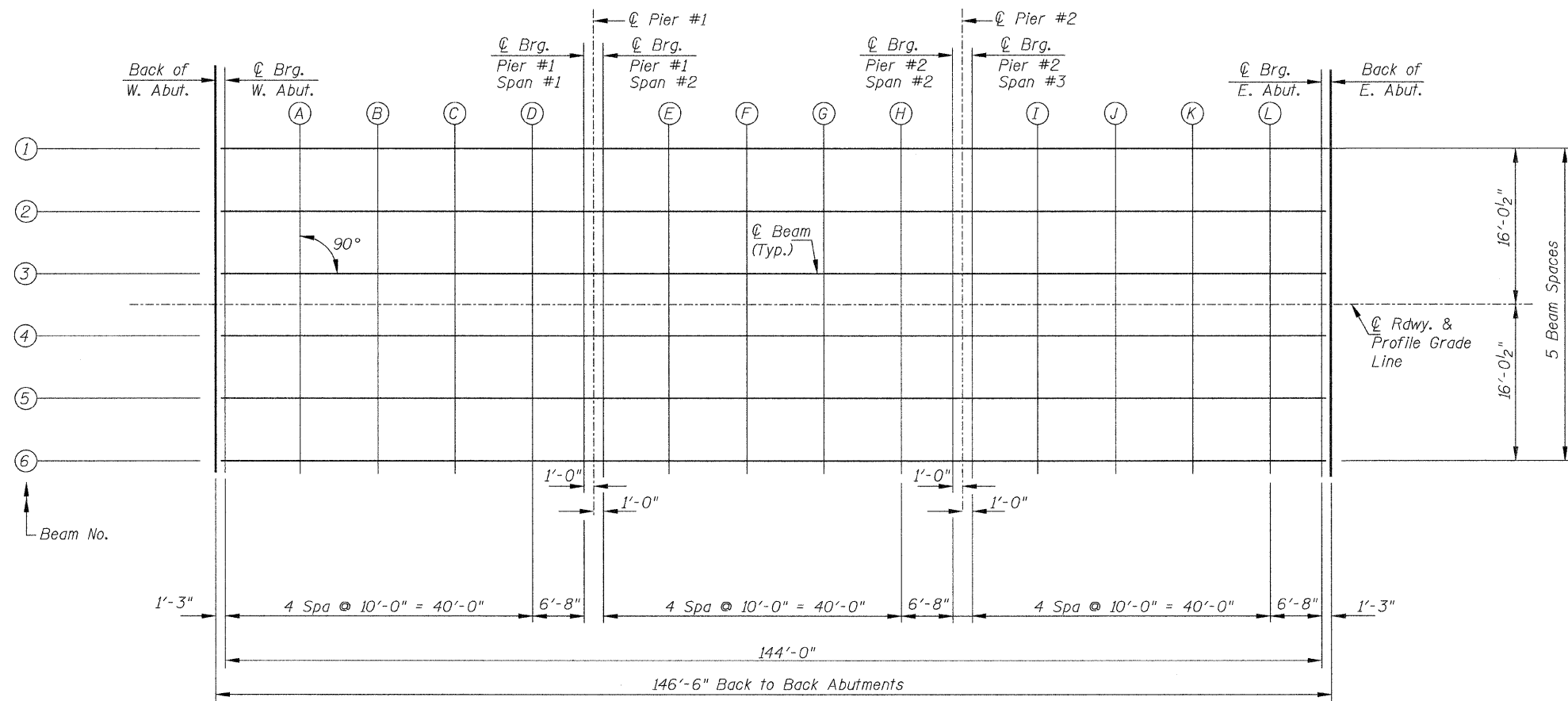
Note:

The above deflections are not to be used in the field if the engineer is working from the grade elevations adjusted for dead load deflections as shown on Sheet 4 of 22.



To determine "t": After all precast prestressed beams have been erected, elevations of the top flanges of the beams shall be taken at intervals shown below. These elevations subtracted from the "Theoretical Grade Elevations Adjusted for Dead Load Deflections" shown on Sh. 4 of 22, minus slab thickness, equals the fillet heights "t" above top flanges of beams.

FILLET HEIGHTS



PLAN (DECK ELEVATIONS)

**TOP OF SLAB ELEVATIONS
C.H. 12 OVER JOES CREEK
SECTION 07-00090-00-BR
MACOUPIN COUNTY**

SHEET NO. 3 22 SHEETS	ROUTE NO.	SECTION	COUNTY	TOTAL SHEETS	SHEET NO.
	CH 12	07-00090-00-BR	MACOUPIN	77	32
SN 059-3557			CONTRACT NO. 93538		
FED. ROAD DIST. NO. 7 ILLINOIS			FED. AID PROJECT BRS-0732(148)		