

NORTH EDGE OF APPROACH PAVEMENT

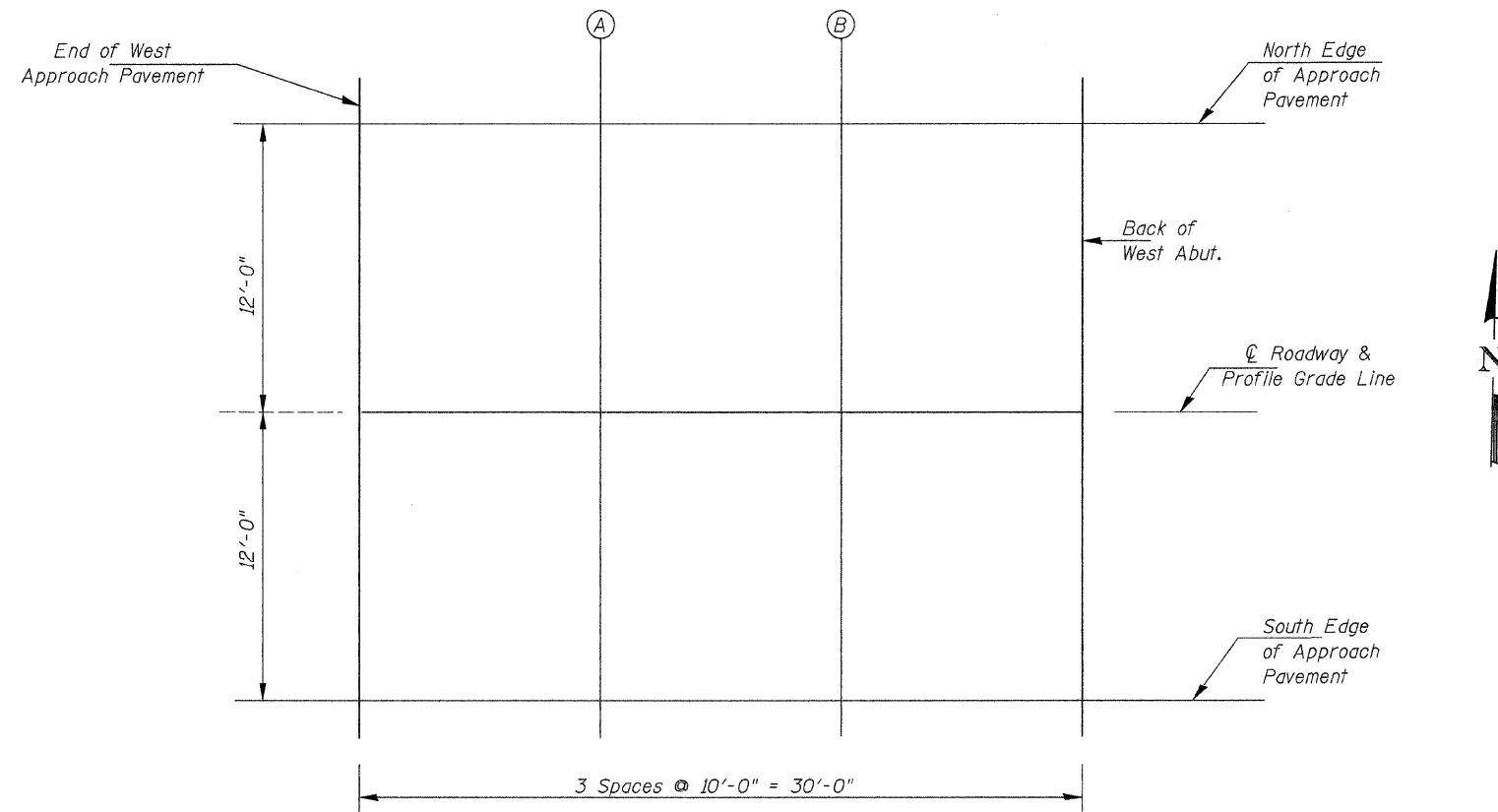
| Location | Station | Offset | Theoretical Grade Elevations |
|-------------------|---------|--------|------------------------------|
| End W. App. Pvmnt | 4278.99 | -12.00 | 640.25 |
| A | 4288.99 | -12.00 | 640.32 |
| B | 4298.99 | -12.00 | 640.40 |
| Bk W. Abutment | 4308.99 | -12.00 | 640.49 |

☉ ROADWAY & PROFILE GRADE

| Location | Station | Offset | Theoretical Grade Elevations |
|-------------------|---------|--------|------------------------------|
| End W. App. Pvmnt | 4278.99 | 0.00 | 640.44 |
| A | 4288.99 | 0.00 | 640.51 |
| B | 4298.99 | 0.00 | 640.59 |
| Bk W. Abutment | 4308.99 | 0.00 | 640.68 |

SOUTH EDGE OF APPROACH PAVEMENT

| Location | Station | Offset | Theoretical Grade Elevations |
|-------------------|---------|--------|------------------------------|
| End W. App. Pvmnt | 4278.99 | 12.00 | 640.25 |
| A | 4288.99 | 12.00 | 640.32 |
| B | 4298.99 | 12.00 | 640.40 |
| Bk W. Abutment | 4308.99 | 12.00 | 640.49 |



PLAN WEST APPROACH PAVEMENT

TOP OF WEST APPROACH PAVEMENT ELEVATIONS
C.H. 12 OVER JOES CREEK
SECTION 07-00090-00-BR
MACOUPIN COUNTY

| SHEET NO. 5 | ROUTE NO. | SECTION | COUNTY | TOTAL SHEETS | SHEET NO. |
|--------------------------------|-----------|----------------|--------------------------------|--------------|-----------|
| 22 SHEETS | CH 12 | 07-00090-00-BR | MACOUPIN | 77 | 34 |
| SN 059-3557 | | | CONTRACT NO. 93538 | | |
| FED. ROAD DIST. NO. 7 ILLINOIS | | | FED. AID PROJECT BRS-0732(148) | | |