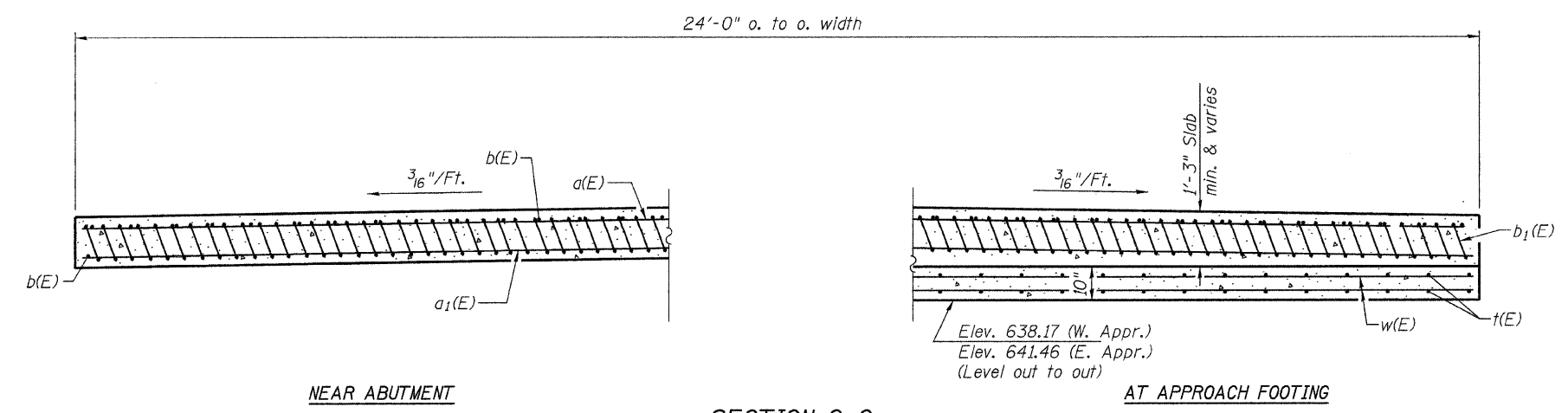


Notes:
 See sheet 21 of 22 for Detail A.
 For v(E) bar details, see sheet 8 of 22.
 The approach footing maximum applied service bearing pressure (Qmax) = 2.0 ksf.
 For bar splicer details, see sheet 19 of 22.
 For Porous Granular Embankment (Special) and drainage treatment details, see sheet 2 of 22.
 Approach slab concrete shall be Class BS.
 Approach footing concrete shall be Class S1.
 The cost of concrete and reinforcement in approach slab and footing are included with Bridge Approach Pavement.
 The cost of Excavation for approach footing is included with Bridge Approach Pavement.

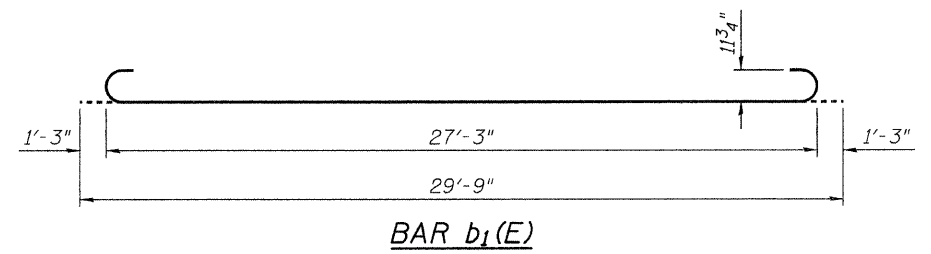


* Tilt #9 b₁(E) bars as required to maintain clearance.
 *** Cost included with Bridge Approach Pavement.

****BAR LIST
 ONE APPROACH PAVEMENT**

Bar	No.	Size	Length	Shape
a(E)	25	#4	23'-8"	—
a ₁ (E)	46	#5	23'-8"	—
b(E)	26	#4	29'-8"	—
b ₁ (E)	60	#9	29'-9"	U
t(E)	50	#4	9'-8"	—
w(E)	40	#5	23'-8"	—

**For information only



**TWO APPROACHES
 BILL OF MATERIAL**

Item	Unit	Total
Bridge Approach Pavement	Sq Yd	160

(Sheet 2 of 2)
**BRIDGE APPROACH PAVEMENT DETAILS
 C.H. 12 OVER JOES CREEK
 SECTION 07-00090-00-BR
 MACOUPIN COUNTY**

SHEET NO. 22	ROUTE NO. CH 12	SECTION 07-00090-00-BR	COUNTY MACOUPIN	TOTAL SHEETS 77	SHEET NO. 51
22 SHEETS	SN 059-3557		CONTRACT NO. 93538		
FED. ROAD DIST. NO. 7		ILLINOIS	FED. AID PROJECT BRS-0732(148)		