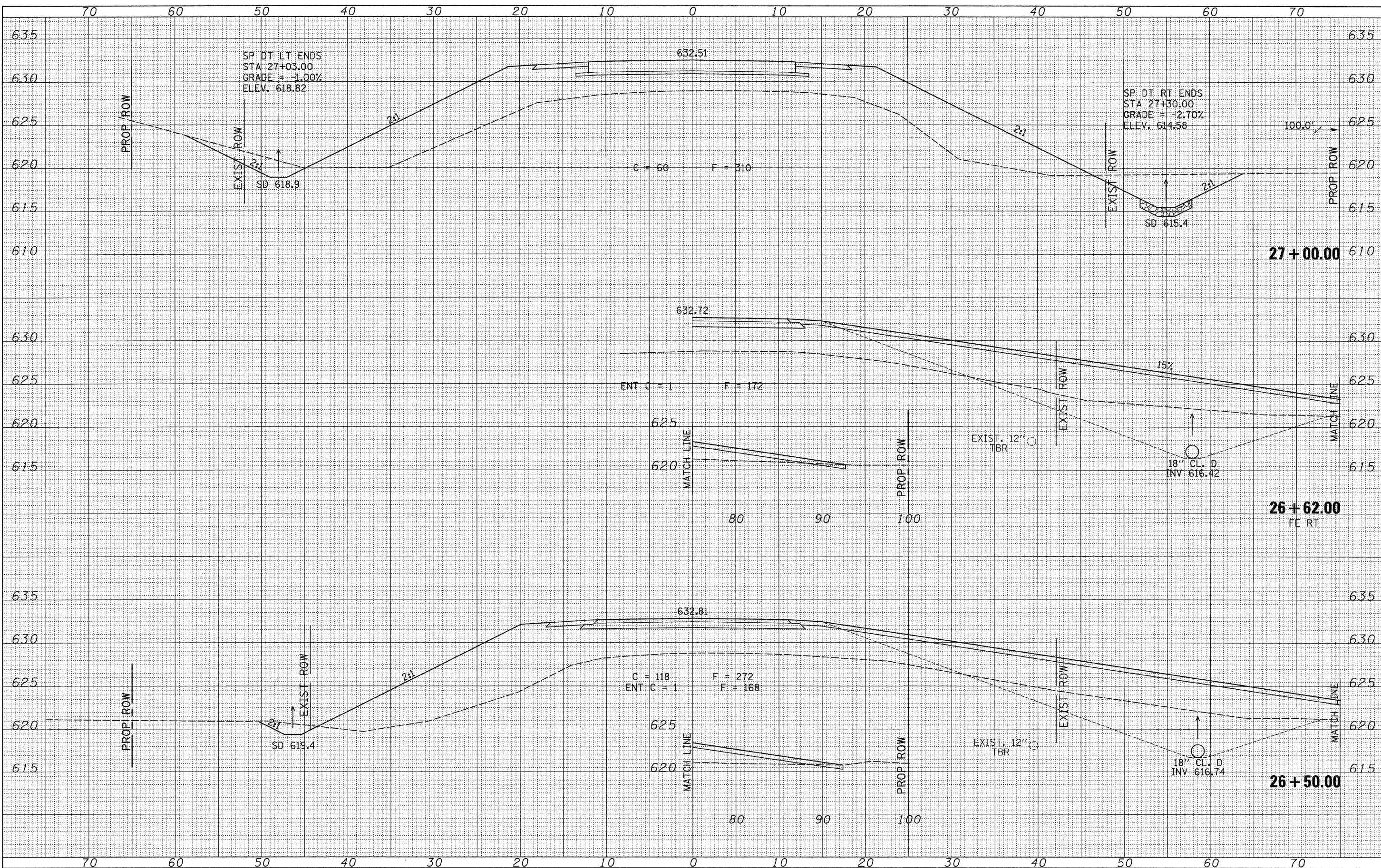


DATE	
BY	
SURVEYED	
TEMPLATE	
AREAS CHECKED	
FINAL SURVEY	
NOTE BOOK	
NO.	

DATE	
BY	
SURVEYED	
TEMPLATE	
AREAS CHECKED	
ORIGINAL SURVEY	
NOTE BOOK	
NO.	



FILE NAME =
 V:\bridge\2576-1 Macoupin\2576KXSHTS.dgn

USER NAME = cthomas	DESIGNED -	REVISED -
PLOT SCALE = 5,0000' / IN.	DRAWN -	REVISED -
PLOT DATE = 2/19/2010	CHECKED -	REVISED -
	DATE -	REVISED -

**MACOUPIN COUNTY
 COUNTY HIGHWAY 12
 OVER HICKS CREEK AND JOES CREEK**

CROSS SECTIONS

SCALE: 1"=5'
 SHEET NO. 5 OF 26 SHEETS
 STA. 26+50.000 TO STA. 27+00.000

F.A.S. RTE. 732	SECTION 07-00090-00-BR	COUNTY MACOUPIN	TOTAL SHEETS 77	SHEET NO. 56
FED. ROAD DIST. NO. 7 [ILLINOIS]			CONTRACT NO. 93538	
FED. AID PROJECT BRS-0732(148)				