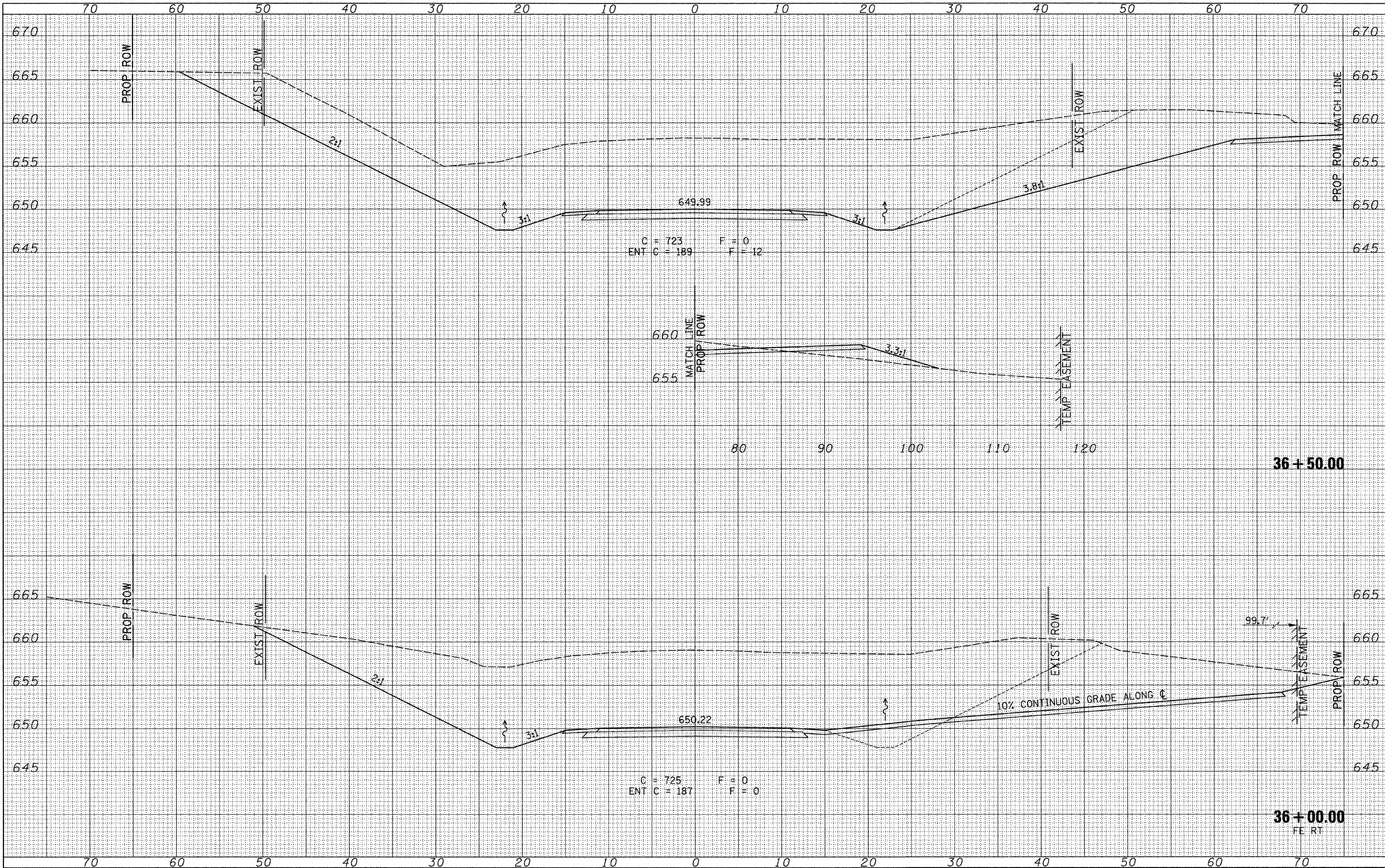


DATE	
BY	
SURVEYED	
PLOTTED	
NOTE BOOK	
AREAS CHECKED	

DATE	
BY	
ORIGINAL SURVEY	
PLOTTED	
NOTE BOOK	
AREAS CHECKED	



FILE NAME = V:\Bridge\2578-1 Macoupin\2578XSSHTS.dgn
 USER NAME = othomas
 PLLOT SCALE = 5,00000' / IN.
 PLLOT DATE = 2/19/2010

DESIGNED -	REVISIED -
DRAWN -	REVISIED -
CHECKED -	REVISIED -
DATE -	REVISIED -

**MACOUPIN COUNTY
 COUNTY HIGHWAY 12
 OVER HICKS CREEK AND JOES CREEK**

CROSS SECTIONS
 SCALE: 1"=5'
 SHEET NO. 14 OF 26 SHEETS
 STA. 36+00.000 TO STA. 36+50.000

F.A.S. RTE.	SECTION	COUNTY	TOTAL SHEETS	SHEET NO.
732	07-00090-00-BR	MACOUPIN	77	65
CONTRACT NO. 93538				
FED. ROAD DIST. NO. 7 ILLINOIS			FED. AID PROJECT BR5-0732(148)	