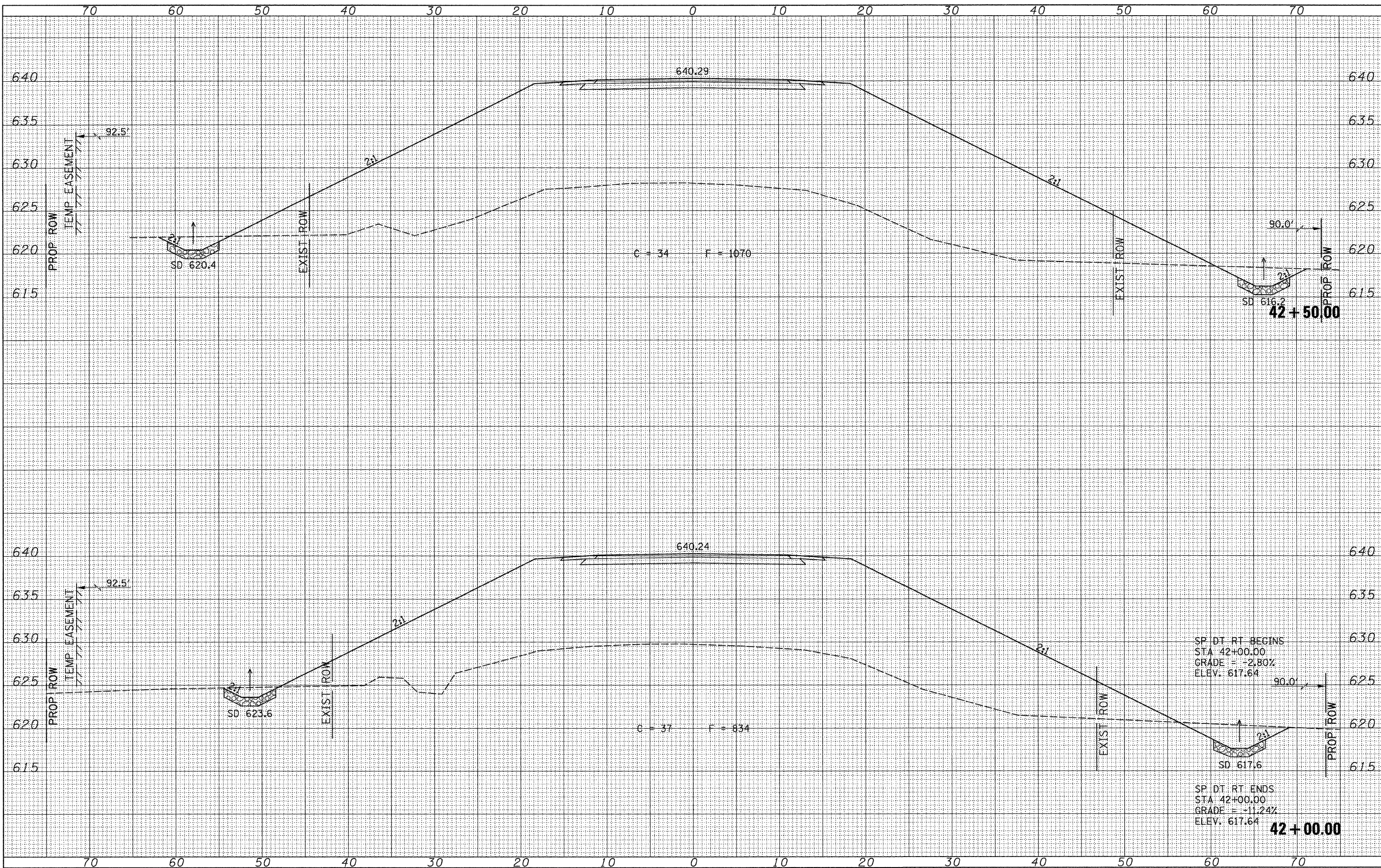


DATE	
BY	
FINAL SURVEY	
NOTED	
NOTE BOOK	
AREAS CHECKED	
NO.	

DATE	
BY	
ORIGINAL SURVEY	
NOTED	
NOTE BOOK	
AREAS CHECKED	
NO.	



FILE NAME = V:\Bridge\2576-1 Macoupin\2576XSSHTS.dgn

USER NAME = cthomas
 PLOT SCALE = 5.0000' / IN.
 PLOT DATE = 2/19/2010

DESIGNED	-	REVISED	-
DRAWN	-	REVISED	-
CHECKED	-	REVISED	-
DATE	-	REVISED	-

**MACOUPIN COUNTY
 COUNTY HIGHWAY 12
 OVER HICKS CREEK AND JOES CREEK**

CROSS SECTIONS
 SCALE: 1"=5'
 SHEET NO. 21 OF 26 SHEETS
 STA. 42+00.000 TO STA. 42+50.000

F.A.S. RTE.	SECTION	COUNTY	TOTAL SHEETS	SHEET NO.
732	07-00090-00-BR	MACOUPIN	77	72
CONTRACT NO. 93598				
FED. ROAD DIST. NO. 7 [ILLINOIS]		FED. AID PROJECT BRS-07321149		