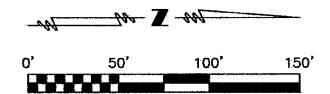


PRE-STAGE CONSTRUCTION

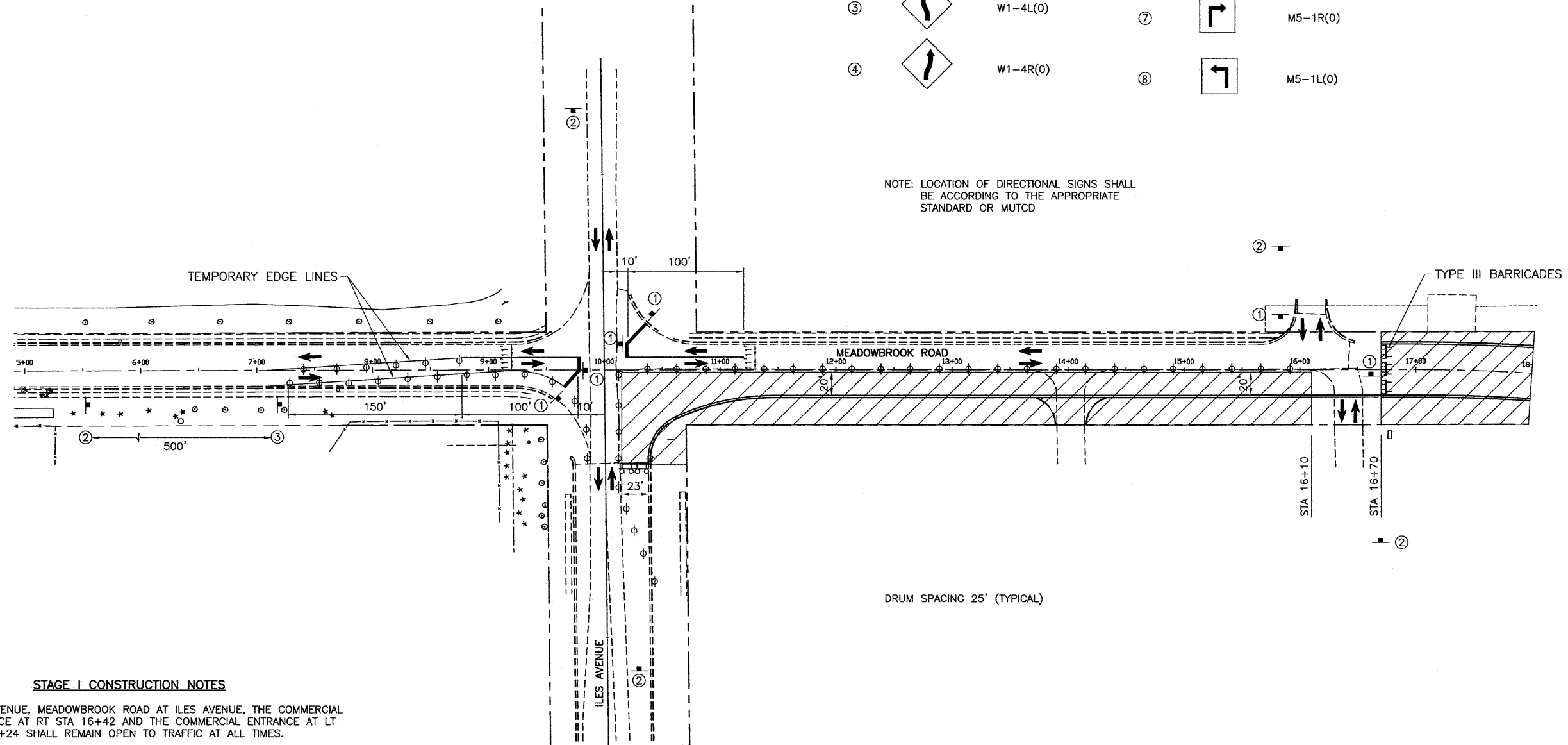
ALL CONSTRUCTION FROM STATION 16+70 TO 33+11.34 CAN BE COMPLETED PRIOR TO OR CONCURRENTLY WITH STAGE CONSTRUCTION. THIS SECTION WILL NOT BE OPENED FOR TRAFFIC UNTIL COMPLETION OF THE STAGE CONSTRUCTION, NOR SHALL IT BE OPENED TO TRAFFIC UNTIL FINAL PAVEMENT MARKING HAS BEEN APPLIED. THERE WILL BE NO SHORT TERM OR TEMPORARY PAVEMENT MARKING COMPUTED ALONG THIS SECTION. THIS WILL APPLY TO MEADOWBROOK ROAD MARKINGS NORTH OF GREENBRIAR ROAD AND EAST AND WEST OF MEADOWBROOK ROAD ON GREENBRIAR ROAD. MEADOWBROOK ROAD SHALL BE CLOSED OFF AT STATION 16+70, THE INTERSECTION OF MCGREGOR LANE AND THE INTERSECTION OF GREENBRIAR ROAD WITH TYPE III BARRICADES WITH FLASHING LIGHTS.

SIGNS

①		R1-1	⑤		W20-3(0)-48
②		W20-1103(0)	⑥		R11-2
③		W1-4L(0)	⑦		M5-1R(0)
④		W1-4R(0)	⑧		M5-1L(0)



NOTE: LOCATION OF DIRECTIONAL SIGNS SHALL BE ACCORDING TO THE APPROPRIATE STANDARD OR MUTCD



STAGE I CONSTRUCTION NOTES

- ILES AVENUE, MEADOWBROOK ROAD AT ILES AVENUE, THE COMMERCIAL ENTRANCE AT RT STA 16+42 AND THE COMMERCIAL ENTRANCE AT LT STA 16+24 SHALL REMAIN OPEN TO TRAFFIC AT ALL TIMES.
- COORDINATE WITH UTILITY COMPANIES FOR ANY ADJUSTMENTS OR RELOCATIONS PRIOR TO CONSTRUCTION.
- CONSTRUCT STORM SEWER LINE 33 TO 16, COMMERCIAL ENTRANCE AT RT STA 14+02, CURB AND GUTTER AND 20 FEET OF PAVEMENT ALONG EAST CURB FROM STA 10+14 TO STA 16+10.
- FROM STA 10+14 TO STA 10+81.14 THE PAVEMENT SHALL BE HOT-MIX ASPHALT PAVEMENT (FULL-DEPTH) 10" ON SUB-BASE GRANULAR MATERIAL, TYPE A, 12". FROM STA 10+81.14 TO STA 16+10 THE PAVEMENT SHALL BE HOT-MIX ASPHALT PAVEMENT (FULL-DEPTH) 8½" ON LIME MODIFIED SOIL MIXTURE 12".
- ALL IMPROVEMENTS TO MEADOWBROOK ROAD AND ILES AVENUE DURING THIS STAGE SHALL BE COMPLETED USING THE APPROPRIATE TRAFFIC CONTROL AND PROTECTION STANDARDS.

LEGEND

- WORK ZONE
- DRUM OR BARRICADE WITH STEADY BURN LIGHT
- TYPE III BARRICADE WITH 2 FLASHING LIGHTS
- TRAFFIC FLOW
- TRAFFIC CONTROL SIGN (NUMBER INDICATES SIGN TYPE SHOWN ABOVE)

SHEET TITLE		STAGE I CONSTRUCTION AND TRAFFIC CONTROL PLAN	
PROJECT	FAU RTE. 8046(MEADOWBROOK ROAD)	PROJECT NO.	09040
	SECTION 09-00465-00-PV	SCALE	1"=50'
	CITY OF SPRINGFIELD	DATE	4/19/10
	SANGAMON COUNTY	CHECKED BY	
Coombe-Bloxdorf P.C. -CIVIL ENGINEERS- -STRUCTURAL ENGINEERS- -LAND SURVEYORS- Phone: 217/544-8477 Design Firm License No. 184-002703 755 South Grand Ave. W. Springfield, IL 62704		DRAWING NO.	13
		OF 30 SHEETS	