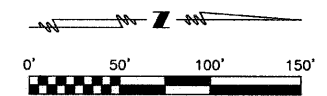
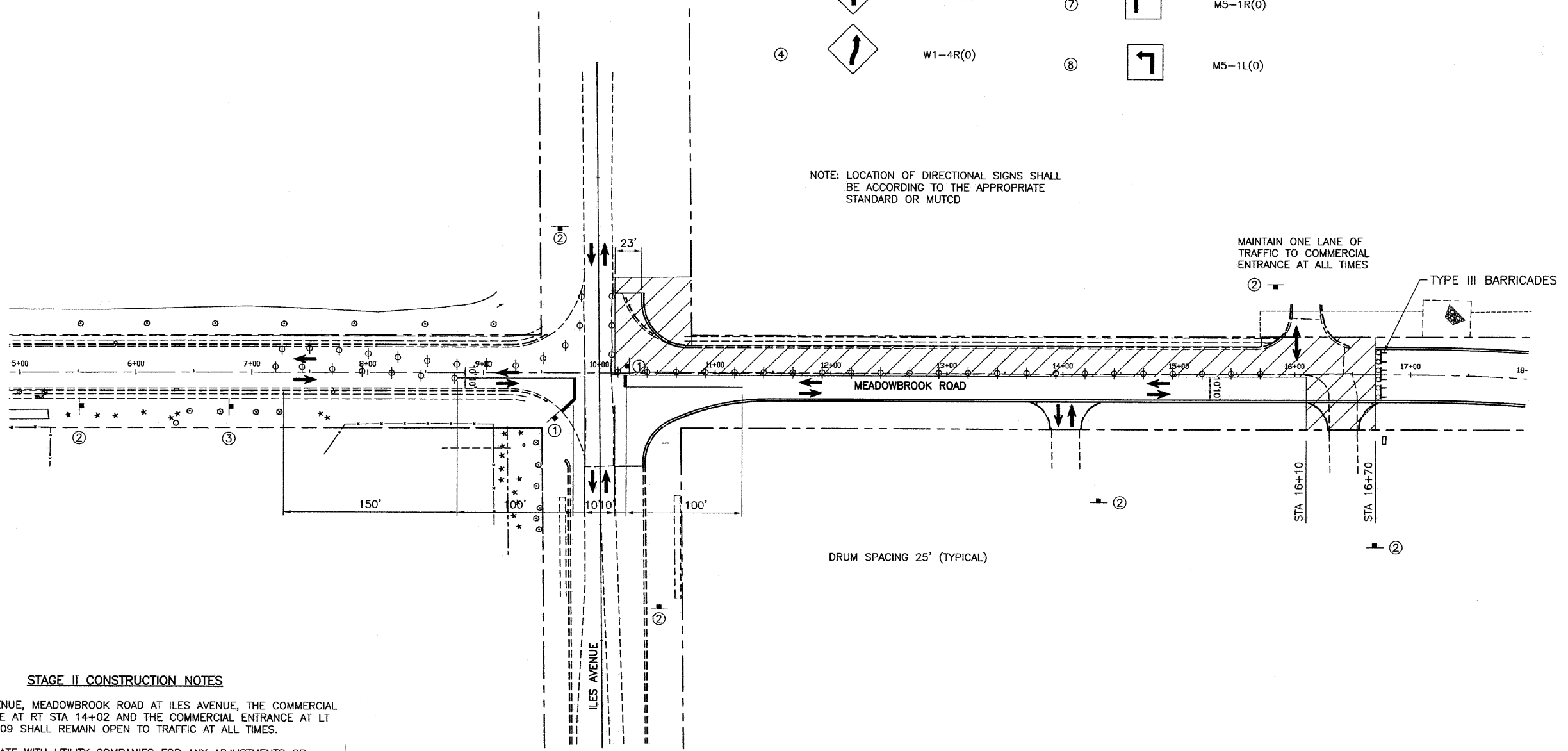


SIGNS

①		R1-1	⑤		W20-3(0)-48
②		W20-1103(0)	⑥		R11-2
③		W1-4L(0)	⑦		M5-1R(0)
④		W1-4R(0)	⑧		M5-1L(0)



NOTE: LOCATION OF DIRECTIONAL SIGNS SHALL BE ACCORDING TO THE APPROPRIATE STANDARD OR MUTCD



DRUM SPACING 25' (TYPICAL)

STAGE II CONSTRUCTION NOTES

- ILES AVENUE, MEADOWBROOK ROAD AT ILES AVENUE, THE COMMERCIAL ENTRANCE AT RT STA 14+02 AND THE COMMERCIAL ENTRANCE AT LT STA 16+09 SHALL REMAIN OPEN TO TRAFFIC AT ALL TIMES.
- COORDINATE WITH UTILITY COMPANIES FOR ANY ADJUSTMENTS OR RELOCATIONS PRIOR TO CONSTRUCTION.
- CONSTRUCT STORM SEWER, CURB AND GUTTER, COMMERCIAL ENTRANCES AT LT STA 16+09 AND RT STA 16+42, CURB AND GUTTER AND 24 FEET OF PAVEMENT BETWEEN EXISTING WEST CURB AND NEW PAVEMENT CONSTRUCTED IN STAGE I FROM STA 10+14 TO STA 16+70.
- FROM STA 10+14 TO STA 10+81.14 THE PAVEMENT SHALL BE HOT-MIX ASPHALT PAVEMENT (FULL-DEPTH), 10" ON SUB-BASE GRANULAR MATERIAL, TYPE A, 12". FROM STA 10+81.14 TO STA 16+70 THE PAVEMENT SHALL BE HOT-MIX ASPHALT PAVEMENT (FULL-DEPTH) 8½" ON LIME MODIFIED SOIL MIXTURE 12".
- ALL IMPROVEMENTS TO MEADOWBROOK ROAD AND ILES AVENUE DURING THIS STAGE SHALL BE COMPLETED USING THE APPROPRIATE TRAFFIC CONTROL AND PROTECTION STANDARDS.

LEGEND

- WORK ZONE
- DRUM OR BARRICADE WITH STEADY BURN LIGHT
- TYPE III BARRICADE WITH 2 FLASHING LIGHTS
- TRAFFIC FLOW
- TRAFFIC CONTROL SIGN (NUMBER INDICATES SIGN TYPE SHOWN ABOVE)

SHEET TITLE STAGE II CONSTRUCTION AND TRAFFIC CONTROL PLAN	
PROJECT FAU RTE. 8046(MEADOWBROOK ROAD) SECTION 09-00465-00-PV CITY OF SPRINGFIELD SANGAMON COUNTY	PROJECT NO. 09040 SCALE 1"=50' DATE 4/19/10 DRAWN BY CHECKED BY DRAWING NO.
 COOMBE-BLOXDORF P.C. -CIVIL ENGINEERS- -STRUCTURAL ENGINEERS- -LAND SURVEYORS- Phone: 217/544-8477 Design Firm License No. 184-002703 755 South Grand Ave. W, Springfield, IL 62704	
14 OF 30 SHTS	