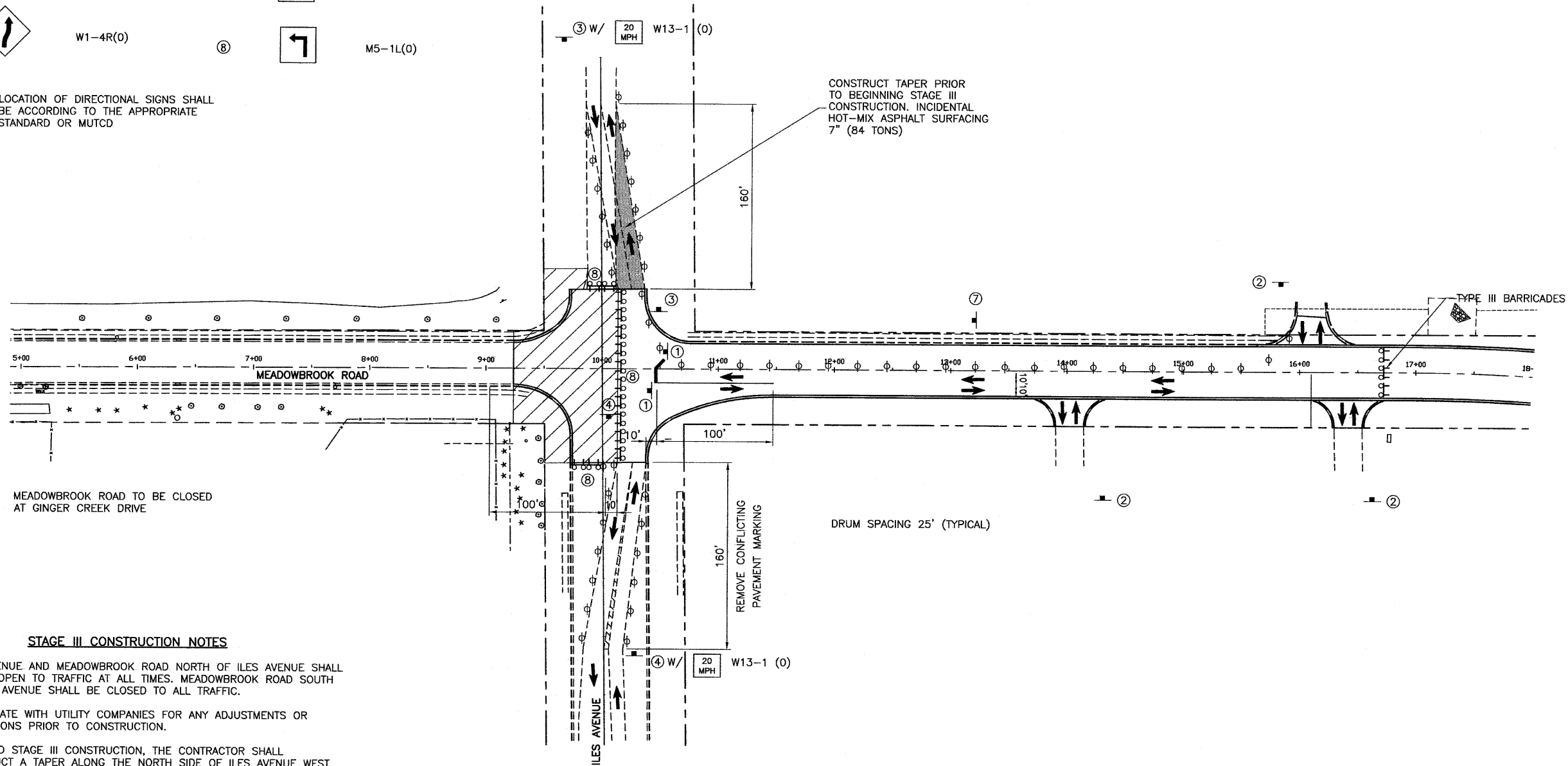
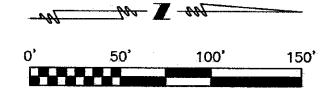


SIGNS

①		R1-1	⑤		W20-3(0)-48
②		W20-1103(0)	⑥		R11-2
③		W1-4L(0)	⑦		M5-1R(0)
④		W1-4R(0)	⑧		M5-1L(0)

NOTE: LOCATION OF DIRECTIONAL SIGNS SHALL BE ACCORDING TO THE APPROPRIATE STANDARD OR MUTCD



STAGE III CONSTRUCTION NOTES

1. ILES AVENUE AND MEADOWBROOK ROAD NORTH OF ILES AVENUE SHALL REMAIN OPEN TO TRAFFIC AT ALL TIMES. MEADOWBROOK ROAD SOUTH OF ILES AVENUE SHALL BE CLOSED TO ALL TRAFFIC.
2. COORDINATE WITH UTILITY COMPANIES FOR ANY ADJUSTMENTS OR RELOCATIONS PRIOR TO CONSTRUCTION.
3. PRIOR TO STAGE III CONSTRUCTION, THE CONTRACTOR SHALL CONSTRUCT A TAPER ALONG THE NORTH SIDE OF ILES AVENUE WEST OF MEADOWBROOK ROAD.
4. CONSTRUCT STORM SEWER, CURB AND GUTTER AND PAVEMENT FROM STA 9+23.64 TO THE NEW PAVEMENT AT STA 10+14.
5. THE PROPOSED PAVEMENT SHALL BE HOT-MIX ASPHALT PAVEMENT (FULL-DEPTH), 10" ON SUB-BASE GRANULAR MATERIAL, TYPE A 12".
6. ALL IMPROVEMENTS TO MEADOWBROOK ROAD AND ILES AVENUE DURING THIS STAGE SHALL BE COMPLETED USING THE APPROPRIATE TRAFFIC CONTROL AND PROTECTION STANDARDS.
7. INSTALL SHORT TERM PAVEMENT MARKING AND OPEN ALL LANES TO TRAFFIC.
8. CONSTRUCT TEMPORARY OR PERMANENT PAVEMENT MARKING.

LEGEND

- WORK ZONE
- DRUM OR BARRICADE WITH STEADY BURN LIGHT
- TYPE III BARRICADE WITH 2 FLASHING LIGHTS
- TRAFFIC FLOW
- TRAFFIC CONTROL SIGN (NUMBER INDICATES SIGN TYPE SHOWN ABOVE)

SHEET TITLE <b>STAGE III CONSTRUCTION AND TRAFFIC CONTROL PLAN</b>	
PROJECT FAU RTE. 8046(MEADOWBROOK ROAD) SECTION 09-00465-00-PV CITY OF SPRINGFIELD SANGAMON COUNTY	PROJECT NO. 09040 SCALE 1"=50' DATE 4/19/10 DESIGNED BY CHECKED BY DRAWING NO.
 <b>Coombe-Bloxdorf P.C.</b> -CIVIL ENGINEERS- -STRUCTURAL ENGINEERS- -LAND SURVEYORS- Phone: 217/544-8477 Design Firm License No. 184-002703 755 South Grand Ave. W, Springfield, IL 62704	
15 OF 30 SHTS	