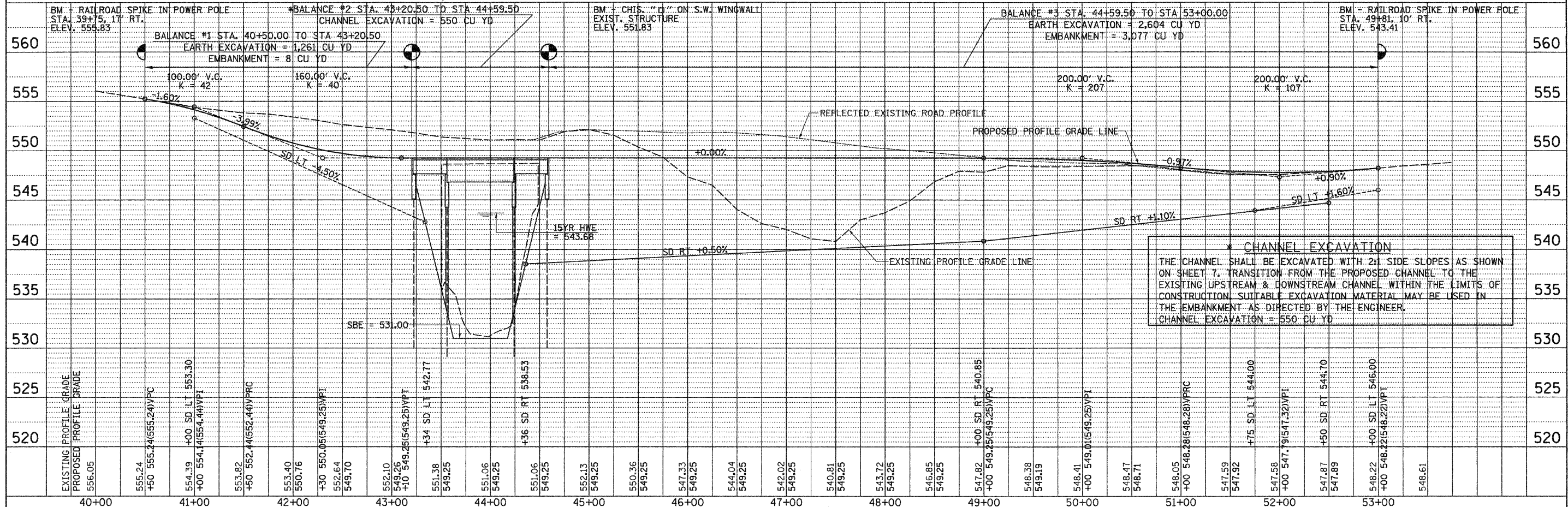


TR 359 CURVE #1 DATA		TR 359 CURVE #2 DATA	
PI STA. = 46+60.05	$\Delta = 62^\circ 31' 50''$ (LT)	PI STA. = 50+94.90	$\Delta = 76^\circ 09' 46''$ (RT)
D = 19° 05' 55"	R = 300.00'	D = 19° 05' 55"	R = 300.00'
T = 182.15'	L = 327.41'	T = 235.07'	L = 398.79'
E = 50.97'	P.C. STA. = 44+77.90	E = 81.13'	P.C. STA. = 48+59.83
	P.T. STA. = 48+05.31		P.T. STA. = 52+58.62
	REMOVE ADVERSE CROWN		REMOVE ADVERSE CROWN



FILE NAME = V:\Bridges\2800 - Pike\2800P001.dgn	USER NAME = othomas	DESIGNED -	REVISED -	<b>PIKE COUNTY TOWNSHIP ROAD 359 OVER HONEY CREEK</b>		PLAN AND PROFILE		RTE.	SECTION	COUNTY	TOTAL SHEETS	SHEET NO.
		DRAWN -	REVISED -			TR 359	09-1113-00-BR	PIKE	28	6		
		CHECKED -	REVISED -			CONTRACT NO. 93540						
		DATE -	REVISED -			FED. ROAD DIST. NO. 7 ILLINOIS						
PLOT SCALE = 50.0000" / IN.				SCALE: 1"=50'				SHEET NO. 1 OF 1 SHEETS		STA. 40+50.00 TO STA. 53+00.00		
PLOT DATE = 9/8/2010										FED. AID PROJECT BR05-01490141		

DATE	
BY	
DATE	
BY	
DATE	
BY	
DATE	
BY	
DATE	
BY	

DATE	
BY	
DATE	
BY	
DATE	
BY	
DATE	
BY	
DATE	
BY	

SURVEYED \_\_\_\_\_ CHECKED \_\_\_\_\_  
 PLAN \_\_\_\_\_ ALIGNED \_\_\_\_\_  
 NOTE BOOK \_\_\_\_\_  
 NO. \_\_\_\_\_  
 DATE \_\_\_\_\_  
 FILE NAME \_\_\_\_\_  
 USER NAME \_\_\_\_\_  
 DESIGNED \_\_\_\_\_  
 DRAWN \_\_\_\_\_  
 CHECKED \_\_\_\_\_  
 DATE \_\_\_\_\_  
 REVISED \_\_\_\_\_  
 REVISED \_\_\_\_\_  
 REVISED \_\_\_\_\_  
 REVISED \_\_\_\_\_  
 SCALE: 1"=50'  
 SHEET NO. 1 OF 1 SHEETS  
 STA. 40+50.00 TO STA. 53+00.00  
 FED. ROAD DIST. NO. 7 ILLINOIS  
 FED. AID PROJECT BR05-01490141