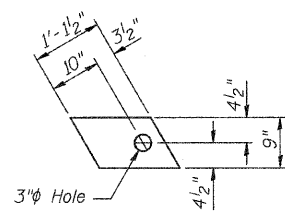
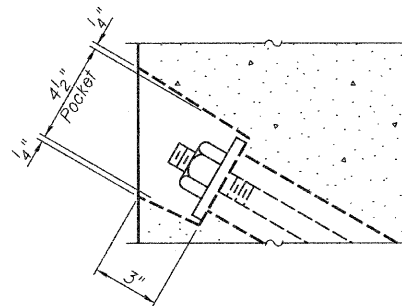


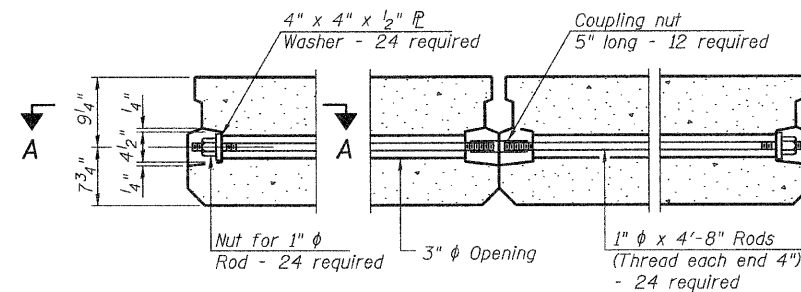
1/2" FABRIC BEARING PAD
(Interior) 24 Required



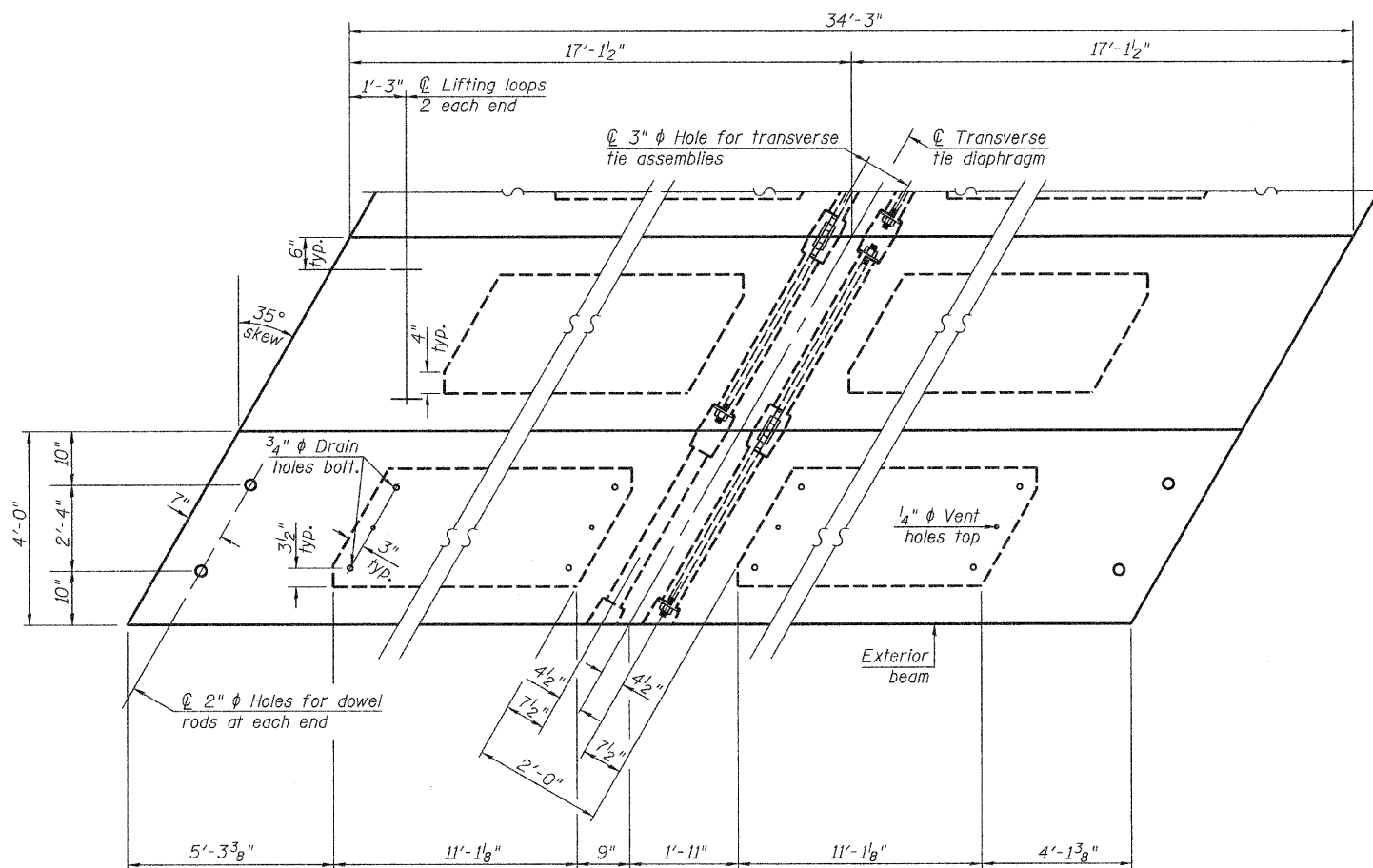
1/2" FABRIC BEARING PAD
(Exterior) 8 Required
FIXED



SECTION A-A



TYPICAL TRANSVERSE TIE ASSEMBLY

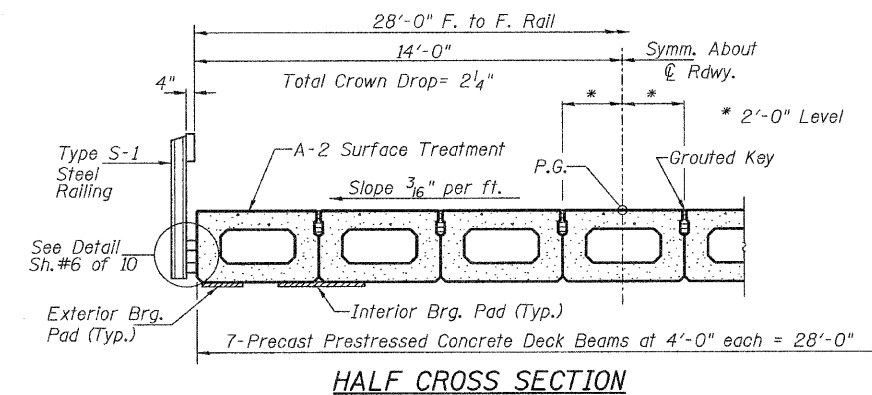


PLAN VIEW

Note: Connect beams in pairs with the transverse tie configuration shown.

NOTES

- Prestressing steel shall be uncoated high strength, low relaxation 7-wire strand, Grade 270. The nominal diameter shall be 1/2" and the nominal cross-sectional area shall be 0.153 sq. in. The 1" rods in the transverse tie assembly shall be tightened to a snug fit and the threads set. Pockets on exterior faces of bridge shall be filled with grout after transverse tie assembly is in place.
- Reinforcement bars shall conform to ASTM A 706, Grade 60.
- Two 1/8" fabric adjusting shims of the dimensions of the exterior bearing pad shall be provided for each bearing pad location.
- A minimum 2 1/2" diameter lifting pin shall be used to engage the lifting loops during handling.
- Corrosion Inhibitor, per Article 1020.05(b)(12) and 1021.06 of the Standard Specifications, shall be used in the concrete for precast prestressed concrete deck beams.
- Compressive strength of prestressed concrete, f'c, shall be 6000 psi.
- Compressive strength of prestressed concrete at release, f'ci, shall be 5000 psi.



HALF CROSS SECTION

BILL OF MATERIAL

| ITEM | UNIT | QUANTITY |
|---|-------|----------|
| ① Precast Prestressed Concrete Deck Beams (17" Depth) | SQ FT | 1,918 |

① See Special Provisions

SUPERSTRUCTURE - SPANS 1 & 3
PIKE COUNTY
SECTION 09-1113-00-BR
T.R. 359 OVER HONEY CREEK

| SHEET NO. 2 | ROUTE NO. | SECTION | COUNTY | TOTAL SHEETS | SHEET NO. |
|--------------------------------|-----------|---------------|-------------------------------|--------------|-----------|
| 10 SHEETS | TR 359 | 09-1113-00-BR | PIKE | 28 | 8 |
| S.N. 075-3318 | | | CONTRACT NO. 93540 | | |
| FED. ROAD DIST. NO. 7 ILLINOIS | | | FED. AID PROJECT BROS-0149041 | | |