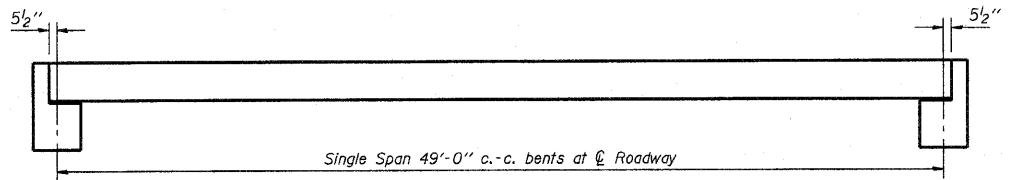
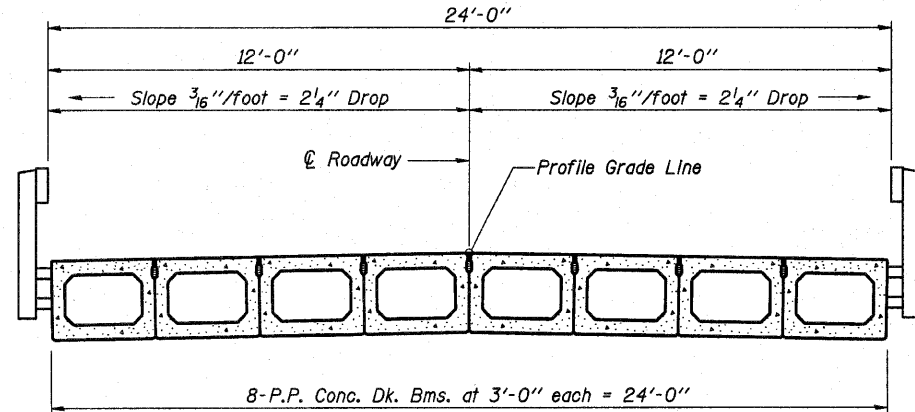


ROUTE NO.	SECTION	COUNTY	TOTAL SHEETS	SHEET NO.
TR 15	07-171B-00-BR	MARION	4	5
FED. ROAD DIST. NO.	ILLINOIS	PROJECT		

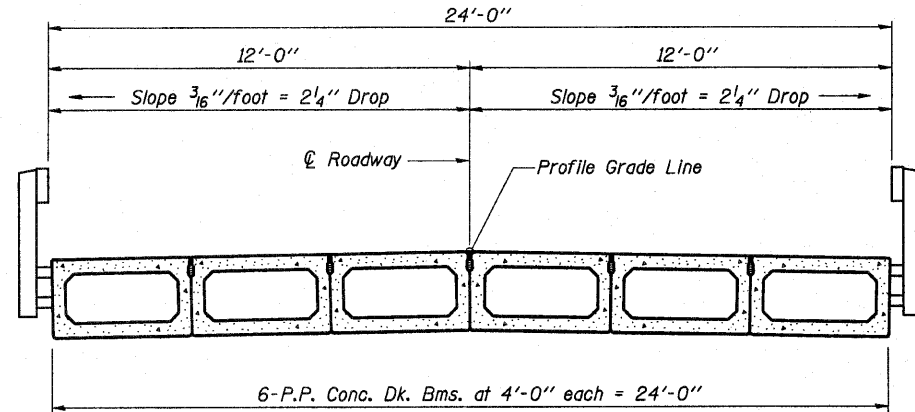
CONTRACT NO. 97452



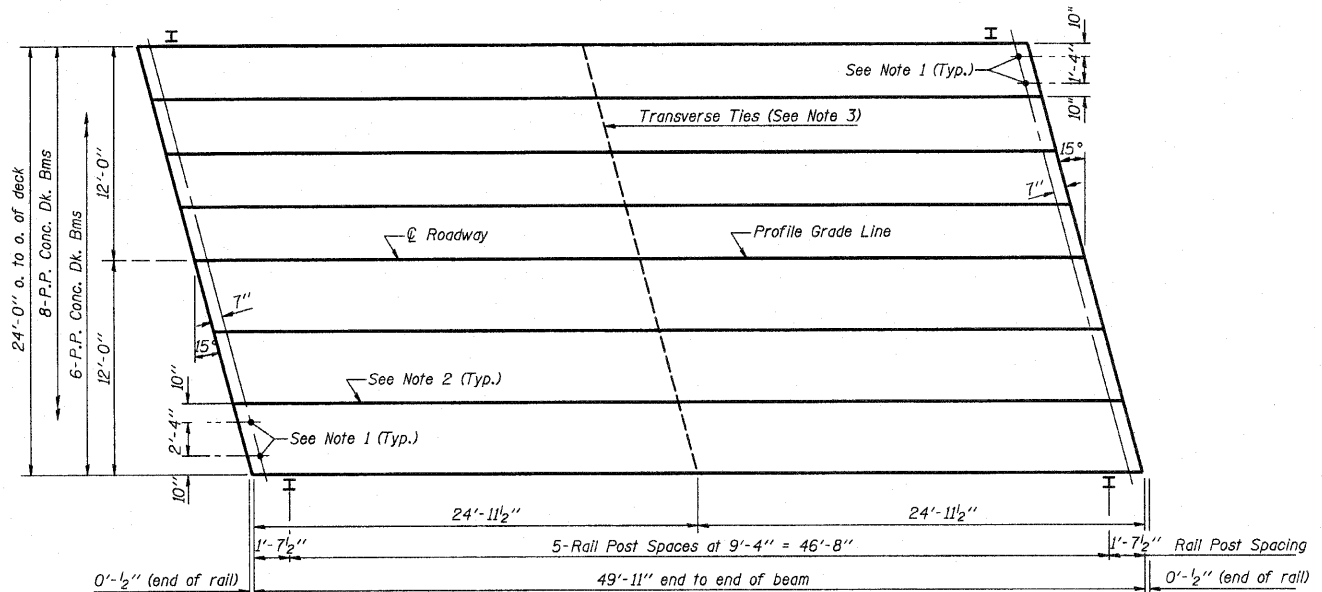
TYPICAL ELEVATION



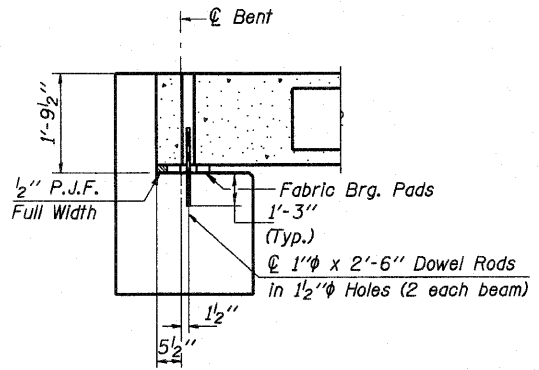
CROSS SECTION



CROSS SECTION



PLAN



SECTION AT ABUTS.
(Along ϕ Beams)

**BILL OF MATERIAL
QUANTITIES FOR ONE SPAN**

P.P. Conc. Dk. Bm. 21" Dp.	1200 Sq. Ft.
Steel Railing	100 Ft.

NOTES

1. After beams have been erected, holes shall be drilled into substructure and anchor dowels placed. Dowel holes shall be filled with non-shrink grout to top of beam and allowed to cure min. 24 hrs. prior to grouting the shear keys.
2. Longitudinal keys shall be grouted.
3. The 1" ϕ rods in the transverse tie assembly shall be tightened to a snug fit and the threads set. Pockets that receive transverse tie bar outside shall be filled with grout after transverse tie assembly is in place. See shfs. 7 and 9 for additional information.

RHUTASEL and ASSOCIATES, INC.
CONSULTING ENGINEERS & LAND SURVEYORS
CENTRALIA, ILLINOIS FREEBURG, ILLINOIS

PREPARED FOR:
ASCOM
200705604

Date: 10/28/2010
Design: MRQ
Drawn: BLT
Job No.: 50910

**P.P.C. DECK BEAM
SUPERSTRUCTURE**

**24' ROADWAY
21" BEAMS
49' SPAN - 15° SKEW**