

ROAD CLASSIFICATION: MAJOR COLLECTOR
 DESIGN SPEED: 50 M.P.H.

ADT:
 (2009) = 1100
 (2029) = 1400
 PC = 1323
 SU = 64
 MU = 13
 DHV₂₀ = 140

JOINT UTILITY LOCATING INFORMATION
 FOR EXCAVATIONS (J.U.L.I.E.)
 PHONE 1-800-892-0123

STATE OF ILLINOIS
 DEPARTMENT OF TRANSPORTATION

DIVISION OF HIGHWAYS
 PLANS FOR PROPOSED ROADWAY IMPROVEMENTS

FEDERAL-AID S.T.R. PROJECT

F.A.S. 1878 (CH 5)

Franklin County, Illinois

Section 08-00172-00-RS

Project RS-1878(109)

JOB C-99-528-09

RTE.	SECTION	COUNTY	TOTAL SHEETS	SHEET NO
FAS 1878	08-00172-00-RS	FRANKLIN	5	1

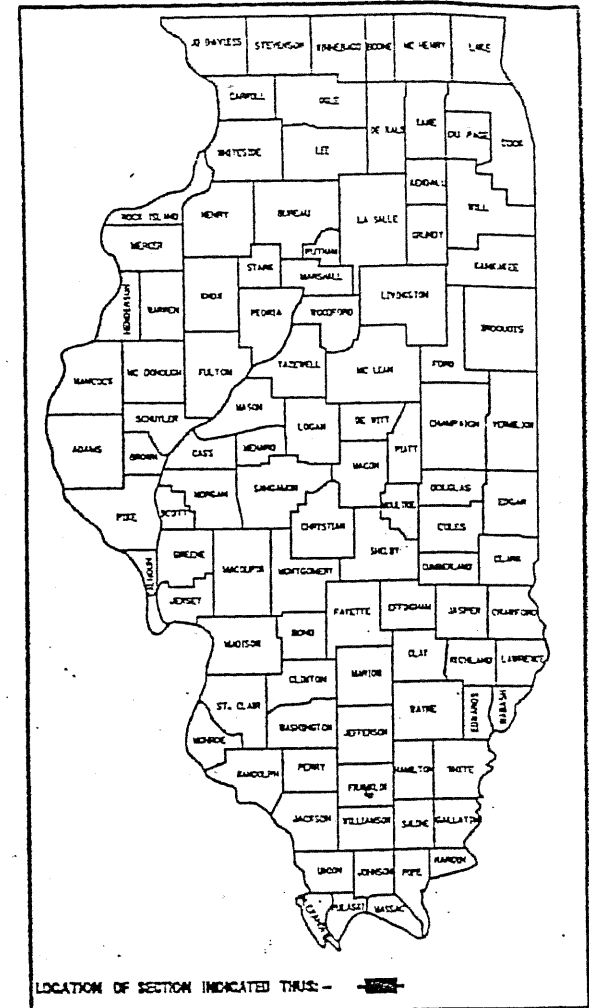
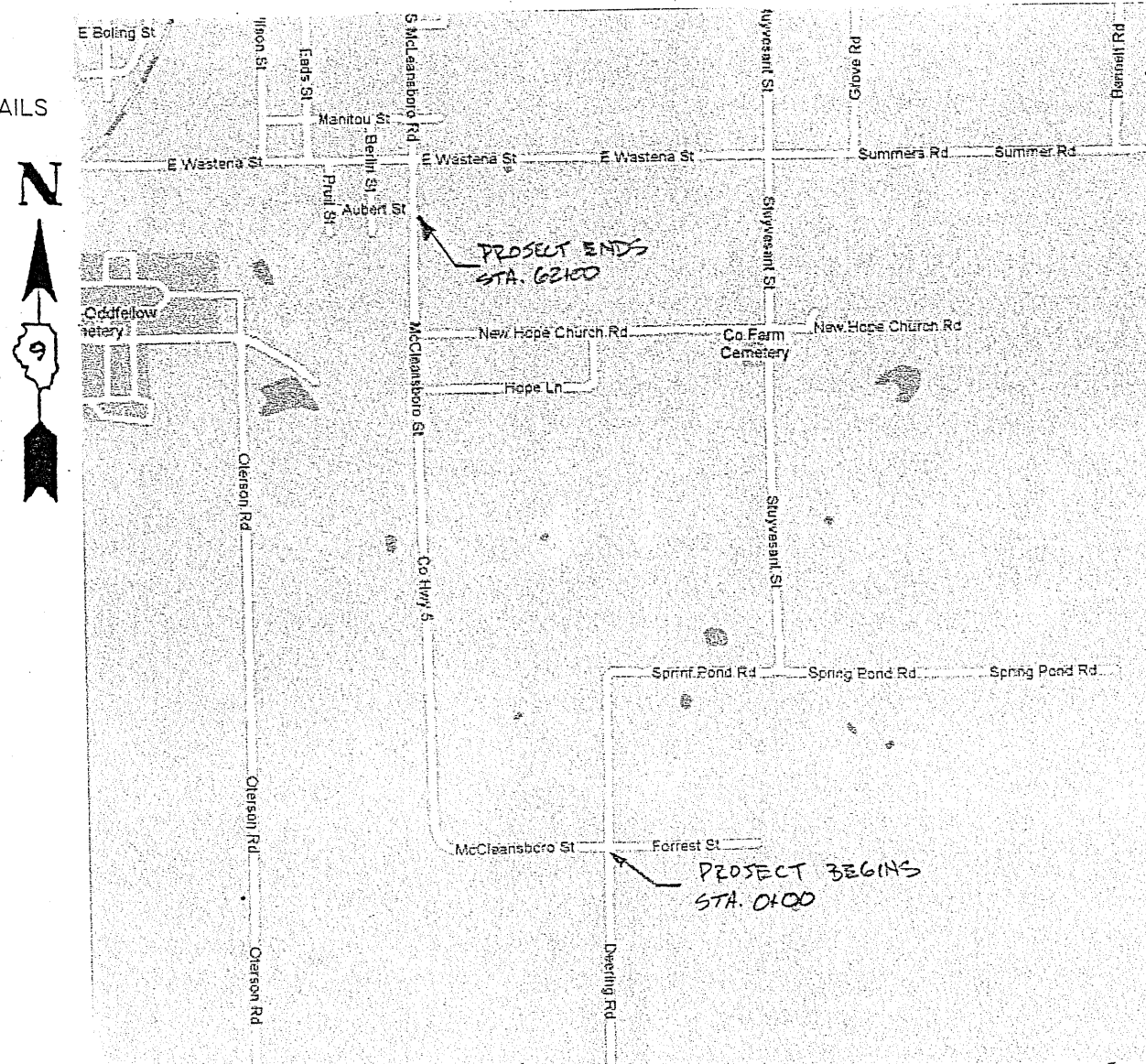
SHEET NO.	TITLE
1	COVER SHEET AND SUMMARY OF QUANTITIES
2	MISCELLANEOUS DETAILS
3	TYPICAL SECTIONS AND MISCELLANEOUS DETAILS
4-5	PLAN

STANDARDS

- 701006-03
- 701201-04
- 701301-04
- 701306-03
- 701311-03
- 701901-01
- 780001-02
- BLR 24-2

SUMMARY OF QUANTITIES			
CODE NO.	PAY ITEM	UNIT	TOTAL
40200800	AGGREGATE SURFACE COURSE, TYPE B	TON	20
40600100	BITUMINOUS MATERIALS (PRIME COAT)	GALLON	137
40600982	HOT-MIX ASPHALT SURFACE REMOVAL	SQ YD	177.6
	-BUTT JOINT		
40603085	HOT-MIX ASPHALT BINDER COURSE, IL 19.0, N70	TON	1,710
40603315	HOT-MIX ASPHALT SURFACE COURSE, MIX "C", N70	TON	1,430
48100100	AGGREGATE SHOULDERS, TYPE A	TON	1,560
67100100	MOBILIZATION	L SUM	1
70300100	SHORT-TERM PAVEMENT MARKING	FOOT	620
Δ78001110	PAINT PAVEMENT MARKING - LINE 4"	FOOT	19,877

Δ SPECIALTY ITEM



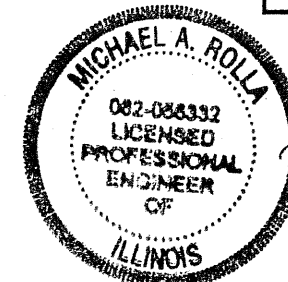
LOCATION OF SECTION INDICATED THUS: -

STATE OF ILLINOIS
 DEPARTMENT OF TRANSPORTATION

APPROVED 8-13-2010
Phillip A. Rame
 FRANKLIN COUNTY HIGHWAY ENGINEER

PASSED 8/31/10
Devi W. Hallett
 DISTRICT 9 ENGINEER OF LOCAL ROADS & STREETS

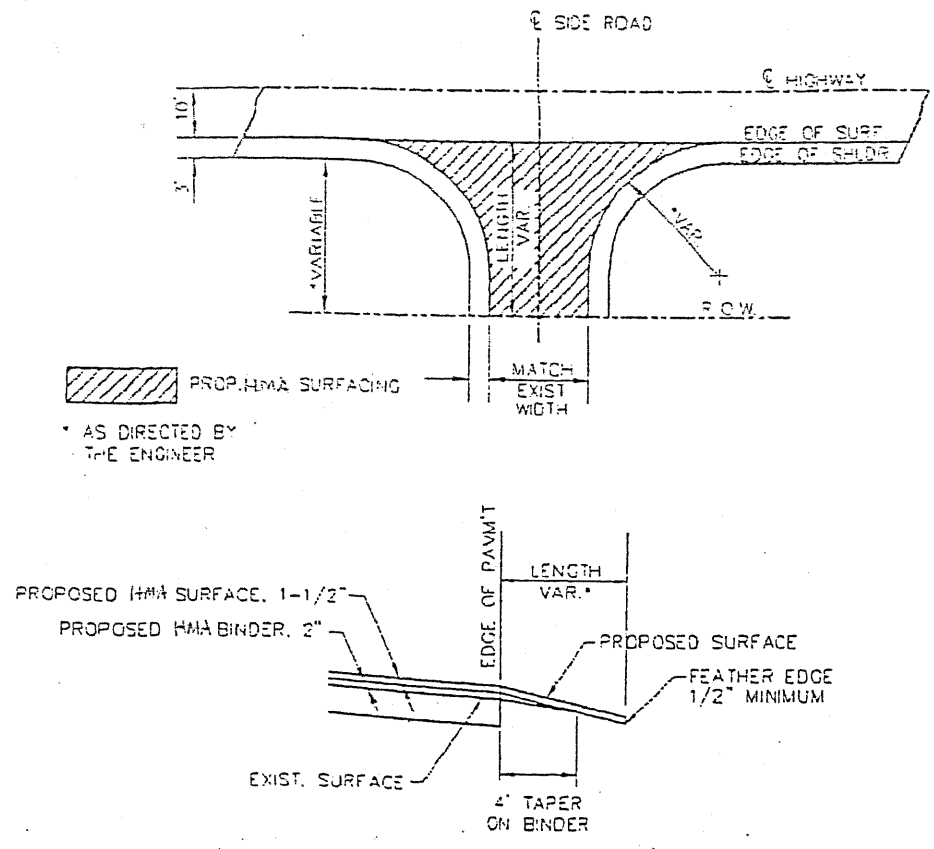
RELEASING FOR BID
 BASED ON LIMITED
 REVIEW 8-31-2010
Mary C. Lamm
 DEPUTY DIRECTOR OF HIGHWAYS, REGION 5 ENGINEER



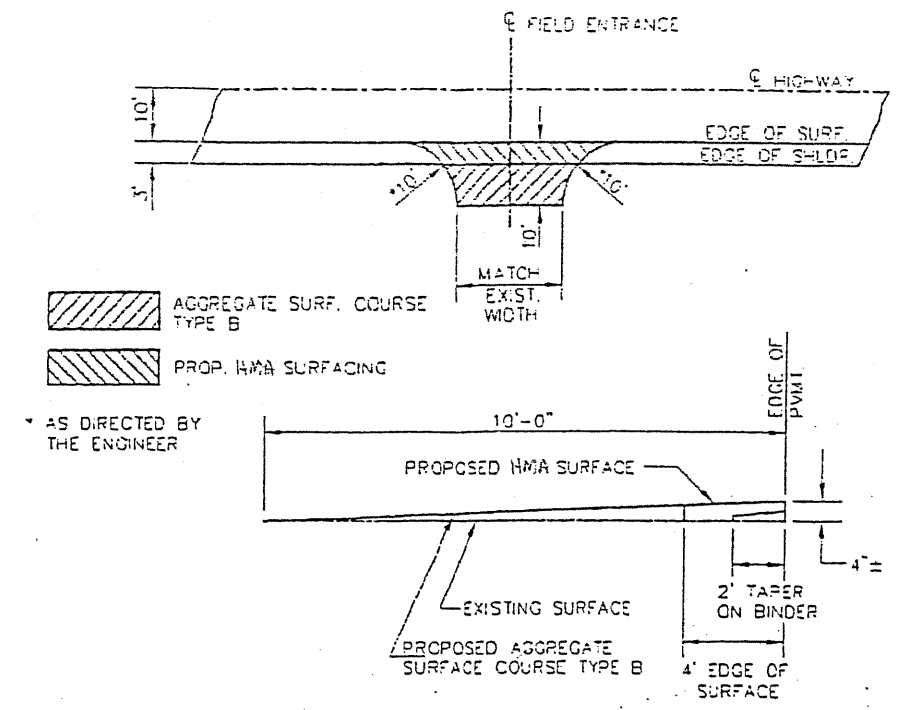
Phillip A. Rame
 MICHAEL A. ROLLA
 ILLINOIS REGISTERED PROFESSIONAL ENGINEER
 #062-056332
 LIC. EXPIRES NOVEMBER 30, 2011

CONTRACT NO. 99433

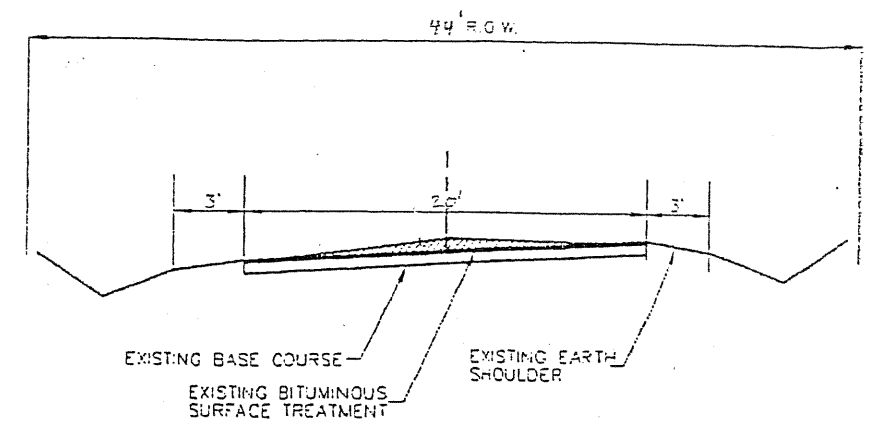
NET LENGTH OF IMPROVEMENT = 1.174 MILES (6,200 FEET)



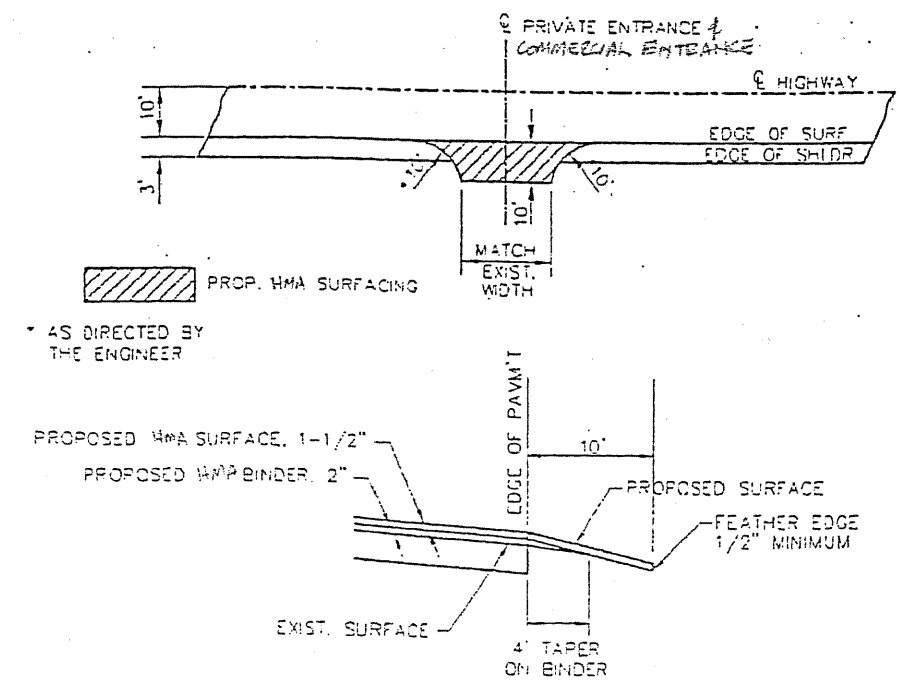
SIDEROAD DETAILS



FIELD ENTRANCE DETAILS



TYPICAL EXISTING SUPERELEVATED SECTION



PRIVATE ENTRANCE DETAILS
COMMERCIAL ENTRANCE DETAILS

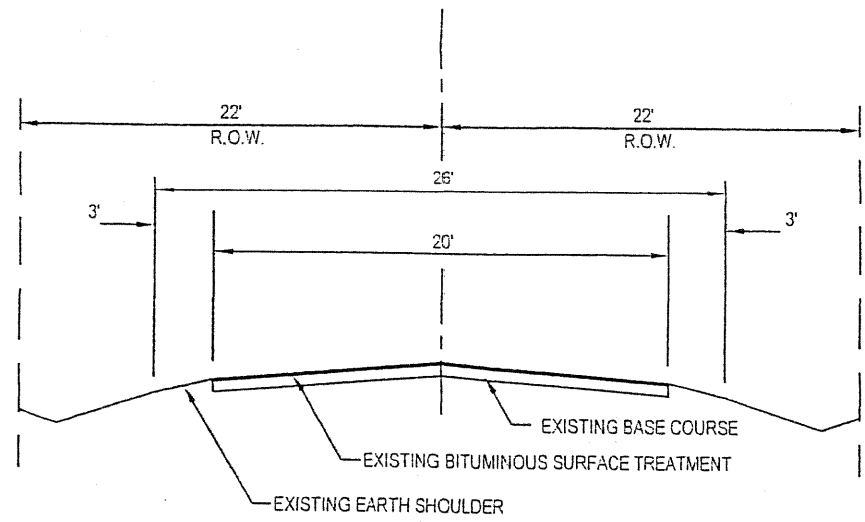
ENTRANCES	AGGREGATE SURFACE COURSE TYPE B, TON	HOT MIX ASPHALT SURFACE COURSE, MIX "C", N70, TON
ONE (1) ENTRANCE	2	2
TOTAL = 10 ENTRANCES	20	20

TURNOUT	BITUMINOUS MATERIALS (PRIME COAT) GALLON	HOT MIX ASPHALT SURFACE COURSE, MIX "C", N70, TON
ONE (1) TURNOUT	3	4
TOTAL = 5 TURNOUTS	15	20

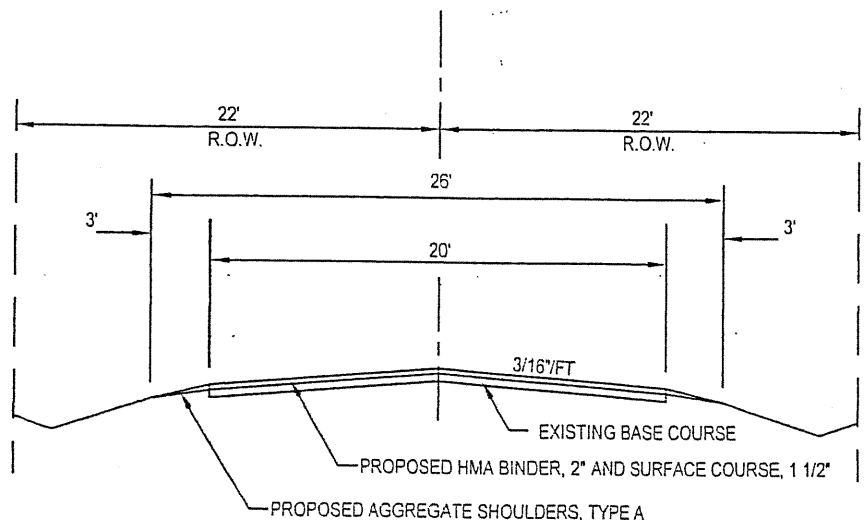
ENTRANCES	BITUMINOUS MATERIALS (PRIME COAT) GALLON	HOT MIX ASPHALT SURFACE COURSE, MIX "C", N70, TON
ONE COMMERCIAL ENTRANCE	20	6
ONE (1) ENTRANCE	8.5	3
TOTAL = 12 PRIVATE ENTRANCES	102	36

LOCATION	HOT MIX ASPHALT SURFACE COURSE, MIX "C", N70, TON
RT. STA. 0+75	43
RT. STA. 48+95	6
RT. STA. 53+38	7
TOTAL = 3 ENTRANCES	56

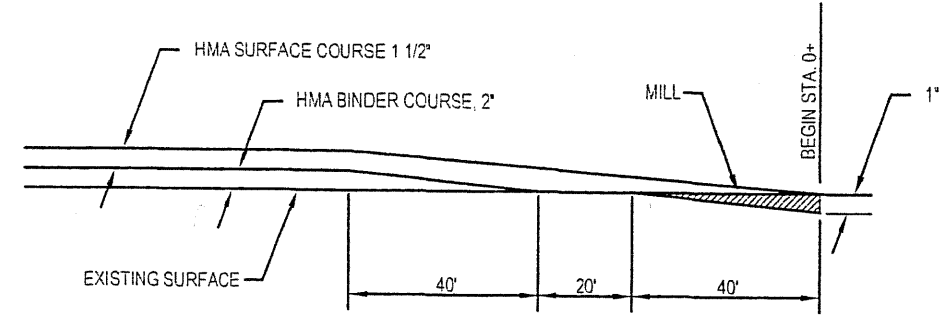
MISCELLANEOUS DETAILS



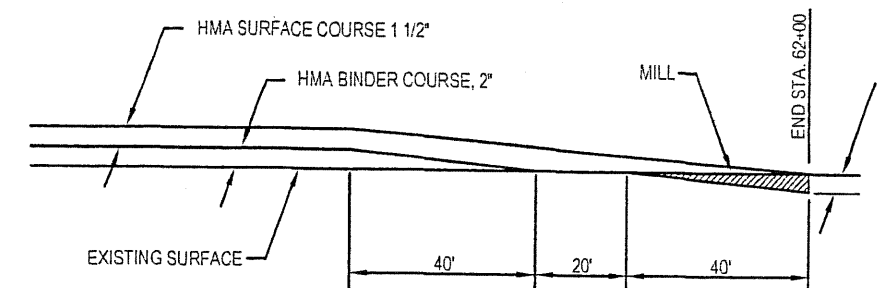
TYPICAL EXISTING SECTION



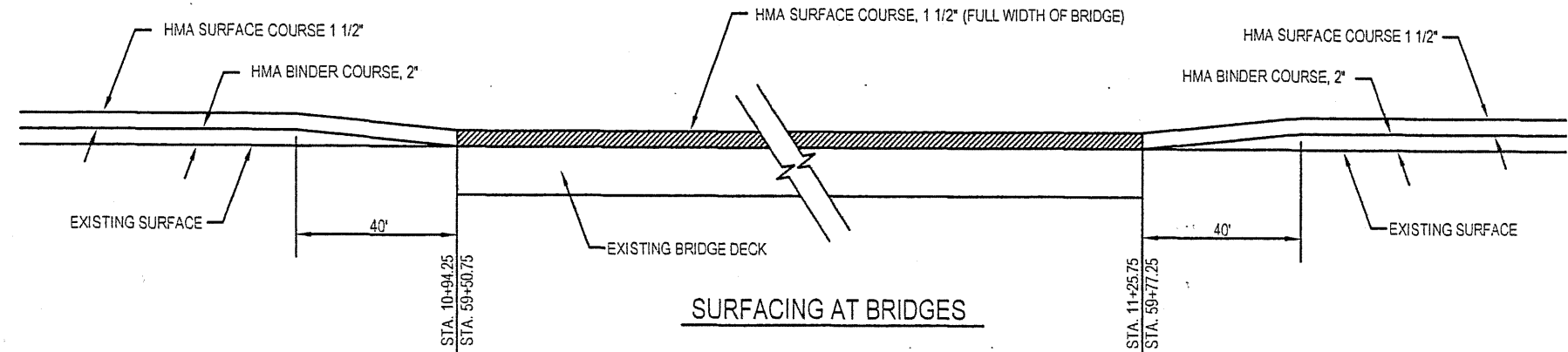
TYPICAL PROPOSED SECTION



BEGINNING BUTT JOINT



ENDING BUTT JOINT



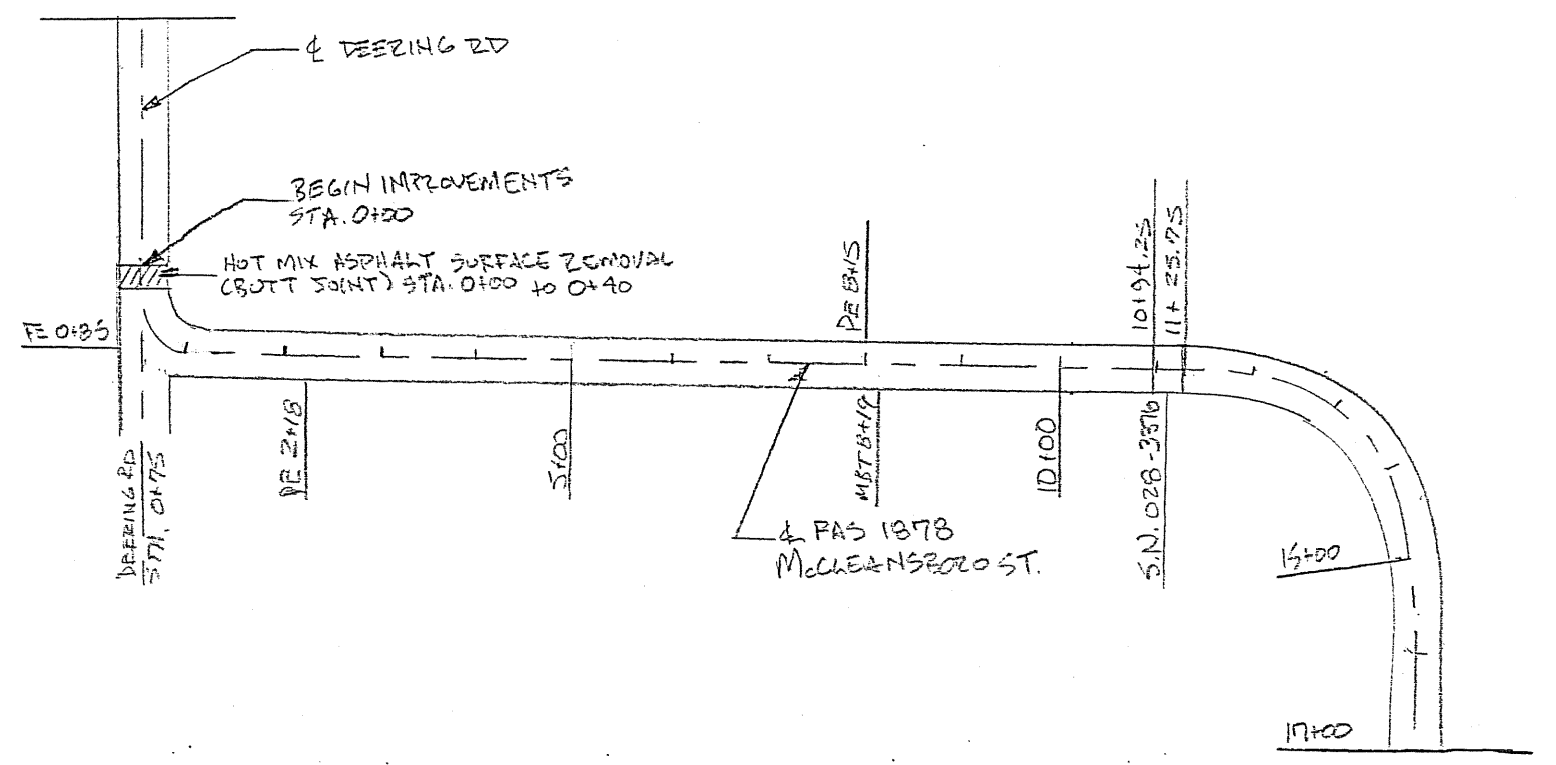
SURFACING AT BRIDGES

SCHEDULE OF PAVEMENT MARKING LINE, 4"

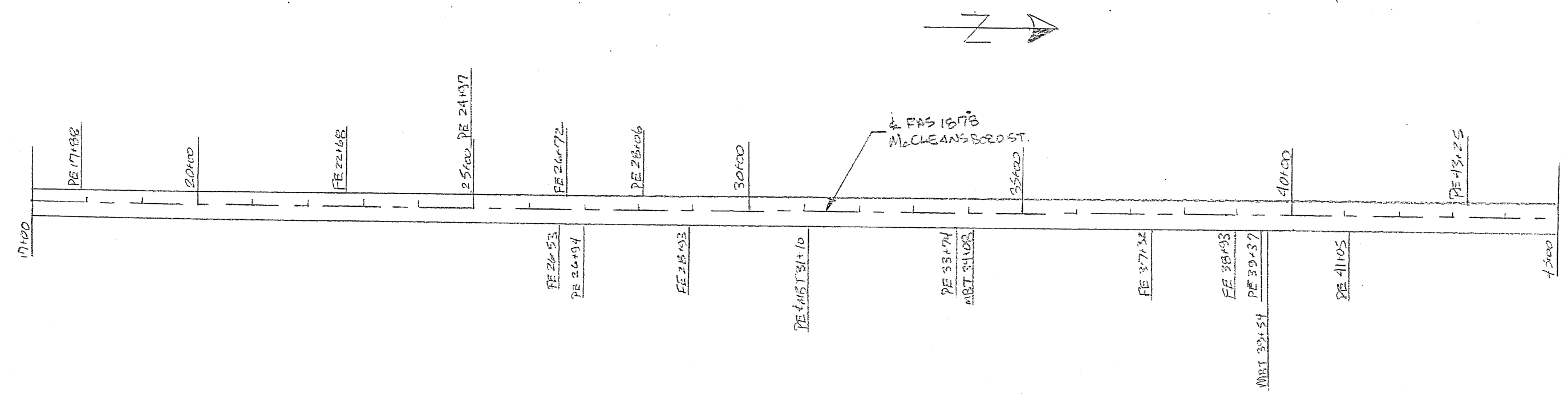
NORTHBOUND LANE			SOUTHBOUND LANE				
STATION	NO PASSING (YELLOW SOLID)	CENTERLINE (YELLOW DASHED)	STATION	NO PASSING (YELLOW SOLID)	CENTERLINE (YELLOW DASHED)	STATION	EDGE LINE (WHITE SOLID)
0+00 to 1+32	132		0+00 to 10+90	1090		0+00 to 62+00	12,237
1+32 to 4+64		83	10+90 to 17+63		163.35		
4+64 to 14+12	948		17+63 to 23+15	552			
14+12 to 28+00		239.25	23+15 to 35+30		182.5		
28+00 to 34+30	630		35+30 to 42+00	670			
34+30 to 36+30		25	42+00 to 45+60		90		
36+30 to 54+00	1770		45+60 to 54+00	840			
54+00 to 62+00		200					
TOTALS	3480	567.39	TOTALS	3152	440.75	TOTALS	12,237

TYPICAL SECTIONS & MISCELLANEOUS DETAILS

ROUTE	SECTION	COUNTY	TOTAL SHEETS	SHEET NO.
FAS 1878	02-00172-00-RS	FRANKLIN	5	4
CONTRACT No.:				

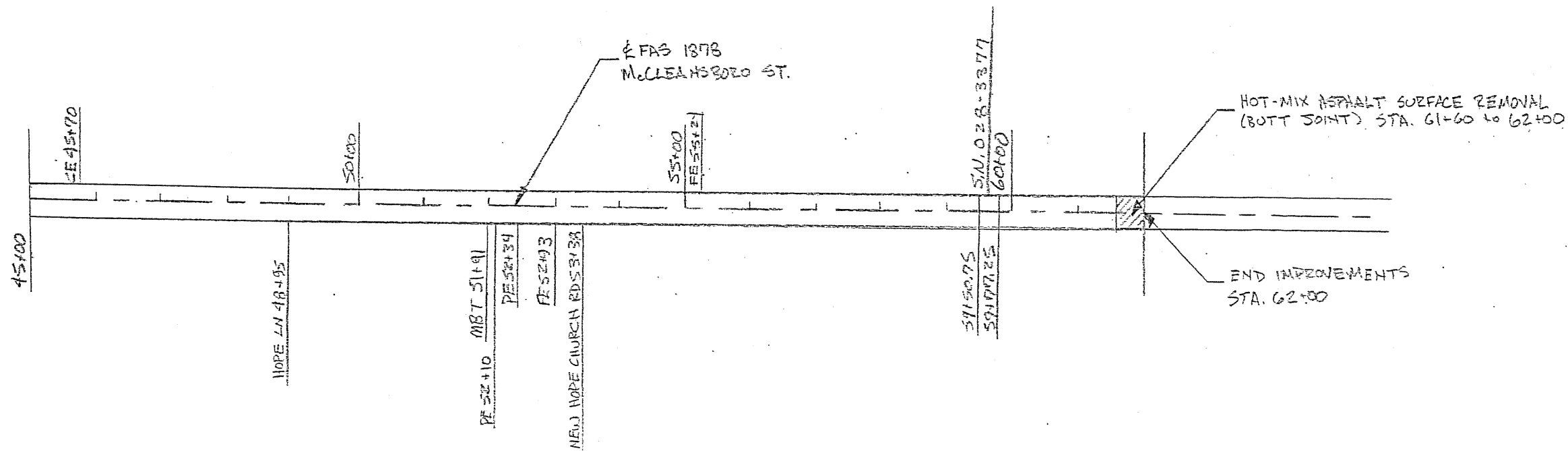
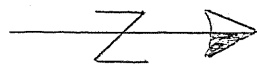


SCALE: 1" = 200'



PLAN
STATION 0+00 TO 45+00

ROUTE	SECTION	COUNTY	TOTAL SHEETS	SHEET NO.
FAS 1878	08-00172-00-RS	FRANKLIN	5	5
CONTRACT No.:				



SCALE: 1" = 200'

PLAN
STATION 43+00 TO 62+00